



**Products for Medical Centres,  
Dental Clinics, Pharmacies  
and Veterinary Clinics**



Adelab Scientific was formed in 1986 by Keith Plomer to establish a local scientific company to supply his many existing customers with high quality laboratory products and services at competitive prices.

Today, 32 years on, Adelab Scientific employs seven people specialising in many fields including Chemical Analysis, Chromatography Supplies, Molecular Biology, Winery Laboratory products and General Laboratory products.

We supply and support a large variety of products from local, interstate and overseas suppliers.

With a combined scientific knowledge of our staff you can be sure that your requirements will be understood and looked after for your laboratory and application needs.

**Simon Plomer**  
Manager

**Office 08 8234 7955**  
**Mob. 0407 676 370**

**Keith Plomer**  
Administration and Sales Support

**Office 08 8234 7955**  
**Mob. 0414 558 368**

**Angelo Karakousis**  
Customer Service

**Office 08 8234 7955**

**Melissa Clutterbuck**  
Technical Sales

**Office 08 8234 7955**  
**Mob. 0413 947 086**

**Vanessa Plomer**  
Dental and Medical Sales

**Office 08 8234 7955**  
**Mob. 0424 155 409**

**Maggie Kazmi**  
Sales Support

**Office 08 8234 7955**

**Natalie Goldsworthy**  
Reception and Accounts

**Office 08 8234 7955**

**Frank Portolesi**  
Goods Receipt & Despatch

**Office 08 8234 7955**

## INDEX

Personal safety products	4
Centrifuges	5
Balances	6
Pipettes	7
Electrochemistry instruments	8
Ultrasonic cleaners	9
Fume cabinets	10
Equipment Packages	11
Magnifiers	12
Safety storage cabinets	13
Sundry instruments	14
Gadgets	15

## PERSONAL PROTECTION



**Bastion is committed to providing the ultimate solutions in personal barrier protection and hygiene.**

**Products include -**

**Gloves - latex, nitrile, vinyl, polyethylene, rubber**



**Surgical face masks -**



**Dust masks -**



**Respirators -**



**Head wear -**



**Lab coats - isolation gowns, coveralls, sleeve covers, etc**

**Shoe and boot covers -**

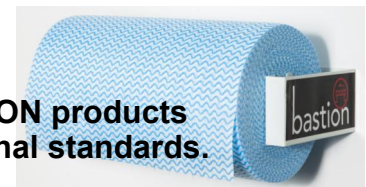


**Aprons, ponchos**



**Wipes - rolls, packs, regular, heavy duty**

**Safety glasses -**



**For your safety and peace of mind, all BASTION products are made to conform to the relevant international standards.**

**Technical data sheets are available on each individual product.  
A5 size sample packs are also available.**

*and the pricing will be to your liking ...*

## CENTRIFUGES



Model 223e



Compact and economical bench centrifuges



4-place swing-out rotor  
for 50mL Falcon tubes



10-place fixed-angle rotor  
for 50mL Falcon tubes

# SpinFuge

Personal Microcentrifuge  
– with interchangeable rotors.



### Features:

- Interchangeable Rotors
- Ergonomic Design
- Non Slip Base
- Transparent Cover



*3 x Interchangeable Rotors Included*

**BALANCES / SCALES****Portable Balances****Navigator® NVT**

**The only Scale in its Class with Touchless Sensors that free up your hands!**

- The Navigator Series is designed with a superior mechanical overload protection stem that allows the scale to withstand loads up to 400% of its rated capacity.
- The Navigator Series is designed to accurately stabilise in less than one second to provide fast and accurate weighing results, improving operator efficiency, productivity and throughput.
- The Navigator Series is designed with two touchless sensors that will free up your hands so you can focus on handling samples.

**Application**

Weighing, percent weighing, parts counting, check weighing, display hold, accumulate/totalise

**Display**

LED 20mm Display

**Communication**

Optional RS232 or USB or ethernet interface kits with integrated cables

**Construction**

ABS housing, stainless steel pan

**Operation**

AC adapter (included) or internal rechargeable battery (optional) or 4 'C' batteries (not included)

**Design Features**

Up front illuminated level indicator, removable stainless steel weighing platform, menu lockswitch, integral security bracket, integral shipping lock, stability indicator, overload and underload indicators, low battery indicator, auto shut-off.

Model	Capacity	Readability	Pan Size	Item No.	Price (excl. GST)
NVT1601/2	1600 g	0.1 g	174 mm x 230 mm	83032012	\$370.00
NVT3201/2	3200 g	0.2 g	174 mm x 230 mm	83032016	\$370.00
NVT6401/2	6400 g	0.5 g	174 mm x 230 mm	83032020	\$370.00
NVT10001/2	10000 g	0.5 g	174 mm x 230 mm	83032024	\$400.00
NVT16000/2	16000 g	1 g	174 mm x 230 mm	83032028	\$400.00



**PIPETTES - Single channel**

**RAININ PIPETTES**  
Performance you can feel  
Results you can trust

### Pipet-Lite™ with Magnetic Assist Research Assistant

#### Standard equipment

- Magnetic Assist helps locate and hold zero position
- Reduced differential between aspiration and blowout spring forces makes both springs significantly lighter
- Ergonomic handle design, comfortable fingerhook
- Lockable volume adjustment cannot be changed accidentally
- Built-in tip ejector shock absorber reduces thumb impact
- Quick-release tip ejector
- Universal shaft for use with universal tips



Pipet-Lite  
Volume range  
0.1µL–10mL

#### Specifications

Model	Volume µL	Increment µL	Accuracy % µL (±)	Precision % µL (±)
SL-2	0.2	0.002	12.0 0.024	6.0 0.012
	1		2.7 0.027	1.3 0.013
	2		1.5 0.030	0.7 0.014
SL-10	1.0	0.02	2.5 0.025	1.2 0.012
	5.0		1.5 0.075	0.6 0.03
	10.0		1.0 0.1	0.4 0.04
SL-20	2	0.02	7.5 0.15	2.0 0.04
	10		1.5 0.15	0.5 0.05
	20		1.0 0.2	0.3 0.06
SL-100	10	0.1	3.5 0.35	1.0 0.1
	50		0.8 0.4	0.24 0.12
	100		0.8 0.8	0.15 0.15
SL-200	20	0.2	2.5 0.5	1.0 0.2
	100		0.8 0.8	0.25 0.25
	200		0.8 1.6	0.15 0.3
SL-300	30	0.2	2.5 0.75	1.0 0.3
	150		0.8 1.2	0.25 0.375
	300		0.8 2.4	0.15 0.45
SL-1000	100	1	3.0 3.0	0.6 0.6
	500		0.8 4.0	0.2 1.0
	1000		0.6 8.0	0.15 1.5
SL-5000	500	5	2.4 12.0	0.6 3.0
	2500		0.6 15.0	0.2 5.0
	5000		0.6 30.0	0.16 8.0
SL-10ML	1ml	10	5 50.0	0.6 6.0
	5 ml		1 50.0	0.2 10.0
	10 ml		0.6 60.0	0.16 16.0

RAININ, Pipet-Lite, Magnetic Assist, and Pipetting 360° are trademarks of Rainin Instrument, LLC.

#### Ordering Information

Cat. No.	MT Order-No	Volume Range
SL-2	30042903	0.1–2 µL
SL-10	30042904	0.5–10 µL
SL-20	30042905	2–20 µL
SL-100	30042906	10–100 µL
SL-200	30042907	20–200 µL
SL-300	30042908	20–300 µL
SL-1000	30042909	100–1000 µL
SL-5000	30042910	500–5000 µL
SL-10ML	30042911	1000 µL–10 mL



**ONLY \$150.00 EX-GST**

## INSTRUMENTS FOR ELECTROCHEMISTRY

**EUTECH**  
INSTRUMENTS

**Eutech Instruments** is a leading ISO9001-certified company established in 1990 who is dedicated to the design and manufacture of sensor-based instruments for water quality analysis. Eutech products range from compact pocket testers and portable meters to research-grade benchtop meters. This is a selection of the most popular models.

### Model pH700 Bench Meter pH / mV-Redox-ORP / Temperature

Economical, user-friendly and accurate, the Eutech pH 700 is your ideal choice for routine applications in laboratories, production plants and schools.

#### FEATURES:

- Simple operation
- Dual measurement incl temperature with all readings
- 100 point memory
- Detachable electrode holder as standard
- Compact footprint saves space
- Customs set-up options
- Hold function and stability indicator
- 3-year warranty



### Model pH5+ Economy Hand-held Meter pH, ORP and temperature

#### FEATURES:

- Easy to use
- Self diagnostic
- Convenient push button calibration
- IP54 rating
- Energy saving & low maintenance
- Compact and lightweight



### EUTECH EcoTestr Waterproof Pocket meters for pH, EC, TDS and Salt testing

#### FEATURES:

- User friendly
- Large easy-to-read LCD
- Auto calibration
- Automatic temperature compensation
- All push-button operation
- Buoyant IP67 waterproof housing





## ULTRASONIC CLEANERS



Soniclean digital bench top ultrasonic cleaners are the quietest and most effective ultrasonic cleaner in the market place. The pulsed broadband ultrasonic frequencies achieve optimum cleaning results using adaptive pulse swept power. The Soniclean machines offer a complete range of programmable features via the intelligent key pad and provides real-time data on the digital display.



Model	Bath Size LxWxD (mm)	Capacity (litres)	Footprint LxWxD (mm)	Pulse Swept Power (watts)	Heating watts (peak)	Net Weight Kg (approx)
80TD	235 x 138 x 65	1.6	279 x 219 x 170	60	-	2.7
120TD	153 x 138 x 100	2.0	180 x 219 x 179	60	-	2.4
160TD, 160HD	235 x 138 x 100	3.0	279 x 219 x 170	70	100	3.0
250TD, 250HD	295 x 150 x 150	6.0	338 x 234 x 232	120	200	4.0
500TD, 500HD	298 x 238 x 150	10.0	338 x 323 x 237	130	200	4.6

Larger sizes are available if required

### FEATURES

- Drain standard on all tanks
- Lid interlock enable/disable function
- Maximum efficiency independent of water levels
- User programmable touch control keypad
- Selectable power levels
- User cleaning real time digital display
- Safety alarms

### ACCESSORIES

- Wire basket
- Acrylic basket, tray, beaker holder
- Glass beakers
- Small parts basket holder
- Detergent

### OPTIONS

- Heater preset ambient to 70 degrees C
- 240 volt operation
- Lid hinged-support
- Built-in benchtop

SONICLEAN is a South Australian company

## FUME CABINETS



At the heart of the Air Science product line is the innovative Multiplex™ Filtration Technology, designed exclusively by Air Science to create a safe work environment over the widest range of applications in the industry.

### Features:

- high operator protection to fume and particle hazards
- Multiple choice of filters available
- easy to change filters
- improved clamping eliminates by-pass leakage
- low airflow alarm
- optional back up safety filter
- high capacity
- Fume break-through detector, air flow alarms, etc

## AIR SCIENCE DWS™ Downflow Workstations

are high efficiency ductless fume hoods designed to protect the user and the environment from hazardous vapours generated on the work surface. Unrestricted front and side access facilitates applications requiring complex and intensive operator involvement, while downward airflow in the chamber protects the operator.

The DWS Downflow Workstation product line is based on an innovative Air Science Multiplex™ Filtration Technology that creates a safe work environment over the widest range of applications in the industry.



## BCLES-Cleair LOCAL EXTRACTION SYSTEM



Fumes and aerosols generated during various processes can be harmful when inhaled. It is crucial that operators and the surrounding environment are protected from these potentially harmful fumes and particulates. CleAir fume extraction arm systems provide efficient removal of these potential hazards by extracting and filtering the local work zones contaminated air cleanly back into the work place.



The adjustable fume extraction systems "Arm Hood" can be manipulated into a position suitable for most work applications. Various filter options are available to match each individual fume extractor application.

## STERILIZERS

### PRODUCTS SPECIFICALLY FOR DENTAL, NAIL OR TATTOO SUITES

These Labec Packages provides your business, whether a Dental Suite, Nail Salon or a Tattoo Studio, with a complete solution to answer your sanitation and sterilisation requirements.

The three key products for this package are -

**Labec USC-5L Ultrasonic Cleaner**, stainless steel inside and out, 5 litre capacity, 200 watts, heating to 80°C, 1-99 min. timer, digital displays

**Labec AA-17BS (for Dental suites or Tattoo studios) or AA-17S (for Nail salons) Bench Top Autoclaves** conforming to required standards, 17 litre capacity, pre-vacuum and outputs for data

**Labec WS1.0 Junior Water Distiller** with production of 1 litre per hour and 4 litre storage tank.



**Ultrasonic Cleaner • Autoclave • Water Distiller**

## MAGNIFIERS

## Maggy lamps

### Standard Maggy lamp – LED

This Australian made Maggy lamp has been the industry standard for bench magnifiers since 1947.

Now we have made it LED. Never have to change the fluorescent tube again.

- Robust desk model
- New LED design – only 9 watts
- 127mm Ø dia glass lens, 2x magnification
- No tube or starter replacement needed
- LED life 30,000 hours
- Instant on – no flicker



#ML 201-LED Standard Maggy lamp with LED

### Hand Held Maggy lamp with Integrated Wall Bracket



- Expandable curly cord that will stretch up to 2.5 metres
- Lamp is returned to wall bracket after use-eliminating trip hazard
- 127mm diameter lens, 2x magnification
- Glass lens-will not easily scratch and degrade due to chemical cleaners
- Heavy duty wall bracket mounts to plaster & masonry walls
- LED daylight tube which gives good skin tones

#ML 218-LED Hand Held Maggy lamp with wall bracket

### Maggyvue Opal Magnifier

The Maggyvue Magnifier is a quality German designed lamp. It is very popular with the medical, electronics and inspection industries where sharp definition is required.

- Quality German optics
- Circular lens, Ø 120mm, 2x magnification
- Optional clip on lens to increase magnification #ML151
- Spring balanced joints, easy to adjust
- Supplied with bench clamp and diffuser
- 22 watt daylight colour fluorescent tube
- Optional wall or floor mounted



#ML 150 Maggyvue Magnifier

### Mobile Floor Stand

- Pole bracket has pre drilled holes for easy mounting
- 950mm high, 50mm twin wheel castors
- Wear resistant powder coated surface



#ML 130 Mobile Floor Stand

### Sherlock Magnifiers

- Solid Handle and rim
- Clearview Acrylic Lens
- All Magnifiers 2x



#ML 930 Sherlock Magnifier, 5" (Ø130mm)

#ML 931 Sherlock Magnifier, 4.5" (Ø110mm)

#ML 932 Sherlock Magnifier, 4" (Ø101mm)

#ML 933 Sherlock Magnifier, 3.5" (Ø80mm)

#ML 934 Sherlock Magnifier, 3" (Ø76mm)

#ML 935 Sherlock Magnifier, 2.5" (Ø63mm)

#ML 936 Sherlock Magnifier, 2" (Ø50mm)

### Illuminated Magnifiers – budget range

- Battery powered light source
- Compact pocket size
- Require 2 x AA batteries



#ML 904 Ø45mm lens, 4x Illuminated Magnifiers

#ML 905 Ø35mm lens, 5x Illuminated Magnifiers

#ML 906 Ø25mm lens, 6x Illuminated Magnifiers



# SAFETY STORAGE CABINETS

## All conforming to Australian Standards



Class 3 Flammable Liquids



Class 5.1 Oxidising Agents



Class 8 Corrosive Substances  
POLY range for maximum  
chemical resistance



Cabinets are available in most popular sizes of 30L, 60L, 100L, 160L & 250L  
Other Storemasta® safety products include spill response kits, outdoor storage containers, decontamination equipment, shelving solutions plus much more.



Class 6 Toxic Substances



Class 8 Corrosive Substances  
Steel cabinets for rugged areas





## SUNDRY PRODUCTS

### Bottle-Top Dispenser

Safely and easily handle reagents

The Rainin Disp-X manual bottle top dispenser is a valuable tool to aliquot reagents quickly, reliably and safely. Built-in safety features protect the user from accidental spills and ensure smooth, trouble-free dispenser operation. For use with a wide range of compatible liquids – including corrosive and inflammable Liquids – Disp-X has a broad application base in biology, pharmaceutical, clinical, chemical and forensic labs. Disp-X can be used with a variety of liquid reagents while providing superior sealing over a wide range of temperatures and viscosities.

Disp-X is available in 4 different volume ranges: 0.5 – 5 ml, 1 – 10 ml, 2.5 – 25 ml and 5 – 50 ml.

These units fit onto standard 'Schott type' bottles of any size.



### Liquid Nitrogen Handling

Safely and easily handle LN<sub>2</sub> in clinics



Controlled LN<sub>2</sub> Dispensing



LN<sub>2</sub> Dewars



### Hotplate

Heating range of up to 400 C, this hotplate is designed for even heating. A polypropylene end panels prevents chemical attack. Ideal for boiling solutions. Size: 200 x 180mm. Coated **PTFE** for chemical resistance and a hard wearing surface.

### Hotplate/Magnetic stirrer

Hotplate/Magnetic stirrer with hard wearing **PTFE** top. The hotplate stirrer combination allows for even heating across the top plate which is insulated from the body. The simmerstat control allows heating up to 400C, and stirring between 150 and 1500 RPM. 200x180mm. Thermostat control also available.



**GADGETS**

**CONTROL COMPANY** offer a wide range of laboratory accessories which are accompanied by a Traceable Calibration Certificates. We are pleased to offer this range in Australia. Below is a selection of just some of the products available.



**5011 Traceable®**  
**Giant-Digit™ Timer**



**5007 Traceable®**  
**Lab-Top Timer**

**TIMERS**

**5000 Traceable®**  
**Three-channel alarm timer**



**5022 Traceable®**  
**Jumbo Timer**



**4127 Traceable®**  
**Refrigerator/Freezer Thermometer**



**4425 Traceable®**  
**Workhorse™ Thermometer**

**THERMOMETERS**

**4484 Traceable®**  
**Infrared Wide-range Thermometer 50:1**

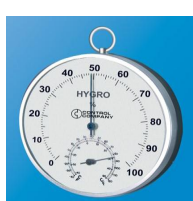


**4052 Traceable®**  
**Long-Stem Thermometer**

All Traceable® products are supplied with a Traceable® Calibration Certificate from Control Company's ISO17025 Calibration Laboratory.



**4189 Traceable®**  
**Hygrometer/Thermometer w/computer output**



**4186 Traceable®**  
**Dial Hygrometer/Thermometer**

**HUMIDITY MEASURING**

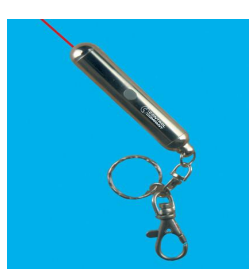
**4380 Traceable®**  
**Radio-Signal Remote Hygrometer/Thermometer**



**4184 Traceable®**  
**Jumbo Humidity/Temperature**



**3475 Traceable®**  
**SpatulaBalance™**



**3141 Key-Chain**  
**Micro-Laser Pointer**

**OTHER INSTRUMENTS**  
Including -  
anemometers  
conductivity  
dissolved O<sub>2</sub>  
light meters  
and many more



**3252 Traceable®**  
**Dual-Display Light Meter**



**4262 Traceable®**  
**Tachometer w/Red LED Pointer**



**36 Holland Street  
Thebarton SA 5031**

**Phone: 08 8234 7955**

**Fax: 08 8234 7897**

**Email: [info@adelab.com.au](mailto:info@adelab.com.au)**

**Website: [www.adelab.com.au](http://www.adelab.com.au)**