



LANDSCAPE SOLUTIONS

AUSTRALIA'S LEADING MASONRY MANUFACTURER

From the front driveway to the backyard entertaining area, Adbri has a paver for every application.

This selection guide contains information and inspiration to help you choose the best product for your paving project.

Paving is the foundation of an outdoor space and can be used to extend family living areas by creating new outdoor rooms, linking your home together with paths, reclaiming unused land with stepping stones and to build driveways that will leave a lasting first impression of your home.

Enhance your home with a paving solution from Adbri Masonry.



JASON HODGES *LANDSCAPING EXPERT*

Jason Hodges is Adbri's DIY landscaping expert! Jason has over 20 years experience as a landscaper and more recently, an international award winning landscape designer. Learn from Jason and look out for his hints and tips to help you get the most from your outdoor space.

A stylized, handwritten signature of Jason Hodges in black ink.

Jason Hodges | Landscaping Expert

ADD VALUE TO YOUR PLACE THIS WEEKEND

Add life to unused spaces

STEPSTONE PATH



Extend your living space
with a new outdoor room

COURTYARD

For the full range of my hints, tips and DIY videos scan the
QR code or visit us at adbrimasonry.com.au/diy



Euro[®] Stone

Euro[®] Stone is a premium large format paver available in two sizes which features a highly detailed, exposed aggregate surface texture that compliments every landscape environment.

‘I love the textured feel that this architecturally inspired paver adds to outdoor spaces.’

Jason Hodges | Landscaping Expert



RECOMMENDED FOR



Courtyards



Paths



Steps



Pool Surrounds



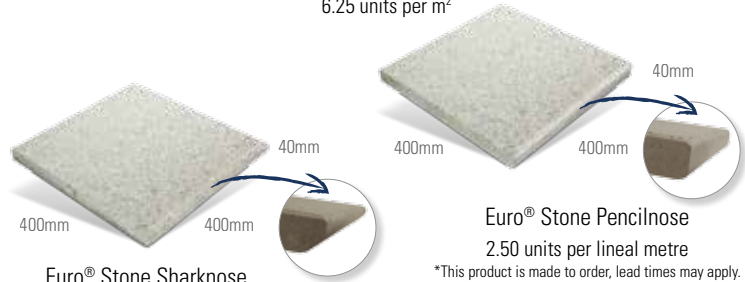
Driveway Safe*

**When laid onto a suitable concrete base.*

AVAILABLE SIZES



Euro® Stone
6.25 units per m²



Euro® Stone Sharknose
2.50 units per lineal metre

**This product is made to order, lead times apply.*

Euro® Stone Penclnose
2.50 units per lineal metre

**This product is made to order, lead times may apply.*



Euro® Stone
4.16 units per m²

600X400 SIZE IS ONLY AVAILABLE IN THE PRAGUE AND ZURICH COLOURS



Euro® Stone | Zurich



For more inspirational imagery
scan the QR code or visit
adbrimasonry.com.au



COLOUR OPTIONS

RIVERINA



ZURICH*



PRAGUE*



Whilst these swatches provide a good indication of the products colour, you should always sight product samples before use. Due to natural variations in aggregates, colours may vary.

* 600 x 400 available in Zurich & Prague only

Euro® Classic



Euro® Classic | Athens

RECOMMENDED FOR



Courtyards



Paths



Steps



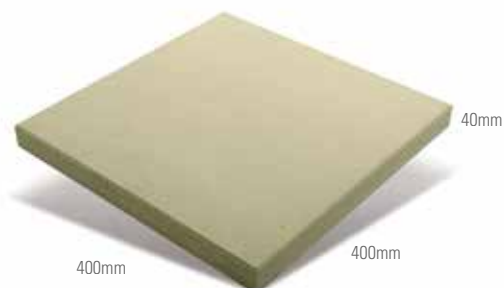
Pool
Surrounds



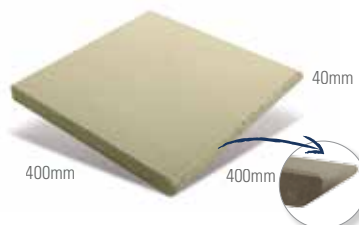
Driveway
Safe*

**When laid onto a suitable concrete base.*

AVAILABLE SIZES

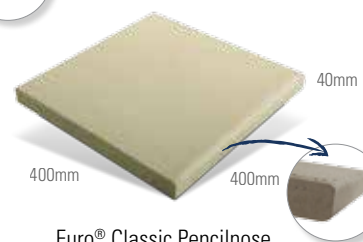


Euro® Classic
6.25 units per m²



Euro® Classic Sharknose
2.50 units per lineal metre

**This product is made to order, lead times apply.*



Euro® Classic Pencilnose
2.50 units per lineal metre

**This product is made to order, lead times apply.*

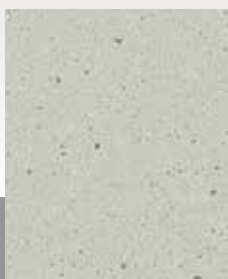


For more inspirational imagery
scan the QR code or visit
adbrimasonry.com.au



COLOUR OPTIONS

CYPRUS



ATHENS



PRAGUE



Whilst these swatches provide a good indication of the products colour, you should always sight product samples before use. Due to natural variations in aggregates, colours may vary.

Euro® Slate



Euro® Slate | Athens

RECOMMENDED FOR



Courtyards



Paths



Steps



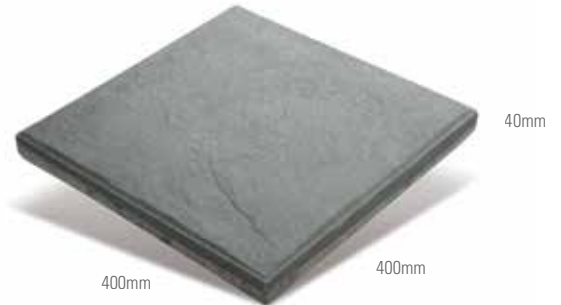
Pool Surrounds



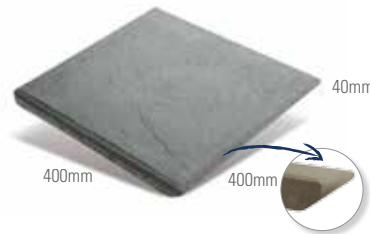
Driveway Safe*

*When laid onto a suitable concrete base.

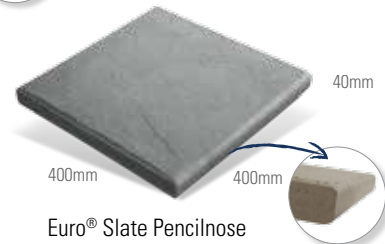
AVAILABLE SIZES



Euro® Slate
6.25 units per m²



Euro® Slate Sharknose
2.50 units per lineal metre
*This product is made to order, lead times apply.



Euro® Slate Pencilnose
2.50 units per lineal metre
*This product is made to order, lead times apply.



For more inspirational imagery
scan the QR code or visit
adbrimasonry.com.au

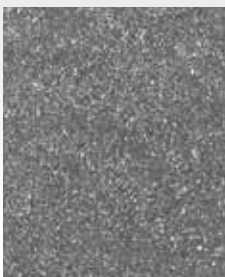


COLOUR OPTIONS

ATHENS



PRAGUE



Whilst these swatches provide a good indication of the products colour, you should always sight product samples before use. Due to natural variations in aggregates, colours may vary.

Quadro®

Quadro® is a multi-functional large format paver which is perfect for DIY projects around the home. Light in weight and easy to install, Quadro® will enhance your Outdoor Room with contemporary aesthetics.



RECOMMENDED FOR



Courtyards



Paths

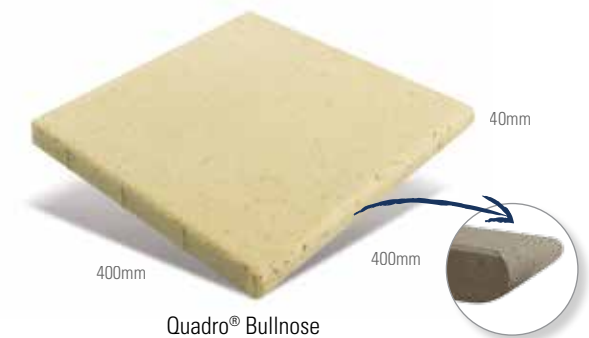


Steps

AVAILABLE SIZES



Quadro®
6.25 units per m²



Quadro® Bullnose
2.50 units per lineal metre
MADE TO ORDER

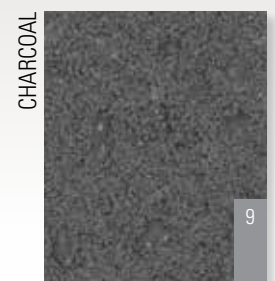


For more inspirational imagery
scan the QR code or visit
adbrimasonry.com.au



COLOUR OPTIONS

Whilst these swatches provide a good indication of the products colour, you should always sight product samples before use. Due to natural variations in aggregates, colours may vary.



Stradapave®



Stradapave® | Oatmeal

RECOMMENDED FOR



Courtyards



Paths



Steps



Driveway
Safe

AVAILABLE SIZES



Stradapave® 50

11.10 units per m²

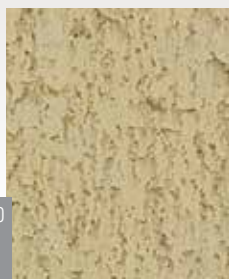


For more inspirational imagery
scan the QR code or visit
adbrimasonry.com.au



COLOUR OPTIONS

OATMEAL



SUNSTONE



CHARCOAL



Whilst these swatches provide a good indication of the products colour, you should always sight product samples before use. Due to natural variations in aggregates, colours may vary.

Havenslab®



Havenslab® | Charcoal

RECOMMENDED FOR



Courtyards



Paths



Steps

AVAILABLE SIZES



Havenslab®
12.50 units per m²



For more inspirational imagery
scan the QR code or visit
adbrimasonry.com.au



COLOUR OPTIONS

OATMEAL



SUNSTONE



CHARCOAL



Whilst these swatches provide a good indication of the products colour, you should always sight product samples before use. Due to natural variations in aggregates, colours may vary.

Havenbrick®



RECOMMENDED FOR



Courtyards



Paths



Driveway
Safe

AVAILABLE SIZES



Havenbrick®
50 units per m²



For more inspirational imagery
scan the QR code or visit
adbrimasonry.com.au



COLOUR OPTIONS

OATMEAL



SUNSTONE



CHARCOAL



Whilst these swatches provide a good indication of the products colour, you should always sight product samples before use. Due to natural variations in aggregates, colours may vary.

Havenpave®



RECOMMENDED FOR



Courtyards



Paths



Driveway
Safe

AVAILABLE SIZES



Havenpave®
25 units per m²



For more inspirational imagery
scan the QR code or visit
adbrimasonry.com.au



COLOUR OPTIONS

OATMEAL



SUNSTONE



CHARCOAL



Whilst these swatches provide
a good indication of the products
colour, you should always sight
product samples before use.
Due to natural variations in
aggregates, colours may vary.

Turfstone®



Turfstone® | Natural

RECOMMENDED FOR



Paths



Driveway
Safe



Agricultural



Permeable

AVAILABLE SIZES



Turfstone®
9 units per m²



For more inspirational imagery
scan the QR code or visit
adbrimasonry.com.au



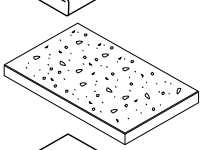
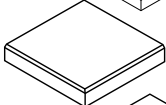
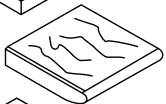
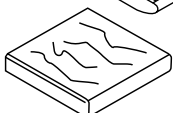
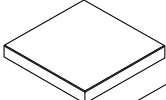
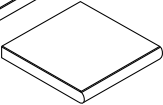
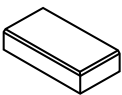
COLOUR OPTIONS

NATURAL



Whilst these swatches provide a good indication of the products colour, you should always sight product samples before use. Due to natural variations in aggregates, colours may vary.

PAVER RANGE

Products	Type	Size (mm) l x d x h	No. per m ²	Approx. Unit Weight (kg)	No. per pallet	Colours
                	Euro® Stone	400 x 400 x 40	6.25	15.00	108	Prague Riverina Zurich
	Euro® Stone Sharknose	400 x 400 x 40	2.50 L/m	15.00	108	
	Euro® Stone Pencilnose	400 x 400 x 40	2.50 L/m	15.00	108	
	Euro® Stone	600 x 400 x 40	4.16	20.35	72	Prague Zurich
	Euro® Classic	400 x 400 x 40	6.25	14.70	108	Athens Cyprus Prague
	Euro® Classic Sharknose	400 x 400 x 40	2.50 L/m	14.50	108	
	Euro® Classic Pencilnose	400 x 400 x 40	2.50 L/m	14.50	108	
	Euro® Slate	400 x 400 x 40	6.25	14.70	108	Athens Prague
	Euro® Slate Sharknose	400 x 400 x 40	2.50 L/m	14.50	108	
	Euro® Slate Pencilnose	400 x 400 x 40	2.50 L/m	14.50	108	
	Quadro® 40 Smooth	400 x 400 x 40	6.25	14.04	117	Charcoal Fossil Oatmeal Sunstone Terracotta
	Quadro® 40 Bullnose (Made to Order)	400 x 400 x 40	2.50 L/m	14.04	117	
	Stradapave® 50	300 x 300 x 50	11.10	9.20	160	Oatmeal Sunstone Charcoal
	Havenslab®	400 x 200 x 50	12.5	8.65	180	Oatmeal Sunstone Charcoal
	Havenbrick®	200 x 100 x 50	50	2.10	726	Charcoal Oatmeal Sunstone
	Havenpave®	200 x 200 x 50	25	4.10	360	Charcoal Oatmeal Sunstone
	Turfstone®	390 x 290 x 90	9	13.07	96	Natural

PAVER INSTALLATION GUIDE

Adbri Masonry Pavers can be laid by two methods; Rigid Installation (with a concrete basecourse) or Flexible Installation (a granular basecourse). Properly constructed rigid pavements can be more stable where soil conditions are poor, (e.g. reactive or poorly drained clay).

Drainage is most important for a successful paving project. Care must be taken to grade the basecourse and the finished pavement level at a minimum gradient of 2% (or 100mm per 5.0 lineal metres). Refer to the CMAA's PA05 document for further drainage details.

The laying of pavers on a sand bed on a concrete slab is not addressed in this

brochure. It can be done, but efflorescence staining can occur on pavers laid in this manner if there is inadequate drainage of the concrete slab.

For further information please refer to: Adbri Masonry Paving Installation Guide at adbrimasonry.com.au and Concrete Masonry Association of Australia (CMAA) Guidelines at www.cmaa.com.au: - PA02 Concrete Segmental Pavements - Design Guide for Residential Accessways and Roads, PA05 Concrete Flag Pavements - Design and Construction Guide.

Note: The following is a guide only and in no way replaces the services of a professional design consultant.

FLEXIBLE INSTALLATION

Step 1. Excavation: Excavate your area to allow for a granular* basecourse, (75mm for pedestrian traffic and 175mm for driveways after compaction), plus 20-25mm of washed coarse bedding sand plus the thickness of the paver.

Note: Pavers for driveways should be at least 50mm thick.

**Class A road-base or 20mm graded crushed rock are suitable materials.*

Step 2. Compact the Basecourse: Place the granular basecourse to the desired depth and compact using a vibrating plate machine. Ensure your basecourse is firm and of uniform thickness. If the area needs to be built up then do so in compacted 75mm layers. Up to 5% of cement can be blended in to the granular basecourse for more stability if required.

Step 3. Bedding Course: Spread clean coarse bedding sand over the compacted basecourse to a depth of 20-25mm and screed to a flat even surface.

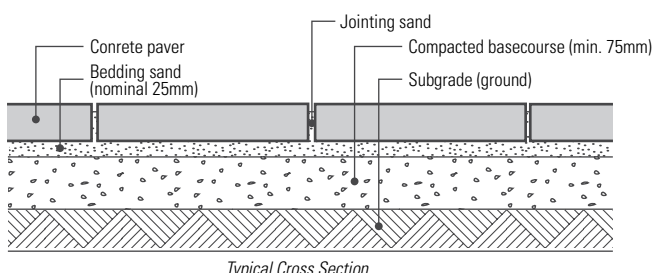
Step 4. Lay the Pavers: Begin laying pavers from one corner, utilising a string line to keep the lines straight. Don't walk on the sand, walk on the pavers already laid.

Step 5. Edging: Edge restraints are essential to prevent lateral movement of the paved area and must be installed prior to the application of the jointing sand. Refer to the Edging section for details.

Step 6. Joints: Adbri Masonry pavers in this application should be laid with a 3 - 5mm gap. Fill this joint with a fine washed sand or specialised jointing sand as the paving proceeds. This will minimise movement in the pavers when compacting.

Step 7. Final Compaction: To compact the pavers place a flat heavy board across the pavers and hit with a rubber mallet. For pavers of 50mm depth or greater, a vibrating plate machine should be used for the best results (more jointing sand should be added as pavers are compacted). It is recommended a piece of carpet be placed under the plate to protect the pavers from chipping.

Flexible Installation



Typical Cross Section

RIGID INSTALLATION

Step 1. Excavation: Excavate your area to allow for a 75mm thick, (or 100mm for a driveway) concrete slab, (rough screeded 20MPa grade with SL82 reinforcement at 30mm and contraction joints at 3 metre centres), plus 15-25mm of mortar plus the thickness of the paver.

Note: Pavers for driveways should be at least 50mm thick. The concrete should be wet cured for at least 7 days before laying. 100mm driveway slab is only applicable for vehicles <1.5tonne. Any vehicle loads exceeding this will require an independent slab design to be completed.

Step 2. Apply the Bond Coat: Prepare a cement slurry by mixing 6 parts fine washed sand to 1 part cement. Apply a thin coat (about 1mm) to the working area of the slab with a broom and to the underside of each Adbri Masonry paver just prior to laying.

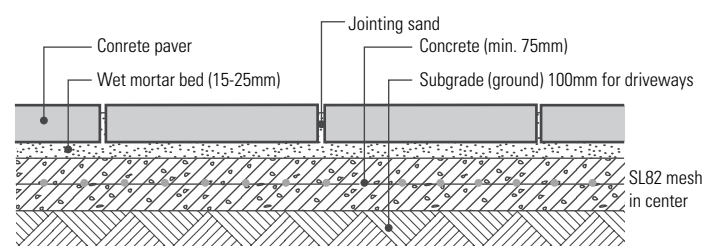
Step 3. Lay the Pavers: Using a string line to keep the lines straight, lay the pavers on a wet mortar bed of 15-25mm thickness. Mortar should be mixed at a ratio of 3 parts washed concrete sand to 1 part cement. Do not make the mortar too wet. The mortar should be stiff enough to make a fist sized ball which holds its shape. Pavers should be laid to form a smooth finished surface by using a level and lightly tapping with a rubber mallet.

Note: Do not add extra water to retemper any stiffening mortar. Make a fresh batch instead; enough to last 30 - 45 minutes laying.

Step 4. Joints: Adbri Masonry pavers should be laid with a 3mm-10mm joint between the units. Joints 3mm-5mm in width shall be filled with a jointing sand. For wider joints, it is recommended that a non shrink grout be used.

Notes: Do not bridge pavers over the contraction joints in the concrete. Pavers must be cut and the joints filled with a flexible compound as per Engineers specifications. If any mortar is spilled on the pavers during installation remove immediately using a clean sponge and water. Do not traffic finished pavement for 72 hours.

Rigid Installation



Typical Cross Section

PAVER CUTTING

You will generally find that some cutting of pavers will be required to fit into specific areas.

An angle grinder with a masonry blade is suitable for good results. On jobs where a high number of cuts are required or the paving units are large, it is easier to hire a brick saw with a diamond blade - remember ear muffs, eye protection and a mask.

EDGING

It is important to have a good edge restraint to stop the pavers from spreading and to ensure that the bedding sand is not washed away. Here are two general techniques:

By embedding a paver on edge in concrete

By embedding the outside paver in concrete to approximately half the height of the paver and back filling with suitable garden material

SWIMMING POOLS

> Adbri Masonry pavers meet Australian slip resistant standards, making them ideal for swimming pool surrounds. Only Euro® range pavers are suitable for use around pools.

> Adbri Masonry pavers while being strong and durable have a soft feel, making them comfortable under bare feet or for sitting along pool edges.

> Adbri Masonry manufacture some pavers specifically for salt resistant applications, necessary for around salt chlorinated swimming pools. This range varies between States so please consult your local Adbri Masonry distributor or Adbri Masonry product guide for specific localised advice.

> Adbri Masonry recommend sealing pavers likely to be subjected to salt attack.

MAINTENANCE

Pavers will require some ongoing maintenance to keep looking in a pristine condition. Dirt and dust should regularly be removed whilst any weed growth should be sprayed and controlled. Ants should not be allowed to nest in base materials.

CLEANING

All pavers will require cleaning from time to time. Oil, rust, efflorescence and other stains can detract from the appearance of the paver. Proprietary cleaning products for concrete pavers (and retaining walls) are readily available. Please contact your local distributor or Adbri Masonry for further information. Do not use Hydrochloric Acid.

SEALING

If a more protective surface is required then Adbri Masonry suggest you seal your paving.

There are a number of sealers specifically for concrete paving so please contact your local distributor or Adbri Masonry for further information.

Note: All coloured product should be ordered at the one time to reduce the risk of batch variation. No claims will be accepted once product has been installed.

How many pavers will you need? Using the helpful diagrams below, measure the desired space you would like to pave. This will give you a total square meter figure (Length(m) x width (m) = area (m²).

TIP: You can check out the paving calculator at www.adbrimasonry.com.au/calculator to see how many pavers you will need for your area.

For rectangular areas

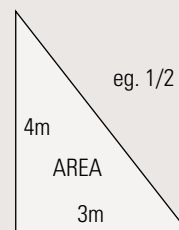
base(m) x height(m) = area(m²)



eg. 3m x 5m = 15m²

For triangular areas

1/2 x base(m) x height(m) = area(m²)



eg. 1/2 x 3m x 4m = 6m²

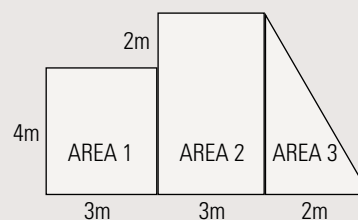
For odd shaped areas - break into sections

Area 1: 4m x 3m = 12m²

Area 2: 6m x 3m = 18m²

Area 3: 1/2m x 6m x 2m = 6m²

Total area to be paved = 36m²



PAVER CARE

PAVING ADVICE

For in depth paving advice, tips and hints please visit our DIY centre at adbrimasonry.com.au/diy or download the CMAA Paving Maintenance Guide from cmaa.com.au.

CLEANING

All pavers will require cleaning from time to time. Oil, rust, efflorescence and other stains can detract from the appearance of the paver. Proprietary cleaning products for concrete pavers (and retaining walls) are readily available.

MAINTENANCE

Pavers will require some ongoing maintenance to keep in a pristine condition. Dirt, dust and leaves should regularly be removed whilst any weed growth should be sprayed and controlled.

SEALING

If the pavers are to be used around a swimming pool, or exposed to salt water then Adbri Masonry strongly recommend sealing your paving. We recommend you do this for aesthetic and maintenance purposes, not for structural reasons.

DIY with Adbri

1

CHOOSE PRODUCT



Select a paver by browsing through this catalogue or scanning the QR code and searching online at adbrimasonry.com.au

2

CALCULATE QUANTITY



Calculate the amount of pavers you require with our easy online calculator. Visit adbrimasonry.com.au or scan the QR code above.



Order 5% more for every paving project to account for cuts/breakages.



4 Simple Steps ...

3 SELECT LAYING PATTERN

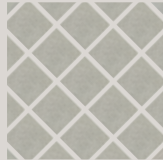
SQUARE PAVERS



Stackbond



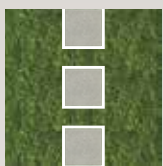
Stretcherbond



45° Stackbond

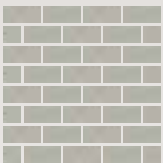


45° Stackbond
with header course

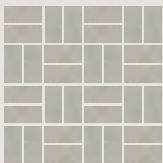


Step Stones

RECTANGULAR PAVERS



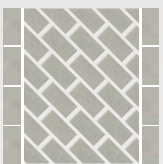
Stretcherbond



Basketweave



Herringbone



45° Stretcher
with header course



45° Herringbone
with header course

4 LAY YOUR PAVERS



STEP BY STEP VIDEO GUIDES

For a complete step by step set of laying instructions including PDF download and DIY videos visit our website at adbrimasonry.com.au/diy



For DIY videos, hint and tips as well as more inspirational galleries visit adbrimasonry.com.au.

Let's do a project today!

DIY
WITH ADBRI





BRICKS | BESSER® BLOCKS | PAVERS | RETAINING WALLS

Contact Us



adbrimasonry.com.au



1300 365 565



enquiries@adbri.com.au

Free pallet collection service freecall 1800 674 961 or drop pallets back to place of purchase or lodge your pallet pick up online at adbrimasonry.com.au

Pallets remain Adbri Masonry property. Please telephone us for collection of pallets and keep pallets empty and stacked in a safe and accessible area for collection.

Paving Landscape Solutions Brochure

Sth QLD - September 2017

ABM1140

Adbri Masonry Pty Ltd

ABN: 31 009 687 521

Euro®, Havenbrick®, Havenpave®, Quadro®, Turfstone® and the Adbri Masonry logo are registered trademarks of Adbri Masonry Pty Ltd.

adbriMASONRY
working together