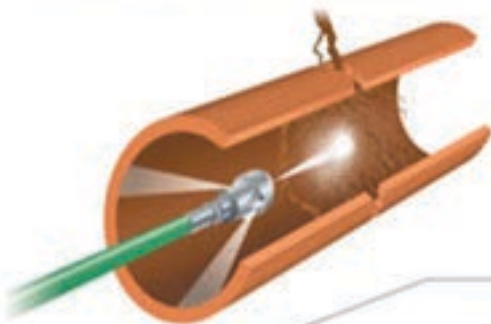
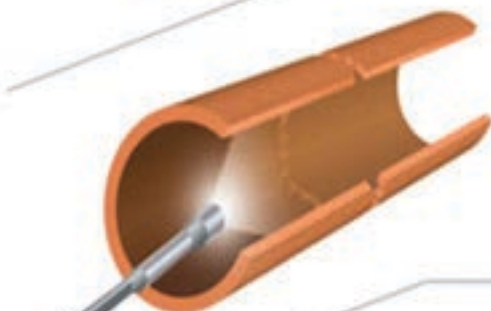


# How it works...



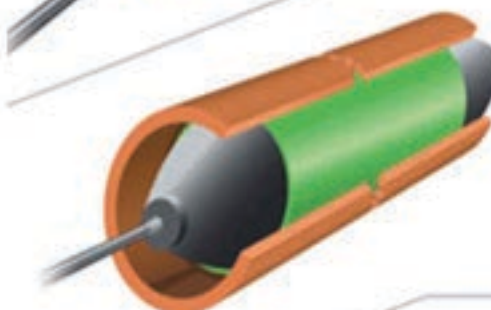
## **1 Unblock**

*Remove and clean the blockage from the damaged pipe using a high pressure jet blaster.*



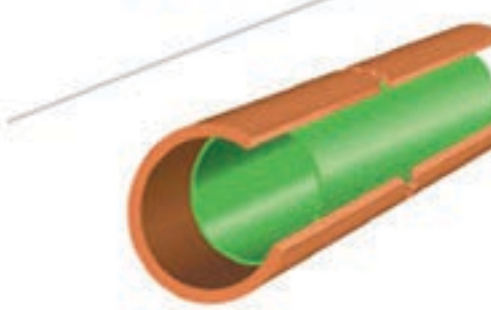
## **2 Inspect**

*Inspect and mark damaged section of pipe using CCTV Camera.*



## **3 Insert**

*Insert the patch into the pipe.*



## **4 Done**

*2 hours later, completed relining patch permanently repairs damaged host pipe.*