

## Helping you create your perfect healthy smile.

GC Tooth Mousse is an essential part of a good oral health program which your dental professional will prescribe for you. GC Tooth Mousse contains 10% (wt) RECALDENT™ (CPP-ACP) to provide you with a concentrated source of bio-available calcium and phosphate for strengthening and protecting your teeth.

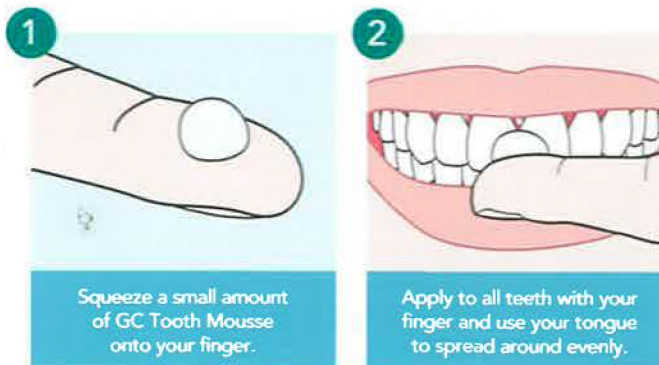


## What is RECALDENT™ (CPP-ACP)?

Nature has developed highly efficient protein systems in saliva, blood and milk that stabilise and transport calcium and phosphate, which are the fundamental building blocks of our teeth and bones. Cow's milk is recognised as having the most effective system for delivery of calcium and phosphate. Extensive research over the past 25 years has refined the specific milk peptide which transports these essential minerals to help build, strengthen and protect our teeth – casein phosphopeptide amorphous calcium phosphate – otherwise known as RECALDENT™ (CPP-ACP).



## So easy to use!



- 3 For maximum benefit, leave GC Tooth Mousse on your teeth for as long as possible. The minimum recommended application time is three minutes. At the end of the application you can expectorate, rinse or swallow the remainder.



GC Asia Dental Pte. Ltd  
Changi Logistics Centre  
19 Loyang Way #06-27 Singapore 508724  
Tel + 65 6546 7588 Fax + 65 6546 7577  
www.gcasia.info © GC Corporation 2010



GC Tooth Mousse contains RECALDENT™ (CPP-ACP), a unique ingredient developed at The School of Dental Science, The University of Melbourne, Victoria, Australia. RECALDENT and RECALDENT Device are trademarks used under licence. GC Tooth Mousse should not be used by people with milk protein allergies. If any allergic reaction occurs, this may indicate sensitivity to the benzoate preservatives, or to some other component of the product. In this event, discontinue use of the product and contact your physician.

HS Code: GC-TMBROADULT

GC

## GC Tooth Mousse for Adults

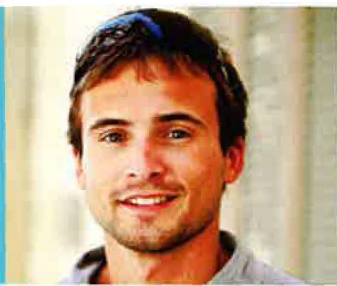


Nature  
knows  
best

Made from milk



## GC Tooth Mousse for Tooth Erosion and Wear

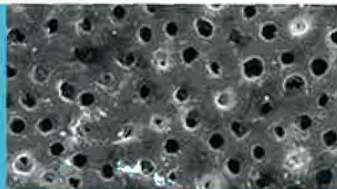


### CASE STUDY - PROF. IAN MEYERS, UNIVERSITY OF QUEENSLAND

Jason is a 34 year old electrician with considerable tooth wear, jaw clicking and sensitive lower front teeth. Jason is generally healthy, not under medication, however on further testing Jason appears to be dehydrated leading to insufficient saliva being produced. Saliva protects teeth and a lack of it will accelerate wear problems.

Jason started a home care program applying GC Tooth Mousse twice daily and using a high fluoride toothpaste. Several of his teeth were restored and crowns placed to improve looks and function. Ongoing review and maintenance are essential to ensure he continues to benefit from his home care treatment.

## GC Tooth Mousse for Tooth Sensitivity



Exposed dentine shows opened dentinal tubules

Sensitivity in teeth comes from open dentine tubules, and is particularly prevalent when the patient suffers from gastric reflux. The reflux causes repeated exposure to gastric contents which prevents any protective organic or inorganic surface film from forming to cover the tubules. GC Tooth Mousse exerts a rapid desensitising effect through immediate protein binding followed by the deposition of calcium and phosphate compounds within exposed dentine tubules.

PROF. LAURIE WALSH, UNIVERSITY OF QUEENSLAND

## GC Tooth Mousse for Tooth Whitening

### CASE STUDY - DR BRETT DORNEY, PYMBLE NSW

A difficult case of fluorosis or internal tooth staining on a 26 year old patient that required two in-surgery power bleaching appointments one month apart. GC Tooth Mousse was recommended prior to treatment to reduce sensitivity often experienced during this procedure, and to give an improved final result. In between appointments GC Tooth Mousse was applied twice daily.



Before whitening



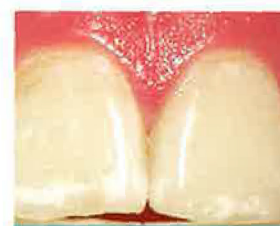
After whitening and twice daily application of GC Tooth Mousse

Mr C. Müller

## GC Tooth Mousse for Mild Fluorosis

In many cases of mild fluorosis, a single non-surgical treatment sequence of etching/microabrasion followed by use of GC Tooth Mousse can enhance appearance. The visual effect occurs through a slow chemical reaction, and thus patients should expect to see changes over several weeks rather than instantly.

PROF. LAURIE WALSH, UNIVERSITY OF QUEENSLAND



Before treatment



After treatment

Prof. L Walsh

# Application guide

Indication	How often	Duration
<b>General prevention</b>	Each evening after flossing and brushing	Ongoing as part of a general prevention program
<b>Additional comments:</b> Regular use of GC Tooth Mousse will help maintain a healthy oral environment		
<b>Whitening (prior to starting treatment)</b>	Twice a day, after flossing and brushing	Start 1-2 weeks before whitening procedure
<b>Additional comments:</b> Pre-whitening applications of GC Tooth Mousse will help reduce the degree of whitening sensitivity		
<b>Whitening (during treatment)</b>	Following removal of the whitening tray	Finish 2 weeks after the final whitening application
<b>Additional comments:</b> The whitening tray can also be used to apply GC Tooth Mousse		
<b>Fluorosis and white spot lesions</b>	Twice a day, after flossing and brushing	8-12 weeks and thereafter as required
<b>Additional comments:</b> There are different types of white spots and your dental professional may need to pre-treat the white spot surface prior to starting application of GC Tooth Mousse		
<b>Tooth erosion and wear</b>	Minimum twice a day, before and after exposure to acid challenges	Until risk of acid exposure is reduced
<b>Additional comments:</b> Where possible, reduce acid exposure and increase saliva stimulation		
<b>Sensitive teeth</b>	Twice a day during acute phase, followed by once a day application	4-6 weeks or until resolved
<b>Additional comments:</b> If sensitivity persists, additional diagnostic testing could be required		