



ROTH

Commercial Industrial Plumbing

Building on a Platform of Excellence
to Drive Progression through Innovation

Contact

Justin Roth
Managing Director

Justin Roth Plumbing Pty Ltd
T/A Roth Plumbing

PO Box 1634
51 Tanby Road
Yeppoon Qld 4703

Phone: (07) 4925 0343

Email: admin@rothplumbing.com.au

Fax: (07) 4925 0743

Web: www.rothplumbing.com.au



An Introduction

From simple origins in Yeppoon in 1998, Roth Plumbing has evolved under the guidance of Justin and Kellie Roth to be recognized as a serious competitor in the delivery of exceptional industrial and commercial plumbing services throughout Central Queensland and the greater Bowen Basin region.

Built on the philosophy of pursuing progression through innovation and continuous improvement, Justin and Kellie bring their innate understanding of what it takes to deliver a project in a professional manner, on schedule, within budget, to the satisfaction of clients, and – most importantly – safely.

A pro-active approach to 'doing business' with a complete focus on developing solutions which meet and exceed client expectations has enabled Roth Plumbing to successfully make the step from being a leading player in the domestic / commercial plumbing space to a business specializing in commercial, industrial and mining applications.



Our People

Roth Plumbing's approach is simple. Bring on qualified people, continue to train them, develop a culture built on safety-first, and provide work which delivers great job satisfaction.

Our on-site teams are all trade qualified or apprentice plumbers; Our Supervisors hold extensive experience in a hands-on supervisory capacity together with their G2/S1/S2/S3 qualifications. All staff hold the relevant tickets and competency standards for the work they are going to deliver. Without exception.



Commercial Industrial Plumbing

Our Clients include..

- Atco Structures and Logistics Australia
- BHP Billiton BMA
- McNab Constructions
- Hutchinson Builders
- Dowdens Pumping
- FK Gardner
- CBD Property Solutions
- IDEC
- Pantex Pty Ltd
- Cement Australia
- Bluescope Steel
- John Holland
- Holcim
- Multiple Government Agencies



Our Success

Our role is to provide certainty for our people through building a sustainable business which is here today, and into the future. We do this through:

1. An holistic approach to Safety
2. Building Repeat Business
3. Looking after our People
4. Implementing Sustainable Business Practices
5. Pursuing Best Practice Standards



Our Safety - and Yours

In recent years, the direction of the business and its growth has been based on our complete focus on the safety and well-being of our team, our clients and the impact of our actions on our people, our clients, and the wider community.

Our core philosophies are well matched by the commitment to safety found in the commercial, mining and industrial sectors. We work in line not just with industry best practice, but our own desire to meet and exceed industry expectations in safety performance.

Our systems are strong, and our staff all live and breathe 'safety as a way of working'. We understand the impact on our business, and the business of our clients, when safety lapses. Every task asked of us is risk assessed, providing confidence that if one of our team comes across a task or process that is unsafe, they will make it safe.

The success of this commitment to safety is shown in our record of zero reportable incidents in almost 15 years of operation.



ROTH

Commercial Industrial Plumbing



Plumbing

RPZ testing, mains and sewer connections/
diversions, trade waste, fit-outs, stormwater.



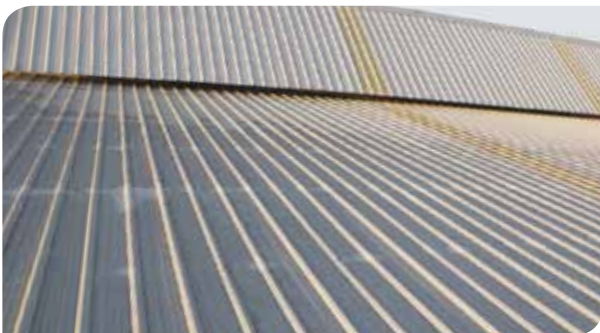
Solar

Cost effective solar hot water installations
for all size projects, suiting any needs



Pumps

Grease trap pump out wells, sewer pump
stations, heat pumps, water transfer applications



Roofing

All size/height roofing, wall cladding,
insulation, guttering



Commercial Industrial Plumbing

Our Stability – Your Peace of Mind

Roth Plumbing hold all required licenses and accreditations, hold extensive insurance policies to cover every aspect of our work, and furthermore have the financial capacity to successfully scale our business to meet the fluctuating demands of our project driven client base

At Roth Plumbing, we believe in building relationships with our clients, our teams and our suppliers which are based on mutual collaboration, respect, and a clear focus on developing win-win strategies to deliver the outcomes you, our client, is expecting.

Our Managing Director is hands on, heavily involved in our projects, and through the structure of our teams, keeps in –touch with what is really happening on the ground.

Our team, from the Managing Director down, are all charged with the responsibility of working with our clients to understand their challenges, get their vision and then develop strategies and project plans which deliver and exceed expectations.



Major Projects - A Snapshot

Roth Plumbing have successfully completed a significant number of commercial, industrial and mining projects, including but not limited to the following:



« GLNG Curtis Island

1,650 Man Camp. All sewer, storm water, water and fire hose reel connection installation to all infrastructure.

Duration | 18 Months

BMA Saraji »

Supply & installation of airline reticulation system.
HSE Mining Building

Duration | 3 Weeks



« BMA Saraji

Installation of all pipework associated with fire hose reels in fire suppression system upgrade.

Duration | 5 Months

New Roof installation to mine site buildings.

Duration | Various



ROTH

Commercial Industrial Plumbing



« Local Council Authority

Mains sewer re-alignment
and Pits installation project

Duration | 6 Months

Hastings Deering »
Rockhampton

Installation of new Diesel, Oil and Waste Oil
Reticulation System to new building
expansion project.

Duration | 6 Months



Machinery | Our Earthmoving Capabilities



Excavators

We have three Caterpillar excavators at our disposal within the company, being 3.5t, 5.5t and 11t.

All machines come with a diverse range of attachments including a wide range of bucket types and sizes, rippers, compaction rollers, various sized auger drives, rock hammer, and power head.



Bobcat

Our Caterpillar 279 Highflow all terrain tracked front loader is more than capable in any situation and a valuable addition to any jobsite.

This machine comes with 4 in 1 bucket, auger drive c/w three sizes, 150mm chain trencher, spreader bar, forklift attachment, multi-directional dozer/stickrake blade and ripper.



Trucks

Two tippers are also part of the fleet for earth moving and machinery transport, one being 8.5t GVM and the other being 16t GVM.



Light Vehicles

We have a wide range of modern light vehicles including mine, and heavy industrial compliance.

ALL VEHICLES AND MACHINERY ARE REGULARLY SERVICED, HAVE OPERATOR LOG BOOKS AND ARE SITE COMPLIANT DEPENDING ON THE NEEDS OF OUR CLIENTS.