

# Capability Statement

***"Never Accept a lift from a stranger"***



03 4333 0065



[advancedcranes.com.au](http://advancedcranes.com.au)

CRANE HIRE, TRANSPORT HIRE & ACCESS HIRE

Available 24/7

# Our Mission

*Our mission is to become the lifting partners of choice for our customers, by offering a full range of lifting services, all whilst supervised under the watchful eye of our qualified and experienced team.*

# About Us

*At Advanced Cranes, we are the specialists in any lift, large or small. Always providing outstanding personalized services to our customers, we meet our clients' needs and highest expectations.*

*Advanced Cranes aims to deliver services in a manner well above that of the industry standard throughout Australia. Our staff have extensive experience in the industry. We provide a safe and economical, Crane Hire, Rigging and Transport Service throughout Melbourne, Ballarat, Colac, Greater Victoria and Australia wide.*

*Advanced Cranes and Rigging has grown from one 20t Franna, to an extensive fleet of mobile cranes capable of lifting to 1200t.*



# Our Equipment

- LIEBHERR Mobile Cranes Ranging From 20T up to 1200T
- Crawler Cranes ranging from 2T to 600T
- FRANNA Range from 15T to 40T
- City Cranes ( Bubble) from 7T to 22T
- Spider Cranes
- Crane Trucks
- Heavy Haulage floats and dolly combinations
- Prime Movers ( Flat tops, drop decks/extendable's)
- Tilt Tray
- Tray Trucks
- Escort vehicles
- Telehandlers
- Boom Lifts & Scissor Lifts
- All Ancillary Required to Perform any Lift

## Personnel

- Mobile Crane Operators
- Crawler Crane Operators
- Tower Crane Operators
- Advanced and Intermediate Riggers
- Dogman
- Steel Erection Crews
- Tilt Supervisors Panel Set out and installation crew
- Electrical Spotters
- Boilermakers
- Heavy Vehicle Operators ( Rigid, Semi, B Double and Oversize)
- Certified Pilots and Escorts
- Caulkers, Grouters and Patchers
- Lift Study Engineers
- Project Managers
- Supervisors



# Safety

*Advanced Cranes is committed to providing a safe and healthy workplace for its contractors and employees. We strive to exceed health and safety standards whilst supplying a first-class service to our clients.*

*Advanced Cranes prides itself on managing all OH&S requirements in accordance with the OH&S act of Australia standards, including relevant Codes of Practice.*

*Advanced Cranes machinery is subject to Annual Crane Safe inspections in addition to our company maintenance program carried out by our full-time mechanic's.*

*At Advanced Cranes we pride ourselves on pre lift requirements and planning to ensure all lifts are completed safely and efficiently. We have dedicated resources focused on the investigation and generation of Safe Work Methods Statements, JSA's and in-depth Lift Studies prior to the commencement of works.*

*Our Crane drivers (Operators) and riggers are highly trained and skilled within their fields, with all current and up-to-date training and VOC's.*

*Advanced Cranes is also maintaining an effective and ongoing accident prevention program aimed at safeguarding employees and contractors from accidents and implementing all policies. All policies are developed in consultation with employees and the Health and Safety Committee.*



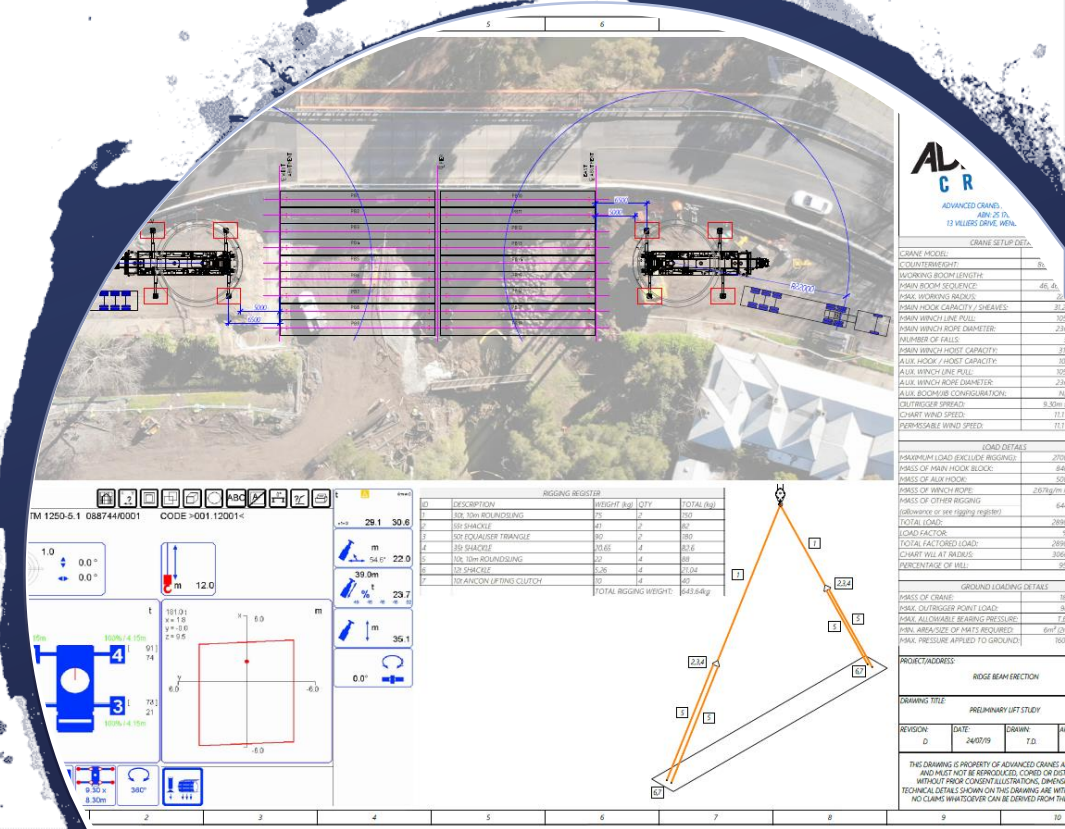
# Lift Engineering

At Advanced Cranes we use the latest technology available to plan our lifts and reach our full potential. With a high focus on safety and efficiency. Our comprehensive lift planning will ensure our valued clients receives the safest and most cost-effective outcome possible for each lift.

Utilising Liebherr's Liccon Work Planner, we can plan out every aspect of a lift, from crane configuration to outrigger loadings and ground bearing pressures.

Further, using AutoCad together with Nearmaps, our in-house Draftsmen complete detailed plans and elevations from every angle, helping both the client as well as our operators to completely visualize a lift before conducting it on site.

We are your lifting specialist capable of planning the most stringent of lifts. No lift is too big or too small!



# Industries and Services

- Infrastructure
- Telecommunications
- Building, Construction and General Lifting
- Rail
- Panel Installation
- Steel Rigging and Erection
- Building and Site Modules
- Wind Farm
- General Crane Hire
- Transport and Heavy Haulage
- Engineered Lift Studies
- Riggers / Dogmen
- Project Management & Support
- Man Box Secondary winch as per work safe standards





## ***Some of Our Projects***

[www.advancedcranes.com.au](http://www.advancedcranes.com.au)



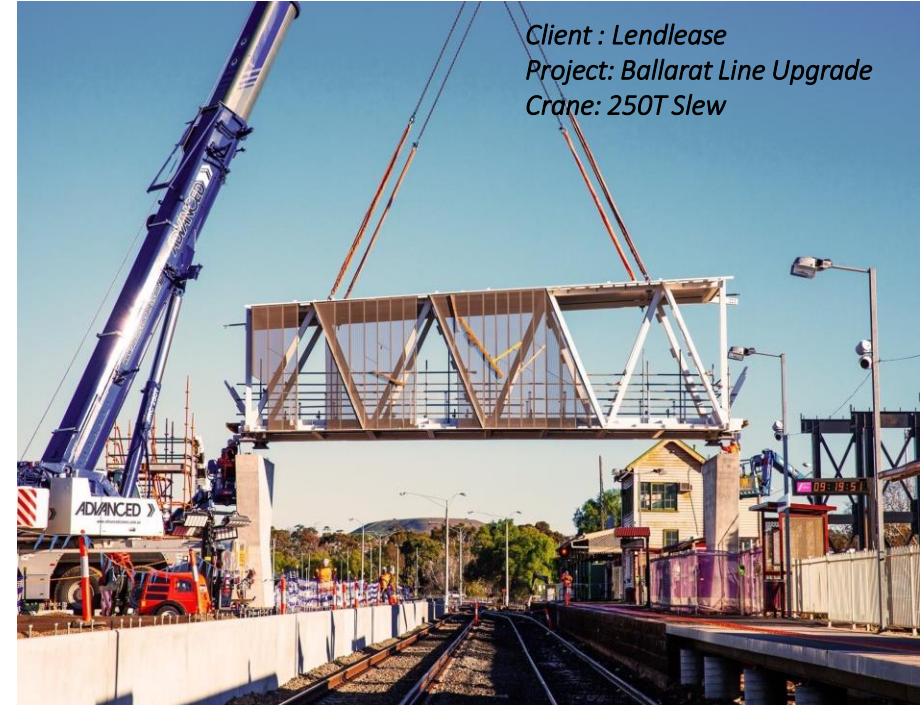
Client: Brunton Engineering & Construction  
Project: North East Line Upgrade  
Crane: 250T Slew



Client : Mc Connell Dowell  
Project: Echuca- Moama Bridge  
Crane: 450T Slew



Client : Lendlease  
Project: Ballarat Line Upgrade  
Crane: 250T Slew



Client: Modscape  
Project: Huntingdale Primary School Upgrade  
Crane: 250T Slew

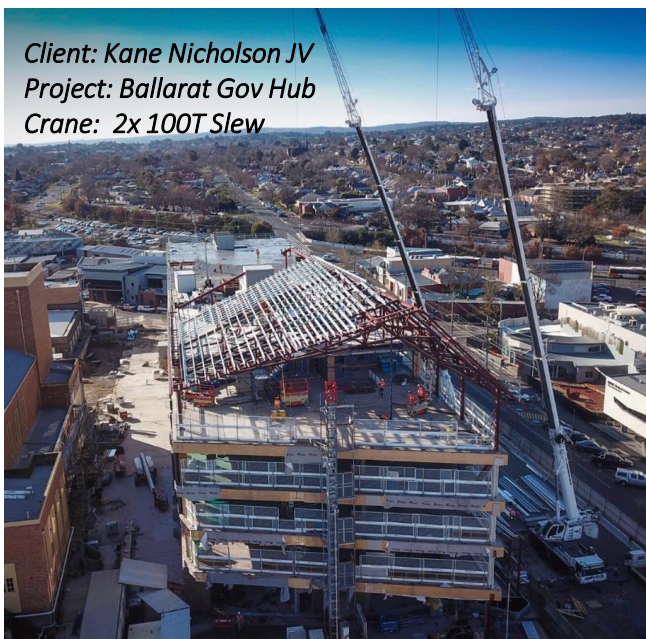


Client : Vestas  
Project : Berrybank Windfarm  
Crane: 250T Slew



Client: Vision Stream  
Project: Tower Installation  
Crane: 160T Slew

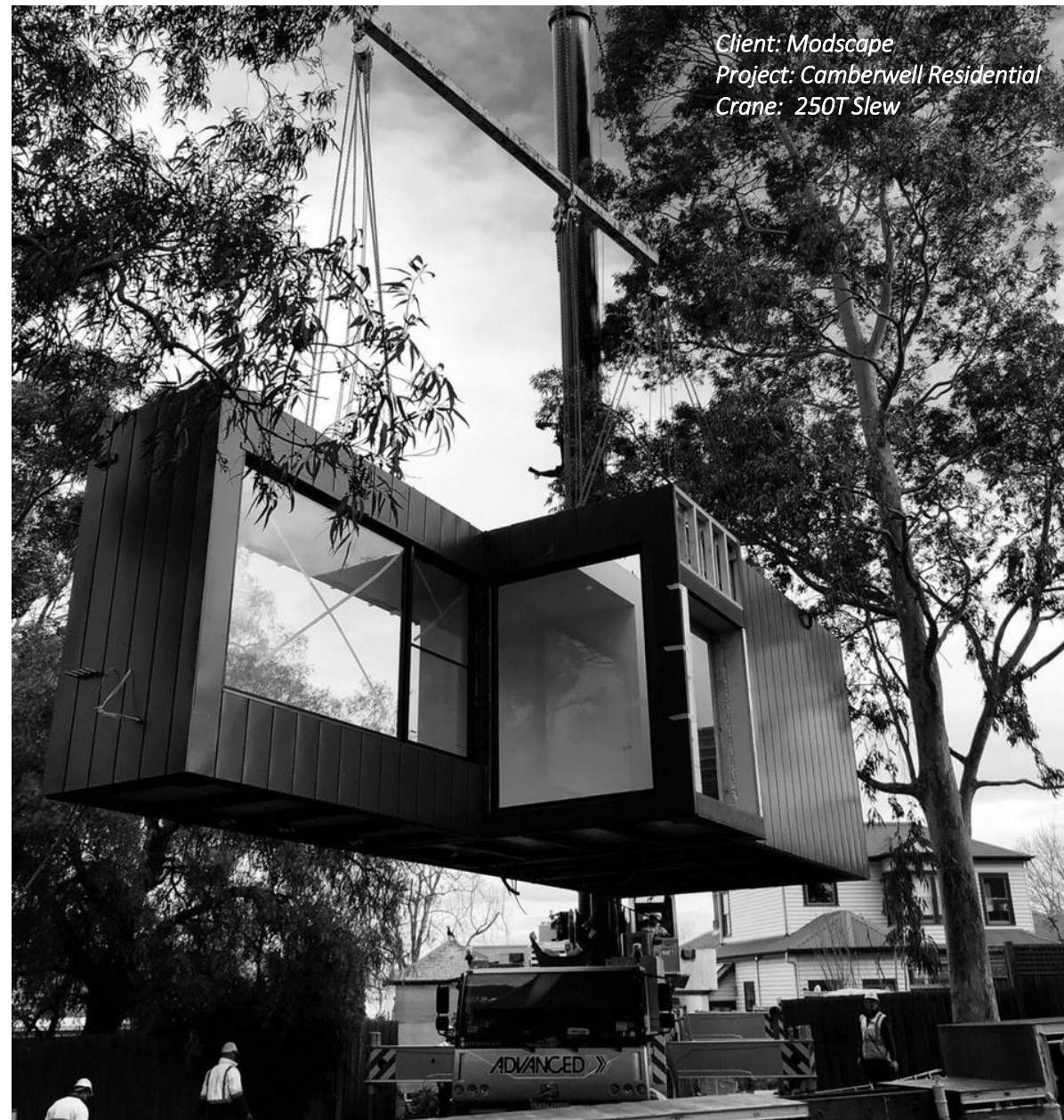




Client: Millennium Rigging  
Project: Truganina Data Centre  
Crane: 450T Slew



Client: Modscape  
Project: Camberwell Residential  
Crane: 250T Slew



# Clients and Partners



# Client Testimonials

## MODSCAPE.

*Advanced Cranes and Rigging have worked with Modscape over the past 3 years across a wide variety of projects in Victoria.  
I have always found Advanced Cranes to be very reliable, professional and technically proficient in all matters relating to our buildings and crane lifts.  
I would highly recommend Advanced Cranes to anyone.*

Robert Barker  
Construction Manager



Thank you for your commitment over the last few years (coming up 10). The level of Commitment shown from Advanced team, all in administration and operators, in my opinion, has been of great benefit to an assortment of companies and projects in the renewable energy industry.

The can-do attitude shown from the first point of contact until completing the task at hand is and will continue to put Advanced on top of the contact/ preferred supplier list. The level of commitment to safety, compliance, and the want of membership across all those facets from all in your organisation is second to none. I have seen this on projects over the years listed below;

- Collgar Windfarm 2011
- Mount Mercer Windfarm 2012 - 2015
- Ararat Windfarm 2015-2017
- Salt Creek Windfarm 2017 - 2018
- Lal Lal Windfarm 2018- 2019
- Dundonnell Wind Farm 2019- 2020
- Murra Wurra Windfarm 2020

Rob Frazer  
Civil Construction Manager  
Zenviron

[www.advancedcranes.com.au](http://www.advancedcranes.com.au)



Phone : 03 4333 0065

Email: [Operations@advancedcranes.com.au](mailto:Operations@advancedcranes.com.au)

Web: [www.advancedcranes.com.au](http://www.advancedcranes.com.au)



Address: 13 Villiers Drive, Wendouree Vic 3355 ( Head Office)

5 Everaise Ct, Laverton North Vic 3021 ( Laverton Depot)

40 Rossmoyne Rd, Colac West Vic 3250 ( Colac Depot)