



## **BATKIN & DAMME** SMASH REPAIRS

HOME : ABOUT : SERVICES : TOWING : INSURANCE : **WORKSHOP** : GALLERY : CONTACT



### **Workshop**

Having the latest technology in techniques & equipment is important, especially in modern vehicles! That's why at Batkin & Damme we have invested in the best technology, to ensure that your vehicle is repaired to the highest possible standards within the shortest possible time frame.

**Batkin & Damme utilises the latest technology such as:**

#### **Computerised Measuring System**

- 2 x Car-O-Tronic Mk V including bench rack with 4WD clamp

#### **Jig/Measuring System**

- 3 x Jig/Measuring Systems
- Z Rack
- 2 x Car-O-Liner

#### **Spot Welder**

- 16000amp Wonder/Welder

#### **Watercooled Inverter Spot Welder**

- Car-O-Liner CR150

#### **MIG Brazing Welder & Alloy**

- Silicone bronze Duo Mig

#### **Baking Oven**

- 2 x Italian CMC including full paint mixing room

#### **Infra Red Drying**

- 3 x Mobile dryers

#### **Dent Remover**

- 2 x Maxi

#### **Hoists**

- Scissor lifts
- 2-post hoist

#### **Other Specialist Equipment**

- Paintless dent tools & lamp
- Plastic welding kit – all rod types

#### **Paint System**

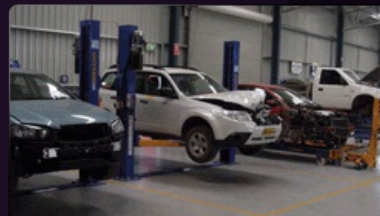
- PPG paints – Diamond Lifetime Warranty

#### **Towing/Recovery Vehicle**

- 2006 Mitsubishi 6-tonne tilt tray

#### **Plus**

Laptop connection to workshop – PC Anywhere  
Digital Imaging System



Internet broadband connection  
Computer Quoting – PPG  
Computerised Office System – PPG x5 terminals



Copyright Batkin & Damme Shash Repairs

site designed by jammedia