



# KITCHEN FITTINGS AND STORAGE SOLUTIONS

Innovation at its best



**SOLUTIONS  
SURE TO  
INSPIRE YOU!**

**Tall Cabinet Solutions**

Page

01-02

Convoy is a family of seriously stylish cabinets, guaranteed to become one of the favourite features of any home.

**Corner Cabinet Solutions**

Page

03

Like all of Häfele's exquisitely designed storage options, our corner solutions are easy to assemble, offering a silent flowing motion and stunningly good looks.

**Base Cabinet Solutions**

Page

04

Standard kitchen base units are more than 50cm deep. You need a fitting that moves stored items out in front of the cabinet to make intelligent use of the storage space.

**Overhead Cabinet Solutions**

Page

05

All Lift + Turn fittings from Häfele are easy to open, silent and smooth to operate, offer sophisticated design and allow the kitchen user to utilise high wall cupboard storage space.

**Drawer Systems & Accessories**

Page

06-07

Grass Nova Pro drawer systems - Where function and style come together. It won't just suit your kitchen, it will make it.

**Waste Management**

Page

08

Keep your kitchen looking clean and tidy with our collection of waste bins and waste sorting accessories. Our range of bins helps you keep on top of potential mess without any fuss.

**Appliances**

Page

09-10

With many features to suit any lifestyle, modern styling and the flexibility of many different options, you're sure to find the perfect Häfele appliance to suit your needs.

**Sinks and Taps**

Page

11

When it comes to outstanding design, nobody does it quite like Häfele. And the Squareline sinks and taps are just another example.



04

## Base Cabinet Solutions

When it comes to Clever Storage, Häfele really does have an answer for everything!



06

## Drawer Systems and Accessories

Individualise your kitchen storage, with a variety of products which offer flexible solutions to get the most out of your drawers.

Häfele brings the best of European kitchen fittings and accessories to you!

01

## Tall Cabinet Solutions

What ever the size or shape of your kitchen, Convooy redefines the way food is stored.



## Welcome to Häfele

Häfele represents a world of solutions spanning many countries and industries. As a global supplier of quality hardware to a dozen industries, Häfele is an innovator for everything from joining timber to moving walls.

As a creator of brilliant designs for decorative elements, or simply an established partner for every customer, Häfele doesn't just sell hardware, we find solutions.

Since Häfele began, we have been dedicated to bringing quality not only to our products, but to each customer relationship. Quality is the driving force guiding the efforts of our employees worldwide. As the company's reach has expanded around the world, Häfele strives to make these values universal. This is accomplished through the remarkable breadth of expertise that Häfele uses every day to help our customers.

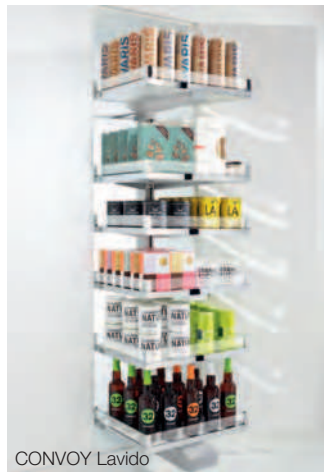
Established in 1982, Häfele Australia has been bringing you the latest innovations, sourced from either our own factories, or from our partners around the world, for over 30 years. With showrooms and design centres in all states across Australia, we are at your side Australia-wide and look forward to being of service to you for many years to come.

# CONVOY FAMILY.

It's what you don't see that makes it special



CONVOY Premio



CONVOY Lavido



CONVOY Centro

CONVOY is a family of seriously stylish cabinets, guaranteed to become one of the favourite features of any home.

CONVOY is built on the principle that there's a place for everything. The result is a bespoke, well-organised kitchen where everything is easy to find and retrieve.

At the centrepiece is the award-winning CONVOY Centro. Innovative in its appearance, CONVOY Centro is designed to work alongside your fridge, giving you enough room to store all your dry and fresh groceries in one modern and captivating system. But it's what you don't see that makes it really special.

CONVOY Centro does away with conventional frame structures, instead using a pioneering single-tube frame to position smooth floating trays that glide out effortlessly to reveal what's inside. No more double buying of items, no more missed use-by dates, no more money wasted. And with step-less height adjustment of the trays, you'll always be able to keep treats from prying hands.

Looking for added versatility? The CONVOY Lavido illustrates how flexible the entire CONVOY family can be. Sharing the same intelligent details as the Centro unit, CONVOY Lavido is compatible with any front panel, so it's ideal for all kind of layouts – even behind sliding doors.

Now, how about a solution to fit those luxuriously wide cabinets? Consider the CONVOY Premio. The embodiment of engineered luxury, you'll be spellbound by CONVOY Premio's ability to operate silently and automatically. Opening it is an adventure in itself!

"What ever the size or shape of your kitchen, Convoy redefines the way food is stored."







TANDEM Coffee Cabinet



TANDEM Depot

## TANDEM FAMILY.

### Smart storage solutions working in complete unison

The ingeniously designed TANDEM pantry unit and TANDEM coffee cabinet offer beautifully efficient solutions for storing supplies and much more.

Just opening the door will take your breath away. You see TANDEM uses intelligent pullout technology to draw forward the rear shelves, automatically bringing kitchen stock towards the user. Abundant storage space is even a feature of the door shelving!

What's more, an anti-slip base prevents contents from slipping or sliding, while an integrated soft close mechanism for cushioned closing avoids slamming of the door - creating silence and comfort in your kitchen.

TANDEM is crafted for 450, 500 and 600 mm cabinets, and as most customers can't get enough of this wonderful solution, it's possible to double the system in cabinet widths of 900, 1000 and 1200 mm as a TANDEM Depot – just as practical, twice as impressive.

Elsewhere, the TANDEM coffee cabinet is the ideal pairing for tall units with an integrated coffee machine, steamer or microwave.

“Surpass previously unattainable standards with space saving, functional and beautiful fittings from Häfele.”



TANDEM



# CORNER SOLUTIONS

Creating space with space



LeMans II

In today's home, real living requires clever thinking in how to best utilise the space you have. Everything must work hard.

Thanks to Kesseböhmer, brought to you by Häfele, even your corner units are the ultimate in form and function.

Take the LeMans II. This intelligent corner unit system is setting new standards with unprecedented levels of technical quality and motion that is designed to captivate. The only corner unit solution that combines very high space utilisation with outstanding access, LeMans II trays swing right out in front of the cabinet at an 85° opening angle. LeMans II combines optimal space utilisation for a clear overview and beautiful action. Users can store plenty of pots and pans (25kg capacity) – and each one is always within easy reach.

Want more? Take a look at the MAGIC CORNER, the smart solution that's capable of housing two complete cabinets next to each other in only one corner cabinet, or perhaps the REVO 90 – the innovative corner solution where front panels turn with a carousel-like rotation.

“Like all Häfele's exquisitely designed storage, our corner solutions are easy to assemble offering silently flowing motion and stunningly good looks.”



REVO 90



MAGIC CORNER

# BASE CABINET SOLUTIONS

## Small in size, great in value

Standard kitchen base units are more than 50cm deep. You need a fitting that moves stored items out in front of the cabinet to make intelligent use of this storage space.

Whether it's baking trays or cleaning agents, a mixer or a pressure cooker, Häfele's Base Cabinet Solutions allow you easy access to whatever you want.

How?

The base cabinet pull-out COMFORT with diverse shelves can be adjusted to suit different widths. Secondly, the DISPENSA Junior, a pull out unit that is ideal for all widths between 30 and 60cm, and any larder height – it's up to virtually any task!

The NO.15 is more than just a welcome filler. When placed by the oven, the NO.15 pull-outs are the convenient solution for spices, baking trays or the indispensable towel. The highest quality chrome lends even these smallest cabinets in the kitchen that special touch of elegance.

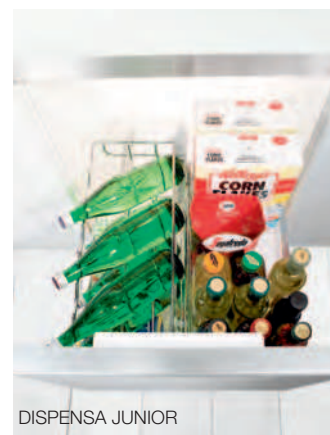
Lastly there's the PORTERO, a cleaning agent pull out that includes pull outs for sink units, cleaning utensil baskets, dustpan and hand-brush racks, hand-towels, laundry baskets and more.



PORTERO



COMFORT Pull Out



DISPENSA JUNIOR



NO.15 Pull Out

"When it comes to clever storage, Häfele really does have an answer for just about everything!"







SENS0



SENS0

# OVERHEAD CABINET SOLUTIONS

## Lifters, perfectly tuned in to contemporary kitchen design

Where cornices, light fittings or stacked wall units might interfere with lifting front panels, STRATO is the answer. STRATO lifts the front panel vertically, opening up new design prospects for kitchen planning. The minimal installation depth, and simple multidimensional adjustment are part of the convincing technical advantages of the STRATO. The system is also ideal for bathrooms and living areas. The choice is yours.

Ideal for medium-sized and large front panels – VERSO ensures optimal access to the stored contents. With a multiposition stop system for secure holding in any position.

The ideal solution for wall units in low-ceilinged rooms. SENSO, is simply smart – it folds up the split front panel on the way up, so as to take up a minimum of space. The integrated multiposition stop system holds the front securely in any intermediate position.

Other attractive features are the minimal installation depth, simple adjustment and the fact that SENSO fittings can be used for unit heights as high as 90 cm. Flexible SENSO fittings can handle both symmetrical and asymmetrical front panel splits. Kitchen designers and planners set a high value on all these features.

The Electronic versions, E-SENS0, E-VERSO and E-STRATO add the user-friendly, extra convenience of push button control opening and closing.



VERSO



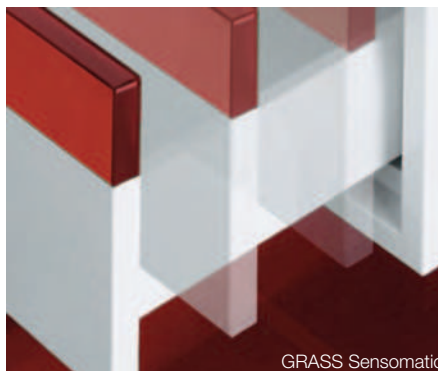
STRATO

“All the Lift + Turn Overhead fittings from Häfele are easy to open, silent and smooth to operate, offer sophisticated design and allow the kitchen user to utilise high wall cupboard storage space.”





GRASS Nova Pro



GRASS Sensomatic

"GRASS drawer systems - where function and style come together. It won't just suit your kitchen, it will make it!"

## GRASS Drawer Systems

### Individualise your kitchen storage

The GRASS Nova Pro drawer system from Häfele offers more features and options than any other drawer in the market. This includes the world's only "Intelligent" drawer system – Sensotronic, and the electro-mechanical drawer system – Sensomatic. Häfele is also the Australian distributor of the Dynapro drawer system for timber drawer boxes, which has now expanded to include 40kg and 60kg Full Extension Airmatic Runners, and also features 40kg - 60kg Tipmatic Plus – (Push to Open) variations.

The GRASS Nova Pro Drawer range offers a variety of accessories to create more organisation within your kitchen drawers. Side railings create deeper drawers for pots and pans, while the drawer dividers separate the drawer into different compartments. Whether you are storing cutlery, crockery or dried goods in your kitchen drawers, the Nova Pro range of drawers and accessories will create an attractive and convenient solution.



GRASS Nova Pro



GRASS Nova Pro - Crystal

Cusio Cutlery Insert

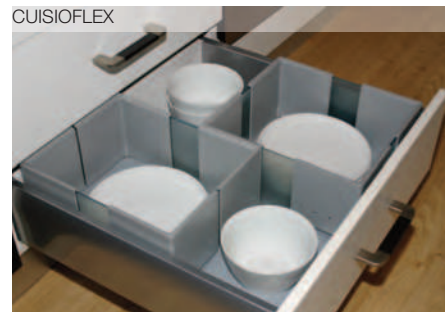


# Drawer Inserts and Accessories

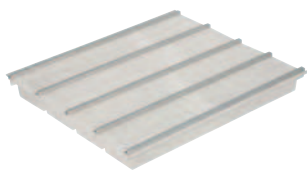
## Individualise your drawer system

Häfele offers a variety of flexible accessories to help you customise your drawer system. Perfect for organising plates, dishes, pots, pans and cutlery, Häfele's drawer inserts and accessories are suited for use in all popular drawer sizes and styles. Spice containers, cutlery inserts, internal drawer fronts, side elements and hanging waste bins, are just some of solutions on offer.

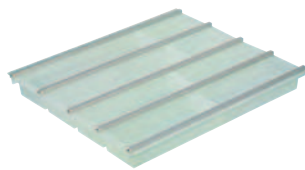
CUISIOFLEX



“A variety of products offer flexible solutions to get the most from your drawers.”



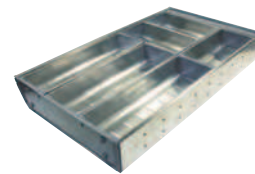
White translucent  
CUISIO Cutlery Insert



Green translucent  
CUISIO Cutlery Insert



Graphite translucent  
CUISIO Cutlery Insert



Stainless Steel  
Cutlery insert

Euro-Cargo 60



Euro-Cargo 45

## Pull Out Waste Bins

Keep on top of potential mess without any fuss

Keep your kitchen looking nice and tidy with our collection of waste bins and waste sorting accessories. Our range of bins helps you keep on top of potential mess without any fuss, so that your kitchen will always look its best. You can choose our simple, free-standing bins to deal with all sorts of household waste and recyclable materials. Or check out our multiple container ranges that feature up to seven different compartments to sort your waste thoroughly. All helping you to live a sustainable life at home. It's a win-win solution.



One2Five



One2Five

“What comes in, must go out. Kitchen waste management is a very important element in your kitchen. Häfele has a solution to suit your waste management needs.”





Touch Control Oven



Double Wall Oven

# HÄFELE APPLIANCES

## A Smart choice for all kitchens

When developing new products, convenient solutions are always sought to simplify household tasks and leave the users more free time to spend on the important things in life.

Advanced technology and innovative features combine to bring you Häfele's sophisticated range of appliances. Designed around the end-user, our appliances provide complete peace of mind. From ease of use, modern electronic interfaces, elegant and unique style, we strive to bring intelligent solutions into any home that can make a difference to a busy lifestyle.

Blending the very latest in technology with bold & innovative design, our stainless steel range is simply beautiful and will complement the most contemporary kitchen design.

The sleek, modern design of our integrated fridge incorporates useful solutions to create the perfect storage space for all your fresh food. With the flexibility of it being incorporated into the kitchen design, the integrated fridge/freezer combination features electronic controls, with the freezer on the bottom to allow easy access for the everyday use of the fridge.



Integrated Fridge



60cm Built in  
Wine Fridge



Integrated Dishwasher

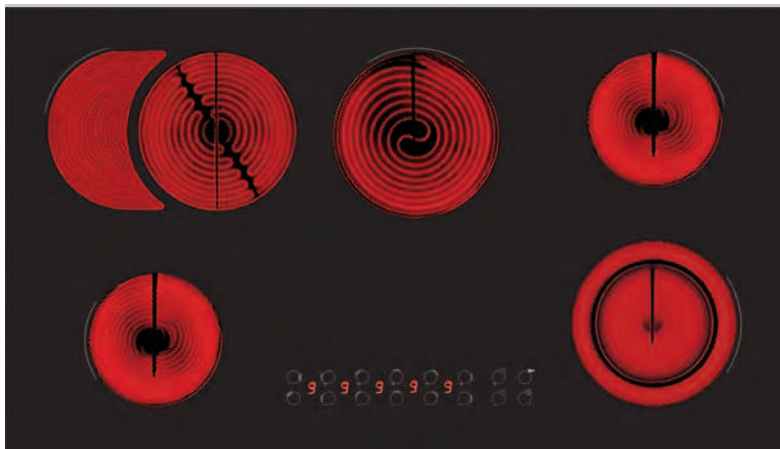


Impressionist 90cm  
Wall Mounted Glass Rangehood



Impressionist 80cm  
Wall Mounted Glass Rangehood

“With many features to suit any lifestyle, modern styling and flexibility of different options, you’re sure to find the perfect Häfele appliance.”



90cm Vitro Electric Ceramic Cook Top



60cm Gas Cook Top



Single bowl sink with drainer



1 1/2 Bowl sink



Double bowl sink



Single bowl sink



Mixer tap - Gooseneck



Mixer tap - Squareline

# HÄFELE SQUARELINE SINKS

## Elegantly designed, made for living

When it comes to outstanding functionality and elegant design, nobody does it quite like Häfele. And the Squareline sink is no exception. Superbly crafted from high-quality 304, 18/8 stainless steel, and at 1.2mm thick, it's the perfect choice for anyone wanting to complement their kitchen, laundry or outdoor living space with the most considered touch.

All edges are laser-welded for smooth clean lines and each sink in the range comes with basket strainers that link directly to the overflow assembly. It will never overflow even if the tap is left running. The range of tapware available to suit the Häfele Squareline sinks, make these an admirable and elegant solution for any kitchen.

The Squareline sink range can be easily installed in three ways:

- Undermount – increases bench space and is ideal for granite, stone or composite materials.
- Integrated – sits flush with the bench top for the ultimate in clean lines.
- Lay on – sits on top of the bench space and is ideal for laminate materials.



## FOR MORE INFORMATION

On anything you've seen in this brochure and much, much more. Simply complete this request form and return via pre paid post to:

Häfele Australia Pty Ltd  
PO Box 1066, Dandenong VIC 3175

or visit [www.hafele.com.au/info](http://www.hafele.com.au/info)

Let's face it, most of us have the opportunity to build a home or complete a renovation only once or twice in our lifetime. Some build a 'mood' board, some look to TV for style to steal; others raid the magazine rack for ideas. But to truly design and build the home of your dreams, you need one true source of inspiration and that's where you turn to Häfele.

The new Häfele consumer website is where you'll discover everything you need to create the spaces you'll love over a lifetime. With Häfele, it's all about giving you the control. You'll access a comprehensive range of functional fittings that are displayed how they're meant to be in real-life installations for real-life living.

Häfele can also help you find a supplier or an installer near you. Simply search the 'Functionality Partner' database to find a Häfele partner qualified in the installation and supply of Häfele hardware and fittings.

So for coveted creative solutions visit [www.hafele.com.au](http://www.hafele.com.au) and be inspired like never before.



### Information Request Form

Name:

Address:

Contact Ph:

Email Address:

### I would like more information on:

- |   |   |
|---|---|
| <input type="checkbox"/> Tall Cabinet Solutions       | <input type="checkbox"/> Corner Cabinet Solutions   |
| <input type="checkbox"/> Base Cabinet Solutions       | <input type="checkbox"/> Overhead Cabinet Solutions |
| <input type="checkbox"/> Drawer Systems & Accessories | <input type="checkbox"/> Waste Management           |
| <input type="checkbox"/> Sinks & Taps                 |   |

# H'AFELE

732.04.589 - 04.13

info@hafele.com.au • 1300 659 728

**www.hafele.com.au**



**Delivery Address:**

PO Box 1066

DANDENONG VIC 3175

No stamp required  
if posted in Australia



Hafele Australia Pty Ltd

Reply Paid 1066

DANDENONG VIC 3175