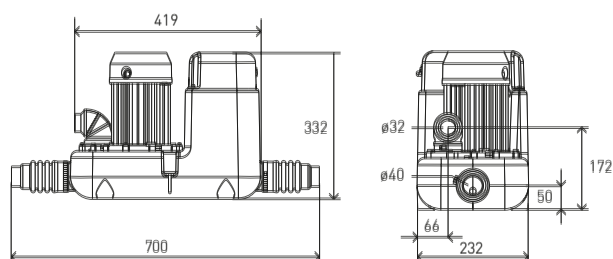
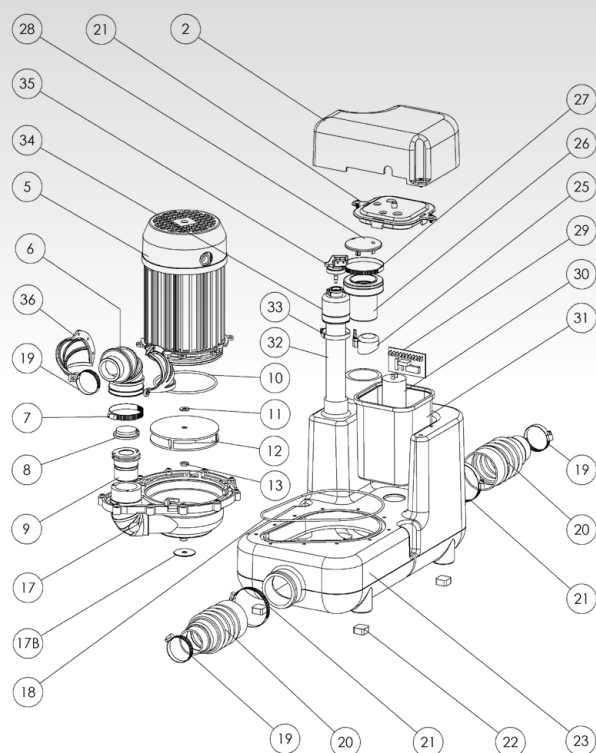
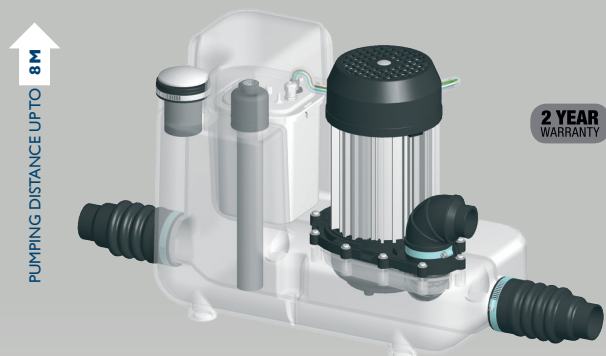


SANICOM

SA 102

Resistant to high temperatures, SANICOM can be used to lift waste from demanding commercial kitchens, laundries and bars.



POSSIBLE CONNECTIONS

Multiple sinks, coffee stations, commercial kitchens, dishwashers, glasswashers, washing machines, bath, shower

VERTICAL PUMPING HEIGHT

Up to 8m

HORIZONTAL PUMPING DISTANCE

Up to 100m

RECOMMENDED DISCHARGE PIPE DIAMETER

25mm uPVC Pressure Pipe

NORMAL OPERATING TEMPERATURE

35°C and max 90°C for short periods

ELECTRICAL POWER SUPPLY

220-240V / 50Hz

MOTOR POWER RATING

800W

OVERALL MEASUREMENTS (W x H x D)

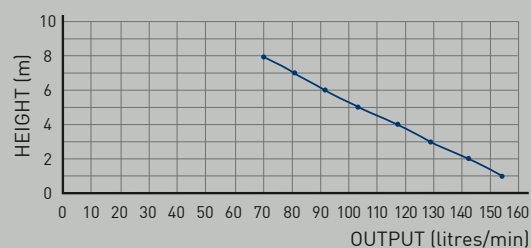
490 x 330 x 230mm

ACCESSORIES

- Factory pre mounted non return valve (supplied)
- Possibility of fitting an external alarm (Isolation valve not supplied)

All horizontal pipework requires a minimum of 1:100 fall

FLOW RATE PERFORMANCE



PUMPING DISTANCE PERFORMANCE

Increase size of horizontal run by one pipe size after 5m

