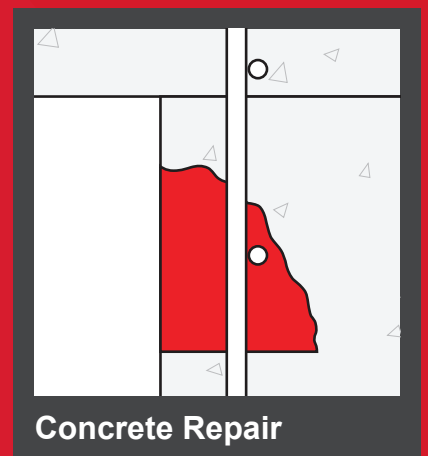




*constructive solutions*

# CONCRETE REPAIR SOLUTIONS

**RENDEROC<sup>®</sup>, GUNCRETE<sup>®</sup>, PATCHROC<sup>®</sup> & PAVEROC<sup>®</sup>**





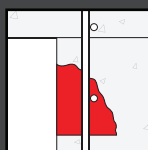
## About Fosroc and Parchem

**Fosroc is a world leader in construction solutions. Since the company's beginnings over 80 years ago, Fosroc has developed into an international leader in delivering construction solutions for virtually any building or infrastructure project. New or old construction, above or below ground, we combine high quality products, expert technical support, customer service and innovation to give you the best solution for your project.**

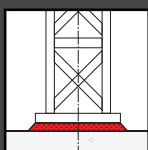
We provide construction solutions for; new and old concrete repair, grouts and anchors, waterproofing, joint fillers and sealants, industrial flooring, protective coatings, surface treatments, concrete admixtures and grinding aids.

Fosroc has an extensive network of offices and manufacturing locations across Europe, the Middle East, India and Asia, and is further represented in other regions across the world by distributor and licensee partners.

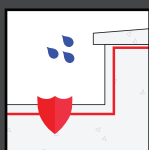
Parchem Construction Supplies, part of DuluxGroup, is the licensed manufacturer and distributor of Fosroc, Vector, Vandex and EdenCrete products in Australia, and Concrete Plus is the licensed distributor in New Zealand.



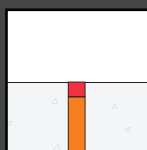
Concrete Repair



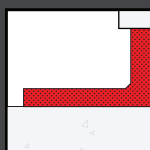
Grouts & Anchors



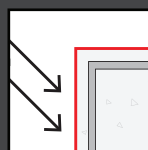
Waterproofing



Joint Fillers & Sealants



Industrial Flooring



Protective Coatings



Surface Treatment



Concrete Admixtures & Grinding Aids

# Fosroc Concrete Repair Solutions

We believe at Fosroc that concrete should be built to last – our high quality protective systems and repair materials can significantly prolong the life of a structure beyond its original design life. With our wide range of repair, strengthening

and protection systems – including our market leading, high performance Renderoc range – we're able to select the product best suited to your needs in terms of both usability and technical properties.



## The Fosroc Concrete Repair Range

The following products in the Renderoc repair mortars range have:

- **Shrinkage compensation:** To ensure long term dimensional stability,
- **Low permeability:** To give excellent resistance to water, carbon dioxide and chlorides.

**Renderoc HB25:** High build repair mortar.

**Renderoc HB40:** High build repair mortar, conforms to EN1504-3 class R3.

**Renderoc HB40 Plus:** Extra high build, high resistivity repair mortar, conforms to EN1504-3 class R3.

**Renderoc HB70:** High build repair mortar, conforms to EN1504-3 class R4.

**Renderoc HB70 Plus:** Extra high build, high resistivity repair mortar, conforms to EN1504-3 class R4.

**Renderoc LA55:** High build free flowing micro concrete, conforms to EN1504-3 class R4.

**Renderoc LA55 Plus:** Extra high build, high resistivity, free flowing micro concrete, conforms to EN1504-3 class R4.

**Renderoc LA55 Rapid:** Fast setting, high build, free flowing micro-concrete.

Fosroc also offers the following concrete repair products, including mortars for specialised applications:

**Renderoc HB:** The 'original' Renderoc, general purpose, high build repair mortar for small repairs.

**Renderoc FC:** Fairing coat to cover surface imperfections.

**Renderoc G:** Geopolymer repair mortar for highly corrosive environments.

**Renderoc CAC:** Calcium aluminate mortar with superior biogenic corrosion resistance.

**Guncrete E:** Low rebound dry-spray applied repair mortar.

**Patchroc GP:** Floor and pavement, fast setting patch repair mortar.

**Patchroc C:** Floor and pavement, fast setting patch repair mortar.

**Paveroc:** Floor and pavement large area repair.

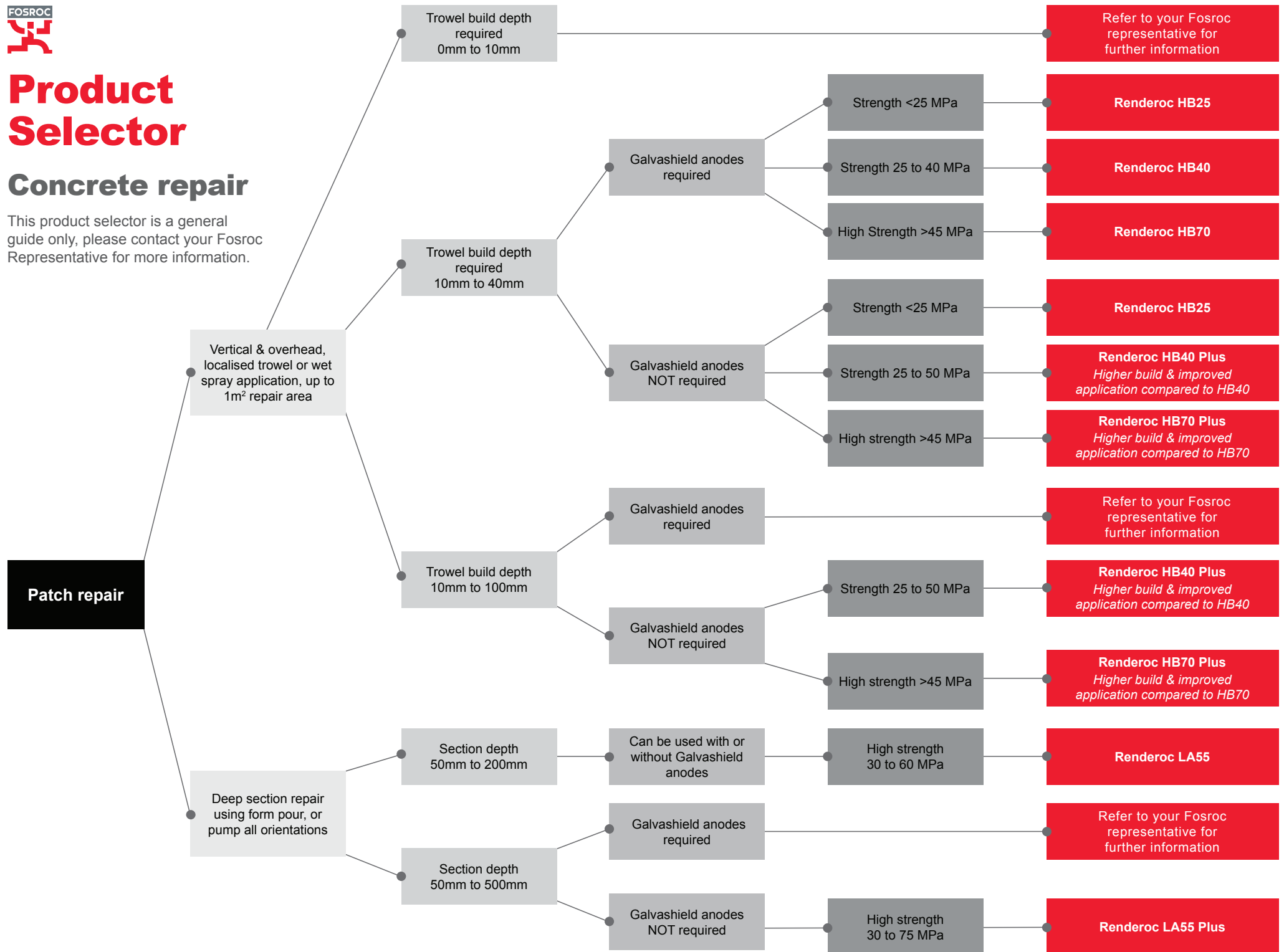
**Renderoc Rapid:** Fast setting repair mortar for horizontal surfaces, trafficable within 2 hours.

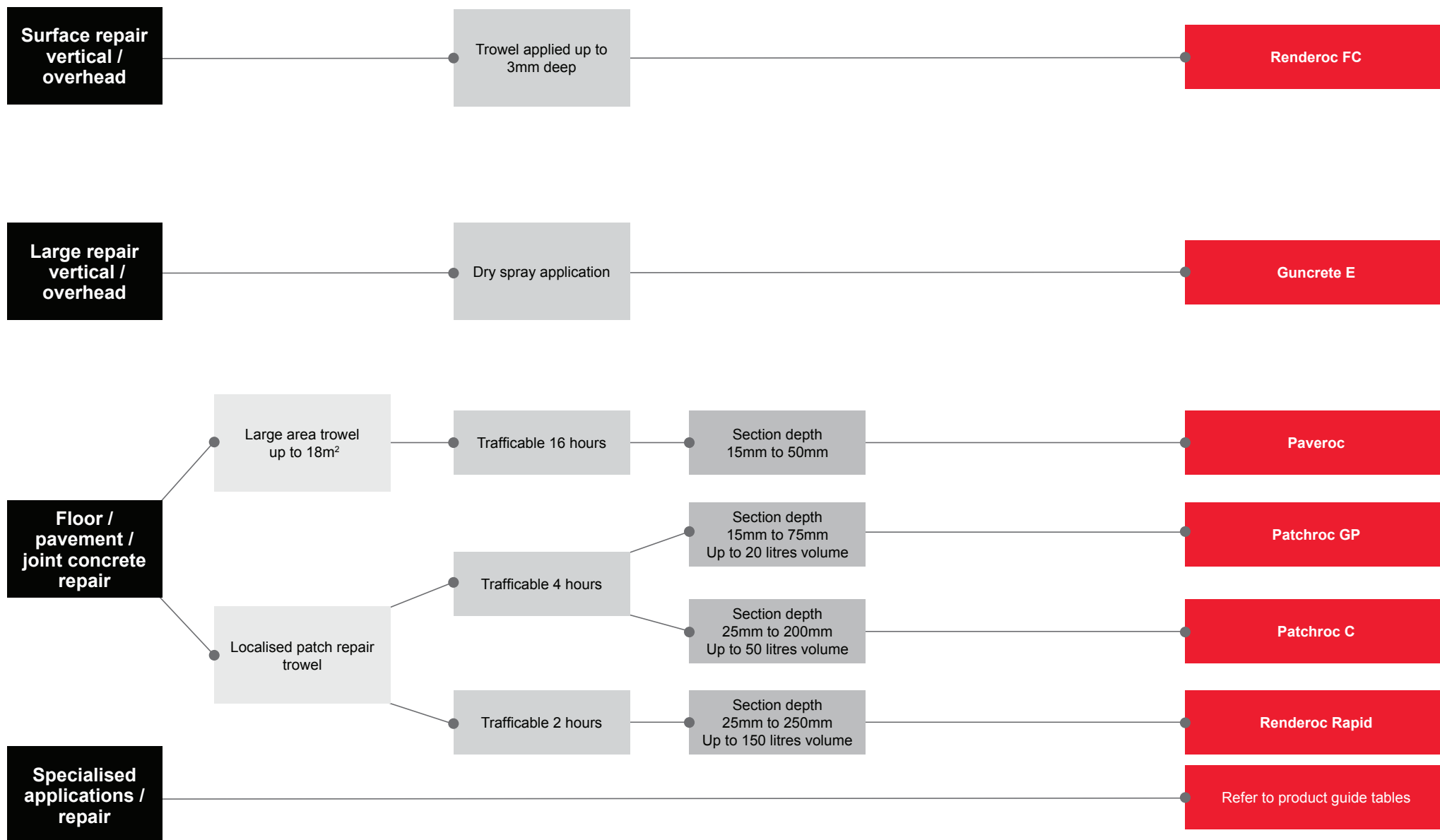


# Product Selector

## Concrete repair

This product selector is a general guide only, please contact your Fosroc Representative for more information.





For galvanic repairs, choose from our range of Vector®, Galvashield® or Galavnode® corrosion protection technologies that have been tested and proven for use with the Fosroc Renderoc range. Parchem are the licensed distributor of Vector Corrosion Technologies products in Australia, and, Concrete Plus is the licensed distributor in New Zealand.





# Product Guide



Concrete repairs							
	Renderoc HB25	Renderoc HB40	Renderoc HB40 Plus (Previously HB50)	Renderoc HB70	Renderoc HB70 Plus	Renderoc LA55	Renderoc LA55 Plus
<b>Product description</b>	High build repair mortar, suitable for use with embedded galvanic anodes.	High build repair mortar, suitable for use with embedded galvanic anodes. Meets the requirements of EN1504-3 Class R3.	Extra high build, high resistivity repair mortar. Meets the requirements of EN1504-3 Class R3.	High build repair mortar, suitable for use with embedded galvanic anodes. Meets the requirements of EN1504-3 Class R4.	Extra high build, high resistivity repair mortar. Meets the requirements of EN1504-3 Class R4.	High build, free flowing micro-concrete repair mortar, suitable for use with embedded galvanic anodes. Meets the requirements of EN1504-3 Class R4.	Extra high build, high resistivity, free flowing micro-repair mortar. Meets the requirements of EN1504-3 Class R4.
Used for:	Vertical / Overhead	Vertical / Overhead	Vertical / Overhead	Vertical / Overhead	Vertical / Overhead	All Orientations	All Orientations
<b>Primary repair type</b>	Localised patching of reinforced concrete up to 25 MPa.	Localised patching of reinforced concrete up to 35 MPa.	Localised patching of reinforced concrete up to 45 MPa. <b>Ideal for new construction defect repairs.</b>	Localised patching of reinforced concrete >45 MPa.	Localised patching of reinforced concrete >45 MPa. <b>Ideal for new construction defect repairs.</b>	Thick section concrete repair where form and pour method is preferred, 30 to 60 MPa.	Large volume, high strength concrete repair where form and pour method is preferred, 30 to 75 MPa.
<b>Galvanic or non-galvanic repair?</b>	Galvanic or non-galvanic	Galvanic or non-galvanic	Non-galvanic	Galvanic or non-galvanic	Non-galvanic	Galvanic or non-galvanic	Non-galvanic
<b>Suitable for use with Galvashield anodes?</b>	Yes	Yes	No	Yes	No	Yes	No
<b>28 day strength</b>	23 MPa	35 MPa	50 MPa	70 MPa	60 MPa (56 days strength of 70 MPa)	60 MPa	60 MPa (56 days strength of 75 MPa)
<b>Compatible host concrete strength</b>	15 to 30 MPa	30 to 45 MPa	25 to 50 MPa	>45 MPa	>45 MPa	30 to 60 MPa	30 to 70 MPa
<b>Application</b>	Trowel, wet spray	Trowel, wet spray	Trowel, wet spray	Trowel, wet spray	Trowel, wet spray	Form and pour, pump	Form and pour, pump
<b>Trowel build / depth</b>	10mm to 80mm vertical	10mm to 40mm vertical	10mm to 100mm vertical	5mm to 40mm vertical	5mm to 100mm vertical	50mm to 200mm thick	50mm to 500mm thick
<b>Certifications / conforms to</b>	N/A	AS4020 – Potable water EN1504-3 class R3	RMS B80 EN1504-3 class R3	AS4020 – Potable water EN1504-3 class R4	RMS B80 EN1504-3 class R4	AS4020 Potable water EN1504-3 class R4	RMS B80 EN1504-3 class R4
<b>Yield*</b>	12.5L/15kg	12.9L/20kg	12.1L/20kg	10.2L/20kg	11.5L/20kg	10L/20kg	9.7L/20kg
<b>Bags per m<sup>3</sup></b>	80	80	83	98	87	100	103
<b>Size</b>	15kg	20kg	20kg	20kg	20kg	20kg	20kg
<b>Product code</b>	FC387080-15KG	FC302020-20KG	FC302023-20KG	FC303030-20KG	FC303035-20KG	FC302030-20KG	FC300744-20KG

**Always refer to the product TDS before making your final selection or speak to your Fosroc representative.**

\* Note: yield is an estimate only, actual yield will depend on consistency of the mix, application technique and condition of the substrate, no allowance has been made for wastage.

Concrete Repairs		
	Renderoc FC	Renderoc HB
<b>Product description</b>	Polymer modified fairing mortar to cover surface imperfections. Designed for application in thin layers to produce a fair-faced appearance to concrete surfaces or masonry surfaces in readiness for a protective coating.	The original "Renderoc" – general purpose, high build patch repair mortar for small areas.
Used for:	Vertical / Overhead	Vertical / Overhead
<b>Primary repair type</b>	Fairing coat to cover surface imperfections up to 3mm deep in new concrete and blockwork, eg. blow holes, honeycombing and voids.	Small area localised patching of reinforced concrete.
<b>Galvanic or non-galvanic repair?</b>	N/A	Non-galvanic
<b>Suitable for use with Galvashield anodes?</b>	N/A	No
<b>28 day strength</b>	N/A	28 MPa
<b>Compatible host concrete strength</b>	N/A	up to 25 MPa
<b>Application methods</b>	Trowel	Trowel, wet spray
<b>Trowel build / depth</b>	up to 3mm	10mm to 80mm vertical
<b>Certifications / conforms to</b>	N/A	N/A
<b>Yield*</b>	9L/15kg	12.5L/15kg
<b>Bags per m<sup>3</sup></b>	111	80
<b>Size</b>	15kg	15kg
<b>Product code</b>	FC302000-15KG	FC306095-15KG

Large Concrete Repair	
	Guncrete E
<b>Product description</b>	High build, low rebound dry-spray applied repair mortar. Meets the requirements of EN1504-3 Class R4.
Used for:	Vertical / Overhead
<b>Primary repair type</b>	Dry spray applied repair mortar.
<b>Galvanic or non-galvanic repair?</b>	Galvanic or non-galvanic
<b>Suitable for use with Galvashield anodes?</b>	Yes
<b>28 day strength</b>	84 MPa
<b>Compatible host concrete strength</b>	N/A
<b>Application methods</b>	Dry spray
<b>Trowel build / depth</b>	min. 10mm
<b>Certifications / conforms to</b>	EN1504-3 class R4
<b>Yield*</b>	10L/20kg
<b>Bags per m<sup>3</sup></b>	100
<b>Size</b>	20kg
<b>Product code</b>	FC302060-20KG

*Always refer to the product TDS before making your final selection or speak to your Fosroc representative.*

*\* Note: yield is an estimate only, actual yield will depend on consistency of the mix, application technique and condition of the substrate, no allowance has been made for wastage.*

## Floor / Pavement / Joint Concrete Repair

	Patchroc GP	Patchroc C	Paveroc	Renderoc Rapid
<b>Product description</b>	Floor & pavement, fast setting patch repair mortar for use where interruption to traffic must be minimised, trafficable within 4 hours.	Floor & pavement, fast setting patch repair mortar for use where interruption to traffic must be minimised, trafficable within 4 hours.	Floor & pavement, fast setting, large area repair mortar, designed to minimise down-time, accepts pedestrian traffic within 16 hrs.	Fast setting, high build repair mortar for horizontal surfaces that require urgent reinstatement, trafficable within 2 hours.
<b>Used for:</b>	Horizontal	Horizontal	Horizontal	Horizontal
<b>Primary repair type</b>	For the emergency reinstatement of localised concrete pavements, airport aprons, access ramps, roadways, gangways and warehouse floors.	For the emergency reinstatement of localised concrete pavements, airport aprons, access ramps, roadways, gangways and warehouse floors.	For the reinstatement of large areas of concrete pavements and floors to avoid the total replacement of bays.	For emergency reinstatement of horizontal areas where reinstatement required urgently eg. bridge joint edges, roadway slabs.
<b>Galvanic or non-galvanic repair?</b>	Non-galvanic	Non-galvanic	Non-galvanic	Non-galvanic
<b>Suitable for use with Galvashield anodes?</b>	No	No	No	No
<b>28 day strength</b>	55 to 67 MPa (depending on consistency of mix)	50 to 60 MPa (depending on consistency of mix)	55 MPa	55 MPa
<b>Application methods</b>	Trowel	Trowel	Trowel	Trowel, pour
<b>Trowel build / depth</b>	15mm to 75mm deep	25mm to 200mm deep	15mm to 50mm deep	25mm to 250mm deep
<b>Certifications / conforms to</b>	N/A	N/A	N/A	N/A
<b>Yield*</b>	10L/20kg	9.6L/20kg	9.4L/20kg	10.2L/20kg
<b>Bags per m<sup>3</sup></b>	100	105	107	98
<b>Size</b>	20kg	20kg	20kg	20kg
<b>Product code</b>	FC342070-20KG	FC342060-20KG	FC302080-20KG	FC300200-20KG

*Always refer to the product TDS before making your final selection or speak to your Fosroc representative.*

*\* Note: yield is an estimate only, actual yield will depend on consistency of the mix, application technique and condition of the substrate, no allowance has been made for wastage.*



## Specialised Concrete Repairs



	Renderoc G	Renderoc CAC
<b>Product description</b>	Geopolymer repair mortar and lining system for use in highly corrosive environments, with high chemical and acid resistance.	High performance calcium aluminate mortar with superior biogenic corrosion resistance. Fully compatible with the moist environment found in sewers.
<b>Used for:</b>	All Orientations	All Orientations
<b>Primary repair type</b>	Repairs in highly corrosive environments and concrete eroded from "soft water" degradation, eg. acid bunds or in sugar, dairy and wine processing industries.	Biogenic corrosion resistance, old or new sewer & sewage structures.
<b>Galvanic or non-galvanic repair?</b>	Non-galvanic	Non-galvanic
<b>Suitable for use with Galvashield anodes?</b>	No	No
<b>28 day strength</b>	35 MPa	>70 MPa
<b>Application methods</b>	Trowel, wet or dry spray	Trowel, wet or dry spray
<b>Trowel build / depth</b>	Up to 80mm	Min. 25mm
<b>Certifications / conforms to</b>	AS4020 Potable water	N/A
<b>Yield*</b>	10.2L/20kg	10.3L/20kg Wet spray 9.8L/20kg Dry spray
<b>Bags per m<sup>3</sup></b>	98	97 Wet spray 102 Dry spray
<b>Size</b>	20kg	20kg
<b>Product code</b>	FC302025-20KG	FC306062-20KG Wet spray FC306063-20KG Dry spray (2.5mm) FC306061-20KG Dry spray (4mm MTO)



***All over the world you'll find Fosroc repair mortars still performing decades after application.***

***They're hard at work in many structures including those in the most challenging of environments.***

**Always refer to the product TDS before making your final selection or speak to your Fosroc representative.**

\* Note: yield is an estimate only, actual yield will depend on consistency of the mix, application technique and condition of the substrate, no allowance has been made for wastage.



*constructive solutions*

## **World leaders in construction solutions**

Fosroc is a world leader in the delivery of virtually any type of construction project, combining high quality products, expert technical support, customer service and innovation.

**AU 1300 737 787** [parchem.com.au](http://parchem.com.au)

**NZ 0800 657 156** [concreteplus.co.nz](http://concreteplus.co.nz)

**Parchem Construction Supplies Pty Ltd** 7 Lucca Road, Wyong NSW AUS 2259  
**Concrete Plus Ltd** 23 Watts Road, Sockburn NZ 8042

Fosroc, Guncrete, Patchroc, Paveroc and the Fosroc logo are the trade marks of Fosroc International Limited, used under licence. Galvashield, Galavanode, Vector, Vandex and Edconcrete are trade marks, used under licence.