

ABOUT US

CORE BUSINESS ACTIVITIES

OUR TRUSTED PARTNERS

HAD AN ACCIDENT?

CONTACT US

## > TRUCK & TRAILER REPAIRS

- Specialising in commercial and fleet repairs
- Baked enamel refinishing
- Over 45 years experience in the repair industry.
- Reputation for quality and reliability
- Leading edge equipment and state of the art facilities
- Skilled and specialised trades people
- Quality products and lifetime guarantee
- Car-O-Liner® and 'Josam' chassis alignment equipment



## > CHASSIS & TRAILER STRAIGHTENING

We use the 'Josam' floor rack system for straightening your truck or trailer with exceptional results having been achieved using this equipment. This system allows for more accurate straightening, with less strip down time, saving you time and money in the repair.

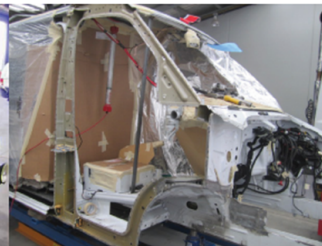
We laser align your vehicle before, during and after repair to ensure the correct specifications are achieved.



## > MECHANICAL REPAIRS

In this era of computers and specialisation, it makes sense to have trained technicians from the respective vehicle manufacturers diagnose and work on vehicles when required.

We provide the facilities for their specialists to come in and perform what needs to be done.



## > PAINT & BODYWORK

We have two spray booth ovens on site, with our large oven capable of accommodating a B Double. We use the Glasurit computer colour matching service to assist us to match your colours perfectly.

To ensure you get the best results, our team of qualified panel beaters and spray painters regularly attend training to keep up to date with the latest industry innovations.



## > ASSEMBLY

The final assembly is the coming together of all the facets of Modern Truck and Trailer Repairs.

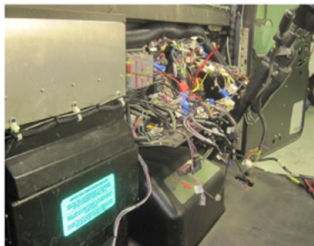
Our quality control system requires sign off by the assembler at every stage of the repair process. Finally, before hand over, all steps are checked by management to confirm your vehicle conforms to our exacting standards.



## > AUTO ELECTRICAL

Modern Truck & Trailer Repairs have a full electrical service in house.

There aren't many repairs that we do that don't have an electrical component attached to them, and having the in house service makes the job more efficient, with less downtime allowing faster repairs.



## > TOWING & SALVAGE

Modern Towing and Salvage's fleet of late model heavy duty tow trucks, salvage units and tilt/slide trays are ready to assist 24 hours per day, 7 days per week. We cover most areas of Victoria and can handle most towing and recovery work with ease.

Why tow with someone who only offers towing?  
Tow with the fleet that offers the full recovery and repair service - Modern Towing & Salvage.

