

Visit www.valplast.com today!

- Join the Valplast® mailing list to receive product updates, company news and event info
- Connect with a Certified Valplast® Laboratory
- Watch demonstration videos on important Valplast® techniques
- Download Valplast® prescription forms
- Register new Valplast® appliances at www.valplast.com/register
- Follow Valplast® on Facebook, Twitter and YouTube



Become a fan
on Facebook



Follow @Valplast



Find Valplast on
YouTube

valplast
International Corp

ISO 9001:2008 & ISO 13485:2003 Certified

200 Shames Drive
Westbury, NY 11590

(516) 442-3923 (Phone)
(800) 843-2861 (Toll-Free)

info@valplast.com
www.valplast.com

© 2014 Valplast International Corporation. All Rights Reserved.

valplast



Offer Your Patients *The Valplast Smile*

In Today's Dentistry...

...there are many options for the replacement of missing teeth. These include dental implants, fixed bridges, removable partial dentures, and full dentures. Many patients choose removable partial dentures due to factors ranging from cost to physiology. Removable partial dentures became very popular many decades ago when chrome cobalt alloys and acrylic polymers first became available to the dental industry.

Today, dentists are prescribing Valplast® Flexible Partial dentures because they satisfy the patient's demand for excellent aesthetics without high cost and lengthy procedures. The strong, flexible nature of Valplast® is ideally suited to the variety of natural conditions in the mouth using simple designs and enabling the flexible Valplast® resin to act as a built-in stressbreaker in order to provide optimal function and balanced stress distribution in a removable partial denture.



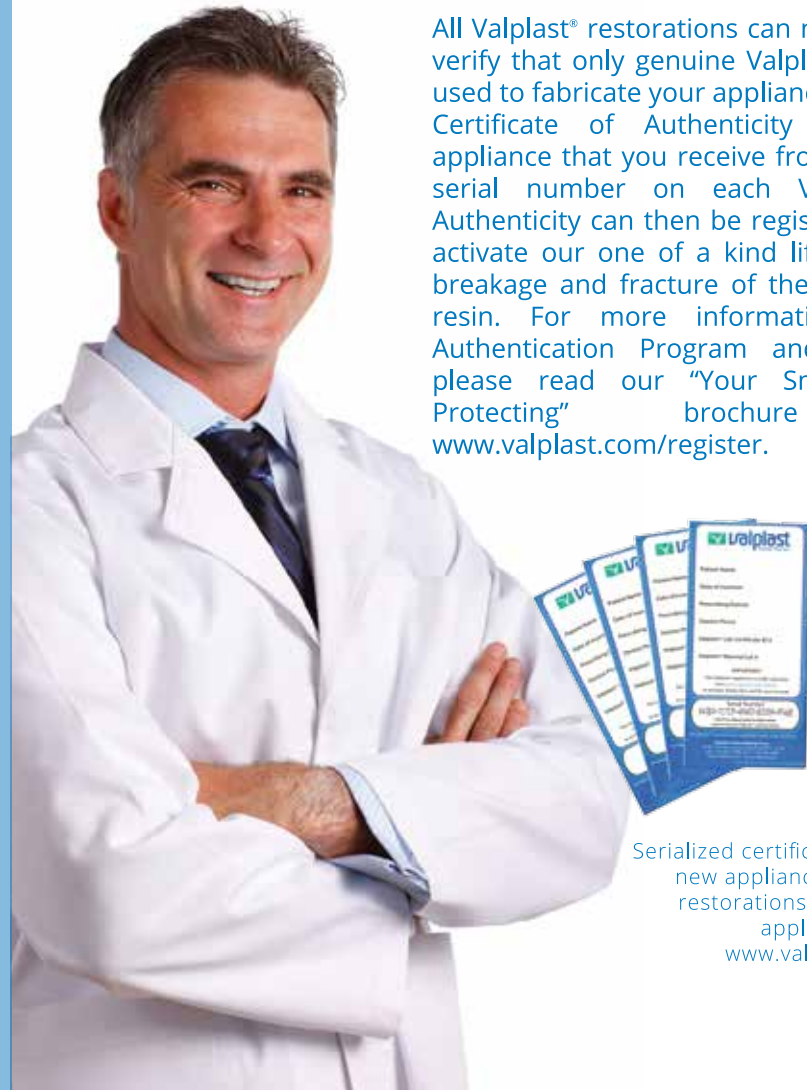
Laboratories and technicians may apply for certification in Valplast® by completing a standardized practical exam that is evaluated annually by our technical education staff.

Consistent Quality

Consistent and successful results come from the technician expertly crafting the patient's restoration from an accurate cast using the best materials. Ongoing support and hands-on workshops provide technicians with thorough technical training and the knowledge to design and fabricate Valplast®. Laboratories and technicians that process their own Valplast® appliances are invited to apply for certification by taking a practical exam to demonstrate proficiency with Valplast® techniques. When you are ready to prescribe a Valplast® restoration we encourage using only Certified Valplast® Laboratories to assure that the technician is using approved techniques and meeting established standards of work. A list of Certified Valplast® Laboratories may be obtained by contacting Valplast or your overseas authorized distributor, or by filling out a request form at www.valplast.com.

Authenticate The Brand You Trust

All Valplast® restorations can now be authenticated to verify that only genuine Valplast® materials are being used to fabricate your appliance. Look for the Valplast® Certificate of Authenticity with every Valplast® appliance that you receive from your lab. The unique serial number on each Valplast® Certificate of Authenticity can then be registered online in order to activate our one of a kind lifetime warranty against breakage and fracture of the Valplast® denture base resin. For more information on the Valplast® Authentication Program and product registration please read our "Your Smile Is Always Worth Protecting" brochure or visit: www.valplast.com/register.



Serialized certificates of authenticity identify new appliances as genuine Valplast® restorations. Register new Valplast® appliances online at www.valplast.com/register.

The Art Of Creating A **valplast** Smile

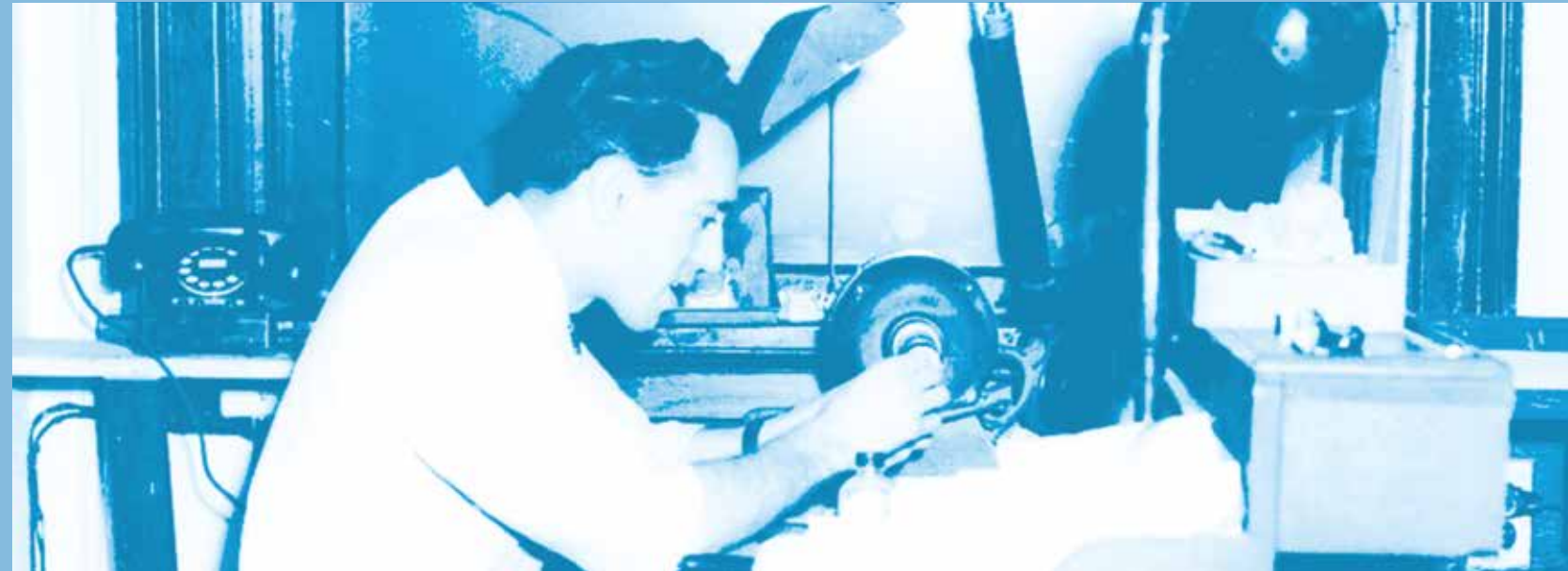
The Valplast® Smile begins with the dental technician's ability to turn raw materials into a living part of the human body. Our decades of experience with flexible partial dentures and injection molding technology enables us to help the technician and laboratory achieve consistent success in their creations. Technical programs held at the Valplast® International Education Center in New York and select authorized education centers around the world are available to technicians interested in learning Valplast® techniques.

The Valplast® Injection System is offered as a complete turnkey package to give laboratories the equipment, materials, accessories and education they need to become a Valplast® processing laboratory. A complete list of kit components and further information on the Valplast® Injection System can be found in our current product catalog and on our website at www.valplast.com.



"We appreciate the beauty of Valplast in its pure form... but it is the art of the technician to turn it into part of a person's smile"

Peter S. Nagy, President



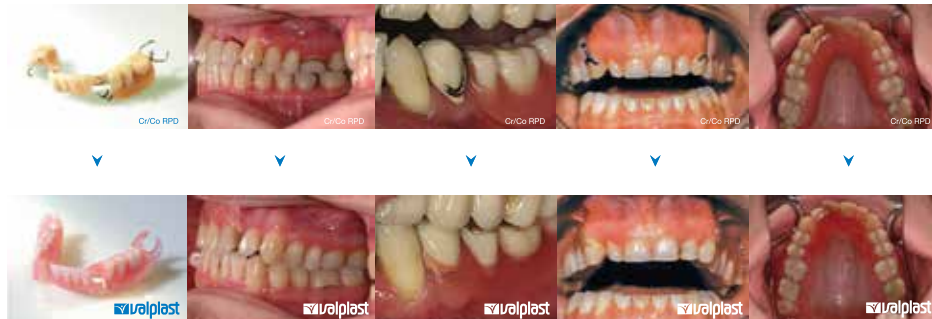
Mr. Arpad Nagy, CDT circa 1953

Innovation

Innovation is often inspired by the need to make improvements in people's lives. Valplast® was first developed in the late 1940's when the acknowledged functional and cosmetic limitations of metal framework-supported RPD's was widely known. Two young brothers, Arpad and Tibor Nagy, had the vision to experiment with new polymers in the nylon family to create a type of partial denture that could address the requirements for retention, support, and stability while providing beautiful aesthetics and an affordable fee. Their research gave birth to what is known today as Valplast®.

Almost sixty years later, Valplast® partials are in high demand for patients that do not qualify for more expensive fixed restorative options but still want to maintain excellent aesthetics in a removable restoration. The cost of a Valplast® partial to replace multiple teeth is often a fraction of the cost of fixed bridges or implants, yet the aesthetics and level of comfort are still far superior to metal frameworks or other resin based partials. Valplast is also an unbreakable material and each Valplast appliance comes with a manufacturers guarantee against breakage and fracture for the lifetime of the appliance.

The Future Of Dentistry

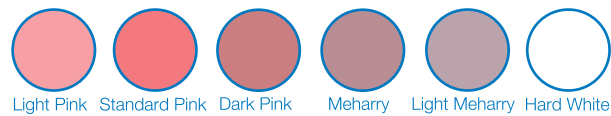


The future of dentistry is in metal-free restorations. Valplast® is the optimal choice anytime partials are indicated or the patient prefers not to use a fixed restoration. Patients who have worn both conventional RPD's and Valplast® partials report that Valplast® feels more natural and is more comfortable to wear. Valplast® also provides a higher standard of function by using the flexibility of the material to balance masticatory forces over the entire supporting ridge instead of individual support points. As a result, the balanced distribution of forces can often lead to longer lasting appliances that may not require frequent relines or tooth additions.

Valplast® is available in five natural tissue shades as well as an additional unpigmented option for special applications. The unique physical properties of Valplast® also make it more adaptable in challenging cases and situations involving pediatric cases, cancerous mouths and cleft palates. Because of its excellent biocompatibility, Valplast® is also an ideal replacement for acrylic when patients are allergic to denture acrylics. Additional applications for Valplast® include cosmetic gum veneers, bruxism appliances, implant retained overdentures and full dentures for patients with protuberant bony structures or large undercuts.

Shades of Valplast

With a naturally translucent material and six available shades, Valplast® can be designed to match the tissue tone of virtually any patient.



Light Pink Standard Pink Dark Pink Meharry Light Meharry Hard White

Special Applications



Unilateral Partial
(Nesbits)



Full Dentures for Cases
with Large Undercuts



TMJ Splints/
Bruxism Appliances



Oral Cancer/
High Tori Cases



Implant Retained
Overdentures



Gingival Veneers



Ectodermal Dysplasia/
Pediatric Cases



Allergy Free Dentures/
Valplast Teeth &
Denture Base

Our Flexibility Means Adjustability

Valplast® uses a unique tissue bearing technique for retention for which no tooth or tissue preparation is needed. Your Certified Valplast® Laboratory requires only a model poured promptly from an alginate impression and counter-model. A digitally fabricated Precist-Fit™ try in is suggested prior to completion of the case. Special abrasives and techniques will allow you to make adjustments and fine tune the fit of any Valplast® partial just as you would with acrylic. Follow these simple instructions to ensure success when working with your next Valplast® case.

First Insertion of a Valplast Denture

Valplast® resin is engineered to provide exactly the right degree of strength and flexibility inside a patient's mouth. In order to facilitate a smooth first insertion of the denture it is best to simulate the conditions of the oral environment by bringing the Valplast® denture up to body temperature. This may be done by immersing the denture in hot tap water for a period of 30-60 seconds before inserting it in the patient's mouth. This will give the material a similar flexural modulus that it would have at body temperature and will enable the patient to adapt to their new prosthesis faster and easier. This procedure will also provide you with important information regarding the fit and comfort of the denture in the event that it may need minor adjustments.

Adjusting a Clasp

Because material thickness and the design of a clasp play an important role in providing retention and stability to a Valplast® Flexible Partial Denture, it is important to exercise caution when adjusting a Valplast® clasp. In many cases it may not be necessary to adjust the thickness or gingival extension of a Valplast® clasp as this could change the flexibility of the material. If a clasp fits too tight in the patient's mouth it is recommended to place the clasp in hot water for 60 seconds then bend the clasp outwards and allow it to cool down gradually to relax the elastic memory of the material. If a clasp is too loose you may use the same technique, bending the clasp inwards to tighten it.

Minor Relief

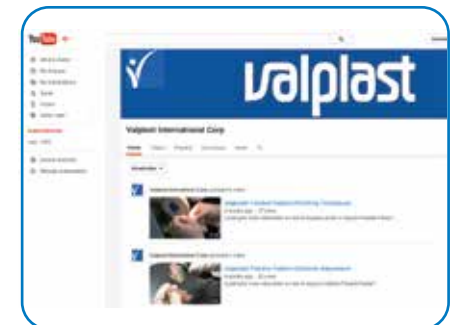
In some cases it may be necessary to provide minor relief to the denture in order to provide a better fit and increased comfort to the patient. This may be done by using the Valplast® #13 Green Stone on a slow speed handpiece to relieve the denture surfaces and borders. A constant motion of the bur over the material contact surface will yield a very smooth surface that usually does not require repolishing.

Adding Teeth & Rebasing Valplast

To add teeth to Valplast®, take an alginate impression with the case in place in the mouth. Remove the case from the mouth while still in the impression, making sure that all pastes and adhesives have been removed and the partial is fully seated in the impression. Pour the model promptly and forward it to your Certified Valplast® Laboratory with your prescription. To rebase a Valplast® partial, begin by taking a rubber base impression underneath the case. The patient's mouth should be closed to ensure full and correct occlusion as the rubber base material sets. When the rubber base has set, take an overall alginate impression and remove the case from the mouth making sure that the case is still properly positioned in the impression. Pour the model promptly and forward to the laboratory without separating the denture from the model.



The #13 Green Mounted Stone from Valplast should be used for minor relief in place of a carbide bur as it will yield a smooth surface without any rough fibers.



Want to see these techniques in action? Video demonstrations of our recommended techniques can be viewed online at www.valplast.com or by subscribing to www.youtube.com/valplastofficial.