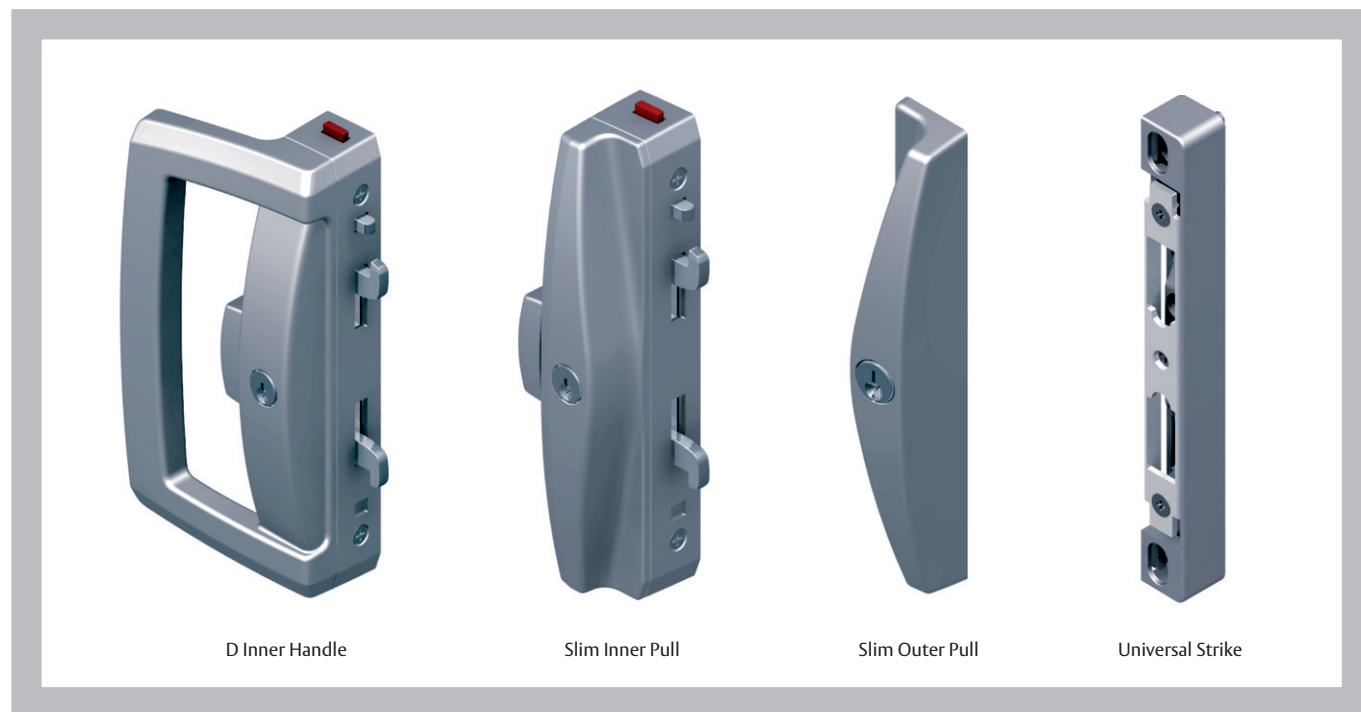




Sliding Door Locks

Sliding Door Locks

Onyx® Sliding Patio Door Lock



The Lockwood Onyx range incorporates advanced security and safety features making this product the ideal choice for sliding patio door applications.

Style and Function

This range takes design cues from contemporary architectural styling and complements several of Lockwood's most popular levers to provide a harmonious look and feel throughout the home.

The functionality of the Onyx range has been enhanced by the intuitive operation of the unique sliding snib and the innovative LockAlert feature that indicates the lock status at a glance.

Application

Surface mounted lockset suitable for use with most aluminium and timber sliding doors.

The flexible chassis coupled with innovative design features results in a non-handed product that is extremely easy to install and suitable for new and most retrofit applications.

Features

- Twin locking beaks for added security
- Door Close Detect button (DCD) anti slam feature protects locking beaks from accidental damage
- **LOCKALERT** indicator shows lockset status at a glance
- **DUALSELECT** enables two stage key locking
- **SAFETYRELEASE** function minimises the risk of being locked in
- Ergonomic sliding snib with intuitive downward motion to unlock

Strength and Durability

Made to the highest quality levels, the Onyx range satisfies the Australian Standard requirements for strength and durability.

Product Range

A wide selection of furniture options are available in the Onyx range to suit various sliding door applications. The range includes internal D handles and slim pulls and a variety of external furniture and strike options.

Sliding Door Locks

Onyx® Sliding Patio Door Lock



Door Thickness

Door thickness range 19mm to 50mm with the standard screw fixing pack provided.

Longer screws and tailbars are available upon application.

Fixing

Surface mounted lockset with concealed fixing. Industry standard 82mm pitching centres.

Handing

Field selectable handing enables selection of handing during installation.

Keying

Standard Keying

- Supplied individually keyed with two keys per lock
- 78,000 key combinations
- Key blank KB2015P

Restricted Special Keying

Lockwood locks can be keyed to a number of controlled and/or specially keyed systems. These range from legally protected keys to protect against unauthorised duplication, which can also include specially designed key systems such as master key systems, which allow for different levels of mechanical access control.

Please refer to section 7 for keying systems or contact your local sales office or customer service for specific information.

Materials

- Zinc diecast construction
- Brass cylinders (Satin Chrome Pearl finish)

Standards

Conforms to Australian Standard AS4145.2:2008. Mechanical Locksets for Doors and Windows in Buildings.

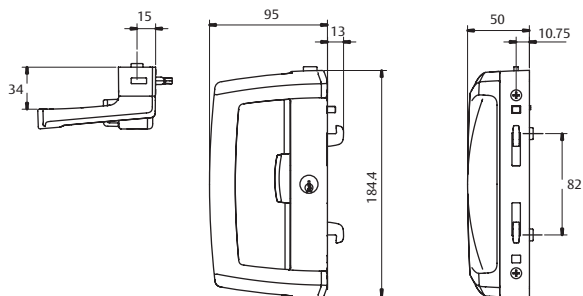
- Physical security – S4
- Durability – D8

Standard Finishes

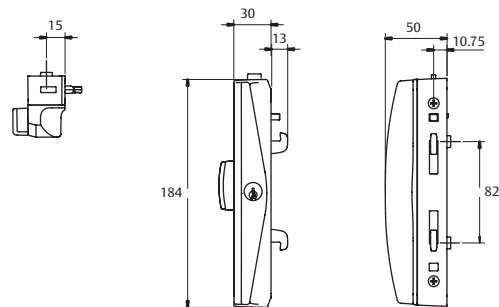
Black Powdercoat	BLK
Silver Powdercoat	SIL
White Powdercoat	WH
Satin Chrome Pearl	SP

Other plated and powdercoated finishes available as special order.

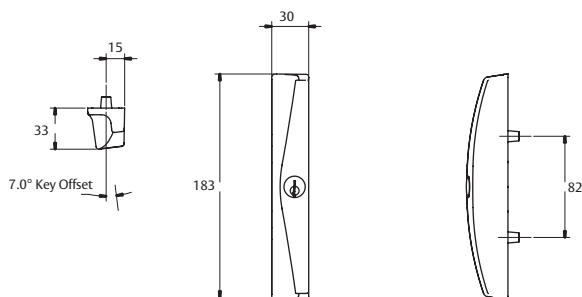
D Inner Handle



Slim Inner Pull



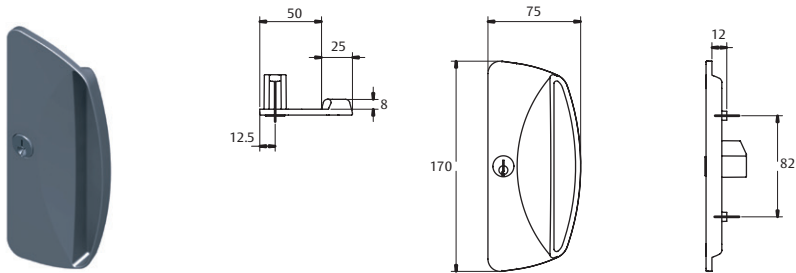
Slim Outer Pull



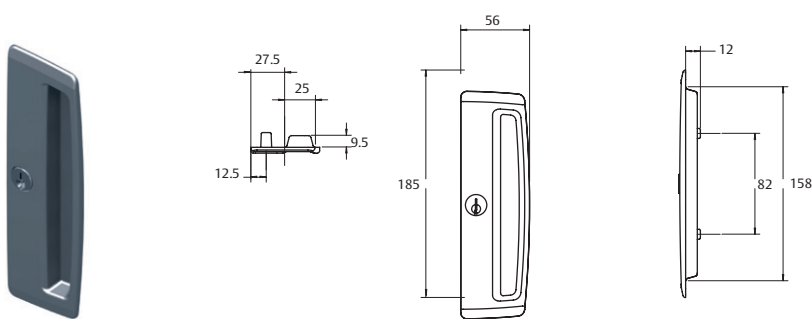
Sliding Door Locks

Onyx® Sliding Patio Door Lock

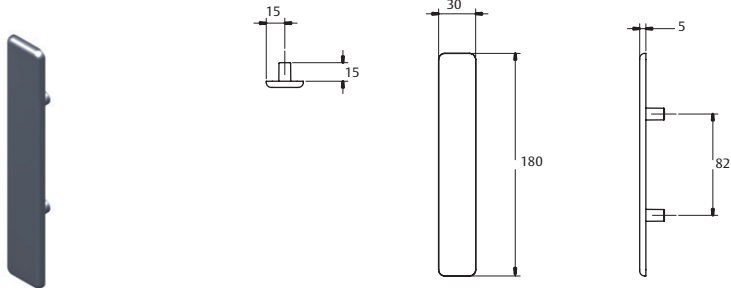
Flat Outer Pull



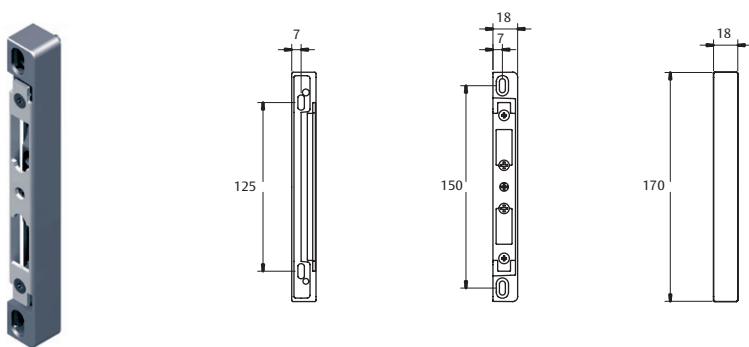
Mortice Outer Pull



Cover Plate



Universal Strike

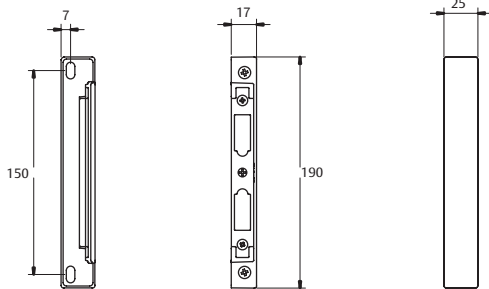


Sliding Door Locks

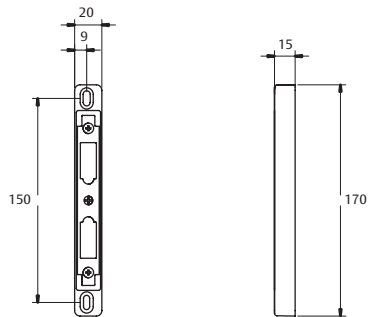
Onyx® Sliding Patio Door Lock



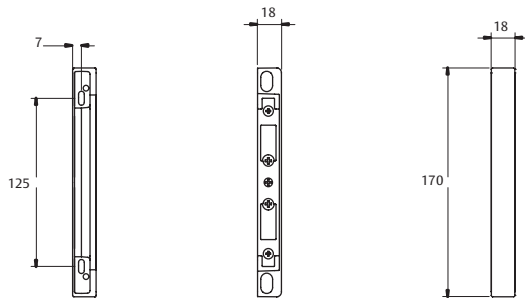
Extra Width Strike



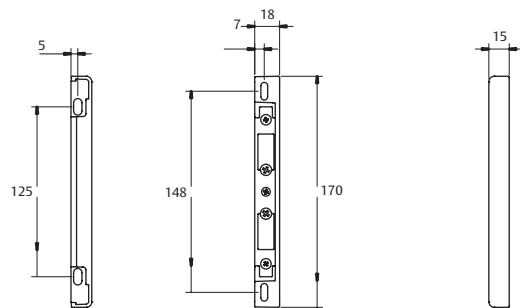
Side Fix Strike



Surface Fix Strike



15mm Surface Fix Strike



Sliding Door Locks

Onyx® Sliding Patio Door Locks Ordering Procedure

Configuration Matrix [For Reference Only]

Sample part number 9A1B2/5PBLK is made up of several sections.
Choose your product by selecting an option from each section.

For example:

Platform / Suite	Internal Furniture	External Furniture	Strike	Cylinder	Finish
9A	1	B	2	5P	BLK

Platform / Suite	Lockwood Patio Door, Style A	9A
Internal Furniture	No Internal Furniture *	0
D Handle Locking		1
D Handle Non Locking		2
Slim Pull Locking		3
Slim Pull Non Locking		4
D Handle Dummy		5
Slim Handle Dummy		6
DAS Handle Locking (D with aided snib)		7
DAS Handle Non Locking (D with aided snib)		8

External Furniture	No External Furniture *	X
Slim Pull Locking		A
Slim Pull Non Locking		B
Flat Outer Pull Locking		C
Flat Outer Pull Non Locking		D
Mortice Pull Locking		E
Mortice Pull Non Locking		F
Cover Plate		G
D Handle Locking		H
D Handle Non Locking		I

* Exterior furniture plate is required to fix internal furniture to door with through screws.

Strike	No Strike	0
Surface (Front) Fix		1
Universal Fix		2
Extra Width Surface Fix		3
Side (Face) Fix		4
Surface 15mm Fix		5

Cylinder	5 pin Cylinder/s	5P
6 pin Cylinder/s		6P
No Cylinders – order cylinder separately		NC
Non Keyed Lockset		XX

Finish	Black	BLK
Silver		SIL
White		WH
Satin Chrome Pearl		SP
Polyester Powder Coat*		PPC

Furniture comes complete with lock or dummy chassis and fixing screw pack to suit 19 – 50mm thick doors.

Furniture comes complete with lock or dummy chassis and fixing screw pack to suit 19 – 50mm thick doors.

* No internal furniture option will also come less lock chassis.

* Specify colour (Dulux number), additional lead time and costs apply.

^ Part number convention is for reference only, not all possible combinations will be available as a pre packed lockset. Some configurations will need to be made up of sub-assemblies. i.e. Two or more line items may be required to make up desired configuration.

The Onyx Sliding Mortice lock combines modern styling with the enhanced security and performance of a mortice lock to offer the ultimate in residential sliding door hardware. Designed and made in New Zealand, the Onyx Sliding Mortice Lock is available in many popular two point combinations. For higher performance and security, optional four point combinations are available. Easy to operate by a key or snib and suitable for Aluminium and some timber doors up to 45mm thick, the Onyx Sliding Mortice Lock is a benchmark for style, function and security.

The flexible chassis coupled with innovative design features results in a non handed product that is easy to operate.

General Features

- Modern Onyx styling combined with a concealed mortice lock
- Door Close Detect button (DCD) anti slam feature protects locking beaks from accidental damage
- Opposing twin beaks prevent the door from being lifted off the track
- **LOCKALERT®** indicator shows lockset status at a glance
- Snib action always moves upwards, regardless of door handing
- Includes square drive screws for improved performance against damage during installation
- The C4 cylinder can be easily rekeyed to existing C4 profile door and window locks

Door Thickness

Suits doors up to 45mm thick.

Keying

- 5 pin cylinder as standard



Handing

Non - Handed: Fully reversible for left and right hand applications

Materials

- Zinc diecast construction
- Brass cylinders

Options

- Non-locking (Snib operated only)
- Deadlocking (key operated only)
- Dummy
- Internal D Handle or Slimline furniture

Standard Finishes

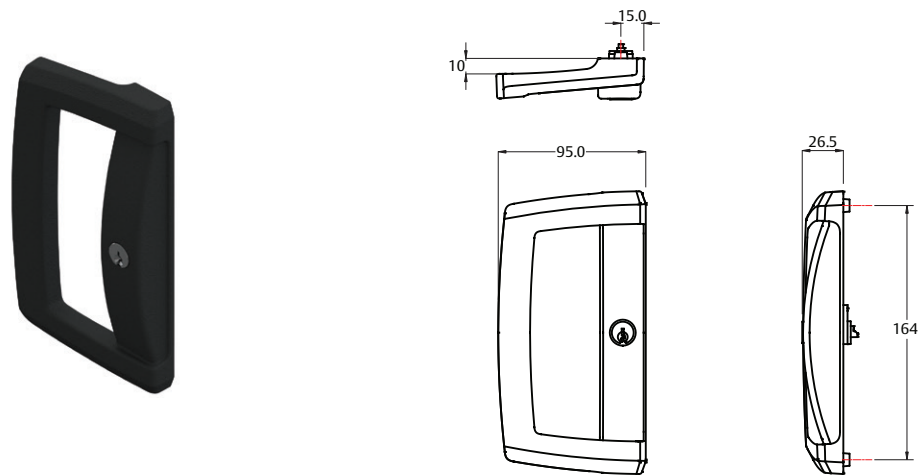
- Polyester Powdercoat - PPC
- Satin Chrome Pearl - SP (2 point versions only)

All powder coat colour finishes are to be ordered as PPC (Polyester Powder Coat)

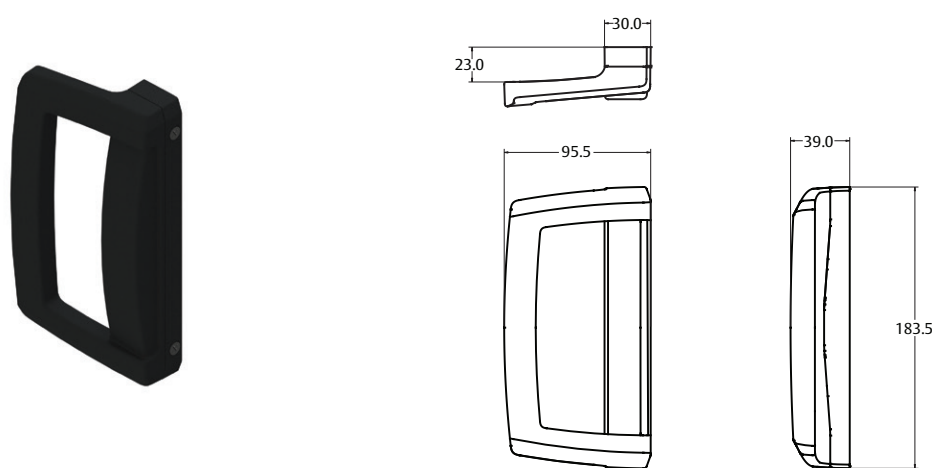
Sliding Door Locks

Onyx® Sliding Mortice Door Lock

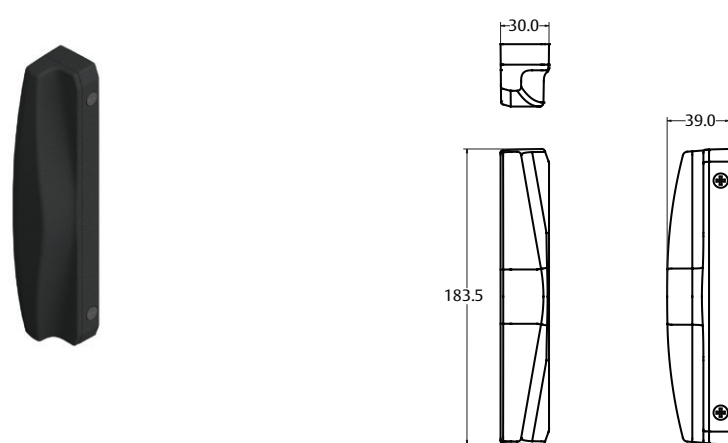
Internal D Handle with Cylinder



Dummy D Handle



Internal Slim Dummy

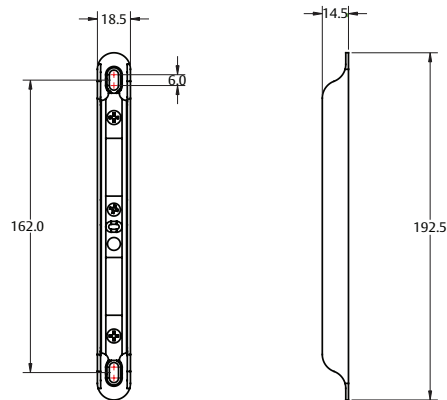


Sliding Door Locks

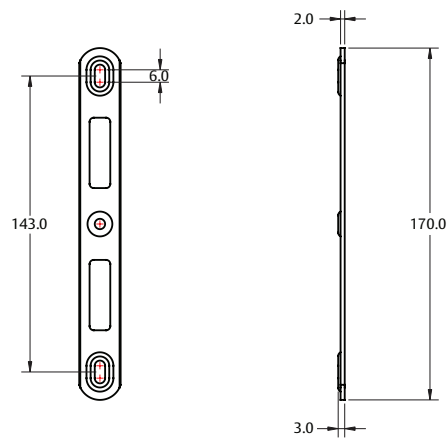
Onyx® Sliding Mortice Door Lock



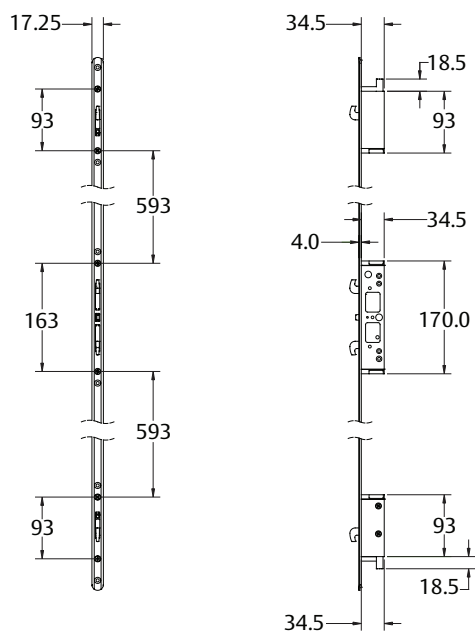
Adjustable Strike



Flat Strike



4 Point Lock



Sliding Door Locks

Onyx® Sliding Mortice Door Lock

Configuration Matrix [For Reference Only]

Sample part number 9M1A6/5P2PPC is made up of several sections.
Choose your product by selecting an option from each section.

For example:

Platform /Suite	Internal Furniture	External Furniture	Strike	Cylinder	Locking Points	Finish
9M	1	A	6	5P	2	PPC

Platform / Suite	External Furniture	Cylinder
Onyx Sliding Mortice Lock 9M	No External Furniture X	5 pin Cylinder/s 5P
	Slim Pull Locking A	No Cylinders XX
	Slim Pull Non Locking B	
	Cover Plate G	

Internal Furniture	Strike	Locking Points
D Handle Locking 1	Universal Mortice Strike 6	2 point lock 2
D Handle Non Locking 2		4 point lock 4
Slim Pull Locking 3		
Slim Pull Non Locking 4		
D Handle Dummy 5		
Slim Handle Dummy 6		

Finish
Satin Chrome Pearl SP
Polyester Powder Coat* PPC

Please note: Not all configurations are available as a prepacked lockset. Please refer to the Residential Price book for available part number combinations. Four Point locks are not available in Satin Chrome Pearl.

Available Part Numbers

4 POINT LOCK COMBINATIONS	Powder Coat	Satin Chrome Pearl
D Inner, Slim outer with 5 Pin double cylinder	9M1A6/5P4PPC	
Slim Inner, Slim Outer with 5 Pin double cylinder	9M3A6/5P4PPC	
D Inner, Slim Outer with 5 Pin outer cylinder	9M2A6/5P4PPC	
Slim Inner, Slim Outer with 5 Pin outer cylinder	9M4A6/5P4PPC	

2 POINT LOCK COMBINATIONS	Powder Coat	Satin Chrome Pearl
D Inner, Slim Outer with 5 Pin double cylinder	9M1A6/5P2PPC	9M1A6/5P2SP
D Inner, Slim Outer, Non-locking, Snib only	9M2B6/XX2PPC	9M2B6/XX2SP
D Inner, Outer Cover Plate, 5 Pin inner cylinder	9M1G6/5P2PPC	9M1G6/5P2SP
D Inner, Slim Outer Dummy	9M5B0/XX2PPC	9M5B0/XX2SP
Slim Inner, Slim Outer with 5 Pin double cylinder	9M3A6/5P2PPC	9M3A6/5P2SP
Slim Inner, Slim Outer with 5 Pin inner cylinder	9M3B6/5P2PPC	9M3B6/5P2SP
Slim Inner, No Outer Pull, 5 Pin inner cylinder	9M3X6/5P2PPC	9M3X6/5P2SP
Slim Inner, Slim Outer, Non-locking Snib Only	9M4B6/XX2PPC	9M4B6/XX2SP
Slim Inner, Slim Outer, Dummy	9M6B0/XX2PPC	9M6B0/XX2SP

Sliding Door Locks

Symmetry® Cavity Sliding Door Range



7444 Entrance Set



7450 Passage Set



7400 Privacy Set

Lockwood's sliding door lock range is possibly the most innovative and aesthetically pleasing lock for a cavity sliding door in Australia. Combining elegance and ease of use, the Symmetry 7400 series is ideal for any home décor and security solution.

Not only will the internal bathroom or lounge room sliding door have a contemporary look, but the interconnecting door from the garage to the laundry can be fitted with a key lockable entrance-set for security.

Key Features

Designed in Australia for specific Australian market conditions

- Easily fitted into a standard 54mm door preparation with a 60mm backset
- Fitted flush against the panel of the sliding door for full recess into the door cavity
- Entrance, Privacy and Passage functions available for the residential solution

Key lockable solution

- Key locking and turn function protects the secondary external application for an interconnecting sliding cavity door
- Australian standards compliance AS41452.2-2008: Tested to exceed 30,000 turn cycles withstanding 3 kN of pull force

Retractable door pull

- Revealed after extensive research, the sliding cavity door lock features an innovative retractable door pull which highly appeals to the discerning home owner

Materials

- Furniture plate: Zinc Alloy
- Bolt: Nickel Plated Zinc (12.4mm projection)
- Bolt Beak: Stainless Steel
- Front End Plate: Stainless Steel
- Retractable Door Pull: Zinc Plated
- Strike Plate: Stainless Steel
- Strike Box: Zinc Plated
- Keys: Brass

Fitting/Fixing

- Standard 54mm prep hole
- Standard 60mm latch backset
- Standard 25mm cross-drill
- Retractable door pull

Door Thickness

32* to 40mm for timber doors
* Requires spacer ring (included)

Strike

Box strike or pip strike (passage).

Sliding Door Locks

Symmetry® Cavity Sliding Door Range

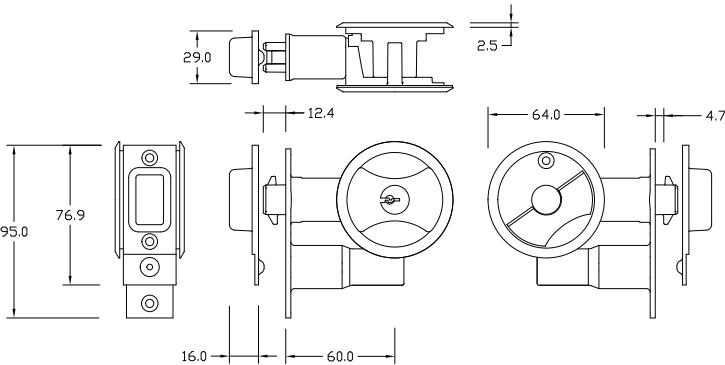


7444 Entrance Set

Order Code
7444SPDP
7444CPDP

Outside
Locked or unlocked by key

Inside
Locked or unlocked by turn-plate

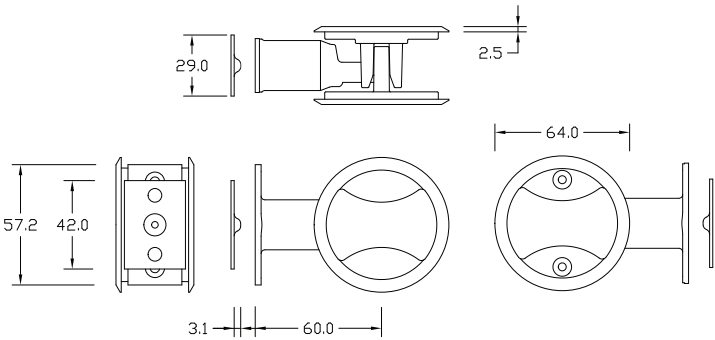


7400 Privacy Set

Order Code
7400SPDP
7400CPDP

Outside
Emergency release button opened by coin or screwdriver

Inside
Locked or unlocked by turn-plate

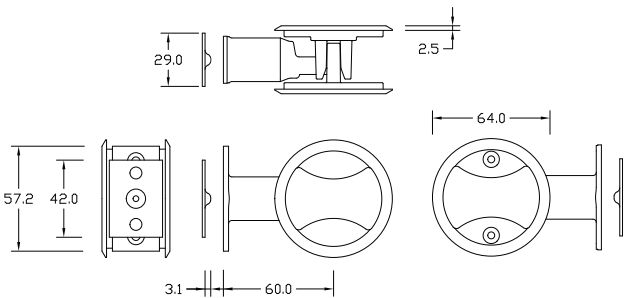


7450 Passage Set

Order Code
7450SPDP
7450CPDP

Outside
Free to slide door at all times

Inside
Free to slide door at all times



ASSA ABLOY is the global leader in door opening solutions, dedicated to satisfying end-user needs for security, safety and convenience



Lockwood is the leading brand in the Australian locking industry. With an established reputation for high quality products, this iconic brand provides a wide range of locking solutions to residential housing, commercial building and industrial application markets. Lockwood is supported by an extensive distribution and after-sales support network. Our customers include retailers, architects, trade and industrial personnel, locksmiths and security dealers.

ASSA ABLOY

ASSA ABLOY is the global leader in door opening solutions, dedicated to satisfying end-user needs for security, safety and convenience.

ASSA ABLOY is represented in all major regions, in both mature and emerging markets, with leading positions in Australia, Europe and North America.

As the world's leading lock group, ASSA ABLOY offers a more complete product range of door opening solutions than any other company in the market.

Australia

1300 LOCK UP (1300 562 587)
lockweb.com.au

New Zealand

Telephone +64 9415 7111
assaabloy.co.nz

ASSA ABLOY Australia Pty Ltd
235 Huntingdale Road
Oakleigh, Victoria, 3166
Australia

info.au@assaabloy.com
assaabloy.com.au

ASSA ABLOY New Zealand Ltd
6 Armstrong Road
Albany, North Shore City, 0632
New Zealand

info.nz@assaabloy.com
assaabloy.co.nz

