



HELPING TREES & THEIR PEOPLE GET ALONG



WHO IS THE TREE DOCTOR?

Adam Tom, Principal Consultant

Growing up on a farm, Adam acquired a fascination with trees. This fascination led Adam to study at the University of New England, from which he graduated in 1985 with a degree in plant sciences and a graduate diploma in horticulture. Adam spent the next 12 months working with the NSW Forestry Commission in Bathurst before accepting a position with an urban horticulture company in Brisbane. This provided Adam with something a little more challenging than a career in Pinus monocultures.

The Tree Doctor (Qld) Pty Ltd was founded by Adam in 1992 and he has since worked to establish a strong reputation for quality tree care and a loyal clientele. The Tree Doctor provides specialist contracting and consulting services on both a local and international basis.

Adam continues to improve his arboricultural knowledge by regular attendance at workshops, conferences and schools on a national and international basis. He regularly facilitates workshops for both Arboriculture Australia and QAA. Adam and his staff at The Tree Doctor have made it their business to know what makes trees work and therefore how to care for them.

Adam was a founding committee member and is a past President of both the ISA Australia Chapter (now Arboriculture Australia) and the Queensland Arboricultural Association (QAA). When not grafted to his desk or out on the job, Adam can be found spending time with his family, back on the farm, climbing trees or fishing.

The Tree Doctor believes trees provide people with a different perspective on the world. We feel trees give us insight into not only the physical elements of our environment, but also an outlook on our ideological perspective.

SIGNIFICANT TREE RETENTION & PROTECTION PROJECTS

Some of The Tree Doctor's more significant tree retention and protection projects are located at:

Roma Street Parklands	Abigroup Contractors
Mater Mothers' Hospital	Abigroup Contractors
Oral Health Centre - University of Qld - Herston	Lend Lease
Science and Technology Precinct - QUT Gardens Point	Leighton Contractors
Riverway – Townsville, Qld	Thuringowa City Council
Queens Park – Toowoomba, Qld	Toowoomba Regional Council

MAJOR TREE TRANSPLANT PROJECTS

Some of our more significant tree relocation projects may be found at:

Roma Street Parklands – Brisbane • 1 x <i>Ficus macrophylla</i> - 43 tonnes	Abigroup Contractors
Forest Place – Clayfield • 1 x <i>Delonix regia</i> - 55 tonnes	FKP Pty Ltd
Gold Coast Light Rail – Broadbeach • 1 x <i>Ficus obliqua</i> - 57 tonnes	McConnell Dowell
Emerald Lakes – Carrara • 2 <i>Ficus macrophylla</i> - 138 & 118 tonnes	Nifsan Pty Ltd
'Allisee' Hollywell • 1 x <i>Ficus virens</i> - 210 tonnes	Stockland Development
Riverstone Crossing • 1 x <i>Ficus hillii</i> - 130 tonnes	Stockland Development



OUR SERVICES

The Tree Doctor offers a wide range of tree care solutions and services under the canopy of total tree management. The company aims to ensure that all technical information shared with clients and the general public is as simple and uncomplicated as possible. Our step-by-step processes are communicated to clients consistently and regularly.

Consulting Arborist

Adam has provided consulting services to developers, builders and councils on all arboricultural matters with special reference to risk assessments, vegetation surveys, environmental impact statements, the care and assessment of heritage and veteran trees and the retention and protection of trees on construction sites. The Tree Doctor has been responsible for the management and completion of many large tree transplant projects.

Risk assessment

Adam is trained and certified in both the Quantified Tree Risk Assessment (QTRA) and Tree Risk Assessment Qualification (TRAQ). He has undertaken four updates in QTRA since first qualifying in 2006 (TRAQ requires recertification every three years). Detailed risk assessment services have been provided to many clients including Brisbane City Council, Ipswich City Council and the Qld Civil and Administrative Tribunal (QCAT). Services have also been provided to several prominent legal firms.

Tree care

The Tree Doctor provides care and management for a range of different trees in a variety of environments. These include residential trees, which can be of concern due to size or form and may need to be assessed for safety reasons; Veteran Trees, which involves the care of aged trees which are significant to a community; Heritage Trees – those with heritage listings and that are of historical importance to the area or country; and trees in public spaces (i.e. parks, schools etc) which require care and maintenance and risk assessment to ensure those trees are healthy and safe.

Tree transplanting

Often trees require removal and transplanting due to the situation they find themselves in. The Tree Doctor has transplanted many trees to make way for construction and developments, or simply because the environment is no longer suitable for that tree. Transplanting is usually beneficial and in the interests of safety for the tree and people around it.

Expert witness

As a professional arborist and horticulturalist, Adam has been called upon to give expert testimony on many occasions. Cases have included retention and protection of trees on development sites; injuries and damage resulting from the failure of hazardous trees; crane accidents involving the lifting or removal of trees; tree disputes between neighbours, developers and builders; insurance claims involving trees and inefficient and dangerous work practices involving unqualified or poorly trained arborists.

Education

Adam has worked as a guest lecturer on Mature Tree Transplant Techniques to the third year Landscape Architecture & Built Environment students at QUT and as a guest lecturer at the UQ Agricultural College in Gatton for the topic of Advanced Tree Production and Agro forestry.

Assessment of trainees

Adam holds both certificates in Instructional Skills and Workplace Training & Assessment and is qualified to examine and assess arboriculture students from TAFE and private providers up to the National Competency Level AQF Level 6. This competency level covers arborists for proficiency in work quality, site safety and management.

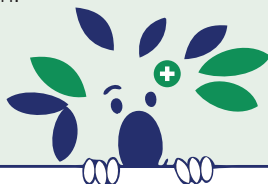
TREE TRANSPLANT METHODOLOGIES

Many years of experience has allowed The Tree Doctor to develop several methods for lifting and transporting trees.

The method chosen for a transplant is dependent on many factors but most importantly on the tree. No two transplants will ever be exactly the same.

The Tree Doctor will recommend the method most suitable to the tree and the client's needs. Our methods are practised and extremely successful. Naturally, there are distinct advantages and disadvantages with each of our preferred methods and these play a significant role when choosing the correct method for the tree in question.

Essentially, The Tree Doctor aims to provide an economical solution for the client and most importantly, a successful transplant that successfully retains the tree in excellent health.



HISTORIC & VETERAN TREES

The Dig Tree

The Dig Tree and Burke and Wills expedition through central Australia to the Gulf of Carpentaria and return are an iconic part of Australia's history. Whilst most Australians are aware of the tragedies associated with the Burke and Wills saga and in particular the tree, very few are aware of where the tree is actually located or that the tree is still alive. Until recently, the poor roads which lead to the channel country and Cooper Creek in south-west Queensland restricted visitor numbers and minimising visitor impacts has assisted with the protection and longevity of The Dig Tree. Whilst arid zone plants are usually hardy and adaptable, significant changes to the growing environment may initiate plant decline. In this instance, it is the influences of the increasing number of visitors to the site that may lead to the decline in health of this living national monument.

In efforts to retain this significant tree, Adam has worked in conjunction with the Department of Environment and Heritage Protection, members of the Queensland Historical Society, officers of Bulloo Shire Council, representatives of Santos and Nappa Merrie Station and The Burke and Wills Society since 1999 to ensure The Dig Tree remains a healthy specimen well into the future. His last visit to the tree to report on its health was in April 2012.

Adam frequently assists with the management of the tree via phone conference and assessment of images provided by the owners.

Scar Trees

The Tree Doctor is committed to working with indigenous communities to identify, relocate, preserve and maintain significant scar and ceremonial trees.

This ensures the preservation of Aboriginal heritage in areas where development would otherwise cause the loss of these culturally significant trees and sites forever.

The Tree Doctor currently consults on several sites.

AWARDS

- In 2006, Adam Tom was awarded an Honorary Life Membership of the Queensland Arboriculture Association for dedicated service to the QAA and promotion of safety awareness and instruction throughout the industry.
- In 2005, The Tree Doctor was presented with the Grand Award of Excellence for a second time. On this occasion, for the relocation of a very large white fig, *Ficus virens*, at Hollywell on the Gold Coast. This particular tree weighed in excess of 200 tonnes.
- In 2002, The Tree Doctor was the recipient of the National Arborist Association (USA) Grand Award of Excellence for the transplant of two very large *Ficus macrophylla* at Emerald Lakes on the Gold Coast.

TESTIMONIALS

“ Adam, as director of The Tree Doctor, offers a depth of knowledge, extent of qualification and commitment to excellence in arboriculture second-to-none in South East Queensland. He draws upon a sound scientific/evidence base, complemented with thorough fact gathering, site specific investigation and customer focus. He takes the time to help you refine your brief (or request) so that he gets on your page and you get what you really need. His recommendations will work every time and his team have the capacity to follow through. ”

– Lyndal

“ The work was carried out with care, expertise and courtesy. I will always recommend your work and service. ”

– Alayne

“ They did a fabulous job. It was as though they removed the vine surgically, delicately, without so much as touching the other plants. Very, very difficult to do, but they did it! ”

– Rowena

“ A very professional job! Efficient, pleasant people with whom I felt confident with the task at hand. ”

– Pam



Adam Tom Principal Consultant

PO Box 357, Everton Park QLD 4053
T: 07 3855 2855 E: trees@thetreedoc.com

@oktrees /TheTreeDoc
www.thetreedoc.com

