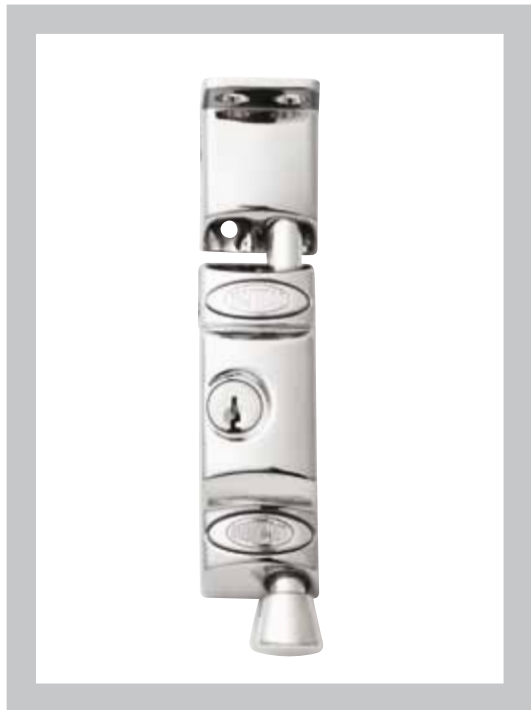




Bolts

680 Patio Bolt



The Lockwood 680 Patio Bolt is a strong, heavy duty, surface mounted product designed to improve security in a range of residential sliding and hinge door applications.

It is easy to install and has been designed to suit a wide range of aluminium and timber sliding patio and hinge door applications.

It is offered in gold, chrome plate, satin chrome pearl and a range of powdercoat finishes.

Features and Specifications

Standards

Exceeds Australian Standard 4145.2-2008, Mechanical Locksets for Doors and Windows in Buildings, to Level SL6 – with standard length bolt, to Level SL4 – with accessory extended length bolt.

Case

High purity high pressure zinc alloy.

Bolt

Steel, zinc plated.

Bolt Head

Powder coat models:

Moulded from ABS polymer.

Plated models:

Bright chrome plated high pressure zinc alloy.

Fixing

Concealed fixing by Phillips head screws.

Cylinder

Solid brass 5 pin cylinder.

Keying

Standard Keying

- Supplied individually keyed with two keys per lock
- 78,000 key combinations
- Key blank KB2015P

Restricted Special Keying

- Lockwood locks can be keyed to a number of controlled and/or specially keyed systems. These range from legally protected keys to protect against unauthorised duplication, which can also include specially designed key systems such as master key systems, which allow for different levels of mechanical access control.
- Please refer to section 7 for keying systems or contact your local sales office or customer service for specific information.



Note: An installation video for this product can be found at lockweb.com.au

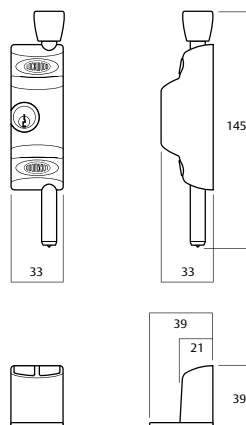
Bolts

680 Patio Bolt

Display Pack

Single 680 Patio Door Bolt
Standard Diecast Strike, Flat Strike and Ferrule Strike.

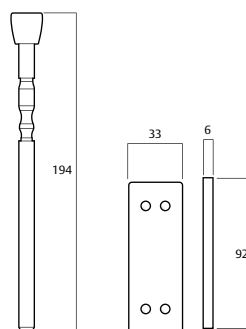
Gold	680-NGLDDP	PB cylinder
Chrome Plate	680-NCPDP	CP cylinder
Satin Chrome Pearl	680-N2SPDP	SP cylinder
Black	680-NBLKDP	SP cylinder
Brown	680-NBRNDP	PB cylinder
Primrose	680-NPRMDP	PB cylinder
White	680-NWHDP	SP cylinder



Standard Diecast Strike

Two 680 Patio Door Bolts, Keyed Alike
Standard Diecast Strike, Flat Strike and Ferrule Strike.

Satin Chrome Pearl	680-N2SPDP
Brown	680-N2BRNDP
White	680-N2WHDP



Extended Bolt

Case Packer

Trade Pack

Complete with Standard Diecast Strike

Gold	680-NGLD
Chrome Plate	680-NCP
Satin Chrome Pearl	680-NSP
Black	680-NBLK
Brown	680-NBRN
Primrose	680-NPRM
White	680-NWH

Flat Strike

Zinc Plated Steel 680-N453

Case Packer

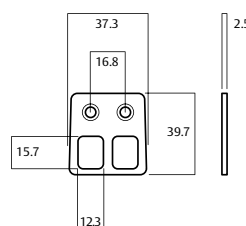
Plastic Black (6.0mm) 680-N316

Extended Bolt – Extended by 50mm

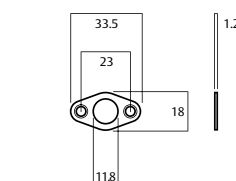
Black 680-N210BLK

Accessories

- 6mm thick case packer for use under the lock body
- Extended 50mm length bolt with black moulded plastic head
- Standard diecast strike, flat strike and ferrule strike



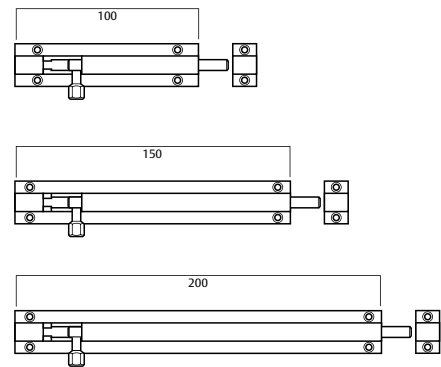
Flat Strike



Ferrule Strike

Bolts

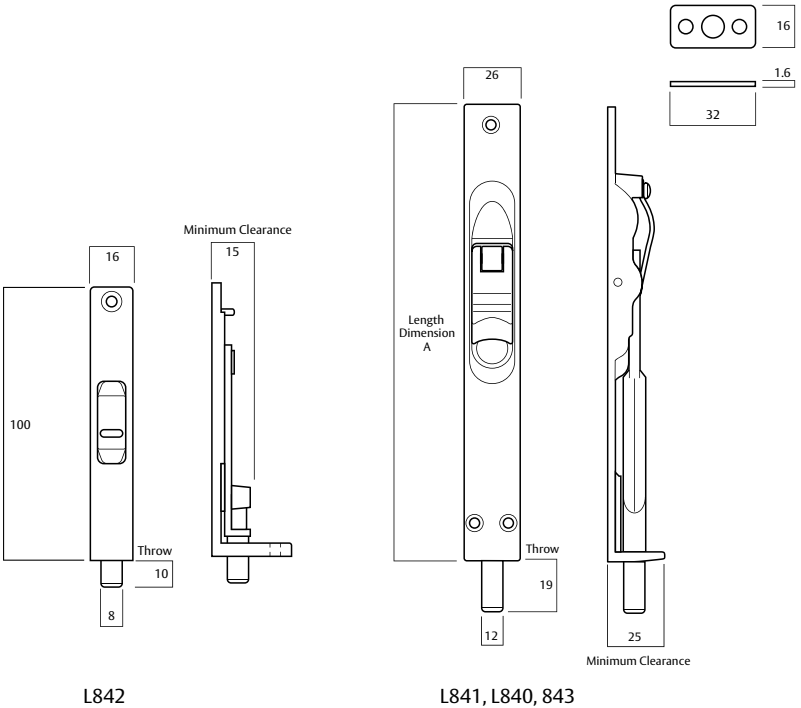
Barrel Bolts



Features and Specifications

- Brass barrel bolts
- Available in three lengths: 100, 150 and 200mm
- Visible fixing
- Individually display packed, complete with fixing screws

Product	Length	Finishes	Packaging	Part Number
L333	100mm	Satin Chrome Pearl	Display pack	L333 – 100SPDP
L333	150mm	Satin Chrome Pearl	Display pack	L333 – 150SPDP
L333	200mm	Satin Chrome Pearl	Display pack	L333 – 200SPDP



L842

Designed for use on small timber doors and cupboards, the L842 is a flush mounted bolt incorporating a slide action to throw or withdraw the bolt. Available in 100mm length.

L841 and L840

The L841 and L840 are flush mounted bolts incorporating a toggle action to throw or withdraw the bolt. Available in 150 or 200mm lengths, dimension A (nominal length).

843

The 843 employs the L840 body with bolt extending to 600mm overall, using a 6.5mm diameter steel threaded rod, brass tip and lock nuts.

Features and Specifications

Materials

Zinc alloy casting.

Packaging

L840, L841 and L842 are individually display packed, complete with fixing screws.
843 supplied in trade pack.

Bolt Throw

L841, L840, 843 Toggle Action, L842 Slide Action.

Application

Designed for timber doors.

Product	Bolt Throw	Length	Finishes	Packaging	Part Number
L842	Slide Action	100mm	Chrome Plate	Display Pack	L842CPDP
			Polished Brass	Display pack	L842PBPD
			Satin Chrome Pearl	Display pack	L842SPDP
Product	Bolt Throw	Length	Finishes	Packaging	Part Number
L841	Toggle Action	150mm	Chrome Plate	Display Pack	L841CPDP
			Polished Brass	Display Pack	L841PBPD
			Satin Chrome Pearl	Display Pack	L841SPDP
L840	Toggle Action	200mm	Chrome Plate	Display Pack	L840CPDP
			Polished Brass	Display Pack	L840PBPD
			Satin Chrome Pearl	Display Pack	L840SPDP
843	Toggle Action	600mm	Satin Chrome Pearl	Trade Pack	843X600SP

ASSA ABLOY is the global leader in door opening solutions, dedicated to satisfying end-user needs for security, safety and convenience



Lockwood is the leading brand in the Australian locking industry. With an established reputation for high quality products, this iconic brand provides a wide range of locking solutions to residential housing, commercial building and industrial application markets. Lockwood is supported by an extensive distribution and after-sales support network. Our customers include retailers, architects, trade and industrial personnel, locksmiths and security dealers.



ASSA ABLOY is the global leader in door opening solutions, dedicated to satisfying end-user needs for security, safety and convenience.

ASSA ABLOY is represented in all major regions, in both mature and emerging markets, with leading positions in Australia, Europe and North America.

As the world's leading lock group, ASSA ABLOY offers a more complete product range of door opening solutions than any other company in the market.

Australia
1300 LOCK UP (1300 562 587)
lockweb.com.au

New Zealand
+64 9415 7111
assaabloy.co.nz

ASSA ABLOY Australia Pty Ltd
235 Huntingdale Road
Oakleigh, Victoria, 3166
Australia

info.au@assaabloy.com
assaabloy.com.au

ASSA ABLOY New Zealand Ltd
6 Armstrong Road
Albany, North Shore City, 0632
New Zealand

info.nz@assaabloy.com
assaabloy.co.nz

