

**Continental**



**Performance**

Product Catalogue



## 1 in every 3 cars produced in Europe are fitted with Continental Tyres.

It all begins with the customer – and their desire to find a tyre that perfectly suits their every requirement. And it ends with the customer – receiving exactly the tyre they are looking for, from Continental.

In Europe today, every third car rolling off the production line is fitted with Continental tyres, making it the number one original equipment manufacturer in Europe.

To Continental, this eminent position and the trust shown in its tyres by all the major premium vehicle manufacturers, is the best proof of the recognised quality of Continental products. If the world's top car manufacturers are willing to place their trust in Continental, so can you!

# Feature Icons



HANDLING



QUIET



COMFORT



WET BRAKING



GRIP



FUEL EFFICIENCY



SPORTS PERFORMANCE



ASYMMETRICAL



DURABILITY

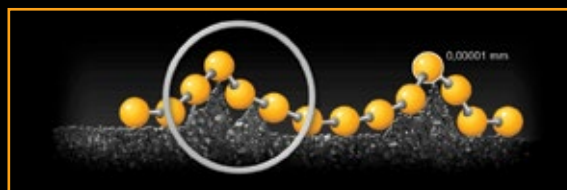


OFFROAD

# Tyre Technology



**Black Chilli Technology** is a specially developed compound technology involving an innovative type of racing grade carbon black, ensuring a faster warm-up process and greater stability.



**SSR Technology** enhanced tyres have a self-supporting sidewall that safeguards the tyre from becoming compressed between the rim and the road surface if the tyre becomes deflated. Depending on road surface quality, weather conditions and vehicle weight, the vehicle is able to continue travelling safely at a maximum speed of 80 km/h for a distance up to 80 km.



**ContiSeal™** gives enhanced mobility and safety, even if a foreign object penetrates the tyre tread. ContiSeal™ tyres have a sticky, viscous layer from shoulder to shoulder that instantly seals punctures caused by nails and other objects up to 5mm in diameter. The layer temporarily seals the vast majority of tyre tread punctures.

## ContiSportContact® 2

The ContiSportContact® 2 is part of the ContiSportContact® range and is used extensively as original equipment by the world's leading car manufacturers.

### SIZE OVERVIEW

**SPEED INDEX** V, W, Y  
**RIM DIAMETER** 16"-21"  
**TYRE WIDTH** 205 - 295  
**SERIES** 40 - 55



#### HANDLING

Maximised contact area through innovative tread pattern design results in high levels of grip and increased safety.



#### WET BRAKING

Optimised compound featuring activated silica technology delivers reduced stopping distances.



#### SPORTS PERFORMANCE

This tyre incorporates features designed to deliver optimum levels of grip and handling in wet and dry conditions.



#### GRIP

A combination of Black Chilli silica compound and an innovative tread pattern design delivers high levels of grip.



#### ASYMMETRICAL

Optimised tread pattern delivers higher safety reserves and lowers the risk of hydroplaning.

#### OE FITMENT LIST

Alfa Romeo 159; Audi A1, A4, A5, A6, RS4, RS5, S4, S6; BMW 1 Series, 3 Series, M3, 5 Series, X3; Citroën DS5; Holden Cruze; Jaguar F Type; Mercedes Benz C Class, CL Class, CLS, E Class, R Class, SLK, S Class; MINI Cooper; Opel Astra, Insignia; Peugeot 308, RCZ; Porsche Cayman, Boxster, Cayenne, Panamera; Renault Latitude; Skoda Fabia RS, Superb; Suzuki Swift; Volvo S60, V60; VW Golf, Jetta, Passat, Scirocco.

## ContiSportContact® 3

The ContiSportContact® 3 is part of the ContiSportContact® range and is used extensively as original equipment by the world's leading car manufacturers.

### SIZE OVERVIEW

**SPEED INDEX** V, W, Y  
**RIM DIAMETER** 17"-20"  
**TYRE WIDTH** 195 - 285  
**SERIES** 30 - 55

#### OE FITMENT LIST

Alfa Romeo 159; Audi A1, A4, A5, A6, RS4, RS5, S4, S6; BMW 1 Series, 3 Series, M3, 5 Series, X3; Citroën DS5; Holden Cruze; Jaguar F Type; Mercedes Benz C Class, CL Class, CLS, E Class, R Class, SLK, S Class; MINI Cooper; Opel Astra, Insignia; Peugeot 308, RCZ; Porsche Cayman, Boxster, Cayenne, Panamera; Renault Latitude; Skoda Fabia RS, Superb; Suzuki Swift; Volvo S60, V60; VW Golf, Jetta, Passat, Scirocco.



#### HANDLING

Maximised contact area through innovative tread pattern design results in high levels of grip and increased safety.



#### WET BRAKING

Optimised compound featuring activated silica technology delivers reduced stopping distances.



#### SPORTS PERFORMANCE

This tyre incorporates features designed to deliver optimum levels of grip and handling in wet and dry conditions.



#### GRIP

A combination of Black Chilli silica compound and an innovative tread pattern design delivers high levels of grip.



#### ASYMMETRICAL

Optimised tread pattern delivers higher safety reserves and lowers the risk of hydroplaning.

## ContiSportContact® 5

The latest generation of the ContiSportContact® range delivers the highest levels of sports performance and safety in all conditions.

### SIZE OVERVIEW

**SPEED INDEX** V, W, Y  
**RIM DIAMETER** 17"-20"  
**TYRE WIDTH** 225 - 315  
**SERIES** 35 - 55

### OE FITMENT LIST

Audi A3; BMW 1 Series, 3 Series, 4 Series, X3, X5; Kia Rio; Mercedes Benz A Class, B Class, C Class, CLS, E Class, ML Class, R Class, SLK, S Class, Viano; Opel Astra GTC; Peugeot 207, 308; Renault Megane 3; VW Passat



### HANDLING

Maximised contact area through innovative tread pattern design results in high levels of grip and increased safety.



### WET BRAKING

Optimised compound featuring activated silica technology delivers reduced stopping distances.



### SPORTS PERFORMANCE

This tyre incorporates features designed to deliver optimum levels of grip and handling in wet and dry conditions.



### GRIP

A combination of Black Chili silica compound and an innovative tread pattern delivers high levels of grip and braking performance.



### ASYMMETRICAL

Optimised tread pattern delivers higher safety reserves and lowers the risk of hydroplaning.



## ContiSportContact® 5P

The ultimate sports performance tyre within the ContiSportContact® range optimised to meet the specific requirements of vehicles using different sizes on front and rear axle positions.

### SIZE OVERVIEW

**SPEED INDEX** Y  
**RIM DIAMETER** 18"-21"  
**TYRE WIDTH** 245 - 295  
**SERIES** 30 - 40



### HANDLING

Maximised contact area through innovative tread pattern design results in high levels of grip and increased safety.



### WET BRAKING

Optimised compound featuring activated silica technology delivers reduced stopping distances.



### SPORTS PERFORMANCE

This tyre incorporates features designed to deliver optimum levels of grip and handling in wet and dry conditions.



### GRIP

A combination of Black Chili silica compound and innovative tread pattern delivers high levels of grip and braking performance.



### ASYMMETRICAL

Optimised tread pattern delivers higher safety reserves and lowers the risk of hydroplaning.

### OE FITMENT LIST

AMG; Audi A4, A5, TT; HSV; Jaguar F Type; Mercedes Benz C Class, CLS, E Class, SLK, SL Class; Renault Megane Sport.



# ContiForceContact®

Road legal tyre specifically designed for vehicles used in track and drive days. Delivers maximum levels of grip.

## SIZE OVERVIEW

**SPEED INDEX** Y

**RIM DIAMETER** 19"-20"

**TYRE WIDTH** 245 - 325

**SERIES** 30 - 35



### HANDLING

Well balanced tyre design offering maximum adhesion and stability in race track conditions.



### SPORTS PERFORMANCE

Incorporates features designed to deliver optimum levels of grip and handling for track and drive day conditions. \*CAMS Approved.



### GRIP

High grip racing compound featuring Black Chilli technology.



### ASYMMETRICAL

Optimised tread pattern delivers higher safety reserves and lowers the risk of hydroplaning.

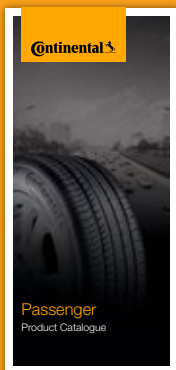
## OE FITMENT LIST

Jaguar F Type.

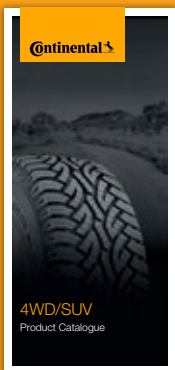
## NOTE

Available only through ContiSportServiceDealer network.

## Also available:



**Passenger**  
Product  
Catalogue



**4WD/SUV**  
Product  
Catalogue




**Light  
Commercial**  
Product  
Catalogue



# Continental

## Contact Continental Tyres

 1800 266 844

Email [marketing.au@continental-corporation.com](mailto:marketing.au@continental-corporation.com)

[www.continental-tyres.com.au](http://www.continental-tyres.com.au)