

Alpha Catering Equipment is **Australia's largest** online store and supplier of **Commercial Catering Equipment**.

END OF FINANCIAL YEAR SALE!

BUY ANY

REFRIGERATOR MANUFACTURER
Turbo air

PRODUCT
AND GET AN

ALPHA LINE

PRODUCT FOR

Half Price!

**50%
OFF**



OR



JUNE 2015

QUALITY SAVINGS

COFFEE MACHINES
FROM BOEMA &
SANREMO



HUGE SAVINGS

ON DISPLAYS FROM
BROMIC, ANVIL & FED



SAVE ON
SANDWICH PRESSES
& MORE BENCHTOP
EQUIPMENT



**SAVE
UPTO 25%**
ON ESWOOD,
HOBART & WASHTEC
DISHWASHERS

MASSIVE SAVINGS

PIE WARMERS &
HEATING CABNETS



PRICES SLASHED

ON COMMERCIAL
UNDERCOUNTER FRIDGES
& FREEZERS



SCAN QR CODE

Scan the QR Code on your
phone to visit our website



WHO ARE WE?



Alpha Catering Equipment is one of Australia's leading suppliers of commercial grade kitchen equipment. With more than four decades of experience in offering customers the best products in the business at the most attractive prices. We provide a full range of equipment allowing our customers to fully fitout their commercial kitchen with the best equipment and supplies from all the leading brands around the world.

Founded in 1975, Alpha Catering Equipment has helped restaurants and cafes all over Sydney outfit their kitchens. We have also assisted many of the biggest chains, franchises, casinos, restaurants, bars, clubs and age care facilities all over Australia. Our highly professional and qualified team can help you determine your needs, design custom fit outs and carry out the entire installation. All you have to do is get in touch and we can help you with a custom fit out that suits your precise requirements and budget.

WHAT MAKES US UNIQUE?

At Alpha Catering Equipment, we have one goal and that is to exceed our customers' expectations. To this end, our company has evolved to become one of the most trusted catering equipment suppliers in Australia, also offering a wide range of services that go beyond the supply of equipment.

OUR SELECTION

With the industry relationships we have developed over the years, we have grown into one of the biggest suppliers of commercial grade kitchen equipment in Australia.

OUR SERVICES

Turning your dream into a reality is our business as we offer a range of services beyond the supply of equipment, including the installing of customising equipment, helping to design your kitchen and even helping you get financing.

OUR PEOPLE

We have a highly skilled team that can walk you through the entire process of purchasing commercial grade kitchen equipment. Not only do we provide advice on the best options for your needs, but we can help you design your kitchen from top to bottom.



Delivery Charges Apply / Prices Exclude GST / Stock availability is current at time of printing.



alphacateringequipment.com.au / Tel: 1300 362 596 / Fax: 02 4731 2099

FOR TERMS AND CONDITIONS PLEASE VISIT THE ALPHA CATERING EQUIPMENT WEBSITE



FITOUTS & CUSTOM FABRICATION



FITOUTS / DESIGN

At Alpha Catering Equipment, our team has extensive experience in designing, producing and installing highly efficient commercial kitchens for some of the biggest venues in Australia, including hotels, casinos, restaurants, clubs and more. With more than four decades of experience in the industry, we understand what a good commercial kitchen is, which is precisely why our designs are so effective.

We will take care of everything, including:

- » The design and fit out of your commercial kitchen
- » Spatial planning, specifications and any technical drawings
- » Inspection and analysis of the site
- » Details regarding the commercial equipment that's necessary
- » Custom fabrication of work surfaces to make sure the agreed-upon design becomes a reality
- » Customisation of refrigeration units
- » Installation of all equipment purchased

CUSTOM FABRICATION

At Alpha Catering Equipment, we have our very own, in-house, custom stainless steel fabrication department. We can design, produce or customise benches, sinks, shelves, refrigeration units and cooking equipment.

Our fabrication team is not only qualified but highly experienced in producing some of the best equipment in Australia.

- » Custom stainless steel benching, sinks and shelving
- » Custom canopy exhaust hoods and extraction systems
- » Custom upright and under counter refrigeration and freezers
- » Custom refrigerated or ambient display units
- » Coolrooms, freezer rooms and store rooms
- » Refrigerated salad and pizza bars



Delivery Charges Apply / Prices Exclude GST / Stock availability is current at time of printing.



alphacateringequipment.com.au / Tel: 1300 362 596 / Fax: 02 4731 2099

FOR TERMS AND CONDITIONS PLEASE VISIT THE ALPHA CATERING EQUIPMENT WEBSITE





STAINLESS STEEL BENCHES



STRONGEST BENCHES IN AUSTRALIA: **ALPHALINE**

- » Alphaline provides you with some of the best products made of commercial food grade 304 stainless steel, which makes them durable, strong and hygienic. They have a large variety of stainless steel work benches, splashback benches, storage shelving, service trolleys, sinks and sink benches, cabinets available.



ALPHALINE

- » 1.2MM THICK 304 GRADE STAINLESS STEEL TABLE

ISLAND BENCHES

FROM **\$199**



ALPHALINE

- » 304 GRADE STAINLESS STEEL
» SPLASHBACK HEIGHT 150 MM

SPLASHBACK BENCHES

FROM **\$235**



ALPHALINE

- » 304 GRADE STAINLESS STEEL
» CASTERS INCLUDED

MOBILE BENCHES

FROM **\$294**



ALPHALINE

- » 1.2MM THICK 304 GRADE STAINLESS STEEL TABLE

CORNER BENCHES

FROM **\$499**



ALPHALINE

- » 304 GRADE STAINLESS STEEL
» BOWL SIZE & POSITIONS

SINGLE SINK BENCHES

FROM **\$665**



ALPHALINE

- » 304 GRADE STAINLESS STEEL

DOUBLE SINK BENCHES

FROM **\$727**



ALPHALINE

- » 304 GRADE STAINLESS STEEL

PIPE WALL SHELVES

FROM **\$99**



ALPHALINE

- » 304 GRADE STAINLESS STEEL

SOLID WALL SHELVES

FROM **\$186**



ALPHALINE

ADDITIONAL SOLID OR TUBE UNDERSHELVING

UNDERSHELVES

FROM **\$76**



ALPHALINE

CASTERS TO SUIT 4 LEG OR 6 LEG STAINLESS STEEL BENCHES

CASTERS

FROM **\$95**

NEED A CUSTOM BENCH?



- » DRAWINGS AVAILABLE
» FREE CONSULTATION
» CUSTOM SOLUTIONS TO SUIT ALL PROJECT APPLICATIONS
» 40+ YEARS EXPERIENCE

CALL 1300 362 596

Delivery Charges Apply / Prices Exclude GST / Stock availability is current at time of printing.



alphacateringequipment.com.au / Tel: 1300 362 596 / Fax: 02 4731 2099

OR TERMS AND CONDITIONS PLEASE VISIT THE ALPHA CATERING EQUIPMENT WEBSITE





STAINLESS STEEL BENCHES



SUPER SAVINGS ON **SIMPLY STAINLESS** BENCHES

- » Simply Stainless are one of the world's leading suppliers of quality modular stainless steel sinks, benches and shelving. Each item is manufactured using 1.2mm stainless steel with a No. 4 brushed finish. Providing a lifetime warranty for its products, the Simply Stainless range is quality, affordable and value for money.



SIMPLY STAINLESS

- » WIDTH: 600MM - 2400MM
» DEPTH: 600MM & 700MM

ISLAND BENCH

FROM **\$468**



SIMPLY STAINLESS

- » WIDTH: 300MM - 2400MM
» DEPTH: 600MM & 700MM

SPLASHBACK BENCHES

FROM **\$413**



SIMPLY STAINLESS

- » CORNER BENCH FOR USE WITH 600 OR 700MM DEPTH BENCHES

CORNER BENCHES

FROM **\$664**



SIMPLY STAINLESS

- » WIDTH: 600MM - 2400MM
» DEPTH: 600MM & 700MM

MOBILE BENCHES

FROM **\$511**



SIMPLY STAINLESS

- » 1.2MM THICK STAINLESS STEEL
» BOWL 450MM X 450MM X 300MM

SINK BENCHES

FROM **\$616**



SIMPLY STAINLESS

- » 1.2MM THICK STAINLESS STEEL
» BOWL 450MM X 450MM X 300MM

DOUBLE SINK BENCHES

FROM **\$1184**



SIMPLY STAINLESS

- » LEFT OR RIGHT HANDED
» BOWL 450MM X 450MM X 300MM

INLET BENCHES

FROM **\$973**



SIMPLY STAINLESS

- » LEFT OR RIGHT HANDED 1.2MM THICK STAINLESS STEEL TOP

OUTLET BENCHES

FROM **\$398**

MORE SIZES AVAILABLE, ASK TODAY!

BENCHES ON A BUDGET!



THE SOURCE FED

ECONOMIC 304 GRADE STAINLESS STEEL TABLES 600 DEEP

ISLAND BENCHES

FROM **\$189**



THE SOURCE FED

ECONOMIC 304 GRADE STAINLESS STEEL TABLES W/SPLASH 600 DEEP

SPLASHBACK BENCHES

FROM **\$314**



THE SOURCE FED

ECONOMIC 304 GRADE STAINLESS STEEL SINGLE SINK BENCH 600 DEEP

SINGLE SINK BENCHES

FROM **\$479**



THE SOURCE FED

ECONOMIC 304 GRADE STAINLESS STEEL DOUBLE SINK BENCH 600MM

DOUBLE SINK BENCHES

FROM **\$784**

Delivery Charges Apply / Prices Exclude GST / Stock availability is current at time of printing.



alphacateringequipment.com.au / Tel: 1300 362 596 / Fax: 02 4731 2099

FOR TERMS AND CONDITIONS PLEASE VISIT THE ALPHA CATERING EQUIPMENT WEBSITE





BEVERAGE EQUIPMENT



FIRST CLASS HAMILTON BEACH BLENDERS!

A.



BBN0250

RRP \$325
SAVE \$52 **\$273**

B.



BBT0650

RRP \$950
SAVE \$152 **\$798**

C.



BBS0850

RRP \$1,850
SAVE \$296 **\$1,554**



A. HAMILTON BEACH BBN0250 RIO-POLYCARBONATE JUG BLENDER

- » Dimensions: 165W 406H 203D mm
- » 1.25 Ltr container
- » 2 speed with pulse

B. HAMILTON BEACH BBT0650 TEMPEST ICE BLENDER

- » Dimensions: 178W 457H 203D mm
- » 2 Lt stackable jug
- » 2 Speed Pulse and jump cycle

C. HAMILTON BEACH BBS0850 SUMMIT IN/ON COUNTER BLENDER

- » Dimensions: 229W 483H 305D mm
- » 2 Lt jug

POWERFULL VITAMIX BLENDERS!

D.



VM10011

RRP \$860
SAVE \$156 **\$704**

E.



VM10199

RRP \$1,027
SAVE \$186 **\$841**

F.



VM50031

RRP \$2,327
SAVE \$421 **\$1,906**



A. VITAMIX VM10011 BLENDER DRINK MACHINE

- » Dimensions: 203W 437H 229D mm
- » 1.4 Ltr stackable container
- » 2 - speed operation

B. VITAMIX VM10199 DRINK MACHINE ADVANCE

- » Dimensions: 203W 449H 229D mm
- » 6 programs with 3 stage ramping
- » 0.9 Ltr high-impact, clear stackable

C. VITAMIX VM50031 ON COUNTER 'THE QUIET ONE'

- » Dimensions: 216W 457H 295D mm
- » Up to 4 times quieter than the competition

FIRST CLASS HAMILTON BEACH BLENDERS!



ROBOT COUPE ULTRA AUTOMATIC JUICER

- » Dimensions: 235W 505H 420D mm
- » High-clearance juice spout 162mm
- » Speed 3000 rpm
- » Delivered with 6.5L translucent pulp container slots neatly under the ejector spout
- » Throughput up to 120kg/h

robot coupe **J80 ULTRA**

RRP \$2,185
SAVE \$218 **\$1,967**



ROBOT COUPE ULTRA AUTOMATIC JUICER

- » Dimensions: 235W 596H 538D mm
- » High-clearance juice spout 256mm
- » Speed 3000 rpm
- » Delivered with 7.2L translucent pulp container slots neatly under the ejector spout
- » Throughput up to 120kg/h

robot coupe **J 100 ULTRA**

RRP \$2,850
SAVE \$285 **\$2,565**

Delivery Charges Apply / Prices Exclude GST / Stock availability is current at time of printing.



alphacateringequipment.com.au / Tel: 1300 362 596 / Fax: 02 4731 2099



BEVERAGE EQUIPMENT



COFFEE MACHINES WITH SOME STYLE!



BOEMA CAFFÈ VOLUMETRIC ESPRESSO MACHINE

- » Dimensions: 490W 525H 515D mm
- » Weight: 48 Kg
- » 1 Group volumetric

CC-1V10A

RRP \$3,500
SAVE \$152 **\$2,940**



SANREMO VERONA S COFFEE MACHINE

- » Dimensions: 820W 610D 590H mm
- » Italian made ultra modern design
- » Available in 2 & 3 groups

VERONA S

RRP \$6,200
SAVE \$136 **\$6,064**



BOEMA SEMI AUTOMATIC ESPRESSO MACHINE

- » Dimensions: 650W 525H 515D mm
- » Weight: 60 Kg
- » Stainless steel back
- » Quick recovery boiler

CC-2S15A

RRP \$4,300
SAVE \$296 **\$3,612**

» Custom Colours available



SANREMO CAPRI DLX COFFEE MACHINE | STD

- » Dimensions: 600W 535H 485D mm
- » Weight: 53 Kg
- » 2 groups - 10L boiler capacity

CAPRI DLX

RRP \$4,150
SAVE \$91 **\$4,059**



BOEMA DELUXE VOLUMETRIC ESPRESSO MACHINE

- » Dimensions: 680W 520H 520D mm
- » Weight: 57 Kg
- » 2 Group volumetric
- » Stainless steel back

D-2V15A

RRP \$5,500
SAVE \$296 **\$4,620**

» Custom Colours available



SANREMO COFFEE MACHINE

- » Dimensions: 780W 580H 590D mm
- » Weight: 63 Kg
- » Italian made ultra modern design
- » Incorporated motor pump

TORINO

RRP \$5,930
SAVE \$130 **\$5,800**

COMMERCIAL HOT WATER URNS ON SALE!



10L

RRP \$180
SAVE \$54 **\$126**



UDS10VP 10L

RRP \$245
SAVE \$27 **\$218**



B1009010 10L

RRP \$278
SAVE \$62 **\$216**



B1070080 10L

RRP \$1,112
SAVE \$226 **\$886**

20L

RRP \$220
SAVE \$67 **\$153**

UDS20VP 20L

RRP \$275
SAVE \$31 **\$244**

B1009020 20L

RRP \$312
SAVE \$69 **\$243**

B1070082 15L

RRP \$1,197
SAVE \$243 **\$954**

30L

RRP \$250
SAVE \$79 **\$171**

UDS30VP 30L

RRP \$304
SAVE \$34 **\$270**

B1009030 30L

RRP \$342
SAVE \$80 **\$262**

B1070084 20L

RRP \$1,400
SAVE \$284 **\$1,116**

B1009040 40L

RRP \$359
SAVE \$80 **\$279**

B1070086 25L

RRP \$1,526
SAVE \$310 **\$1,216**

Delivery Charges Apply / Prices Exclude GST / Stock availability is current at time of printing.



alphacateringequipment.com.au / Tel: 1300 362 596 / Fax: 02 4731 2099





COUNTER TOP EQUIPMENT



HOT DEALS ON PIE WARMERS!



ALPHA LINE

FW50

RRP \$613
SAVE \$178

\$435

- » 50 Pie Capacity
- » Stainless Steel Sides



ROBAND

PM60

RRP \$1,184
SAVE \$176

\$1,008

- » 60 Pie Capacity
- » Stainless Steel Sides



ROBAND

40DT

RRP \$613
SAVE \$91

\$522

- » 40 Pie Capacity
- » Pie warmer with drawers



ANVIL AXIS

PWK0007

RRP \$450
SAVE \$88

\$362

- » Weight: 13.7 Kg
- » Dimensions: 350W 560H 350D mm
- » All stainless steel double wall construction
- » Supplied with three fixed shelves
- » Rear hinged toughened glass door
- » Front fixed glass window

FW100

RRP \$832
SAVE \$272

\$530

- » 100 Pie Capacity
- » Stainless Steel Sides

PM60G

RRP \$1,198
SAVE \$178

\$1,020

- » 60 Pie Capacity
- » Glass Door Sides

80DT

RRP \$832
SAVE \$124

\$708

- » 80 Pie Capacity
- » Pie warmer with drawers

GRILL AND PRESS YOUR SANDWICH WITH THE BEST!



ROBAND

6 SANDWICH GRILL STATION

- » 6 sandwich capacity
- » Smooth plates
- » Aluminium Cooking Plates
- » Cast-in Elements
- » Counter-Balanced Top Plates

ROBAND

GSA610S

RRP \$916
SAVE \$136

\$780



ANVIL AXIS

SINGLE HEAD PANINI PRESS

- » Cooking surface 340mm x 225mm
- » Spring loaded top plate
- » Heat resistant handle
- » Heavy duty cast iron plates

ANVIL AXIS

TSS2000

RRP \$450
SAVE \$88

\$362



ROBAND

8 SANDWICH GRILL STATION

- » Dimensions: 560W x 490D x 220H
- » Weight: 23.00 KG
- » 8 sandwich capacity
- » Smooth Plates
- » Quality dense aluminium cooking

ROBAND

GSA810S

RRP \$1,002
SAVE \$149

\$853



ANVIL AXIS

DOUBLE HEAD PANINI PRESS

- » Cooking surface 480mm x 225mm
- » Independent heat controls
- » Spring loaded top plate
- » Heat resistant handle

ANVIL AXIS

TSS3000

RRP \$895
SAVE \$175

\$720

OPEN YOUR CAFE TO A NEW TOASTER GRILLER



ROBAND

GRILL MAX TOASTER

- » Grill max toaster, 8 slice capacity, 5 min timer
- » 5 minute timer with warning bell
- » Easy-clean removable crumb tray & reflector

ROBAND

GMX810

RRP \$658
SAVE \$98

\$560



ROLLER GRILL

OPEN TOASTER

- » Crumb tray
- » 15 min timer
- » No Pre-heating toaster
- » Grid : 520 x 320 mm
- » Dimensions: 640 x 380 x 330 mm

ROLLER GRILL

TS 1270

RRP \$854
SAVE \$153

\$724

Delivery Charges Apply / Prices Exclude GST / Stock availability is current at time of printing.



alphacateringequipment.com.au / Tel: 1300 362 596 / Fax: 02 4731 2099

FOR TERMS AND CONDITIONS PLEASE VISIT THE ALPHA CATERING EQUIPMENT WEBSITE





COUNTER TOP EQUIPMENT



HOT DEALS ON CHIP FRYERS



ROBAND

5 Litre - F15

RRP \$505
SAVE \$56

\$430

- » 11 min heat up time
- » 7kg thawed chip production/hr
- » 6.5kg frozen chip production/hr



ROBAND

2 x 5 Litre - F25

RRP \$874
SAVE \$100

\$774

- » 11 min heat up time
- » 14kg thawed chip production/hr
- » 13kg frozen chip production/hr



ANVIL AXIS

5 Litre - FFA0001

RRP \$295
SAVE \$58

\$237

- » Single tank; one basket
- » Capacity 5 Litres
- » Power: 2400 Watts; 10A plug
- » Gold Star Warranty
- » Weight: 7 Kg
- » Dimensions: 282W 278H 470D mm



ANVIL AXIS

2 x 5 Litre - FFA0002

RRP \$595
SAVE \$116

\$479

- » Twin tank; two baskets
- » Capacity 2 x 5 Litres
- » Power: 2 x 2400 watts; 2 x 10A plug
- » Gold Star Warranty
- » Weight: 12 Kg
- » Dimensions: 573W 278H 470D mm

8 Litre - F18

RRP \$563
SAVE \$84

\$479

- » 13 min heat up time
- » 10.5kg thawed chip production/hr
- » 10 kg frozen chip production/hr

2 x 8 Litre - F28

RRP \$994
SAVE \$148

\$846

- » 13 min heat up time
- » 21kg thawed chip production/hr
- » 20kg frozen chip production/hr

DID ANYBODY SAY ROLLER GRILL WAFFLES?

A.



SINGLE GES 10

RRP \$1,358
SAVE \$243

\$1,115

B.



SINGLE GES 20

RRP \$1,358
SAVE \$243

\$1,115

C.



SINGLE GES 23

RRP \$1,358
SAVE \$243

\$1,115

ROLLER GRILL



DOUBLE GED 10

RRP \$2,590
SAVE \$463

\$2,127

DOUBLE GED 20

RRP \$2,590
SAVE \$463

\$2,127

D.



SINGLE GES 40

RRP \$1,358
SAVE \$243

\$1,115

E.



SINGLE GES 70

RRP \$1,358
SAVE \$243

\$1,115

F.



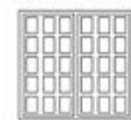
SINGLE GES 80

RRP \$1,358
SAVE \$243

\$1,115

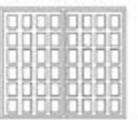
A.

GES 10 (Brussels)



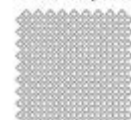
B.

GES 20 (Linge)



D.

GES 40 (Cone)



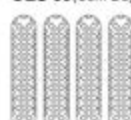
E.

GES 70 (Round)



F.

GES 80 (Corn Dog)



DOUBLE GED 40

RRP \$2,590
SAVE \$463

\$2,127

DOUBLE GED 70

RRP \$2,590
SAVE \$463

\$2,127

DOUBLE GED 80

RRP \$2,590
SAVE \$463

\$2,127

Delivery Charges Apply / Prices Exclude GST / Stock availability is current at time of printing.



alphacateringequipment.com.au / Tel: 1300 362 596 / Fax: 02 4731 2099

FOR TERMS AND CONDITIONS PLEASE VISIT THE ALPHA CATERING EQUIPMENT WEBSITE





DISPLAY EQUIPMENT



GLASS CAKE DISPLAYS FOR EVERYONE!



BROMIC

SQUARE GLASS CAKE DISPLAY W/LED LIGHTING

- » Weight: 232 Kg
- » Dimensions: 900W 1300H 700D mm
- » 337 Litre capacity

CD0900

RRP \$3,350

SAVE \$694

\$2,696



ANVIL AIRE

COLD SQUARE COUNTERTOP SHOWCASE

- » Weight: 90 Kg
- » Dimensions: 900W 790H 540D mm
- » Countertop square showcase 900mm (140lt)
- » Modern style and design

DGV0530

RRP \$2,450

SAVE \$478

\$1,972



ROLLER GRILL

VT 350S CAKE DISPLAY

- » Weight: 128 Kg
- » Dimensions: 700W 1400H 700D mm
- » Power Rating: 10 amp
- » 350 Litre Capacity
- » Stainless Steel
- » Mobile Glass Turn Table

VT 350S

RRP \$5,180

SAVE \$925

\$4,255



TEKNA

COLD SQUARE COUNTERTOP SHOWCASE

- » Dimensions: 670W 1950H 640D
- » Tekna 4401 NFP - H 1950mm
- » Weight: 167KG
- » Capacity: 430L
- » Self closing door

4401 NFP

RRP \$4,972

SAVE \$775

\$4,197



FED

CHILLED DISPLAY CABINET

- » Dimensions: 1500W x 760D x 1250H
- » Weight: 280.00 KG
- » Triple glazed front with heated wire filaments to stop condensation
- » Ambient 40°C & 90% RH

CG150FA-2XB

RRP \$7,029

SAVE \$3,069

\$3,960



FED

BONVUE CHILLED FOOD DISPLAY

- » Dimensions: 900W 1350H 740D mm
- » Chilled food display - 900mm
- » 4 Display levels
- » Temp. range 2 to 5°C
- » Triple glazed front with heated wire filaments

SL830V

RRP \$5,944

SAVE \$2,597

\$3,347



FED

BELLEVUE CHILLED FOOD DISPLAY

- » Dimensions: 900W 1250H 700D mm
- » Weight: 195 Kg
- » Chilled food display - 900mm
- » 3 Display levels
- » Triple glazed front with heated wire filaments

SG090FA-2XB

RRP \$5,484

SAVE \$2,394

\$3,090



FED

BELLEVISTA SQUARE COUNTERTOP DISPLAY

- » Dimensions: 700W 688H 568D mm
- » Three display levels
- » Sliding rear doors
- » Refrigerated 2 to 5°C
- » 120 Litre

STW120

RRP \$2,284

SAVE \$997

\$1,287

Delivery Charges Apply / Prices Exclude GST / Stock availability is current at time of printing.



alphacateringequipment.com.au / Tel: 1300 362 596 / Fax: 02 4731 2099



FOR TERMS AND CONDITIONS PLEASE VISIT THE ALPHA CATERING EQUIPMENT WEBSITE



DISPLAY EQUIPMENT





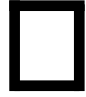
HOW DO YOU LIKE YOUR **HOT FOOD DISPLAY**?



STRAIGHT

CURVED

SQUARE

Brand	Model	Type	Pans Inc	Dimensions	PRICE	RRP	SAVE
Roband	E14RD	 Straight	4	1135 x 420 x 675	\$1,516	\$1,780	\$264
Roband	E16RD		6	1665 x 420 x 675	\$1,737	\$2,039	\$302
Roband	E22RD		4	705 x 615 x 675	\$1,454	\$1,707	\$253
Roband	E23RD		6	1030 x 615 x 675	\$1,557	\$1,828	\$271
Roband	E24RD		8	1355 x 615 x 675	\$1,715	\$2,013	\$298
Roband	E25RD		10	1680 x 615 x 675	\$1,878	\$2,205	\$327
Roband	E26RD		12	2005 x 615 x 675	\$2,016	\$2,367	\$351
Roband	C22RD	 Curved	4	700 x 615 x 750	\$2,129	\$2,499	\$370
Roband	C23RD		6	1030 x 615 x 750	\$2,474	\$2,904	\$430
Roband	C24RD		8	1355 x 615 x 750	\$2,758	\$3,238	\$480
Roband	C25RD		10	1680 x 615 x 750	\$3,054	\$3,586	\$532
Roband	C26RD		12	2005 x 615 x 750	\$3,327	\$3,906	\$579
Roband	S22RD	 Square	4	700 x 615 x 750	\$2,082	\$2,444	\$362
Roband	S23RD		6	1030 x 615 x 750	\$2,360	\$2,771	\$411
Roband	S24RD		8	1355 x 615 x 750	\$2,692	\$3,161	\$469
Roband	S25RD		10	1680 x 615 x 750	\$2,996	\$3,517	\$521
Roband	S26RD		12	2005 x 615 x 750	\$3,263	\$3,830	\$567

SUSHI AND **SEAFOOD** DISPLAYS



A. HNC-120BE HOSHIZAKI SUSHI CABINET

» Dimensions: 1200W 270H 345D

B. HNC-180BE HOSHIZAKI SUSHI CABINET

» Dimensions: 1800W 270H 345D

C. SDS1448 ANVIL SUSHI DISPLAY FRIDGE

» Dimensions: 1424W 251H 395D

D. SDS1776 ANVIL SUSHI DISPLAY FRIDGE

» Dimensions: 1776W 251H 395D

E. RTS-80 FED SUSHI SHOWCASE

» Dimensions: 1174W 287H 426D

F. RTS-132 FED SUSHI SHOWCASE

» Dimensions: 1798W 267H 418D

Delivery Charges Apply / Prices Exclude GST / Stock availability is current at time of printing.



alphacateringequipment.com.au / Tel: 1300 362 596 / Fax: 02 4731 2099

FOR TERMS AND CONDITIONS PLEASE VISIT THE ALPHA CATERING EQUIPMENT WEBSITE





COBRA SPECIALS



CHECK OUT OUR ENTIRE COBRA RANGE!



COBRA CR6D
GAS RANGE STATIC OVEN

- 600mm wide • Stainless steel finish
- 22MJ open burners • 2 or 4 open burner configuration • Griddle options 300mm and 600mm

RRP \$4,244
SAVE \$1,072

\$3,172



COBRA CR9C
4 BURNER COOKTOP RANGE STATIC OVEN WITH GRIDDLE

- 900mm wide • Stainless steel finish
- 22MJ burners • 4 open burner with 300mm griddle

RRP \$5,305
SAVE \$1,340

\$3,965



COBRA CR9D
6 BURNER GAS STATIC OVEN RANGE

- 900mm wide • Stainless steel finish • 22MJ burners • 6 open burners

RRP \$5,305
SAVE \$1,340

\$3,965



COBRA CR9A
2 BURNER COOKTOP RANGE STATIC OVEN WITH GRIDDLE

- 900mm wide • Stainless steel finish
- 3 x 20MJ/hr griddle burner • Cooktop range static oven with 900mm griddle

RRP \$5,305
SAVE \$1,340

\$3,965

SAVE ON COBRA GRIDDLES & STEAMERS!



COBRA C6B
600MM GRIDDLE COOKTOP ON OPEN CABINET BASE

- Size: 600W 1085H 800D mm • 600mm wide
- Stainless steel finish • 2 x 20MJ/hr griddle burner

RRP \$2,881
SAVE \$728

\$2,153



COBRA C9A
900MM GRIDDLE ON OPEN CABINET BASE

- 900mm wide • Stainless steel finish
- 3 x 20MJ/hr griddle burners • 900mm griddle on open cabinet base

RRP \$3,755
SAVE \$949

\$2,806



COBRA CT6
600MM GAS GRIDDLE TOASTER

- 600mm wide • Stainless steel finish
- 2 x 21MJ burners • 12mm thick griddle plate

RRP \$3,776
SAVE \$954

\$2,822



COBRA CMC5
ELECTRIC COMBI STEAMER

- Fits 5 x 1/1 GN Pans • Hand Shower • Electromechanical Controls • Cooking Timer up to 120 minutes • Auto Reversing Fan for even Cooking Results • 830W x 637D x 595H mm

RRP \$6,833
SAVE \$1,725

\$5,108



COBRA CMC7
ELECTRIC COMBI STEAMER

- Fits 7 x 1/1 GN Pans • Hand Shower • Electromechanical Controls • Cooking Timer up to 120 minutes • Auto reversing fan for even Cooking Results • 830W x 637D x 760H mm

RRP \$8,684
SAVE \$2,193

\$6,491



COBRA CMC10
ELECTRIC COMBI STEAMER

- Fits 10 x 1/1 GN Pans • Hand Shower • Electromechanical Controls • Cooking Timer up to 120 minutes • Auto reversing fan for even Cooking Results • 830W x 637D x 970H mm

RRP \$10,878
SAVE \$2,746

\$8,132

Delivery Charges Apply / Prices Exclude GST / Stock availability is current at time of printing.



alphacateringequipment.com.au / Tel: 1300 362 596 / Fax: 02 4731 2099

FOR TERMS AND CONDITIONS PLEASE VISIT THE ALPHA CATERING EQUIPMENT WEBSITE





KITCHEN EQUIPMENT



BLUE SEAL SAPIENS COMBI STEAMERS



BLUE SEAL SAPIENS
ELECTRIC COMBI STEAMER

- » Dimensions: 875W 820H 825D mm
- » Electric Combi Steamer
- » Shelves: 1/1 GN 7
- » Dimensions (mm): 875W x 825D x 820H
- » High visibility display
- » Two speed fan
- » Shelf Spacings 70mm
- » Weight: 117 Kg

Blue Seal Sapiens®

E7SDW

RRP \$14,633

SAVE \$3,695

\$10,938



BLUE SEAL SAPIENS
ELECTRIC COMBI STEAMER

- » Dimensions: 930W 1040H 825D mm
- » Electric Combi Steamer
- » Shelves: 1/1 GN 10
- » Dimensions (mm): 930W x 825D x 1040H
- » High visibility display
- » Two speed fan
- » Shelf Spacings 70mm
- » Weight: 174 Kg

Blue Seal Sapiens®

E10SDW

RRP \$19,656

SAVE \$4,963

\$14,693

TURBOFAN CONVECTION OVENS!



turbofan
CONVECTION OVEN SYSTEMS

TURBOFAN
ELECTRIC CONVECTION OVEN

- » Dimensions: 610W 552H 608D mm
- » 3 x 460mm x 330mm half size sheet pan capacity
- » 70mm tray spacing
- » Single direction low-velocity fan
- » Mechanical thermostat 50-260°C
- » 60 minute timer

E22M3

RRP \$2,070

SAVE \$523

\$1,547

STAND +\$661



turbofan
CONVECTION OVEN SYSTEMS

TURBOFAN
ELECTRIC CONVECTION OVEN

- » Dimensions: 810W 607H 762D mm
- » 3 x 460mm x 660mm full size sheet pan capacity
- » 85mm tray spacing
- » Bi-directional reversing fan system
- » Mechanical thermostat 50-260°C
- » 60 minute timer

E27M3

RRP \$3,526

SAVE \$891

\$2,635

STAND +\$661



turbofan
CONVECTION OVEN SYSTEMS

TURBOFAN
ELECTRIC CONVECTION OVEN

- » Dimensions: 735W 730H 810D mm
- » 4 x 460mm x 660mm full size sheet pan capacity
- » 110mm tray spacing
- » Digital display time and temp. controls
- » High performance bi-directional reversing fan system

E32D4

RRP \$5,897

SAVE \$1,489

\$4,408

STAND +\$661

Delivery Charges Apply / Prices Exclude GST / Stock availability is current at time of printing.



alphacateringequipment.com.au / Tel: 1300 362 596 / Fax: 02 4731 2099

FOR TERMS AND CONDITIONS PLEASE VISIT THE ALPHA CATERING EQUIPMENT WEBSITE





PREPERATION EQUIPMENT



MIXING WITH THE BEST - ROBOT COUPE



ROBOT COUPE BLENDER MIXER

- » Dimensions: 242W 444H 304D mm
- » Weight: 13.2 Kg
- » Single phase
- » Speed 3000 rpm
- » Stainless steel bowl 3.7L

robot coupe

BLIXER 3

RRP \$2,540

SAVE \$260

\$2,280



ROBOT COUPE ULTRA FOOD PROCESSOR

- » Dimensions: 220W 445H 360D mm
- » Weight: 13.45 Kg
- » 2.9L bowl composite bowl including 4 discs
- » 550 watts

R211XL Ultra

RRP \$1,950

SAVE \$200

\$1,750



ROBOT COUPE VEGETABLE PREP MACHINE

- » Dimensions: 350W 590H 320D mm
- » Weight: 19.8 Kg
- » 550 watts
- » Single phase
- » 375 rpm

CL50 E Series

RRP \$2,081

SAVE \$201

\$1,870



ROBOT COUPE TABLE-TOP CUTTER MIXER

- » Dimensions: 350W 590H 320D mm
- » Weight: 19.8 Kg
- » 550 watts
- » Single phase
- » 375 rpm

robot coupe

R2-S

RRP \$1,570

SAVE \$160

\$1,410

A STICK BLENDER TO RULE THEM ALL!



ROBOT COUPE POWER MIXER

- » Size: 78W 430H 78D mm
- » 220 watts
- » Variable speed: 2000-12500 rpm

robot coupe

MINI MP160

RRP \$425

SAVE \$45

\$380



ROBOT COUPE COMPACT POWER MIXER

- » Size: 94W 610H 94D mm
- » Weight: 3.9 Kg
- » Variable speed: 2300 - 9600rpm

robot coupe

CMP250

RRP \$855

SAVE \$85

\$770



ROBOT COUPE ULTRA LARGE POWER MIXER

- » Size: 125W 725H 125D mm
- » Weight: 6.2 Kg
- » One speed 9500rpm

robot coupe

MP350 ULTRA

RRP \$975

SAVE \$100

\$875



DYNAMIC MINI POWER MIXER

- » Weight: 1 Kg
- » Variable speed
- » Detachable
- » 160mm shaft



MX050

RRP \$395

SAVE \$72

\$323



DYNAMIC MASTER PLUS XL POWER MIXER

- » Single Speed: 9,000 rpm
- » Mixing Capacity: 40 - 100L
- » Weight: 3.9 kg



MX003-500

RRP \$1,170

SAVE \$136

\$963



SEMAK VITABLEND COMMERCIAL STICK BLENDER

- » Size: 80W 380H 80D mm
- » 5 litre capacity
- » Strong and durable



VB180

SAVE \$340

SAVE \$54

\$286

Delivery Charges Apply / Prices Exclude GST / Stock availability is current at time of printing.



alphacateringequipment.com.au / Tel: 1300 362 596 / Fax: 02 4731 2099

FOR TERMS AND CONDITIONS PLEASE VISIT THE ALPHA CATERING EQUIPMENT WEBSITE





PREPERATION EQUIPMENT



LATEST PRICES ON ALL MEAT SLICERS!



birko

MEAT SLICER 250MM

- » Dimensions 537W 460D 495H mm
- » Power delivery 10 Amps

1005100

RRP \$794

SAVE \$195

\$612



REININGHAUS

BELT DRIVEN SLICER

- » Dimensions: 420W 370H 520D mm
- » 250mm belt driven slicer

SSR0250

RRP \$925

SAVE \$180

\$745



ROBAND

MEAT SLICER

- » Dimensions: 590W 410H 430D mm
- » 250mm Belt Driven Meat Slicer
- » Heavy Duty

NS250

RRP \$995

SAVE \$193

\$802



ROBAND

HEAVY DUTY MEAT SLICER

- » Dimensions: 630W 460H 440D mm
- » 250mm Belt Driven Meat Slicer
- » Heavy Duty

N250HD

RRP \$1,222

SAVE \$238

\$984



REININGHAUS

BELT DRIVEN SLICER

- » Dimensions: 490W 400H 550D mm
- » 300mm Belt Driven Slicer
- » Aluminium Finger Guard

SSR0300

RRP \$1,250

SAVE \$240

\$1,010



HOBART

MEDIUM DUTY SAFETY SLICER

- » Dimensions: 508W 429H 641D mm
- » 300mm single speed safety slicer

HOBART EDGE

RRP \$3,290

SAVE \$1,468

\$1,822

PLANETARY MIXERS SPECIAL!



KITCHENAID COMMERCIAL STAND MIXER

- » Dimensions: 22.1x35.8x35.3cm (LWH)
- » Maximum kneading capacity: 1.15kg
- » Minimum mixing capacity: 1 egg white
- » Energy efficient 300 watt motor
- » Tilt-up head is easier to use
- » 10 speeds
- » Made in the USA



KSM150

RRP \$799

SAVE \$141

\$658



ROBOT COUPE 5LT PLANETARY MIXER

- » Dimensions: 370 x 470 x 520 [H]; 15 Kg
- » Bowl Capacity 5 Litres
- » 25 YEAR GUARANTEE ON DRIVE MECHANISM
- » Safety guard with integrated safety switching
- » Emergency stop function
- » Stainless steel bowl

SP500

RRP \$965

SAVE \$77

\$888

Delivery Charges Apply / Prices Exclude GST / Stock availability is current at time of printing.



alphacateringequipment.com.au / Tel: 1300 362 596 / Fax: 02 4731 2099

FOR TERMS AND CONDITIONS PLEASE VISIT THE ALPHA CATERING EQUIPMENT WEBSITE





COMMERCIAL REFRIGERATION



HOSHIZAKI

COMMERCIAL UPRIGHT FRIDGE

- » Operating ambient temperature 5°C to 43°C (tropical conditions)
- » Stainless steel interior and exterior
- » Split doors on Upright series
- » Programmable electronic controller and display
- » 4 x lockable caster wheels
- » 546L capacity
- » 1 year warranty

HRE-77MA

RRP \$3,685

SAVE \$1,686

\$1,999

A.



KR25-1

RRP \$3,595
SAVE \$1,293

\$2,302

B.



KR25-1G

RRP \$3,600
SAVE \$770

\$2,803

C.



KR25-2G

RRP \$3,750
SAVE \$743

\$3,007

REFRIGERATOR MANUFACTURER
Turbo air

TURBO AIR UPRIGHT FRIDGES

- A. TOP MOUNT SOLID DOOR FRIDGE**
- » Dimensions: 640Wx 800D x1926H
 - » Capacity: 574L
 - » Weight: 77KG
- B. TOP MOUNT GLASS DOOR FRIDGE**
- » Dimensions: 640Wx 800D x1926H
 - » Capacity: 574L
 - » Weight: 87KG
- C. TOP MOUNT GLASS 2 DOOR FRIDGE**
- » Dimensions: 640Wx 800D x1926H
 - » Capacity: 574L
 - » Weight: 87KG

Delivery Charges Apply / Prices Exclude GST / Stock availability is current at time of printing.



alphacateringequipment.com.au / Tel: 1300 362 596 / Fax: 02 4731 2099

FOR TERMS AND CONDITIONS PLEASE VISIT THE ALPHA CATERING EQUIPMENT WEBSITE





COMMERCIAL REFRIGERATION



COMMERCIAL SOLID 2 DOOR UNDERCOUNTER FREEZER

- » Dimensions: 1500W x 750D x 790~830H mm with legs
- » Weight: 93kg
- » Capacity: 420L
- » Temperature: -23°C to -7°C

FTC-150MDA

RRP \$4,100

SAVE \$1,394

\$2,706



COMMERCIAL SOLID 3 DOOR UNDERCOUNTER FREEZER

- » Dimensions: 1800W x 750D x 790~830H mm with legs
- » Weight: 107kg
- » Capacity: 530L
- » Temperature: -23°C to -7°C

FTC-180MDA

RRP \$4,350

SAVE \$1,483

\$2,867



SOLID 2 DOOR UNDERCOUNTER

- » Dimensions: 1200W x 700D x 860H
- » Capacity: 311L
- » Weight: 84KG

KUR12-2

RRP \$2,500

SAVE \$850

\$2,068



GLASS 2 DOOR UNDERCOUNTER

- » Dimensions: 1200W x 700D x 800H
- » Capacity: 309L
- » Weight: 96KG

KGR12-2

RRP \$3,850

SAVE \$1,386

\$2,464



GLASS 3 DOOR UNDERCOUNTER

- » Dimensions: 1800W x 700D x 800H
- » Capacity: 309L
- » Weight: 127KG

KGR18-3

RRP \$4,975

SAVE \$1,842

\$3,133

SAVE ON FED BACK BARS

A.



B.



C.



SC148G

RRP \$1,374

SAVE \$602

\$772



SC248G

RRP \$1,715

SAVE \$750

\$965



SC316G

RRP \$2,115

SAVE \$924

\$1,191

A. SINGLE DOOR BLACK MAGIC BAR COOLER

- » Dimensions: 600W 857H 535D mm
- » Weight: 52 Kg
- » Double glazed self closing doors

B. TWO DOOR BLACK MAGIC BAR COOLER

- » Dimensions: 900W 857H 535D mm
- » Weight: 75 Kg
- » Double glazed self closing doors

C. THREE DOOR BLACK MAGIC BAR COOLER

- » Dimensions: 1350W 857H 535D mm
- » Weight: 92 Kg
- » Double glazed self closing doors

Delivery Charges Apply / Prices Exclude GST / Stock availability is current at time of printing.



alphacateringequipment.com.au / Tel: 1300 362 596 / Fax: 02 4731 2099

FOR TERMS AND CONDITIONS PLEASE VISIT THE ALPHA CATERING EQUIPMENT WEBSITE





COMMERCIAL REFRIGERATION



ICE ICE BABY, ICE ICE BABY

A.



HOSHIZAKI

KM-30A

RRP \$2,430
SAVE \$894

\$1,536

B.



HOSHIZAKI

IM-65NE-25

RRP \$4,374
SAVE \$1,608

\$2,766

C.



BROMIC
REFRIGERATION

IM0030HSC

RRP \$2,190
SAVE \$679

\$1,511

A. HOSHIZAKI KM-30A ICE MAKER

- » Dimensions: 450W 840H 610D mm
- » Storage: 16kg
- » Production: Up to 36 Kg Per 24hr
- » Crescent Cube size: 37mm x 30mm x 13mm
- » Freeze cycle 30 mins

B. HOSHIZAKI IM-65NE-25 ICE MAKER

- » Dimensions: 633W 930H 506D mm
- » Storage: 26kg
- » Production: Up to 56 Kg Per 24hr
- » Medium Cube size: 25mm x 25mm x 23mm
- » Freeze cycle 22 mins

C. BROMIC IM0030HSC ICE MAKER

- » Dimensions: 376W 637H 550D mm
- » Weight: 37 Kg
- » Produces 27kg per 24 hrs
- » 12 kg storage bin

D.



BROMIC
REFRIGERATION

IM0120FSCW

RRP \$6,290
SAVE \$1,950

\$4,340

E.



Scotsman

ACM46-4

RRP \$1,950
SAVE \$592

\$1,358

F.



Scotsman

ACS 206-A

RRP \$5,400
SAVE \$1,512

\$3,888

D. BROMIC IM0120FSCW ICE MAKER

- » Dimensions: 920W 920H 590D mm
- » Weight: 69 Kg
- » Produces 120kg per 24 hrs
- » 60 kg storage bin

E. SCOTSMAN ACM46-4 ICE MAKER

- » Dimensions: 386W 643H 600D mm
- » Medium gourmet cube
- » 22Kg per 24/hr
- » 9kg storage bin

F. SCOTSMAN ACS 206-A ICE MAKER

- » Dimensions: 1250W 860H 620D mm
- » Small gourmet cube
- » 115Kg per 24/hr
- » 50kg storage bin

COLD PRICES ON BROMIC CHEST FREEZERS!



BROMIC
REFRIGERATION

CF0300ATCG

RRP \$1,390
SAVE \$431

\$959

BROMIC

ANGLE TOP CURVED GLASS CHEST FREEZER - 264 LITRE

- » Size: 1010W 949H 615D mm
- » 264 Litre capacity
- » 4 PVC coated baskets
- » Curved glass chest freezer



BROMIC
REFRIGERATION

CF0500FTSS

RRP \$1,690
SAVE \$524

\$1,166

BROMIC

S/STEEL FLAT TOP CHEST FREEZER - 492 LITRE

- » Size: 1552W 903H 715D mm
- » 492 Litre capacity
- » 1 Lift up lid
- » 3 baskets



BROMIC
REFRIGERATION

CF0200FTFG

RRP \$1,190
SAVE \$369

\$821

BROMIC

FLAT TOP/FLAT GLASS CHEST FREEZER - 191 LITRE

- » Size: 719W 892H 629D mm
- » 191 Litre capacity
- » 2 PVC coated baskets
- » Flat top/flat glass chest freezer



BROMIC
REFRIGERATION

CF0700FTSS

RRP \$1,990
SAVE \$617

\$1,373

BROMIC

S/STEEL FLAT TOP CHEST FREEZER - 675 LITRE

- » Size: 2055W 903H 715D mm
- » 675 Litre capacity
- » 1 Lift up lid
- » 3 baskets

Delivery Charges Apply / Prices Exclude GST / Stock availability is current at time of printing.



alphacateringequipment.com.au / Tel: 1300 362 596 / Fax: 02 4731 2099

FOR TERMS AND CONDITIONS PLEASE VISIT THE ALPHA CATERING EQUIPMENT WEBSITE





COMMERCIAL REFRIGERATION



PIZZA PREPARING WITH TURBO AIR

REFRIGERATOR MANUFACTURER
Turbo air

DOUBLE DOOR PIZZA PREP FRIDGE

- » Weight: 187 Kg
- » Dimensions: 1702W 1069H 820D mm
- » Power Rating: 560W, 6 Amps, 220V/50/1
- » 566 Litre capacity
- » 4 Shelves, 9 pans, 2 hood
- » Refrigerant R-134a
- » Fan Cooling Type
- » Thermostat Control

CTPR-67SD

RRP \$6,660

SAVE \$2,055

\$4,605



REFRIGERATOR MANUFACTURER
Turbo air

2.4M PIZZA PREP FRIDGE

- » Weight: 262 Kg
- » Dimensions: 2362W 1069H 820D mm
- » Power Rating: 660W, 7A, 220V/50/1
- » 878 Litre capacity
- » 6 Shelves, 12 pans, 3 hood
- » Refrigerant R404a
- » Fan Cooling Type
- » Thermostat Control
- » Temps 1 to 5°C

CTPR-93SD

RRP \$7,150

SAVE \$2,002

\$5,148



COUNTERTOP & MERCHANDISERS



BROMIC COUNTERTOP BEVERAGE CHILLER CURVED GLASS

- » Dimensions: 425W 978H 404D mm
- » 80 Litre capacity
- » 4 x LED vertical lights
- » Temp. range +1 to +10°C

CT0080G4BC

RRP \$870

SAVE \$249

\$620

BROMIC
REFRIGERATION



SKOPE LOW SIGN CHILLER

- » Size: 1285W 2015H 820D mm
- » 1020 Litre capacity
- » 4 adjustable + 1 fixed bottom shelf
- » Electrical 230-240v 10A
- » Warranty: 2 years P & L

OD1100

RRP \$7,080

SAVE \$1,303

\$5,777

SKOPE
Refrigeration Limited



FED WHITE COUNTERTOP DISPLAY FRIDGE

- » Size: 428W 1000H 386D mm
- » White single door - 78 Litre
- » Refrigerated 2 to 8°C
- » LED lighting

TCBD78W

RRP \$1,114

SAVE \$487

\$627

THE SOURCE
FED



FED REFRIGERATED OPEN MERCHANDISER

- » Size: 2055W 903H 715D mm
- » 675 Litre capacity
- » 1 Lift up lid
- » 3 baskets

DC-1500N

RRP \$10,539

SAVE \$2,056

\$8,483

THE SOURCE
FED

Delivery Charges Apply / Prices Exclude GST / Stock availability is current at time of printing.



alphacateringequipment.com.au / Tel: 1300 362 596 / Fax: 02 4731 2099

FOR TERMS AND CONDITIONS PLEASE VISIT THE ALPHA CATERING EQUIPMENT WEBSITE





WASHING EQUIPMENT



SAVE ON GLASSWASHERS!

A.



WASHTECH
PROFESSIONAL WATER SYSTEMS

XG

RRP \$3,165
SAVE \$819

\$2,346

B.



HOBART

ECOMAX 402

RRP \$4,170
SAVE \$1,773

\$2,397

C.



ESWOOD

SW400

RRP \$2,830
SAVE \$453

\$2,377

A. WASHTECH XG ECONOMY HIGH EFFICIENCY UNDERCOUNTER GLASSWASHER

- » Dimensions: 445W 775H 510D mm
- » Washes up to 1,000 glasses per hour
- » Quickstart fast one minute cycle

B. HOBART ECOMAX402 SERIES UNDERCOUNTER GLASSWASHER

- » Dimensions: 435W 830H 530D mm
- » Easy-to-use electronic controls with 2 cycles - 90 & 120 sec.
- » Re-circulating & low 2.5 litre rinse volume

C. ESWOOD SW400 DISHWASHER / GLASSWASHER

- » Dimensions: 435W 690H 530D mm
- » 3 wash cycles - 60, 90 & 120 sec
- » 1.9 litres per cycle

SAVE ON UNDERCOUNTER DISHWASHERS!

A.



WASHTECH
PROFESSIONAL WATER SYSTEMS

XU

RRP \$4,520
SAVE \$1,172

\$3,348

B.



HOBART

ECOMAX 502

RRP \$6,410
SAVE \$2,725

\$3,685

C.



ESWOOD

SW500

RRP \$3,860
SAVE \$618

\$3,242

A. WASHTECH XU ECONOMY UNDERCOUNTER DISHWASHER

- » Dimensions: 570W 840H 635D mm
- » Low hot water consumption 2.6L per cycle
- » Cleans up to 600 plates per hour

B. HOBART ECOMAX502 SERIES UNDERCOUNTER DISHWASHER

- » Dimensions: 580W 830H 630D mm
- » Suits 500x500mm racks
- » Simply 'CONNECT & USE'

C. ESWOOD SW500 SMARTWASH PROFESSIONAL UNDER COUNTER DISHWASHER / GLASSWASHER

- » Dimensions: 575W 820H 605D mm
- » Up to 500 x 350mm plates per hour
- » 3 wash cycles of 90, 120 & 180 sec

SAVE ON PASS THROUGH DISHWASHERS!

A.



WASHTECH
PROFESSIONAL WATER SYSTEMS

XP

RRP \$5,900
SAVE \$1,522

\$4,378

B.



HOBART

AM900

RRP \$8,570
SAVE \$3,674

\$4,896

C.



ESWOOD

ES32

RRP \$5,880
SAVE \$1,088

\$4,792

A. WASHTECH XP ECONOMY PASSTHROUGH DISHWASHER

- » Dimensions: 705W 1520H 765D mm
- » 2.6 litres per cycle hot water consumption
- » Cleans up to 1,000 plates per hour
- » 1, 2 and 3 minute wash cycles

B. HOBART AM900 ELECTRONIC HOOD TYPE DISHWASHER

- » Dimensions: 711W 1510H 815D mm
- » Hood-type dishwasher
- » Cycle times: 60 / 90 / 180 seconds
- » EASY-CLEAN concept

C. ESWOOD ES32 PASS THROUGH DISHWASHER

- » Dimensions: 595W 1375H 600D mm
- » 700 Pieces per hour
- » 30 litre tank capacity
- » 85/115 sec wash cycle
- » Rinse pump fitted as standard
- » Stainless steel construction

Delivery Charges Apply / Prices Exclude GST / Stock availability is current at time of printing.



alphacateringequipment.com.au / Tel: 1300 362 596 / Fax: 02 4731 2099

FOR TERMS AND CONDITIONS PLEASE VISIT THE ALPHA CATERING EQUIPMENT WEBSITE





WASHING EQUIPMENT



PRE RINCE SPRAYS & TAPS

A.



T-3M53007-C

RRP \$600
SAVE \$40

\$560

B.



ACQUA

AQD1200

RRP \$696
SAVE \$119

\$577

C.



JET

JS007

RRP \$895
SAVE \$165

\$730

D.



yellow

YH041

RRP \$1,190
SAVE \$205

\$985

E.



yellow

YW031

RRP \$1,390
SAVE \$239

\$1,151

F.



yellow

Y745P

RRP \$240
SAVE \$41

\$199

A. 3MONKEEZ CAFE DUAL HOB MOUNT PRE RINSE UNIT

- » Dual Hob Tap Body Includes Inlet Hoses
- » 1/2 Turn Rising Spindles
- » High Water Efficiency With a 6 Star 3.5LPM Trigger Valve

B. ACQUA LINE NEW GENERATION PRE-RINSE

- » 6 Star rated spray valve
- » Fitted with 200mm swing faucet with end-mounted control
- » Watermarked approved & Wels rated
- » Max. temp. 80°C

C. JETSPRAY PRE-RINSE ARM ASSEMBLY

- » Cutting edge design
- » Australian quality built in
- » Reliable high performance unit
- » Conforming to AS/NZS6400-2005

D. YELLOW DECK MOUNTED PRE RINSE

- » Deck Mounted Pre Rinse Assembly
- » Complete With Wall Bracket

E. YELLOW WALL MOUNTED PRE RINSE

- » Wall Mounted Pre Rinse Assembly
- » Complete With Wall Bracket

F. YELLOW TIME FLOW TAP - 7 SECONDS

- » Australian Watermark Approved Product
- » Time Flow Tap - 7 Seconds

3MONKEEZ HAND BASINS!



3MONKEEZ KNEE OPERATED HAND BASIN

- » Dimensions: 503 x 400 x 229 mm
- » Capacity: 11.5 litres
- » No Valve
- » 304 grade stainless steel
- » 50mm splash back
- » 40mm outlet

AB-KNEEHB-RT



RRP \$1,000
SAVE \$70

\$930



3MONKEEZ KNEE OPERATED ROUND HAND BASIN

- » Dimensions: 360 x 365 x 225 mm
- » Capacity: 6.3 litres
- » Tempering valve
- » 304 grade stainless steel
- » 50mm splash back
- » 40mm outlet

AB-KNEEHB-1



RRP \$750
SAVE \$90

\$660



3MONKEEZ KNEE OPERATED ROUND HAND BASIN

- » Dimensions: 360 x 365 x 225 mm
- » Capacity: 6.3 litres
- » Thermostatic mixing valve
- » 304 grade stainless steel
- » 50mm splash back
- » 40mm outlet

AB-KNEEHB-RTMV



RRP \$1,150
SAVE \$90

\$1,060



3MONKEEZ KNEE OPERATED HAND BASIN

- » Dimensions: 503 x 400 x 229 mm
- » Capacity: 11.5 litres
- » Thermostatic mixing valve
- » 304 grade stainless steel
- » 50mm splash back
- » 40mm outlet

AB-KNEEHB-RTMV



RRP \$1,050
SAVE \$100

\$950

Delivery Charges Apply / Prices Exclude GST / Stock availability is current at time of printing.



alphacateringequipment.com.au / Tel: 1300 362 596 / Fax: 02 4731 2099

FOR TERMS AND CONDITIONS PLEASE VISIT THE ALPHA CATERING EQUIPMENT WEBSITE





TROLLEYS



BEST PRICES ON STAINLESS STEEL TROLLEYS



ALPHALINE

2 TIER PLASTIC SERVICE TROLLEYS

» Size: 750W 460W 915H

ALPHALINE

KTL-707E

RRP \$115

SAVE \$11

\$104

ALPHALINE

3 TIER PLASTIC SERVICE TROLLEYS

» Size: 750W 460W 915H

ALPHALINE

KTL-707F

RRP \$144

SAVE \$14

\$130

ALPHALINE

4 TIER PLASTIC SERVICE TROLLEYS

» Size: 750W 460W 915H

ALPHALINE

KTL-707G

RRP \$180

SAVE \$18

\$162

BEST PRICES ON STAINLESS STEEL TROLLEYS



ALPHALINE

STAINLESS STEEL 2 TEIR TROLLEY

- » 950W x 500D x 950H mm
- » Stainless steel shelves & frame
- » Four castors (two with brake)
- » 150 kg load

ALPHALINE

GCI-PRD

RRP \$164

SAVE \$17

\$147



F.E.D.

STAINLESS STEEL 2 TEIR TROLLEY

- » 855W 925H 535D mm
- » Stainless steel shelves & frame
- » Four castors (two with brake)
- » 150 kg load

THE SOURCE
FED
YOUR EQUIPMENT & SUPPLY SOURCE

SST-2

RRP \$264

SAVE \$116

\$148



ALPHALINE

STAINLESS STEEL 3 TEIR TROLLEY

- » 950W x 500D x 950H
- » Stainless steel shelves & frame
- » Four castors (two with brake)
- » 150 kg load

ALPHALINE

GCI-PRD

RRP \$186

SAVE \$19

\$167



F.E.D.

STAINLESS STEEL 3 TEIR TROLLEY

- » 855W 925H 535D mm
- » Stainless steel shelves & frame
- » Four castors (two with brake)
- » 150 kg load

THE SOURCE
FED
YOUR EQUIPMENT & SUPPLY SOURCE

SST-3

RRP \$334

SAVE \$146

\$188



ALPHALINE

STAINLESS STEEL DEEP BASIN TROLLEY

- » 950W x 500D x 950H
- » Stainless steel shelves & frame
- » Four castors (two with brake)
- » 150 kg load

ALPHALINE

GCI-BR

RRP \$184

SAVE \$19

\$165



F.E.D.

STAINLESS STEEL DEEP BASIN TROLLEY

- » 800W 900H 500D mm
- » Four castors (two with brake)
- » Stainless steel shelves & frame
- » 150 kg load

THE SOURCE
FED
YOUR EQUIPMENT & SUPPLY SOURCE

STB-2

RRP \$424

SAVE \$187

\$237

Delivery Charges Apply / Prices Exclude GST / Stock availability is current at time of printing.



alphacateringequipment.com.au / Tel: 1300 362 596 / Fax: 02 4731 2099

FOR TERMS AND CONDITIONS PLEASE VISIT THE ALPHA CATERING EQUIPMENT WEBSITE





SHELVING



EPOXY COATED WIRE SHELVING

» Our heavy duty shelving do not rust at all. Can be used in both wet and dry areas. The shelves can be adjusted at a 100mm height without disassembling the unit. It has been designed for easy-assembling and does not require any special tools.

Code	L	D	H	PRICE	RRP	SAVE
GPC-PSU361471	910	355	1800	\$265.50	\$295.00	\$29.50
GPC-PSU421472	1060	355	1800	\$306.00	\$340.00	\$34.00
GPC-PSU481473	1220	355	1800	\$337.50	\$375.00	\$37.50
GPC-PSU541474	1370	355	1800	\$363.60	\$404.00	\$40.40
GPC-PSU601475	1525	355	1800	\$392.40	\$436.00	\$43.60
GPC-PSU721476	1825	355	1800	\$450.90	\$501.00	\$50.10
GPC-PSU361871	910	455	1800	\$274.50	\$305.00	\$30.50
GPC-PSU421872	1060	455	1800	\$317.70	\$353.00	\$35.30
GPC-PSU481873	1220	455	1800	\$351.00	\$390.00	\$39.00
GPC-PSU541874	1370	455	1800	\$378.00	\$420.00	\$42.00
GPC-PSU601875	1525	455	1800	\$408.60	\$454.00	\$45.40
GPC-PSU721876	1825	455	1800	\$470.70	\$523.00	\$52.30
GPC-PSU362471	910	610	1800	\$346.50	\$385.00	\$38.50
GPC-PSU422472	1060	610	1800	\$384.30	\$427.00	\$42.70
GPC-PSU482473	1220	610	1800	\$430.20	\$478.00	\$47.80
GPC-PSU542474	1370	610	1800	\$465.30	\$517.00	\$51.70
GPC-PSU602475	1525	610	1800	\$501.30	\$557.00	\$55.70
GPC-PSU722476	1825	610	1800	\$576.90	\$641.00	\$64.10



HEAVY DUTY POLYMAT SHELVING

» Our epoxy coated wire shelving has a polyester coating for extra moisture protection. Each shelf can hold a weight of 150kgs when evenly distributed. Shelf height can be adjusted to 25mm increment. They are all flat packed and easy to assemble. The open wire design minimizes dust accumulation and allows free circulation of air.

Code	L	D	H	PRICE	RRP	SAVE
4T1424PEW	610	355	1800	\$124.20	\$138.00	\$13.80
4T1430PEW	760	355	1800	\$128.70	\$143.00	\$14.30
4T1436PEW	910	355	1800	\$132.30	\$147.00	\$14.70
4T1442PEW	1060	355	1800	\$149.40	\$166.00	\$16.60
4T1448PEW	1220	355	1800	\$159.30	\$177.00	\$17.70
4T1460PEW	1525	355	1800	\$178.20	\$198.00	\$19.80
4T1472PEW	1825	355	1800	\$187.20	\$208.00	\$20.80
4T1824PEW	610	455	1800	\$134.10	\$149.00	\$14.90
4T1830PEW	760	455	1800	\$138.60	\$154.00	\$15.40
4T1836PEW	910	455	1800	\$143.10	\$159.00	\$15.90
4T1842PEW	1060	455	1800	\$160.20	\$178.00	\$17.80
4T1848PEW	1220	455	1800	\$170.10	\$189.00	\$18.90
4T1860PEW	1525	455	1800	\$188.10	\$209.00	\$20.90
4T1872PEW	1825	455	1800	\$197.10	\$219.00	\$21.90
4T2424PEW	610	610	1800	\$143.10	\$159.00	\$15.90
4T2430PEW	760	610	1800	\$159.30	\$177.00	\$17.70
4T2436PEW	910	610	1800	\$170.10	\$189.00	\$18.90
4T2442PEW	1060	610	1800	\$179.10	\$199.00	\$19.90
4T2448PEW	1220	610	1800	\$188.10	\$209.00	\$20.90
4T2460PEW	1525	610	1800	\$224.10	\$249.00	\$24.90
4T2472PEW	1825	610	1800	\$278.10	\$309.00	\$30.90

Delivery Charges Apply / Prices Exclude GST / Stock availability is current at time of printing.



alphacateringequipment.com.au / Tel: 1300 362 596 / Fax: 02 4731 2099

FOR TERMS AND CONDITIONS PLEASE VISIT THE ALPHA CATERING EQUIPMENT WEBSITE



ALPHA

CATERING EQUIPMENT

CALL US FOR A QUOTE
1300 362 596



Alpha Catering Equipment is **Australias largest** online store and supplier of **Commercial Catering Equipment**.



ALPHA

CATERING EQUIPMENT

Headoffice & Showroom

2060-2062 Castlereagh Road

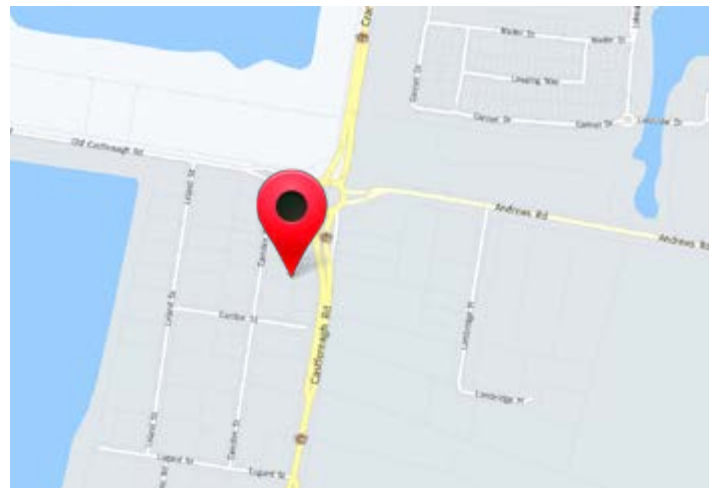
Penrith, NSW 2750

Phone: 02 4732 1830

Email: sales@alphace.com.au

Warehouse Locations

Sydney, Melbourne, Brisbane



Delivery Charges Apply / Prices Exclude GST / Stock availability is current at time of printing.



alphacateringequipment.com.au / Tel: 1300 362 596 / Fax: 02 4731 2099

FOR TERMS AND CONDITIONS PLEASE VISIT THE ALPHA CATERING EQUIPMENT WEBSITE

