

Family owned and led since 1902

From a small regional town, Ray White has grown to become the largest real estate agency across Australia and New Zealand. With market leadership in Indonesia and offices in the UAE, Hong Kong, China, the Middle East and the United States of America.

Established in 1902, when the company's namesake established a stock and station agency in Crows Nest, Queensland.

After more than 20 successful years in business in Crows Nest, Ray decided to migrate his to Brisbane for his children's education. Surviving The Great Depression and World War II, Ray White has become the Australia's first comprehensive real estate agency.

In 1956 Ray White's youngest son, Alan took the helm. Under his leadership the company flourished, establishing more branches in the 1960s.

In 1976, Brian White, Ray's grandson became the managing director of the company and is still the chairman today.. By 1982, the company had 60 branch offices throughout Queensland; motivating Brian to move into franchising.

The first franchised office joined the group in 1982 in Capalaba, east of Brisbane. Since then, Ray White has grown rapidly across all states and territories of Australia. Representing all major metropolitan and regional centres.

In 1993, Ray White crossed the Tasman to New Zealand establishing a widespread network of offices across the North and South Islands.

Two years later in 1995, Ray White commenced operations in Indonesia where we are now the leading real estate franchise with more than 170 offices.

In 2010, the group continued its expansion to India and China. This provides a valuable link between it's networks in Australia and New Zealand with the developing economies in the world.

Today, Ray White is the largest real estate group in Australasia, with more than 1000 offices and over 12,000 members. Selling more than \$45 billion worth of real estate annually and managing more than 200,000 rental properties. The company is being led by the fourth generation of the White family.

1902

Ray White open his first office in Crows Nest township

1922

First city office opened in Brisbane

1945

Alan White joins the business, the 2nd generation

1963

Brian White joins the business, the 3rd generation

1975

Ray White Group achieves its first \$100M year

1989

Ray White Group opens its 100th office

1994

The company expands into New Zealand

1995

Ray White Financial services is founded, later becomes Loan Market

2008

Ray White Group opens its 1000th office

2015

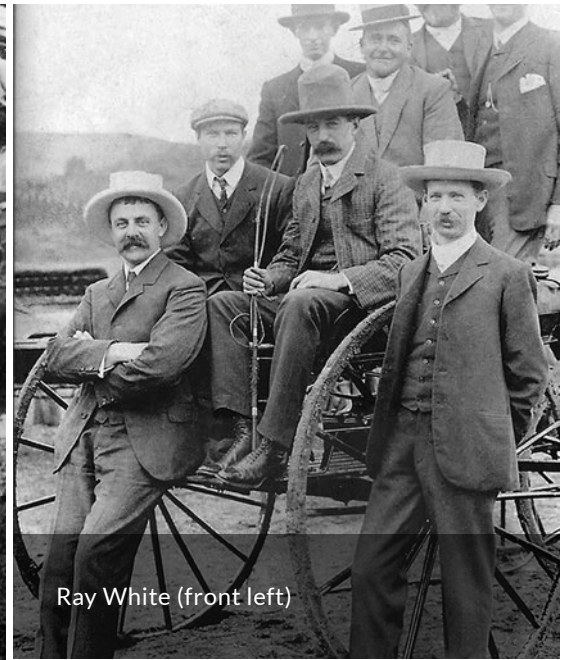
Ray White wins the EY International Family Business award



Brian, Sam, Dan and Ben White



Alan White conducting an auction with sons Paul and Brian in the 1950's



Ray White (front left)



If you travel to Crows Nest, a small town in the Darling Downs 132km west of Brisbane, you can still see the original shed where Ray began his auction business in 1902.