



**Rinnai**

Hot Water

Experience Our Innovation



## CONTENTS

### RANGE OVERVIEW

There are many types of hot water systems available for Australian homes. Whether relating to safety, convenience, available space, environmental needs or ongoing running costs, Rinnai will have a system that suits.

04 Range Overview - Hot Water

05 Important Considerations

### CONTINUOUS FLOW

06 INFINITY Continuous Flow

08 INFINITY Smartstart®

09 INFINITY Enviro

10 Water Controllers

### SOLAR

Solar Hot Water is not only environmentally responsible but is now very affordable.

12 Solar Hot Water

14 Range Overview - Solar

15 The Range at a glance

16 Accessories

17 Specifications

18 Warranty

19 Additional Rinnai Appliances

## Experience Our Innovation

For 40 years Australians have been enjoying the comfort, convenience and reliability of Rinnai gas appliances. Our innovative products are designed with the environment in mind, with low emission technology and high efficiencies, as well as a host of other great features.

Rinnai is committed to ongoing innovation - delivering efficient, well designed and engineered lifestyle solutions offering a host of benefits including versatility, safety, control, water conservation as well as guaranteed reliability. Backed with extensive warranty's and after sales service teams, Rinnai is proud to be the No.1 choice for Continuous Flow Hot water in Australia. In addition, our innovative range of Solar Hot Water Systems boast market leading efficiencies that ultimately enjoy higher Government rebates.

Through innovation, we will endeavour to continue offering superior ranges of home appliances that provide a clear insight into what the future holds for Australian homes.

### The Environment

Gas is one of the most greenhouse friendly fuel sources available. By choosing a Rinnai Gas Hot Water System or Gas Boosted Solar System you can make a difference. Even Electric Boosted Solar hot water has substantial benefits and assists with the reduction of our carbon footprint.

Independent tests are used to give Energy Star Ratings to all gas Hot Water Systems - the more stars the better. The Rinnai Continuous Flow INFINITY ranges are highly efficient - all tested to 5+ Stars out of a maximum of 6. In addition, our most efficient INFINITY 26 Enviro model has been awarded the equivalent of 7 Stars! Solar systems are not measured with stars but are awarded Renewable Energy Certificates (RECs) based on measured environmental savings. Again Rinnai systems lead the way being amongst the highest in the industry.

### Water Wastage

Water conservation is top of mind in almost every city, town & community in Australia today. Hot water and more specifically showering & bathing, contributes the highest proportion of water used in most households. Gas Continuous Flow systems such as the popular Rinnai INFINITY have been designed to minimise wastage with faster start-ups and the ability to operate at lower flow rates, and are more compatible with water efficient fixtures such as shower roses and basin outlets.

The physical design of the home can also have an influence over the type of hot water system best for that application and where it should be installed. The length of pipe run from the hot water system to any hot water tap directly influences how much water is potentially wasted prior to use. Where possible, have your installer locate your hot water system as close as practical to the most frequently used hot water tap - most likely the kitchen, but with consideration to supplying the bathrooms as well.

If using a Continuous Flow System such as the Rinnai INFINITY, their small compact size allows more flexibility than traditional storage cylinders. In addition, Rinnai have the Smartstart® pre-heat system that pre-heats the water in the pipes before you turn on the tap, literally saving thousands of litres of precious water. See page 8 and 16 for further details.



There are many types of hot water systems available for Australian homes. Rinnai hot water systems bring you the latest advanced technologies that provide you with choices that can meet individual needs. Whether relating to safety, convenience, available space, environmental needs or ongoing running costs, Rinnai will have a system that suits.

### **Temperature Controlled Gas Continuous Flow**

The Rinnai INFINITY - a unit that only heats the water when you need it. As a tap is turned on, the unit senses the flow and begins to heat the water instantaneously. Highly efficient and compact, these units can also be temperature controlled for added safety & convenience. In addition they are literally 'continuous flow' and will never run out of hot water – even if you are last in the shower!

### **Solar Boosted Gas Continuous Flow**

These systems are designed to utilise the energy from the sun via Solar Collectors (panels) mounted on the roof. Cold water passes through pipes and is heated by the sun and returned to a storage cylinder located either on the roof or situated on the ground. Utilising the same technology as the Rinnai INFINITY, a Continuous Flow gas boost system is incorporated for days that have low solar gain. Rinnai Gas Boosted Solar Systems are highly efficient with substantial Government rebates applying for most domestic installations.

### **Electric Boosted Solar Mains Pressure**

Similar to the gas boosted unit, an electric boosted system has an element in the cylinder to provide boosting on lower solar gain days. Whilst not as efficient as a gas boosted system, they are still an environmentally friendly alternative to a standard electric storage cylinder. They are often the system of choice where gas is not available. Rinnai Electric Boosted Solar Systems also enjoy substantial Government rebates applying for most domestic installations.

## Correct Sizing

### **Number of occupants**

The number of users in any installation is extremely important as it directly affects the size of unit that is required. Nobody likes a cold shower so it is vital that any system is correctly sized for an application. Please talk to your Rinnai Hot Water Specialist about the best model to suit your needs.

**Below we have outlined some of the considerations for various Rinnai Hot Water Systems:**

#### **Gas Continuous Flow – Rinnai INFINITY**

- Sizing Parameter – Number of shower outlets operating together
- Will not run out of Hot Water
- Size of the unit selected needs to consider how many showers/outlets may be operating at once
- An undersized unit may restrict the flow rate if multiple outlets are operated at once

#### **Gas Boosted Solar – Rinnai Prestige & Rinnai Sunmaster**

- Sizing Parameter – Number of Bedrooms in the home
- The storage Cylinder capacity determines the available solar heated hot water
- Gas booster is always available as a backup, therefore hot water will never run out
- Undersized system could mean the system is relying on the gas booster more often – increasing running costs
- Insufficient solar panels would also reduce the solar gain causing reliance on the gas booster

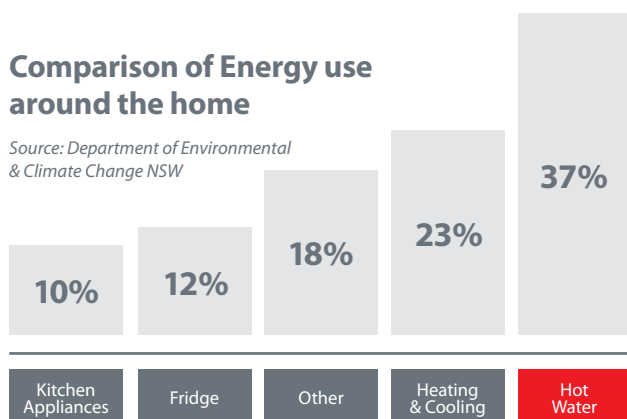
#### **Electric Boosted Solar - Rinnai Prestige & Rinnai Sunmaster**

- Sizing Parameter – Number of Bedrooms in the home
- The tank size determines the amount of hot water available regardless of whether solar generated or electric boosted
- Hot water can run out if not correctly sized
- Choice of electricity tariff affects availability of re-heated water:
  - Normal (Peak) tariff continually re-heats
  - Off-peak will generally not re-heat until overnight



## Comparison of Energy use around the home

Source: Department of Environmental & Climate Change NSW



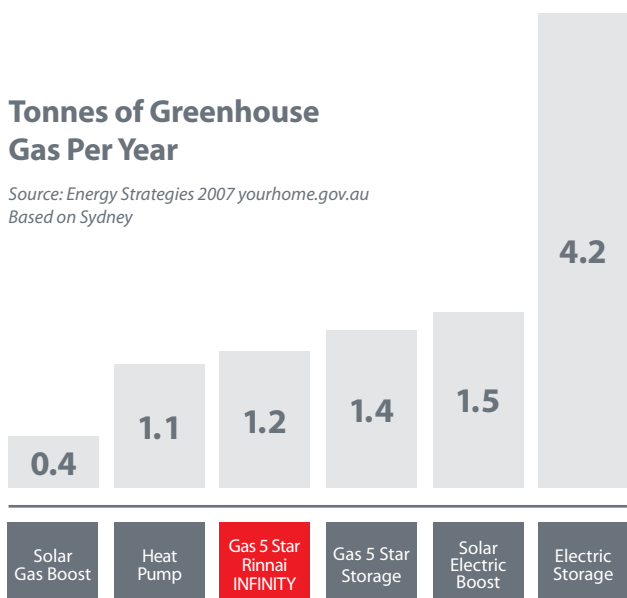
### Household Energy Use

Hot Water systems in general are the largest users of energy in most Australian homes, so it's important to consider all the factors before selecting a hot water system. High efficiency, correctly sized hot water systems can directly lower the running costs of a family.

The table opposite indicates where energy is typically used in an average household. Naturally this varies from State to State and even house to house, but the common factor is that hot water will nearly always be the largest consumer of energy.

## Tonnes of Greenhouse Gas Per Year

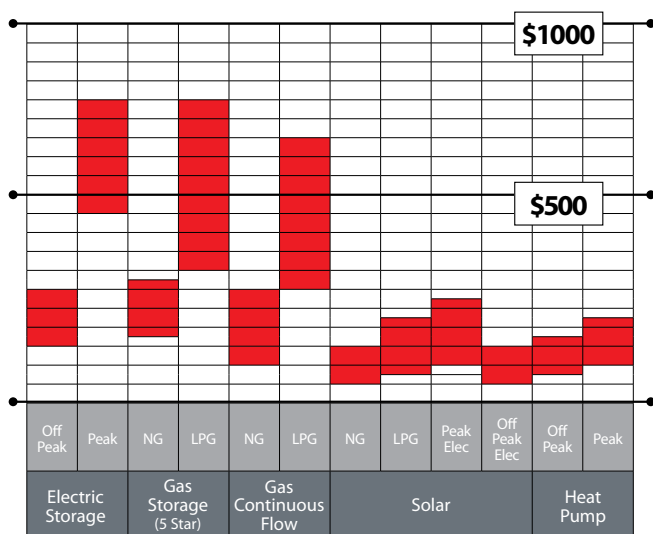
Source: Energy Strategies 2007 yourhome.gov.au  
Based on Sydney



### Greenhouse Gas Emissions

Increased levels of greenhouse gases have been identified as one of the major contributors to the problem of global warming, so anything that can help reduce our carbon footprint, is beneficial to the environment.

When purchasing a new hot water system, many people simply put in what was there before without considering the environmental impact of their decision. The charts clearly show that if you make an informed decision and think about the consequences to the environment, you in fact have the opportunity to make a difference. The purchase and installation of Rinnai hot water systems and in particular Gas Boosted Solar are a clear step in the right direction.



## Running Costs Per Year

### Running Costs

Running Costs for Hot Water vary depending on the type of system installed (Continuous Flow or Storage Cylinder) and the fuel used (Electricity, Gas or Solar).

The Table (opposite) gives an indication of the annual running costs of various common hot water systems used in Australia. As hot water use varies between households and climates, this graph will change accordingly. We have calculated these figures using a family of four, having one five minute shower a day each and using cold water for clothes washing. It is a comparative guideline only, based on various government websites.

**Rinnai**





# Rinnai INFINITY Continuous Flow

the original and still No.1

Rinnai revolutionised the Australian water heating market in the early 90's when it launched the first fully electronic Gas Continuous Flow Hot Water System. Appropriately named the Rinnai INFINITY because it never ran out of hot water, today systems are even more sophisticated – designed with the environment in mind with low emission burners, high efficiencies and low flow rates compatible with water saving (WELS) outlets and showers.

## How Continuous Flow Works

The Rinnai INFINITY heats water as it passes through the unit, which means you are only using energy when you turn the tap on. It is an extremely energy efficient choice as the water is only heated when required, lowering running costs and greenhouse gas emissions substantially. Add to this the convenience of precise water and temperature control with the installation of Water Controllers and it's compact size, which allows it to be installed almost anywhere, and you have the most technologically advanced hot water system available today!

## Superior Technology

- Quality Japanese design and manufacturing
- Precise temperature control for safety & convenience
- Compact design allowing installation flexibility
- Suitable for higher incoming (ambient) water temperatures
- Compatible with low flow rated shower fixtures (3 Star - 7.0 to 9.0 l/min)
- Ability to operate 2 showers at once
- Ability to install up to 4 Water Controllers (*see page 11 for further information*)
- The comfort that Antifrost is standard on all external models
- 12 year warranty on the heat exchanger

## The choice is yours...

Rinnai has the largest selection of models to suit both new & existing Australian homes. Fundamentally there are 3 types of Rinnai INFINITY continuous flow hot water systems, each with innovative features allowing choice based on your personal preferences:

1. **High Efficiency Models** - Our classic range of models (*see below*)
2. **High Efficiency Water Saver Model** - Includes a pre-heat system to reduce water wastage (*see page 8*)
3. **Highest Efficiency Models** - Lowest running costs and environmental impact (*see page 9*)

## High Efficiency Models

The Rinnai INFINITY classic models boast a host of fantastic features:

- Proudly Australia's first Continuous Flow Hot Water System
- High efficiency 5.0+ Star ratings
- Full range of sizes from 16 to 32 litres including an Internal 26 model
- Fully accessorised with multiple installation options (*see page 16 for details*)
- Available in both 50°C & 60°C - talk to your installer about which is best for your home design

### Rinnai INFINITY 26Plus

- High efficiency 5.2 Star rating
- Slimline casing with a stylish silver metallic finish
- Increased maximum flow rate of 30 litres
- Inbuilt Status Monitor (maintenance)
- Available in 60°C preset only



INFINITY 16



INFINITY 26



INFINITY 26 Internal

### Models

- INFINITY External 16, 20, 26, 26Plus and 32 Litre
- INFINITY Internal (26 Litres only)
- INFINITY 26 Smartstart®
- INFINITY 26 and 32 Enviro

### Colours

**White** - INFINITY 16, 20, 26, 26i, 26 Smartstart and 32  
**Silver Metallic** - INFINITY 26Plus and Enviro Models

### Gas Types

All models are available in both Natural Gas and LPG

# Rinnai

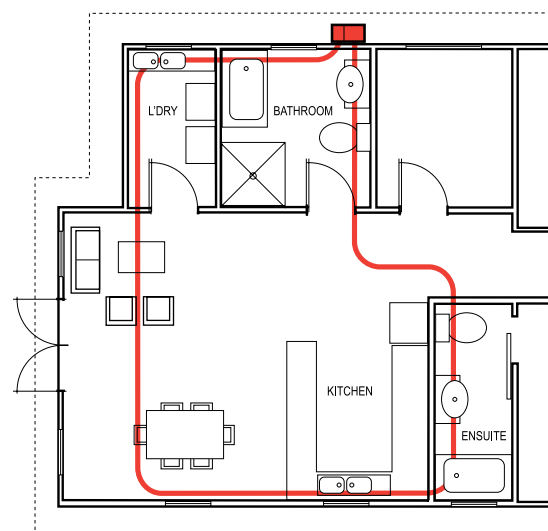


## High Efficiency Water Saver Model

### Rinnai INFINITY 26 Smartstart®

Introducing Australia's first dedicated 26 litre 'Water Saving' hot water system. It has all the great features of the standard Rinnai INFINITY Continuous Flow, with the addition of a circulating pump to pre-heat the water in the pipes. This may take a minute or two depending on the size of your home, but will help you save literally tens of thousands of litres of water over the life of your hot water system.

- High efficiency hot water with an inbuilt hot water circulation system
- Pre-heats the water in the pipes before you turn on the hot tap
- The Smartstart® is an 'on-demand' pump system that only operates when required and automatically shuts off, further saving energy
- It is activated in any room that has a Water Controller installed
- Saves literally thousands of litres of water often flushed down the drain
- Supplied as 50°C preset temperature
- 12 year warranty on the Heat Exchanger



For further information on the operation of the Smartstart®, please see page 16



The Rinnai logo is displayed in white text on a red rectangular background.

## Highest Efficiency Models

### Rinnai INFINITY Enviro

Introducing the most energy efficient system on the Australian market - the Rinnai INFINITY Enviro. Technically they are known as "condensing units", but what is important is that they use considerably less gas to produce the same quantity of hot water as standard systems.

- Australia's first **7 Star** equivalent Hot Water System – 26 Litre
- Uses less gas, substantially reducing running costs
- Around 1/6th of the Greenhouse Emissions of a standard electric hot water
- Also available as a 32 Litre – **6.8 Star** equivalent
- Supplied as 60°C preset temperature
- 12 year warranty on the Heat Exchanger



**Rinnai**





## Get the most out of your Rinnai INFINITY with Water Controllers

To experience all the benefits of Continuous Flow hot water systems, Rinnai strongly recommend installing Water Controllers with all models. Rinnai's Controllers enable you to simply set your desired temperature, turn on the hot tap and enjoy... no more juggling the hot and cold taps and of course this also saves water.

### Temperature Fluctuations

Continuous Flow water heaters like all types of water heaters can experience temperature fluctuations when other taps are turned on. Water controllers avoid this by maintaining an exact temperature even when other taps are used or a toilet is flushed.

### Safety

The installation of Water Controllers allow you to select the exact temperature you need, reducing the chance of scalds. Our Deluxe Controllers have the added feature of an automatic bath fill which stops the water flow at your desired level. This also means that young children can no longer play with the hot tap because no water will come from it!

### Ease of Use

Simply select the temperature you want and turn on the hot tap. Not only can you experience total control in the bathroom, but unlike other Continuous Flow hot water systems, you can have up to four controllers... a controller for the Bathroom, Kitchen, Ensuite and even the Laundry.

### Extended Warranty

Rinnai INFINITY installations with 2 or more Water Controllers receive an extended parts & labour warranty.

## Types of Rinnai Water Controllers

From a functionality point of view, Rinnai have 2 types of Controllers

### Universal Controllers

(Both Wireless & Hard-wired versions) with the following functions:

- Precise temperature control
- Room (priority) transfer
- Smartstart® preheat system functions
- Child Lock (Wireless only).

### Deluxe Controllers

(Hard-wired only) with all of the functions of the Universal model with addition of:

- Master Controller usually installed in the Kitchen
- Separate Bathroom Controllers
- Automatic Bath fill function
- Shower saver feature – preset your desired litres
- Digital Clock, Speaker & Volume Controls

### Wireless vs Hard-wired Controllers

Up to 4 Water Controllers can be installed throughout a home for all Rinnai INFINITY models in almost combination - Wired, Wireless & Deluxe. It is not always possible to run wires in all installations so we have introduced both options for the Universal model catering for different situations.



Wireless Controller



Universal Controller



Deluxe Kitchen Controller



Deluxe Bathroom Controller

### Handy Tip

Wireless Universal Controllers are the easiest and quickest to install and are particularly suitable for retrofitting into existing homes

Hard wired Universal Controllers are usually cheaper to purchase and wiring can often be run through the roof and walls by a handy person



**Rinnai**

## Solar Hot Water is not only environmentally responsible but is now very affordable

Solar water heating affords us a clean, inexhaustible supply of energy that helps to reduce our dependence on fossil fuels. Rinnai draws from the expertise of over 70 years experience in designing and manufacturing Hot Water Systems. This allows us to give you a refined range of the most highly efficient quality choices available.

### How Solar Systems work

Solar systems are actually very simple in operation. Solar Collectors mounted on the roof absorb the energy from the sun and heat cooler water that flows through pipes just beneath the surface. This hot water is then transferred to a storage cylinder ready for use. As you use the hot water, cold water is pushed back into the cylinder and then through the Collector for heating.

To ensure that there is always hot water for those days that are cloudy or raining, the addition of either an electric or gas booster completes the system.

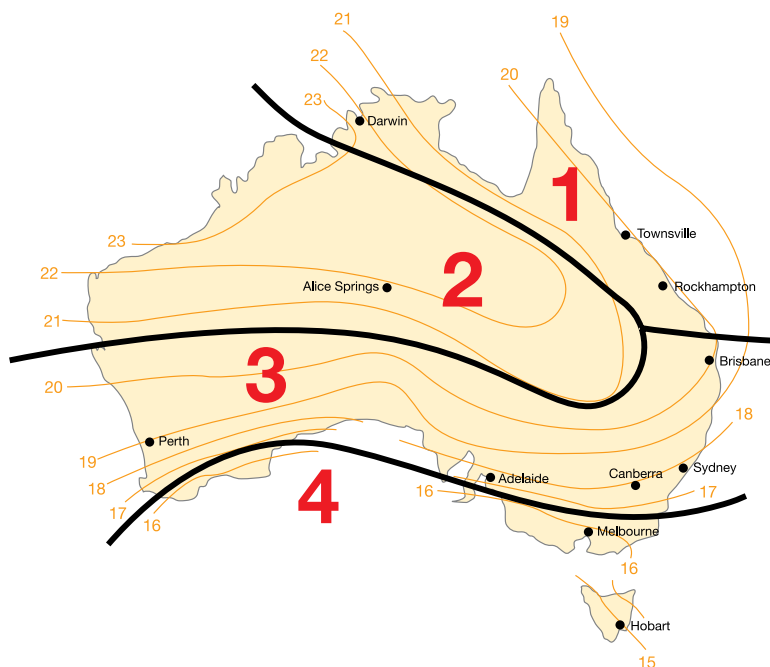
### Government Rebates

The Australian Greenhouse Office awards Renewable Energy Certificates (RECs) according to how much energy each Rinnai Solar system saves compared with a conventional electric water heater. The Federal Government legislation states that RECs are applicable when a solar system is installed in a new home or replaces an existing hot water system. In addition, substantial Federal & State Government rebates are often available for installations that upgrade from electric hot water systems to a solar system.

### How much can I get?

For the purposes of RECs assessment, Australia is divided into 4 solar zones as shown in the map below. The actual number of RECs is dependant on many factors including the booster type, the solar zone, the system & number of Collectors installed and in a changeover, the type of system replaced. Rinnai Solar systems are typically awarded between 20 to 42 RECs. Each REC has a \$ value that fluctuates according to market demand, which needs to be checked at the time of purchase. If a REC was valued at (say) \$37, your rebate for Rinnai systems would be anywhere between \$740 and \$1554.

At the time of printing this brochure, the Federal Government is also offering an additional \$1000 to switch from an electric system to Solar. In some States there are additional rebates on top of this again!



Close Coupled System with Excelsior Collectors



Enduro Collectors



Excelsior Collectors



Equinox Collectors



E-Frost Collectors

### Handy Tip

#### Solar Rebate Estimator

To assist with understanding all the rebates available, Rinnai has introduced an on-line Solar Rebate Estimator which has the latest up to date rebates and values.

See [www.rinnai.com.au](http://www.rinnai.com.au) for details



### Close Coupled Systems

Where the Storage Cylinder and the Solar Collectors (panels) are coupled together and the installation is on the roof. A choice of an electric boost element in the cylinder or a gas booster installed usually on the side of the house completes the system.

#### Benefits:

- Technically very efficient, economical to install and low maintenance
- No recirculating pumps and pipe runs – reducing heat losses and improving running efficiencies
- No electricity required to operate pumps to recirculate the water through the collectors
- Space saving in that it eliminates the need for a storage tank at ground level – ideal for courtyard homes or small blocks
- Supplied standard in Titanium colour
- Wide range of Colorbond® colours available. Ask your Rinnai Solar consultant for selection



### Split Systems

Where the Storage Cylinder and the Solar Collectors are literally split and installed separately. A choice of an electric boost element in the cylinder or an in-line gas booster which can be installed on the side of the cylinder, or remote mounted on a wall.

#### Benefits:

- Easy installation on roofs
- Streamlined appearance - minimal impact on the aesthetics of your roof line with only the Collectors visible
- Split Systems do not require reinforcement of the roof structure, as the weight associated with water storage is at ground level
- Split System cylinder can be installed internally or externally
- Collectors and the tank do not need to be installed at the same time – ideal during construction of new homes and major renovations



### What is the Booster?

The booster is simply a backstop to make sure you always have hot water available, such as during cloudy or rainy weather or during the winter months. It also operates should you exhaust the stored water on those occasions when an extra family stays for a weekend!

#### Electric Boost

- Bottom element cylinders connected to off peak receive the most solar energy when hot water is used in the morning. Solar energy reheats the water and is topped up overnight by the electric booster if required
- Continuous tariff suits bottom element tanks where water is used all day and both solar and electric energy reheat the water
- Mid element tanks are offered in Prestige 250 and 315 split systems and operate like a close coupled solar water heater where solar heats the lower part of the cylinder and electric boost (continuous or off peak) maintain full tank temperature

#### Gas Boost

- The in-line gas booster detects the temperature of the solar pre-heated water from the cylinder. Gas boosting automatically operates, only when necessary to maintain full delivery temperature
- Regardless of whether your hot water is used in the mornings or evenings, gas boosting is the most efficient, convenient and cost effective boost option

**Gas boosters operate only on demand and have the additional benefit of never running out of hot water**



**NEW 26i Internal Model  
also available**



The Rinnai Solar Hot Water Systems are separated into 2 ranges:

### Rinnai Prestige

- Highest quality Stainless Steel cylinders
- Supplied with high efficiency Excelsior Solar Collectors
- Available in both Close Coupled and Split Systems
- Available in both Gas or Electric Boost

#### Storage Cylinders

- Long lasting commercial grade Stainless Steel construction
- Specifically designed for solar ensuring maximum heat retention
- Do not require a sacrificial anode saving on maintenance costs

#### Excelsior Solar Collectors

- Highly efficient all copper Collector with a selective surface maximising energy from the sun
- Full aluminium casing for corrosion resistance with replaceable glass
- Also available in frost tolerant versions - Excelsior FTC and E-Frost (see below)



### Rinnai Sunmaster

- High quality Vitreous Enamel lined steel cylinders
- Supplied with high efficiency Enduro or Equinox (FTC) Collectors
- Available as Split Systems only in both gas or electric boost

#### Modular System

- Components supplied separately allowing you to select your own system
- Collectors and cylinder can be installed at separate times which is ideal for working around construction timetable

#### Storage Cylinders

- Cost effective glass lined (Vitreous Enamel) tanks
- Tall slimline design with a smaller footprint for minimal aesthetic impact

#### Enduro & Equinox Solar Collectors

- Highly efficient aluminium fin solar absorber to maximise efficiency
- 8 Riser tubes per collector for effective transfer of solar energy to the water
- Full aluminium casing for corrosion resistance
- Equinox Collector has added feature of Frost Protection (see below)
- Also available with E-Frost Collector for subzero applications (see below)



### Frost Protection

If you live in a frost prone area, it is important that you specify suitable solar collectors. In VIC, NSW and ACT for example, it is mandatory to install FTCs/E-Frost in certain areas as determined by listed post codes. For further information, please talk to your solar specialist or refer to the full warranty conditions on-line at [www.rinnai.com.au](http://www.rinnai.com.au)

#### Standard Collectors

*Excelsior and Enduro* are not warranted for any damage due to freezing or frost

#### FTC Collectors

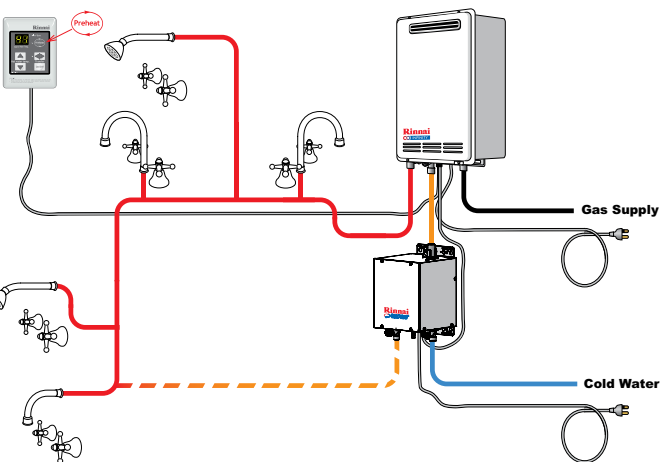
*Excelsior FTC and Equinox* are warranted to -6°C except in VIC, NSW and ACT where warranty is determined by postcode.

#### E-Frost Collectors (Split Systems only)

E-Frost is warranted to -12°C except in VIC, NSW and ACT where warranty is determined by postcode.

**NOTE:** In Alpine areas such as Bogong, Falls Creek Mount Buffalo, Mount Buller, Mount Hotham, Mt Baw Baw, Lake Mountain, Charlotte Pass, Mt Selwyn, Mt Kosciusko, Perisher Blue and Thredbo, there is no warranty for damage caused by frost, freezing or snow cover for any Rinnai Solar Collector.

## Accessories



Typical Smartstart® Installation

The following accessories are available for the Rinnai Continuous Flow Models.

### Save Water with your Rinnai INFINITY

In addition to the new Rinnai INFINITY 26 Smartstart (fully integrated unit on page 8), Rinnai also offer the Smartstart® as an optional feature for any Rinnai INFINITY Continuous Flow hot water system, including the highest efficiency Enviro range.

All Smartstart® water saver systems pre-heat the water in the pipes before you turn on the hot tap - reducing water wastage whenever a hot tap is turned on. It is usually plumbed as a 'ring-main' or loop around the house. The system is best suited to new homes, renovations or retrofitting into houses where access can be gained to run additional piping. We recommend discussing suitability with your plumber.

Operation is enabled via any of Rinnai's Water Controllers. It's a worthwhile investment to save the most precious of our natural resources – water!

### Pipe Cover

Easily attached to the Rinnai INFINITY hot water systems to provide a clean and smooth finish to the installation, hiding unsightly pipe work and sheltering the power point.

### Wall Cavity Recess Box

Allows you to hide the Rinnai INFINITY inside the wall cavity, saving you precious space, and giving a neat and tidy finish. UV Stabilised and fully paintable to blend with any colour scheme. Optional wall frame available to suit weatherboard walls.

### Security Bracket

Secure your investment with Rinnai's quick and easy to install security bracket.

### Flue Diverter

The sideways flue diverter directs the flue gases sideways. This may allow installation into areas with restricted ventilation, such as balconies.



Pipe Covers



Wall Cavity Recess Box



Security Bracket



Flue Diverter

## Continuous Flow Specifications

INFINITY Model	16	20	26	26Plus	26i	26 Smartstart®	26 Enviro	32	32 Enviro
									
Installation	External	External	External	External	Internal	External	External	External	External
Hot Water Capacity raised at 25°C (unmixed)	16 L/min	20 L/min	26 L/min	26 L/min	26 L/min	26 L/min	26 L/min	32 L/min	32 L/min
Hot Water Capacity raised at 20°C (unmixed)	20 L/min	24 L/min	26 L/min	30 L/min	32 L/min	26 L/min	35 L/min	37 L/min	37 L/min
Gas Rate MJ/h (Max)	125	160	199	199	195	199	172	250	211
AS4553 Efficiency Star Rating	5.4	5.6	5.1	5.2	5.0	5.1	7.0 Equivalent	5.3	6.8 Equivalent
Pre-set temperature (°C)	50°C/60°C	50°C/60°C	50°C/60°C	60°C	50°C/60°C	50°C	60°C	50°C/60°C	60°

## Solar Specifications

Brand	System	Boost	Mount	Size	No of Collectors	Construction	Boost Size
Sunmaster	1	Gas	Split	175 Litre	1	Vitreous Enamel	S20
	2		Split				S26
Sunmaster	3		Split	215 Litre	2	Vitreous Enamel	S20
	4		Split				S26
Prestige	B		Split	250 Litre	2	Stainless Steel	S20
	C		Split				S26
Sunmaster	5		Split	270 Litre	2	Vitreous Enamel	S26
Prestige	D		Split	315 Litre	2	Stainless Steel	S26
	E		Split		3		
Sunmaster	6	Electric	Split	200 Litre	2	Vitreous Enamel	3.6kW
Prestige	F		Split	250 Litre	2	Stainless Steel	3.6kW
Sunmaster	7		Split	315 Litre	2	Vitreous Enamel	3.6kW
	8		Split		3		
Prestige	G		Split	315 Litre	2	Stainless Steel	3.6kW
	H		Split		3		
Prestige	L	Gas	Close Coupled	180 Litre	1	Stainless Steel	S20
Prestige	M		Close Coupled	330 Litre	2	Stainless Steel	S26
Prestige	i	Electric	Close Coupled	180 Litre	1	Stainless Steel	2.4kW
Prestige	J		Close Coupled	330 Litre	2	Stainless Steel	2.4kW
	K		Close Coupled				3.6kW

**Please note:** Other combinations are available on request



## Warranty

### Continuous Flow Systems

Continuous Flow Water Heaters <sup>(3)</sup>		All INFINITY Models		Builders Range Models		Heavy Duty (HD) Models		Smart-Start® Water Saver	Water Controllers	Accessories <sup>(4)</sup>
		Heat Exchanger	All other components	Heat Exchanger	All other components	Heat Exchanger	All other components			
Domestic Use	Parts	12 Years	3 Years <sup>(2)</sup>	10 Years	3 Years <sup>(2)</sup>	12 Years	3 Years <sup>(2)</sup>	3 Years	3 Years	1 Year
	Labour	3 Years <sup>(2)</sup>	3 Years <sup>(2)</sup>	3 Years <sup>(2)</sup>	3 Years <sup>(2)</sup>	3 Years <sup>(2)</sup>	3 Years <sup>(2)</sup>	3 Years	3 Years	1 Year
Commercial Use	Parts	1 Year	1 Year	1 Year	1 Year	5 Years <sup>(1)</sup>	1 Year	1 Year	1 Year	1 Year
	Labour	1 Year	1 Year	1 Year	1 Year	1 Year	1 Year	1 Year	1 Year	1 Year

(1) One (1) year warranty on Heat Exchanger when pre-set to 85 or 95°C. (2) 5 Years if two or more controllers are installed in domestic applications. (3) The models in this table are unsuitable for solar hot water applications. Any failure or service issue when installed in a solar hot water application is not covered by warranty. Exceptions to this are Heavy Duty models for Rinnai Demand Duo commercial applications using solar boosting and models in this table converted by Rinnai specifically for solar applications and for use in Rinnai solar hot water systems. See Conditions and Exclusions for more details. (4) Accessories include pipe covers, recess boxes, security brackets and flue diverters and coaxial flueing.

### Solar Systems

Solar Hot Water Systems		Solar Compatible Continuous Flow Water Heaters - models S20 and S26 and other models converted by Rinnai for Solar applications <sup>(1) (3)</sup>		Storage Cylinders		Solar Collectors	Components <sup>(2)</sup>
		Heat Exchanger	All other components	Vitreous Enamel (Glass) Lined Sunmaster Range	Stainless Steel Prestige	Enduro Equinox Excelsior E-Frost	
Domestic Use	Parts	10 Years	3 Years <sup>(4)</sup>	5 Years	10 Years	7 Years	1 Year <sup>(4) (5)</sup>
	Labour	3 Years	3 Years	3 Years	3 Years	1 Year	1 Year
Commercial Use	Parts	5 Years	1 Year	1 Year	5 Years	5 years	1 Year
	Labour	1 Year	1 Year	1 Year	1 Year	1 Year	1 Year

(1) The continuous flow models in this column are suitable only for solar hot water applications. Any failure or service issue when installed in a non solar hot water application is not covered by warranty. (2) Components include pumps, system controllers, sensors, thermostats, valves, electric heating elements and anodes where applicable. (3) Rinnai Infinity 26 Internal, HD200i, HD200e and HD250e models can be converted for solar applications by Rinnai by order request. (4) For Victorian installations only - 5 Year warranty on the solar circulating pump, solar controller and components within the continuous flow water heater in order to comply with State legislation. (5) For Queensland installations only - 2 Year warranty on the solar circulating pump in order to comply with State Government legislation where applicable.

#### Please note:

For full definitions of Domestic and Commercial use, along with the full conditions and exclusions, please refer to [rinnai.com.au](http://rinnai.com.au)

Dimensions are subject to production tolerances and may vary slightly from those given.

Rinnai Australia Pty Ltd reserves the right to make modifications and change specifications without notice.

## Additional Rinnai Gas Appliances

---

In addition to the hot water products in this brochure, Rinnai have many other great appliances to compliment both indoor and outdoor lifestyle solutions.

### Portable Gas Space Heating

The Rinnai range of Portable Heaters are a highly efficient and flexible home heating alternative. They require no installation and can be stored away when not used. There are 3 forms of heating available - Radiant heat, Convection heat gently circulated with a fan and a combination of both Radiant and Convection heat.

### Flued Gas Space Heating

The Rinnai range of Flued Heaters are permanently installed in a home utilising fixed fluing to ensure there are no indoor emissions. They offer powerful heat in a wide range of designs and styles. They are perfect for homes undergoing renovations and in particular extensions where an additional efficient heating source is required.

### Gas Log Flame Fires

Rinnai has an extensive range of Gas Log Flame Fires that have the ambience of a real fire without the hassle or mess. Not only do they look great for those formal or romantic occasions, they are also a powerful source of heating. Additionally, Rinnai have a range of purely decorative Flame Fires including a model that is designed to compliment outdoor entertaining areas.

### Gas Dryers

Relatively new to Australia, Gas Dryers have revolutionised clothes drying as we know it. High efficiency gas is used to gently dry clothes in around half the time, half the running cost and half the environmental impact. Truly innovative!

### Need help with an installation?

In most situations Rinnai retailers can assist with the installation of our appliances. Should this not be the case, Rinnai has an installation service available direct to the end-user. Any installation of a Rinnai appliance is a specialist process and requires trained professional installers to ensure safe and efficient operation of the appliance. This is particularly relevant for connection to gas, electrical changeovers and the installation of Solar Collectors. Our Rinnai installers are not only very familiar with our products, but are fully insured and OH&S compliant. Be confident in your installation by employing Rinnai Service.

**For further information, please call 1300 555 545**

### Request a brochure

If you would like a brochure from any of product ranges you can call 13 14 19 or view and download online at [rinnai.com.au](http://rinnai.com.au)

The Rinnai logo is displayed in white text on a red rectangular background.

Energysaver® Flued Gas Space Heating



Sapphire Gas Log Flame Fire



Gas Clothes Dryer

At Rinnai Australia  
we are committed to  
ongoing innovation to deliver  
efficient, well engineered  
and designed products.

We aim to offer a superior  
range of home appliances that  
provide a clear insight into  
what the future holds for  
Australian homes.

The simple pleasures of  
unlimited hot water, with  
precise temperature control,  
efficient and stylish heating  
solutions and the superb  
quality of a Rinnai Outdoor  
Kitchen - all designed to  
enhance your lifestyle with  
the environment in mind.

The Rinnai logo consists of the word "Rinnai" in a white, bold, serif font, centered within a solid red rectangular background.

**RINNAI AUSTRALIA PTY. LTD.**

ABN 74 005 138 769

10-11 Walker Street Braeside VIC 3195

For further information visit

**[www.rinnai.com.au](http://www.rinnai.com.au)**

**or call 1300 555 545**