

Pool Fencing

Understanding the following questions ensures a smooth project and a great long-term environment for your pool.

- What are the relevant requirements of the Australian Standards for Swimming Pool Safety?
- What type and style of fence?
- What materials are most appropriate?
- What colour and how it is applied?
- How will it be installed?
- When do I want the fence installed?

Australian Standards for Swimming Pool Safety

The Standards cover the design, construction and performance of fences that restrict the access of young children to swimming pools. All our pool fences comply with the strength and design aspect of the standard. We also need to consider the placement of the fence at your house to ensure that it complies with the standard. Some key aspects of the Australian Swimming Pool Standards are:

- The fence must be at least 1200mm high measured from the ground;
- The gates must swing away from the pool and be self closing, self latching and have child resistant latches;
- There must be a clear span of at least 1200mm from the top of the fence outside of the pool area;
- There must be at least 900mm between any horizontal rails;
- The maximum gap in or under the fence is 100mm.

Additional information is available from your local council or Standards Australia.

What Type of Fence

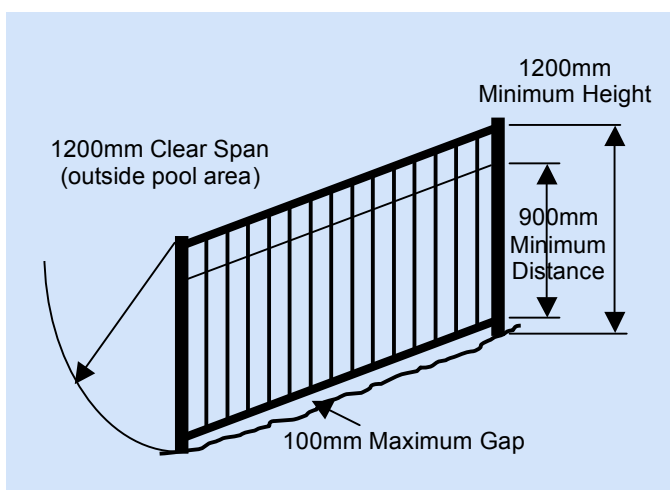
There are many different types of pool fences. Including simple styles that provide a safe environment, feature fences that provide accent to your home, or glass fences that preserve your view. Also consider the fence



location and how it impacts your entertaining. For example: Where is the BBQ located? Is it easy to get from the house to the pool? Is the fence directly between the entertaining area and pool?



Pool fences provide a safe environment for children



Key aspects of the Australian Swimming Pool Standards



There are many different types of pool fences

Materials and Construction

Pool fences can be constructed with a variety of materials. Over time, we have found that steel and glass are the best materials for pool fences.

Steel Fences

The verticals are made using 16mm round tube, 12.7 square tube or 8mm solid rod. The top and bottom channel are 38x25mm rectangular tube. Posts are 50mm square. The spears are cast aluminium, rings are 8mm rod for Fineline and 1.5mm flat for Tubeline styles. The verticals are welded from the underside of the panel in holes punched in the horizontal channels. Outside brackets or L brackets attach the panels to the posts.

Corrosion Protection for Steel

Near salt-water pools, close to seawater, or in a corrosive environment, we recommend **hot dipped galvanizing** (HDG) for corrosion protection. This method is widely used in outdoor construction projects and will provide long-term corrosion protection. HDG immerses the completed panels in molten zinc and may result in a textured finish. For most environments we use **Pre-Gal** (PG) for corrosion protection. Pre-gal has a smooth finish and costs less than HDG. The zinc finish is applied to the steel during the rolling process. The zinc-coated steel is then welded into the finished panels using corrosion resistant welding material.

Glass Fences

All glass fences use toughened safety glass ranging from 6mm to 12mm thick. The glass panels are supported using stainless steel, aluminium or steel.

Colour

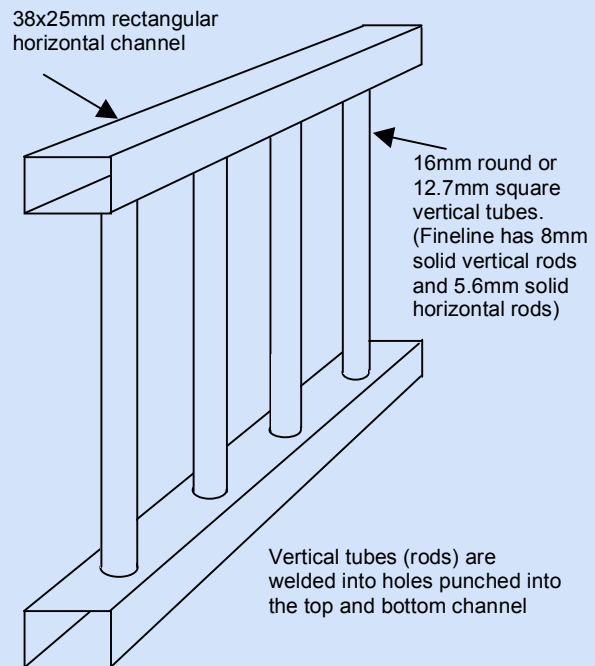
We apply colour using a **powdercoating** process where a polyester coating is baked on the finished product. This provides an excellent finish for many years. When selecting a colour, consider what is behind the fence and that darker colours are less noticeable than lighter colours.

Installation (fixing method)

Posts are generally concreted into the ground. Attaching to concrete, pavers or rock requires **core holes** to be drilled prior to concreting in the posts. Pedestal bases may be used to attach to concrete.

Timing

Keep in mind that most fences are built to order and there may be some lead-time before your fence can be installed. Consider how other projects should be coordinated such as paving or pool surfacing.



Materials for Steel Fences



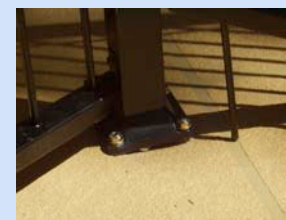
L brackets used on
Fineline Fencing



Outside brackets used
on Tubeline Fencing



Core hole in bricks



4 hole pedestal



(02) 9624 3944



www.poolsafefencing.com.au



(02) 9838 7145



info@poolsafefencing.com.au

Poolsafe Fencing Pty Ltd | ABN: 21 868 252 274 | ACN: 002 377 424 | BLN: R94595
Unit 1, 15-17 Tucks Road, Seven Hills, NSW 2147