

AUSTRALIAN COLOUR SELECTOR



OXYTECH[®]
POWDER COATINGS

Supplying Oxyplast to Australia

DECORATION, DURABILITY & VERSATILITY

Powders built to suit the Application

Oxyplast Powder Coatings have developed PR and PE polyester grade products to suit multiple substrates. Powders specifically designed for aluminium cannot offer the qualities or protection provided by a truly versatile product when used on varying materials. **Oxytech®** can provide a single product which offers a decorative and durable finish across a broad range of materials such as architectural aluminium, structural steel, zinc coated steel, media-blasted metals, steel and alloy castings and many other ferrous and non ferrous substrates. Each product is manufactured to give superior coverage, hiding power and luxurious finish with the added benefits of **“out-gassing tolerance”** for porous surfaces and **“advanced edge film-build”** on sharp edges offering crucial protection for Australia’s harsh environment. The use of high performance pigments and resins present excellent UV stability and ensure that a superior product is produced every time.

Oxytech® recommends using a suitable powder primer as part of the coating process to maximise the life span of the coated finish. All Oxyplast primers supplied by Oxytech® offer the same “out-gassing tolerance” and “advanced edge film-build” as the PR and PE polyester powder coatings with the added strength of epoxy resin systems. Oxyplast **‘Zincoprime’** is a zinc-rich epoxy primer which provides very good corrosion resistance when applied over media-blasted steel. Oxyplast **‘Epoxyprime’** is a pure epoxy primer for long term use over aluminium and zinc coated steel. These primers are highly recommended for extensive heavy industrial and environmental applications.

OXYPLAST POWDER COVERAGE										
		FILM THICKNESS - MICRONS (µm)								
COLOUR	S.G.	40	45	50	55	60	65	70	75	80
TRANSPARENT POWDERS	1.20	21	18	17	15	14	13	12	11	10
	1.26	20	18	16	15	13	12	11	11	10
BLACK COLOUR POWDERS	1.30	19	17	15	14	13	12	11	10	10
	1.40	18	16	14	13	12	11	10	10	9
	1.45	17	15	14	13	11	11	10	9	9
GENERAL COLOURS	1.50	17	15	13	12	11	10	10	9	8
	1.55	16	14	13	12	11	10	9	9	8
	1.60	16	14	12	11	10	10	9	8	8
	1.65	15	13	12	11	10	9	9	8	8
HIGH DENSITY POWDERS	1.70	15	13	12	11	10	9	8	8	7
	1.75	14	13	11	10	10	9	8	8	7
COVERAGE - SQ METRES PER KG										
<div>Coverage of Powder (sq metres per kg) = $\frac{1000}{\text{S.G.} \times \text{Film Thickness (µm)}}$</div>										

BUCKET 'N' SPONGE

Looking after the finished product.

Maintain both the aesthetic and functional properties of your powder coated finish by regularly cleaning the coated surfaces every six months. In harsher environments with high levels of salts or pollutants such as coastal or industrial areas, cleaning should be as frequent as every three months. This will keep your powder coatings looking good for many years to come.

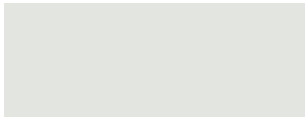
Cleaning is simple...

1. Remove coarse or loose dirt with a soft wet sponge or cloth.
2. Wash the powder coated finish with a warm, mild detergent solution to remove any salt, dust and other deposits with a soft cloth, sponge or brush.
3. After cleaning, rinse the coating with clean, fresh water.

Be careful not to damage the coating surface during cleaning by using harsh materials and cleaners such as steel wool, scouring pads, scrapers, abrasive liquids or powders. Using such cleaning products will scratch and dull the powder coated finish. If solvents must be used, mild solvents such as Isopropanol, White Spirits or Turpentine are recommended. Always test a small, unseen area of the coating prior to cleaning with solvents.

Switched On®

Industrial Switchgear Colours



RAL 7035 Light Grey
PR12/60978/CS1 Satin



RAL 7035 Light Grey Wrinkle
PR12/60978/CW2



RAL 7032 Pebble Grey
PR12/60232/CS2 Satin



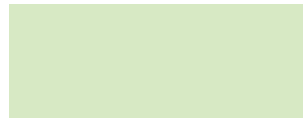
RAL 7032 Pebble Grey Wrinkle
PR12/60232/CW3



X15 Orange
PR12/6191/CS9 Gloss



X15 Orange Wrinkle
PR12/6191/CW66



G32 Opaline
PR12/20837/C8 Gloss



G55 Lichen Green
PR12/20515/C6 Gloss



T45 Cootamundra
PR12/20835/C14 Gloss



B25 Aqua
PR12/30131/C3 Gloss



N35 Light Grey
PR12/60233/CS2 Satin



N42 Storm Grey
PR12/60242/C3 Gloss



G44 Palm Green
PR12/20620/C10 Gloss



G22 Serpentine
PR12/20836/C9 Gloss



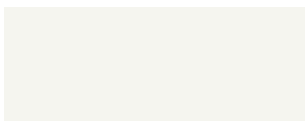
G34 Avocado
PR12/20237/C13 Gloss

OXYTECH®
POWDER COATINGS
Supplying Oxyplast to Australia

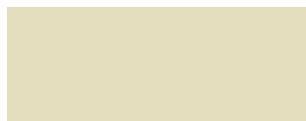


Traditional Living®

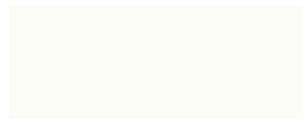
Australia's Lifestyle Essentials



Surfmist (Off White)
PR12/4761/CS3 Satin



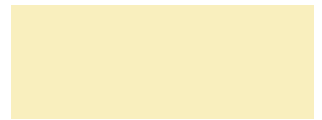
Moss Vale Sands
PR12/60185/CS5 Satin



Dover White
PR12/4526/C2 Gloss



Paperbark (Merino)
PR12/70307/CS16 Satin



Domain (Primrose)
PR12/70289/CS3 Satin



Gull Grey (Shale Grey)
PR12/60464/CS6 Satin



Birch Grey (Dune)
PR12/60545/CS2 Satin



Riversand (Stone)
PR12/90157/CS2 Satin



Sandbank (Sandstone)
PR12/70424/CS14 Satin



Armour Grey (Windspray)
PR12/80745/CS4 Satin



Jasper (Mocca)
PR12/90408/CS6 Satin



Estate (Ironbark)
PR12/20372/CS12 Satin



Picton Green (Bronze Olive)
PR12/20375/CS6 Satin



Tea Tree (Bushland)
PR12/80361/CS16 Satin



Woodland Grey (Slate Grey)
PR12/80358/CS7 Satin



Ironstone (Grey Rock)
PR12/80573/CS8 Satin



Blue Ridge (Blue Metal)
PR12/30384/CS5 Satin

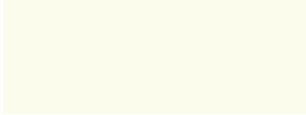
Many of Oxytech's Traditional Living® colour range are designed to harmonise with pre-coated coil steel.

Chromatic Colour[®]

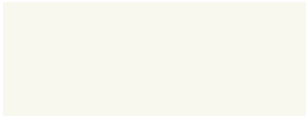
Spectrum of Colour



Bright White
PR12/4429/CS1 Gloss



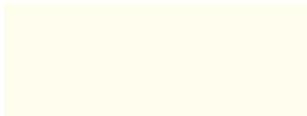
Pearl White
PR12/4370/C4 Gloss



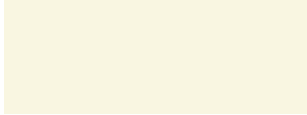
Satin White
PR12/4371/CS1 Satin



White Texture
PR12/4431/CT3



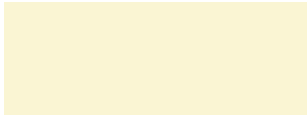
RAL 9010 Pure White
PR12/4249/CS1 Satin



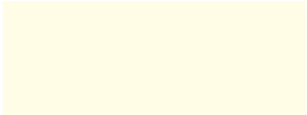
Shoji White
PR12/4752/CS10 Satin



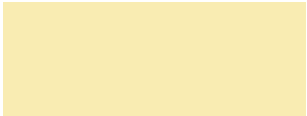
Horizon White Wrinkle
PR12/4573/CW3



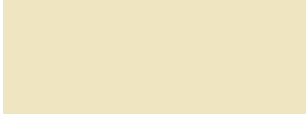
Oxytec Off White
PR16/70553/CM3 Matt



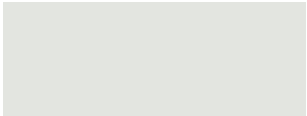
White Birch
PR12/70229/C11 Gloss



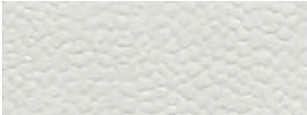
Primrose
PR12/70437/C13 Gloss



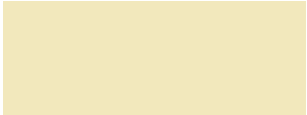
Rivergum Beige
PR12/70217/C1 Gloss



Oyster
PR12/60420/CS2 Satin



Oyster Wrinkle
PR12/60420/CW3



Magnolia
PR12/9695/C8 Gloss



Stone Beige
PR18/90492/CM11 Matt



Pottery
PR12/90314/C1 Gloss



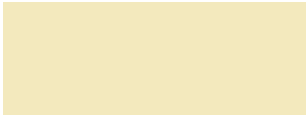
APO Grey
PR12/60169/CS2 Satin



APO Grey Wrinkle
PR12/60480/CW2



PH: 1300 353 655



Classic Cream (Smooth Cream)
PR12/70242/CS2 Satin



Mist Green (Pale Eucalypt)
PR12/20209/CS4 Satin



Cottage Green (Caulfield Green)
PR12/20546/CS2 Satin



Cappice (Weathered Copper)
PR12/90465/CS5 Satin



Bluestone (Deep Ocean)
PR12/30330/CS10 Satin



Wilderness (Rivergum)
PR12/20207/CS2 Satin



Heritage Green
PR12/20381/C22 Gloss



Hedge (Plantation)
PR12/20376/CS27 Satin



Bowral Brown
PR12/90160/CS4 Satin



Charcoal
PR12/80237/C7 Gloss



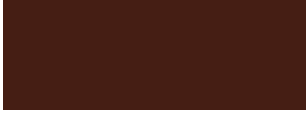
Pale Terracotta
PR12/90346/CS13 Satin



Tuscan Red (Headland)
PR12/5535/CS15 Satin



Heritage Red (Manor Red)
PR12/5363/CS13 Satin



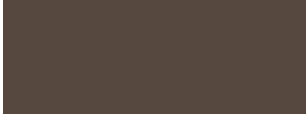
Hunter Red
PR12/5387/C15 Gloss



Claret
PR12/5362/CS4 Gloss



Federation Red
PR12/5399/C8 Gloss



Loft (Merlot)
PR12/90709/CS3 Satin



Monument (Coke)
PR12/81082/CS4 Satin



Satin Black
PR12/7087/CS1 Satin



Jet Black (RAL 9005)
PR12/710/C42 Gloss

Please allow for some colour variation between the coated coil steel and powder coated finish due to the different coating application processes.



Oxytec Silver Grey
RPR12/80973/CM3 Matt



Olde Pewter
PR12/80416/CS4 Satin



Pewter Grey Texture
PR12/80332/CT8



Notre Dame
PR12/60310/C11 Gloss



Berry Grey
PR12/80662/CS4 Satin



Periwinkle
PR12/60397/C3 Gloss



T33 Smoke Blue
PR12/30003/C2 Gloss



Wizard
PR12/30284/CS8 Satin



Navy
PR12/30267/CS3 Satin



Oxytec Dark Grey
PR18/80495/CM9 Matt



Hunter Blue (RAL 5012)
PR12/30670/CS5 Satin



Blaze Blue
PR12/30075/C5 Gloss



French Blue
PR12/30213/C3 Gloss



Space Blue
PR12/30733/C4 Gloss



Torres Blue
PR12/30191/CS4 Satin



Mint Green
PR12/2399/C10 Gloss



Cabana Green
PR12/20357/C19 Gloss



Brunswick Green
PR12/20452/C1 Gloss



Hawthorn Green
PR12/20470/C22 Gloss



Deep Brunswick Green
PR12/20222/C10 Gloss



"The Chosen Finish"



Classic Flair Colours that Sparkle and Shine



Oxytec Citi Pearl
RPR16/80827/CM3 Matt



Silver Gloss
RPR12/11060/C7 Gloss



Bright Silver*
QPR12/11109/CS55 Satin



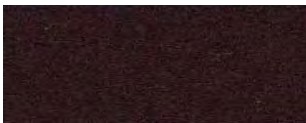
Silver Texture
QPR12/11001/CT6



Camden Silver*
QPR12/11091/C7 Gloss



Oxytec Nepean Silver*
QPR12/11094/CS14 Satin



Oxytec Mahogany Pearl
RPR12/90551/C4 Satin



Charcoal Metallic Pearl
RPR12/80960/C14 Gloss

Oxytec White Lustre
RPR16/4707/CM3 Matt



Oxytec Silver Pearl
QPR12/11168/CS46 Satin



Colonial Bronze
QPR12/90443/C27 Gloss



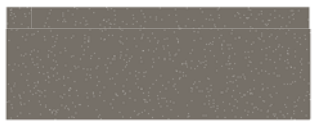
Oxytec Metallic Pearl
RPR16/90549/CM3 Matt



Hammertone Silver Grey
WPR12/1122/CH2 Gloss



Oxytec Silver Lustre
RPR16/60670/CM3 Matt



Oxytec Pewter Pearl
RPR12/80826/CS3 Satin



Oxytec Gold
PR12/1319/C13 Gloss



Black Onyx
PR12/708/CS113 Satin



Hammertone Black
WPR12/1948/CH8 Gloss

* Denotes products that require a clear topcoat for exterior or high-wear use.

**Lawn Green**

PR12/20428/C13

Gloss

**Turquoise**

PR12/20447/C14

Gloss

**Lemon Yellow**

PR12/58094/C10

Gloss

**Golden Yellow**

PR12/134/C36

Gloss

**Y14 Traffic Yellow**

PR12/58128/C21

Gloss

**Bistro Orange**

PR12/6186/C35

Gloss

**R11 International Orange**

PR12/6159/C29

Gloss

**Pink Blush**

PR12/5701/C11

Gloss

**R13 Signal Red**

PE50/5347/C22

Gloss

**Flame Red**

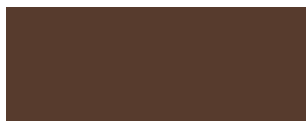
PR12/5225/C33

Gloss

**Terracotta**

PR12/90313/CS5

Satin

**Vincent Brown**

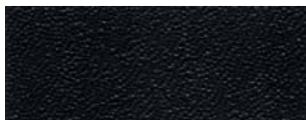
PR12/90162/CS3

Satin

**Deep Charcoal**

PR12/80359/CS

Gloss

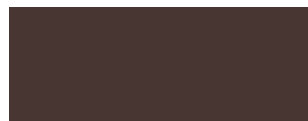
**Black Texture (Interior)**

FF165/737/CT4

**Coffee**

PR12/90494/CS17

Satin

**Hammersley Brown**

PR12/90371/CS5

Satin

**Auto Matt Black**

PR18/7120/CM3

Matt

**Black Custom**

PR12/708/CS102

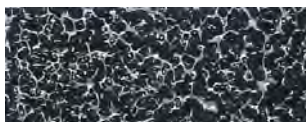
Satin

**Antique White***

QPR12/4465/CA5

**Antique Light Silver***

QPR12/1410/CA2

**Antique Dark Silver***

QPR12/1410/CA7

**Antique Gold***

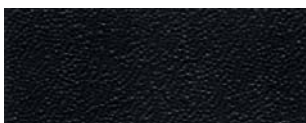
RPR12/1432/CA8

**Silver Wrinkle***

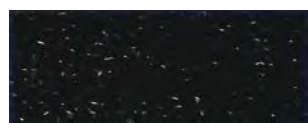
QPR12/1148/CA5

**Graphite Wrinkle (Interior)**

QFF175/1417/CA57

**Ebony Black Texture**

PE50/7160/CT5

**Black Wrinkle**

PR12/7112/CW1

Gloss

Work Mates[®]

Vehicle and Equipment Colours

**Bright Red**

PR12/5691/C3

Gloss

**Colorado White**

PR12/4610/CS5

Satin

**Alpine White (Isuzu[®])**

PR12/4651/C7

Gloss

**Cool White (Ranger White)**

PR12/4801/CS6

Satin

**Dozer Yellow (Caterpillar[®])**

PR12/90717/C4

Gloss

**JD Yellow (RAL 1018)**

PR12/159/C46

Gloss

**JD Green**

PR12/20726/C

Gloss

**Olive Drab**

PR18/20427/CM8

Matt

[^]Denotes the vehicle manufacturer from which the colour was matched by Oxytech[®]. Toyota[®] is a trademark of Toyota Jidosha Kabushiki Kaisha, Isuzu[®] is a trademark of Isuzu Jidosha KK, Caterpillar[®] is a trademark of Caterpillar Inc and no rights in the formerly mentioned marks are claimed by Oxytech Powder Coatings Pty Ltd.

OXYPLAST POWDER COATINGS PRODUCT RANGE

TYPE	GRADE	GLOSS AT 60°	CURING SCHEDULE	DESCRIPTION
EPOXY -For Interior-	E6	Super Matt 1-5%	200°C / 10 min	Excellent flow-out
	E8	Matt 10-18%	200°C / 10 min	Excellent flow-out
	E5	Matt 20-30%	200°C / 10 min	Excellent flow-out
	E29	Satin-Glossy 60-100%	180°C / 10 min	Very good flow-out E29 Zincoprime: Anti-corrosion primer
	E39	Satin-Glossy 60-100%	200°C / 20 min	Electronic and electrical insulation coating
	E61	Satin-Glossy 70-100%	160°C / 10 min	Outstanding chemical, mechanical and corrosion resistance FDA compliance
HYBRID EPOXY-POLYESTER -For Interior-	FF4	Matt 13-25%	180°C / 10 min	Good flow-out
	FF6	Matt 5-10%	200°C / 10 min	Excellent flow-out
	FF160	Satin-Glossy 50-95%	180°C / 10 min	Very good flow-out Good overbake resistance and excellent mechanicals
	FF165	Matt-Satin 30-45%	180°C / 10 min	Excellent flow-out
	FF175	Matt 13-25%	180°C / 10 min	Very good flow-out
	FF190	Matt-Satin 15-45%	190°C / 10 min	Excellent flow-out Improved overbake resistance compared to matt hybrids
	SP	Matt (Moire) 1-10%	200°C / 10 min	Moire finish ("Water Silk") Excellent mechanicals
POLYESTER -For Exterior-	PE50	Satin-Glossy 50-95%	180°C / 10 min	Standard durable TGIC-free
	PR10	Matt 5-25%	200°C / 10 min	Standard durable
	PR12	Matt-Glossy 25-95%	200°C / 10 min	Standard durable Architectural and general industrial
	PR16	Matt-Satin 15-35%	200°C / 10 min	Standard durable Good finish
	PR18	Matt-Satin 15-40%	200°C / 10 min	Standard durable Very good finish
	PR28	Glossy 90-100%	200°C / 10 min	Standard durable Clear-coat
	APR	Matt-Glossy 25-95%	200°C / 10 min	Super durable Architectural
	SPR	Satin-Glossy 50-95%	200°C / 10 min	Super durable Architectural
FLUORO-POLYMER -For Exterior-	SOLAR-HYD	Matt-Satin 25-70%	200°C / 15-20 min 205°C / 12-15 min	Hyper durable Thermosetting fluoro-polymer
POLYURETHANE -For Exterior-	PU1	Satin-Glossy 50-95%	200°C / 10 min	Standard durable Enhanced chemical resistance
	PU5	Glossy 85-95%	210°C / 10 min	Standard durable Anti-graffiti properties, excellent chemical resistance

OXYTECH®
POWDER COATINGS

Oxytech Powder Coatings Pty Ltd

ABN: 19 131 156 217

PO Box 149,
Horsley Park, NSW 2175

Aust. Wide: 1300 353 655

www.oxytech.com.au

Switched On®, Chromatic Colour®, Traditional Living®, Classic Flair®, Work Mates® and Oxytech® are all trademarks of **Oxytech Powder Coatings Pty Ltd**.

Colours displayed in the "Australian Colour Selector" are indicative only. Colour samples have been matched as close as possible to powder coated samples provided by Oxytech®, using modern printing processes. If a more accurate product sample is required please request a powder coated colour swatch from **Oxytech Powder Coatings Pty Ltd on 1300 353 655**.

All images displayed on the "Australian Colour Selector" are provided by clients of Oxytech® and are examples of where **Oxyplast Powder Coatings** can and have been used.

The information provided in the "Australian Colour Selector" is provided for reference only and is correct at the time of print. For further information about products please contact Oxytech® on 1300 353 655 or www.oxytech.com.au.

Australian Colour Selector- 1st Edition, Printed 2010
©Copyright 2010 Oxytech Powder Coatings Pty Ltd

RAL EFFECT RANGE

490 COLOURS

RAL E1 PRIMARY STANDARDS

RAL K2 FAN DECK

RAL EFFECT A6 SINGLE SHEETS



RAL E2 FAN DECK



RAL K5 FAN DECK

RAL CLASSIC RANGE

210 COLOURS

RAL K1 BOOKLET

RAL K5 FAN DECK

RAL K7 FAN DECK

RAL K6 A4 SHEETS

RAL F5 INFORMATION CARD

RAL 840-HR & 841-GL PRIMARY STANDARDS

RAL DESIGN RANGE

1625 COLOURS

RAL D2 FAN DECK

RAL D4 ATLAS

RAL DESIGN A6 SINGLE SHEETS

RAL DESIGN A4 SINGLE SHEETS



RAL D4 ATLAS

FOR MORE INFORMATION ON RAL COLOURS
AND OTHER AVAILABLE PRODUCTS:

WWW.RALCOLOURS.COM.AU

PH: 1300 353 655

RAL COLOURS
RAL gGmbH

