



# AUSTRACK CAMPERS®

& OFFROAD HYBRID CARAVANS

BUILT TOUGH. BUILT TO LAST

## SERIES 3

# TALAWANA X15LS

HYBRID CAMPER LOW SERIES



THE POWER OF  
**REDARC**

**\$9,850** BONUS UPGRADES  
INCLUDED AS STANDARD!

**ONLY \$68,990**

FINANCE FROM \$249\*\*



\*\*Conditions, fees and charges apply. Rate subject to change without notice. \*Comparison rate calculated on a loan amount of \$50,000 secured over a term of 7 years based on monthly repayments. WARNING: This comparison rate applies only to examples given. Different amounts and terms will result in different comparison rates. Costs such as redraw or early repayment fees and cost savings such as fee waivers are not included in the comparison rate, but may influence the cost of the loan. Finance is subject to lenders lending criteria. Assistance provided by Australack Finance Australian Credit Licence 422959.

**LIFETIME STRUCTURAL WARRANTY ON ALL CAMPERS.**

- ✓ 600 WATTS ROOF MOUNTED SOLAR
- ✓ 4 X 100AH LITHIUM BATTERIES
- ✓ TRUMA UNDERFLOOR AIR CONDITIONER
- ✓ REMOTE CONTROLLED ELECTRIC ROOF
- ✓ WIRELESS MOBILE PHONE CHARGERS
- ✓ INTERNAL FRIDGE



# TALAWANA X15LS

## INCLUDED AS STANDARD

- ✓ Truma Under Floor Air Conditioner
- ✓ **REDARC** 2kW Pure Sinewave Inverter with 240v auto changeover
- ✓ **REDARC** Manager30 Complete Battery Management & Charging System
- ✓ 4 x 100 Amp Renogy Lithium Batteries
- ✓ 600 Watt Roof Mounted Solar Panels
- ✓ MP5 Bluetooth Stereo System
- ✓ SMART TV with External & Internal Mounts
- ✓ Inline Gas Plumbing with 2nd outlet (Fully Certified)
- ✓ Truma Ultrarapid 14L Gas/Electric Hot Water System
- ✓ Mains Water Connections
- ✓ McHitch 3.5T Full Off-road Coupling
- ✓ 2 x Spare Wheels
- ✓ Rock sliders
- ✓ 1 Piece Fully Moulded Internal Ensuite w/Hand Basin
- ✓ Living Area Cupboards & Storage
- ✓ Luxury King Size Inner Pocket Spring Bed
- ✓ Electric-powered Roof with Remote Control
- ✓ 2 x Benchtop Wireless Mobile Phone Chargers
- ✓ LED Lights & Reading Lights
- ✓ LED Strip Lights throughout interior
- ✓ External Shower & Ensuite Tent
- ✓ 240L Fresh Water Tanks
- ✓ 80L Grey Water Tank
- ✓ Generous External Storage
- ✓ Pole Storage
- ✓ 4.5 x 2.4M Water Proof Awning
- ✓ 16oz Fully Enclosed Annexe with Walls & Vinyl Floor
- ✓ Full Security Mesh Front Door
- ✓ Fully Enclosed Front Aluminium Storage Box
- ✓ Double Glazed Windows
- ✓ LED Colour Changing Bug Deterrent Lights
- ✓ External Slide-out Kitchen
- ✓ Internal Fridge



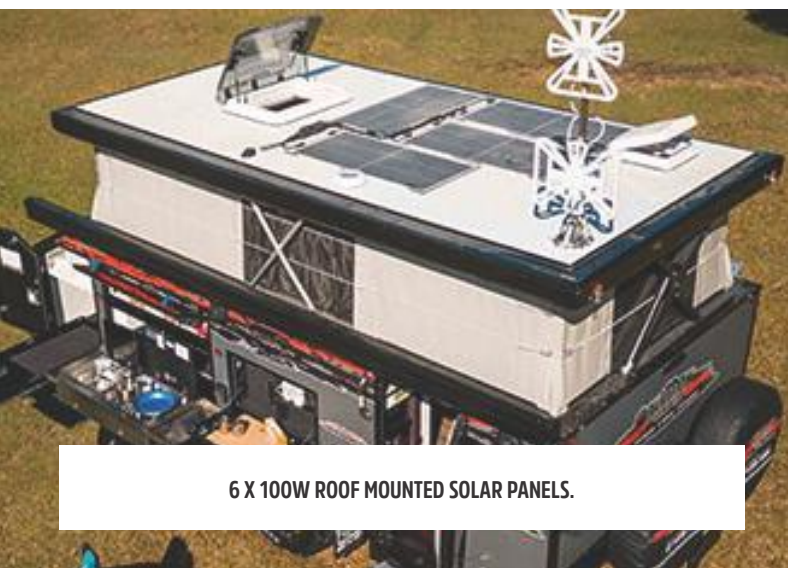




**KING SIZE INNER POCKET SPRING MATTRESS,  
ADJUSTABLE AND REMOVABLE DINING TABLE.**



**TRUMA UNDER FLOOR AIR CONDITIONER.**



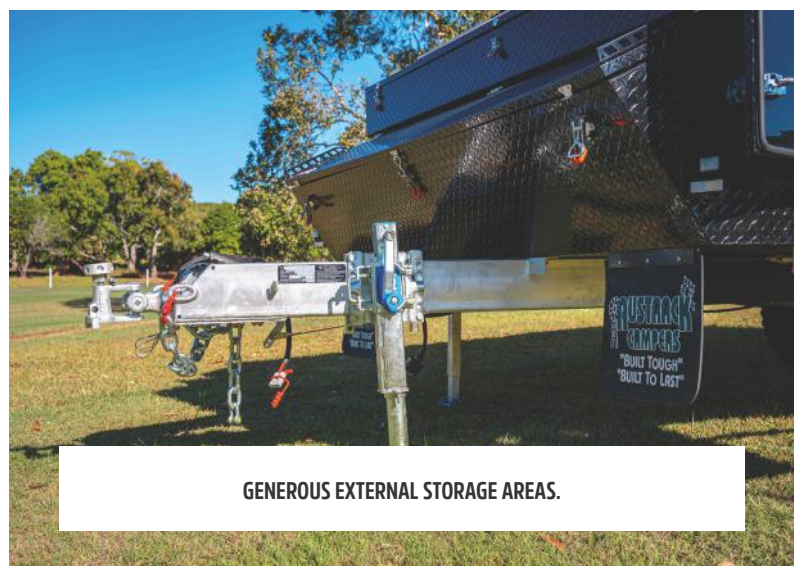
**6 X 100W ROOF MOUNTED SOLAR PANELS.**



**CONTROL PANEL WITH WATER LEVEL GAUGES, MULTIMEDIA SYSTEM.**



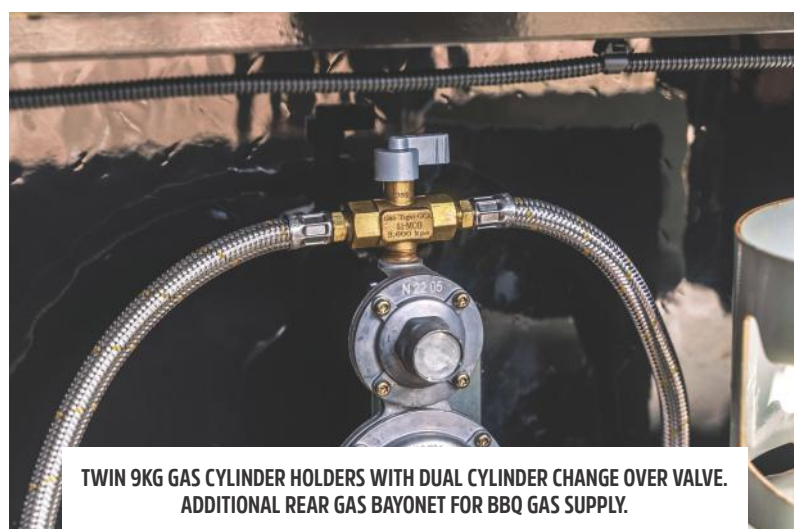
**REDARC 2KW PURE SINEWAVE INVERTER WITH REMOTE SWITCH  
REDARC MANAGER30 COMPLETE BATTERY MANAGEMENT & CHARGING SYSTEM**



**GENEROUS EXTERNAL STORAGE AREAS.**



**MCHITCH 3.5T FULL OFF-ROAD COUPLING. DOUBLE ADR APPROVED RATED SAFETY  
CHAINS. ARK XO 750 SERIES EXTRA HEAVY DUTY DUAL WHEEL JOCKEY WHEEL.**



**TWIN 9KG GAS CYLINDER HOLDERS WITH DUAL CYLINDER CHANGE OVER VALVE.  
ADDITIONAL REAR GAS BAYONET FOR BBQ GAS SUPPLY.**



# TALAWANA X15LS

## SPECIFICATIONS

**Construction** • Fully welded aluminium frame construction with Royal silver aluminium composite panel & gloss black aluminium checker plate. Drawbar & Chassis hot dipped galvanised Inside & Outside 150 x 50 x 4mm. Full RHS box chassis 100 x 50 x 3mm. Q345 Steel Tube.

**Roof Construction** • Reinforced aluminium composite with aluminium frame.

**Hitch** • McHitch 3.5T Full Off-road Coupling. ADR approved & rated safety chains. Dual rear recovery points. Ark XO 750 Series extra heavy duty fully adjustable dual wheel jockey wheel.

**Brakes** • 6 stud 4x4 hubs, heavy duty bearings & 12 inch heavy duty electric brakes with mechanical handbrake. Trailer breakaway system.

**Suspension** • Adjustable independent coil spring suspension with twin reinforced shock absorbers.

**Gas & Fuel** • 2 x 9kg or 4.5kg Gas cylinder holders. 2 x 20L Jerry Can tiedown points.

**Wheels & Tyres** • 4 x Brand New Reinforced Black alloy mag wheels. 4 x Brand New M/T (Mud Terrain) tyres. Tyre Size : 265/75-R16. 4 x Heavy Duty Lockable & Adjustable Drop-Down stabiliser legs. Double spare tyre holder. Embossed Mudflaps.

**Electrical Connection** • 1 x 7 pin flat or round plug. 1 x 50Amp Anderson plug. External 240V inlet, 240V outlet.

**Electrical System** • 4 x 100Ah Renogy Lithium batteries. 6 x 100W roof mounted solar panels. REDARC 2kW Pure Sinewave inverter with 240V auto changeover. REDARC Manager30 with built in 30amp AC charger, 30amp DC/DC charger. Including full battery management system. Internal & external 240V outlets. Multiple USB & accessory outlets.

**Lighting** • External LED body lights, Multiple internal LED lights & 2 LED reading lights. LED Stair light handle.

**Gas Lines** • Completely plumbed from gas cylinders to kitchen with dual cylinder change over valve & gas certification certificate. Additional bayonet gas connection at rear of camper for a BBQ gas supply.

**Water Storage** • 2 x 120L Freshwater water tanks & 1 x 80L plumbed grey water tank & system. 12.5L per min 12V Electric Pump.

**Storage** • Multiple Storage Boxes with Drawers & plenty of open space. High Quality pinch-weld automotive seals & adjustable compression locks.

**Windows & Doors** • Double glazed 3-stage opening tinted windows & shade curtain with mosquito & midgee proof meshing & blackout screens.

**Internal setup** • Electric-powered pop up roof with remote for easy quick set up. Internal zip windows with screens in pop top.

**Internal Features** • Timber look Vinyl flooring. Plush faux leather seating. Under seat storage. Dining table. Upright wardrobe & drawer storage. Multiple internal side pockets for extra storage. Internal 80L fridge.

**Dining** • Adjustable table with Internal Seating.

**Mattress** • Luxury king size inner pocket spring mattress.

**Shower** • Truma Water ultra rapid Gas/electric water heater. Full internal bathroom with electric flushing toilet (external removable cassette), vanity sink with mirror & fully adjustable shower rose & shower curtain. External hot/cold RV Side Mounted Shower Tent.

**Kitchen** • Pull out stainless steel kitchen with cutlery drawer, hot/cold tap, large sink & AGA approved multi burner cooktop. Multiple storage compartments.

Bonus inclusions\*:

Electric Roof

Truma Under Floor Airconditioner

Internal fridge

Benchtop Wireless Mobile Phone Charger

Electric PVC waterproof awning: 4M x 2.4M

Multiple gas outlets to allow for kitchen plumbing & also a spare for a BBQ.

SMART TV with interior & exterior mounts & connections.

Fully enclosed canvas annex incl. roof, walls, floor, draft skirt. 450gsm

Stereo CD/DVD/MP5/USB/RADIO. Internal + External Speakers.

**Optional upgrades** • External Fridge/freezer.

**Closed Measurements** • 6670L x 2310W x 2210H

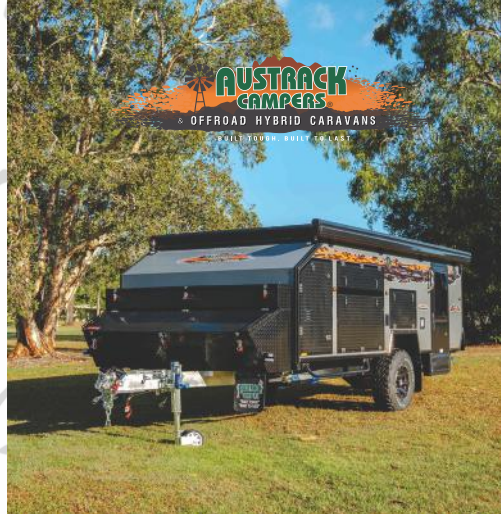
**Payload** • Approx. 870kg

**Tare weight** • Approx. 2130kg

**Registered** • 3000kg

**Ball Weight** • Approx. 225kg

**VIN plate** • All ready for registration



QLD • Caboolture • Rocklea • Townsville | NSW • Newcastle • Armidale  
VIC • Melbourne - Campbellfield | WA • Perth | SA • Adelaide

# 1800 797 797

sales@austrackcampers.com.au  
www.austrackcampers.com.au