

stylus

Prima II

Vitreous China 4.5/3 litre Dual Flush Close-Coupled Box Rim Toilet Suite



S trap pan pictured

A versatile close-coupled toilet suite featuring a 4.5/3 litre dual flush cistern with low profile chrome plated push buttons. The Prima II suite uses Smartflush technology to deliver water-saving technology in sanitaryware products. The 'S' trap pan can be used with the optional 40mm offset connector system which allows for an adjustable setout from 100mm to 180mm with a recommended setout of 140mm, thus providing installation versatility for both new build and renovation applications. The cistern is fitted with a quiet fast fill inlet valve as standard.

Pan: **Emerald** 4.5 litre full washdown close coupled pan.

Traps: S or P-trap unvented only.

Cisterns: **Prima Cistern** – has a free fitting lid and is suitable for domestic and light commercial applications. Available as a bottom inlet version only.

Important: Working pressure minimum 30kPa to maximum 1000kPa flow pressure. Rain water tank compliant.

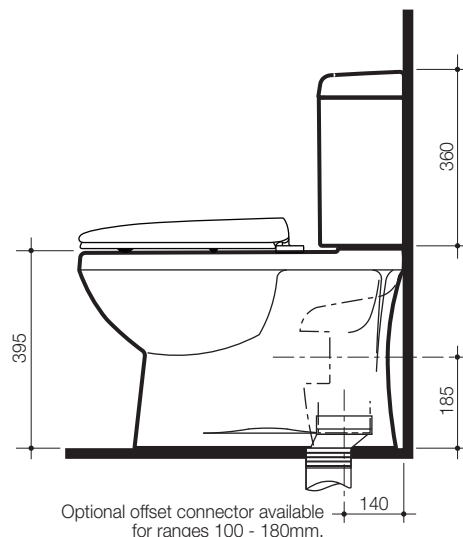
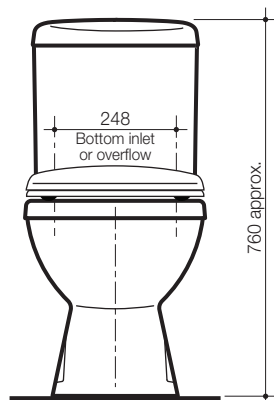
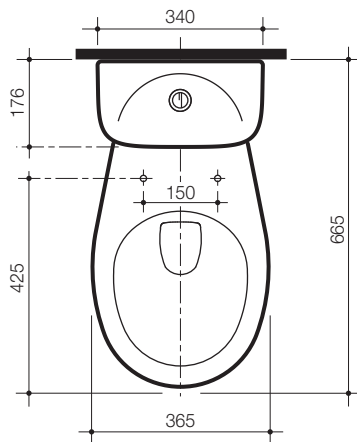
Fixing: The cistern is fixed directly to the pan with a robust concealed base fixing system without the need for wall fixing.

Seats: The Prima II suite is provided with either a **Profile Soft Close** die-cast hinge seat or **Profile** standard plastic hinge seat.

Colour: White only.

Installation: The installation of the toilet suite shall be in accordance with the normal minimum drainline grade requirements in AS/NZS 3500.2.

Dimensions: All dimensions are in millimetres and are subject to normal manufacturing variations. Caroma pursues a policy of continuing improvement in design and performance of its products. The right is therefore reserved to vary specifications without notice.



Prima II Close Coupled Toilet Suite with Seat:

	Code No.
S trap with Profile Soft Close die-cast hinge seat	PRI400SC
S trap with Profile standard plastic hinge seat	PRI400W
P trap with Profile Soft Close die-cast hinge seat	PRI450SC
P trap with Profile standard plastic hinge seat	PRI450W
40mm offset connector (Suitable to increase the setout from 100 to 180mm)	687270

Note: All height dimensions to underside of pan, make allowance for bedding.

Bedding: The pan should be fixed to the floor with a sand cement mixture of 3:1 to a depth of 60mm. Do not use lime or fast drying cement in the bedding mixture. When bedded the back of the foot of the pan should be approximately 10mm above the finished floor.

Screw fixing: The pan should be bedded with an acetic cured silicone sealant and fixed with corrosion resistant screws and pan guard washers. Screw fixing kit. Code No.601150.

Issue No. 1
Date of Issue: 05.04.13