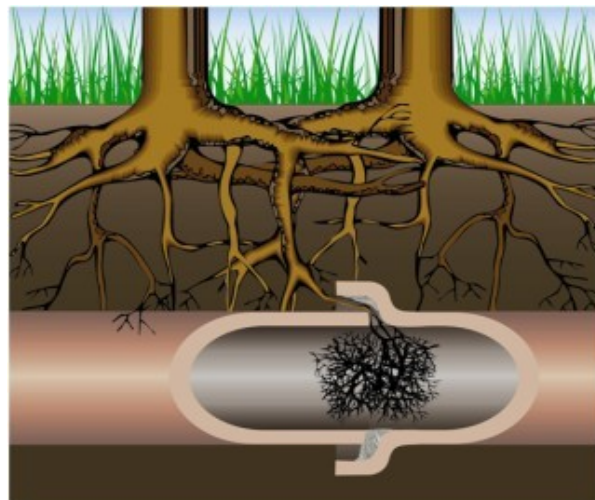


## Tree Root Blockages – An Introduction

Tree roots are the most common type caused of blocked drains that we come across here in Canberra, but many people aren't aware of just how damaging they can be to pipes, or how exactly a tree root infestation occurs.

Tree roots are attracted to your drains because they provide an excellent source of moisture and nutrients which the roots need to grow. This search for nutrients and water can see tree roots spanning vast distances, so even if you don't have trees in close vicinity to your home, it is still possible that tree roots are invading your drains.



### How do the tree roots get into the drain?



Tree roots can enter drains through cracks or joins in the pipe, and once in the drains thrive on the ideal growing environment they provide, with a continuous water and nutrient supply. Traditional clay pipes are more susceptible to tree root invasion as they generally consist of more joining sections between pieces of pipe, and tree roots enter into these joins and crack the pipes and they grow larger and thicker. Infestations can become so severe that they even collapse the pipes.

^Hello there! The beginning of a tree root invasion

To the right is a severe infestation which required the pipes to be replaced. These tree roots are so strong and have thrived so much inside the drain that they have maintained the shape of the pipe, even after the pipe was removed! ->



If you'd like to find out more, or if think you may have a tree root blockage in your drains,  
**contact us today on 6288 5123**

