

# PRODUCT RANGE

# STEEL-LINE

## GARAGE DOORS



Steel-Line has incorporated Italian design and innovation using quality BlueScope Steel in a range of finishes never before seen in Australia. Designed with value for money and quality in mind our DecoVogue garage door will add a whole new dimension to your home.



Steel-Line's innovative range of DecoWood® sectional garage doors combines the look and feel of genuine timber with the strength and security of steel. The result is a range of sectional garage doors which gives your home the stylish look of timber doors without the price tag and extensive maintenance requirement.



The Inspirations range is a stunning range of stylish finger safe aluminium frame garage doors with a wide selection of composite inserts for you to match with your home.



Our Classic Collection of sectional garage doors come with a full range of Dulux and Colorbond® colours and five classic styles (Ranch, Heritage, Slim-line, Glacier and Flat-line). Windows can be fitted to Ranch or Heritage styles in standard Colorbond® colours.



Easy to use and long lasting, Steel-Line roller doors can be made to suit most size garage openings. Combine a unique profile with first class materials, Steel-Line roller doors become some of the strongest, quietest and most reliable garage doors available.



Steel-Line cyclone door is designed with unique windlock / wind brace system. The superior strength and rigidity make them the best option for homes, sheds, commercial and industrial warehouses in high wind prone areas.



*Designing your own garage door has never been so easy!*

Simply upload a photo of your house to <http://steel-line.renoworks.com> and choose the style and colour you want, and then you can show off YOUR great design to your family and friends in a few minutes...

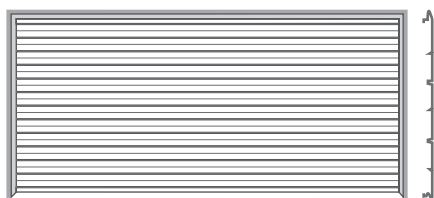
It's FREE, simple and so much fun!



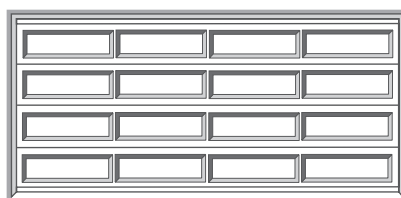
**DECO**<sup>®</sup> *Steel-Line's*  
**VOGUE** **DECOVOGUE<sup>®</sup> GARAGE DOORS**



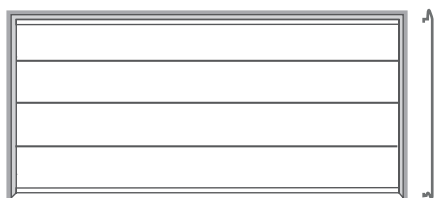
CHOOSE FROM THE STYLISH RANCH,  
 HERITAGE, SLIM-LINE, GLACIER OR  
 FLAT-LINE DESIGNS.



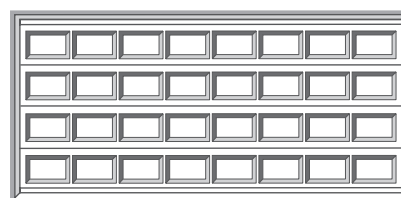
Glacier (Smooth or Textured Finish)



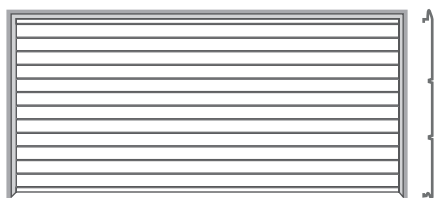
Ranch<sup>#</sup> (Textured Finish)



Flat-Line (Smooth\* or Textured Finish)



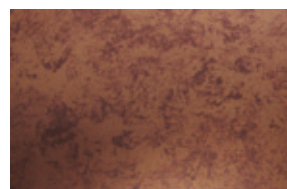
Heritage<sup>#</sup> (Textured Finish)



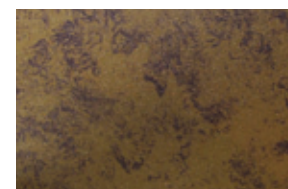
Slim-Line (Smooth\* or Textured Finish)

<sup>#</sup> Windows can be fitted to Ranch or Heritage designs in standard Colorbond<sup>®</sup> colours.  
<sup>\*</sup> Smooth finish Slim-Line and Flat-Line are only available for the Savannah range.

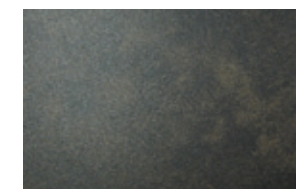
## SEVEN GREAT COLOURS TO CHOOSE



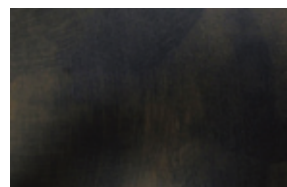
Copper



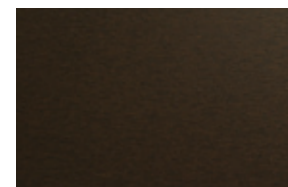
Cork



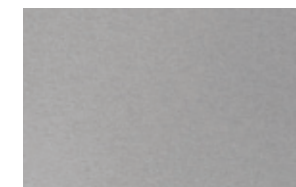
Lustre



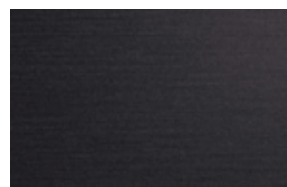
Rustic



Bronze



Platinum



Titanium

Please note: All colours shown in this book are a guide only. The limitations of printing processes make extremely accurate matches impossible. We strongly recommend comparing your choice with actual samples. Steel-Line reserves the right to vary or delete colours without notice.



**DECO**<sup>®</sup> *Steel-Line's*  
**WOOD** **DECOWOOD**<sup>®</sup> GARAGE DOORS

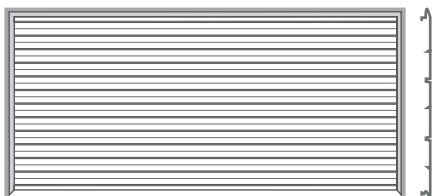




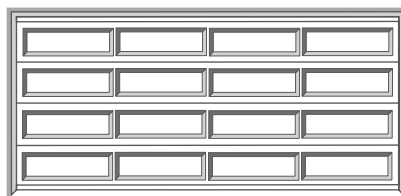
*Design your*

## DECOWOOD® GARAGE DOORS

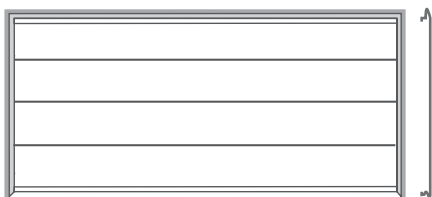
CHOOSE FROM THE STYLISH RANCH,  
HERITAGE, SLIM-LINE, GLACIER OR  
FLAT-LINE DESIGNS.



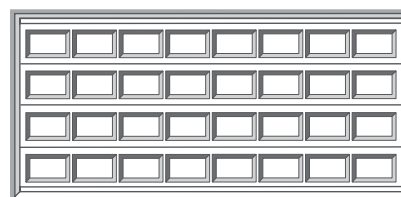
Glacier (Smooth or Textured Finish)



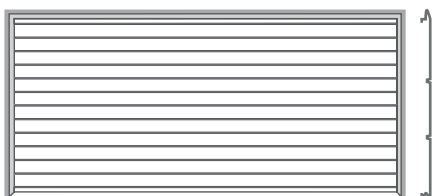
Ranch<sup>#</sup> (Textured Finish)



Flat-Line (Smooth\* or Textured Finish)



Heritage<sup>#</sup> (Textured Finish)

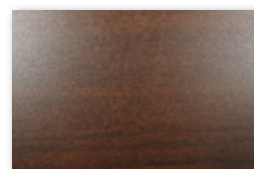


Slim-Line (Smooth\* or Textured Finish)

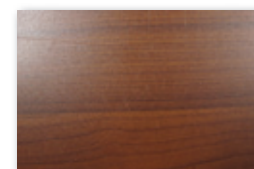
<sup>#</sup> Windows can be fitted to Ranch or Heritage designs in standard Colorbond® colours.

\* Smooth finish Slim-Line and Flat-Line are only available for the Savannah range.

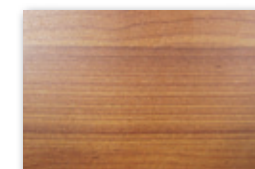
NINE GREAT HUES TO CHOOSE FROM



Ironbark



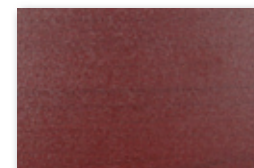
Western Red Cedar



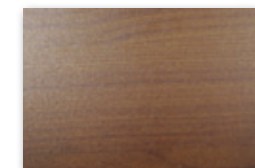
Casuarina



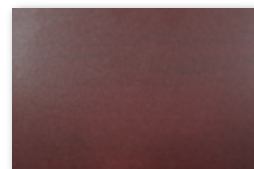
Snowgum



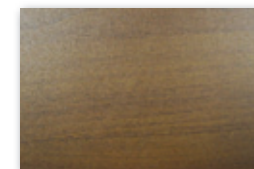
Rose Mahogany



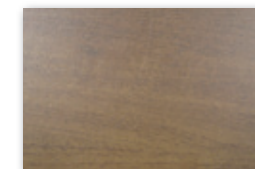
Bush Cherry



Jarrah



Chestnut



Kwila

Please note: All colours shown in this book are a guide only. The limitations of printing processes make extremely accurate matches impossible. We strongly recommend comparing your choice with actual samples. Steel-Line reserves the right to vary or delete colours without notice.





# INSPIRATIONS RANGE OF ALUMINIUM FRAMED SECTIONAL GARAGE DOORS





*Design your*

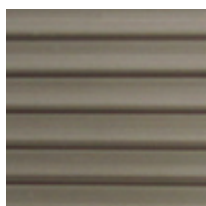
## INSPIRATIONS RANGE

# OF ALUMINIUM FRAMED SECTIONAL GARAGE DOORS

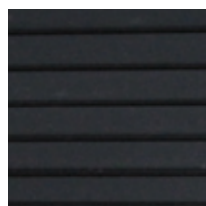
### INSERT COLOUR / MATERIAL OPTIONS



Polycarbonate - Silver Mist



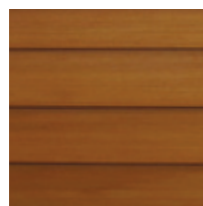
Polycarbonate - Light Bronz



Polycarbonate - Grey



Aluminium 1.6mm 5 Bar Treadplate



Western Red Cedar



Aluminium Composite - Metallic Silver



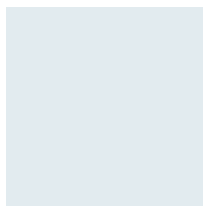
Aluminium Composite - Brushed Silver



Aluminium Composite - Champagne



Aluminium Composite - Medium Bronze



Acrylic - Opal



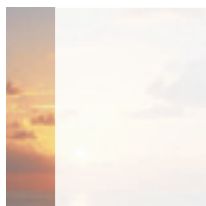
Acrylic - Black Gloss



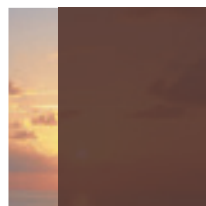
Acrylic - Grey



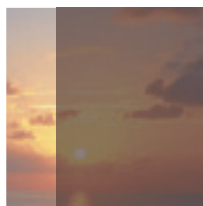
Acrylic - White Gloss



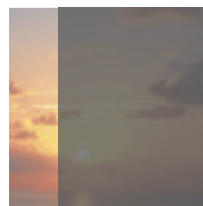
Acrylic - White (AN-422)



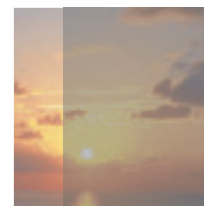
Acrylic - Bronze Tint (AN-458)



Acrylic - Bronze Tint (AN-2412)

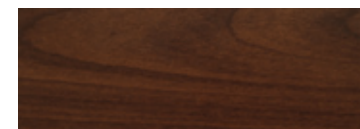


Acrylic - Grey Tint (AN-512)



Acrylic - Grey Tint (AN-2332)

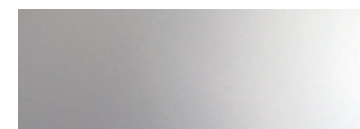
### FRAME COLOUR / MATERIAL OPTIONS



Timber Look



Black Powdercoat



Silver Anodise

Full Range Colorbond® Powdercoat Available Upon Request.



Finger Proof Safety

Please note: All colours shown in this book are a guide only. The limitations of printing processes make extremely accurate matches impossible. We strongly recommend comparing your choice with actual samples. Steel-Line reserves the right to vary or delete colours without notice.





# CLASSIC COLLECTION OF SECTIONAL GARAGE DOORS



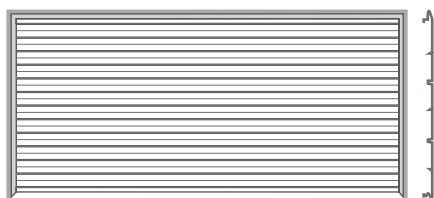




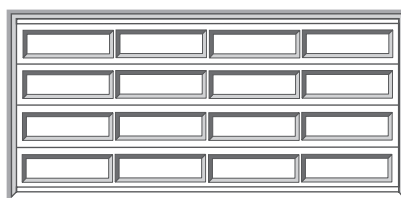
Design your

# CLASSIC COLLECTION OF SECTIONAL GARAGE DOORS

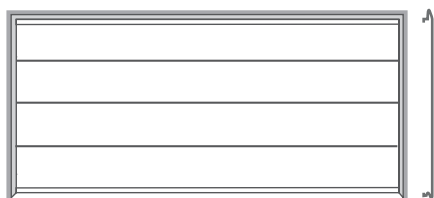
CHOOSE FROM THE STYLISH RANCH,  
HERITAGE, SLIM-LINE, GLACIER OR  
FLAT-LINE DESIGNS.



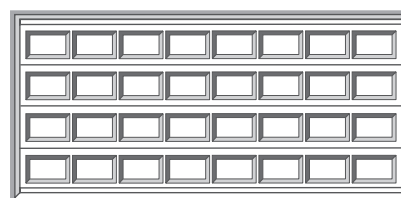
Glacier (Smooth or Textured Finish)



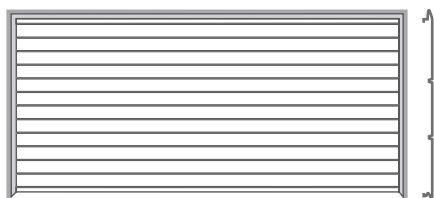
Ranch<sup>#</sup> (Textured Finish)



Flat-Line (Smooth\* or Textured Finish)



Heritage<sup>#</sup> (Textured Finish)



Slim-Line (Smooth\* or Textured Finish)

<sup>#</sup> Windows can be fitted to Ranch or Heritage designs in standard Colorbond® colours.

\* Smooth finish Slim-Line and Flat-Line are only available for the Savannah range.

Please note: All colours shown in this book are a guide only. The limitations of printing processes make extremely accurate matches impossible. We strongly recommend comparing your choice with actual samples. Steel-Line reserves the right to vary or delete colours without notice.

## 27 COLORBOND® COLOURS TO CHOOSE FROM



Also available in powdercoat colours

## WINDOW OPTIONS



RUSTON HERITAGE



SUNRAY X 8 HERITAGE



SUNRAY 2 X 4 HERITAGE



SHERWOOD 4 X 2 HERITAGE



STOCKTON HERITAGE



VENTILATION



RUSTON RANCH



SUNRAY X 4 RANCH



SUNRAY 2 X 2 RANCH



SHERWOOD RANCH



STOCKTON RANCH

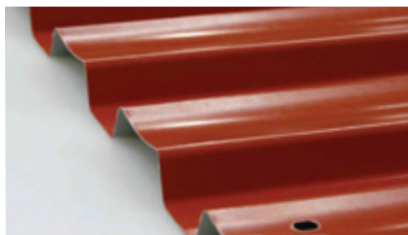


STOCKFORD RANCH

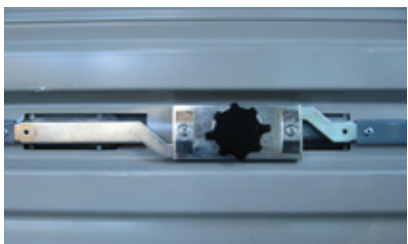




# Design your **ROLLER DOORS**



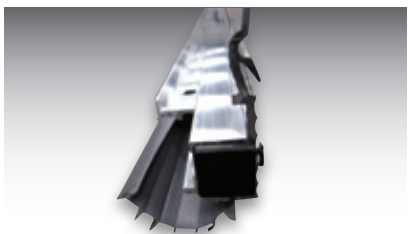
ROLL FORMED PROFILE



CENTRE LOCK



DUAL-SIDED NYLON WEBBING



ALUMINIUM BOTTOM RAIL (WEATHER SEAL)

## 26 COLORBOND® COLOURS TO CHOOSE FROM



Manor Red®



Terrain®



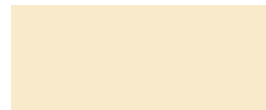
Jasper®



Sandbank®



Paperbark®



Classic Cream™



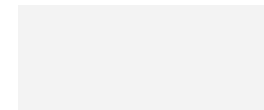
Evening Haze®



Dune®



Shale Grey™



Surfmist®



Windspray®



Bushland®



Cove™



Deep Ocean®



Monument®



Basalt™



Ironstone®



Pale Eucalypt®



Wilderness®



Cottage Green®



Wallaby™



Gully™



Mangrove™



Woodland Grey®



Night Sky®



Zincalume®

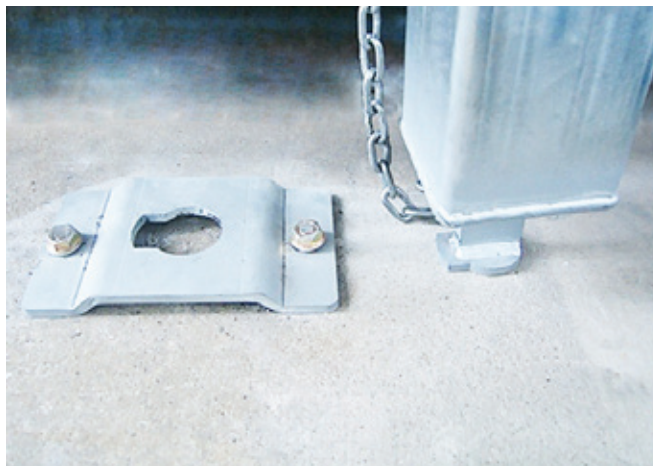
Please note: The colours shown are a guide only. The limitations of printing processes make extremely accurate matches impossible. We strongly recommend comparing your choice with actual samples. Additionally, Steel-Line reserves the right to vary or delete colours without notice.



## Wind Brace Sectional Garage Door



Typical Post to Strut Connection Details



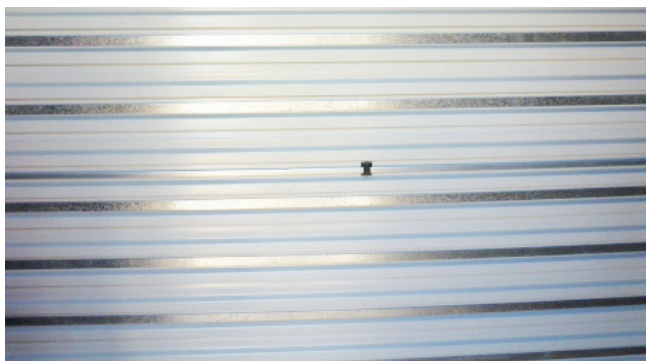
Locking Base Plate Fix to Floor

The Steel-Line Wind Brace system incorporates the use of removable steel wind brace post(s) that is installed to the garage door once a cyclone warning is received. It takes about 2-5 minutes to install, and no tools are required.

## Windlock Roller Door



A Moulded Lug



Windlock Roller Door Curtain

The Steel-Line Windlock system incorporates a moulded lug secured to the door curtain, which interlocks the matching shaped side-track. The design ensures smooth operation and minimises air infiltration enabling the roller door to withstand high force wind conditions and dramatically reducing the potential for the door to sustain damage and blow in.