

PAGE

01

FABRIC DETAILS

Specifications for Medi-Tech fabric



PAGE

02

SCRUB TOPS

Style options for scrub tops



PAGE

03

SCRUB PANTS

Style options for scrub pants

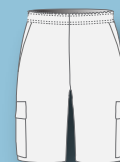


PAGE

04

SCRUB SHORTS

Style options for scrub shorts



PAGE

05

STYLE VARIATIONS

Variations including action back, contrast striping, piping and alternative pocket configurations



PAGE

06

COLOURS & SIZE CHARTS

Available stock colours and size charts






www.uniformswest.com.au

MEDI-TECH FABRIC



After extensive consultation with Western Australian hospitals, Uniforms West are proud to have introduced the new fabric '**Medi-Tech**' to the medical uniforms market.

-  **Exclusively owned by Uniforms West**
-  **Approved & endorsed by the Department of Finance**
-  **Meets CUA functional requirements**

FABRIC PROPERTIES THE MEDI-TECH ADVANTAGE



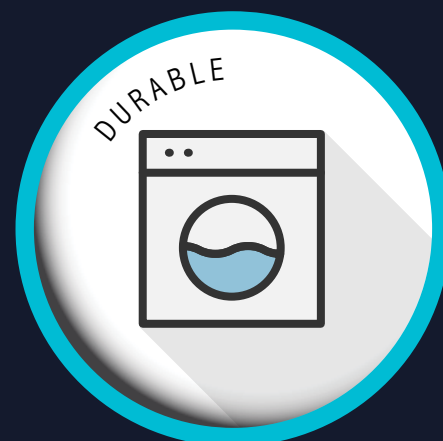
COMFORTABLE

65% Polyester and 35% Viscose. Soft to touch with natural stretch. Specially designed with comfort in mind. For medical professionals who require a large range of movements in their daily work.



LIGHTWEIGHT

At 190gsm, this fabric has been manufactured to be 'cooler' and 'lighter' to wear. Medi-Tech is air-permeable and provides good breathability.



EASY-LAUUNDER

Durable non-pilling fabric made to last despite heavy laundering. Can be laundered up to 60°. Exceptional colour fastness when exposed to light, moisture and dry cleaning.



MORE INFO:



08 9242 7232



info@uniformswest.com.au



www.uniformswest.com.au

SCRUB TOPS

UNISEX TOP

* Y Neck Line & Chest Panel
can be in contrast or same colour

*Available in several colours, pocket
variations, with or without side splits and
action back*

WA003



UNISEX SET-IN TOP

* Set-in sleeves
* Y Neck Line & Chest Panel
can be in contrast or same colour

*Available in several colours, pocket
variations, with or without side splits and
action back*

WA0036



UNISEX 'V' TOP

* Set-in sleeves
* V Neck Line & Chest Panel
can be in contrast or same colour

*Available in several colours, pocket
variations, with or without side splits and
action back*

WA006



SCRUB PANTS

UNISEX PANTS

- * Unisex loose fit
- * Comfortable design
- * Elasticated waist with drawcord
- * 2 angled side pockets

Available in several colours and in short or long lengths



WA004



UNISEX CARGO PANTS

- * Unisex loose fit
- * Comfortable design
- * Elasticated waist with drawcord
- * 2 angled side pockets
- * 2 covered cargo pockets

Available in several colours and in short or long lengths



WA004CP



Covered Cargo Pockets

SCRUB SHORTS

WA0045

UNISEX SHORTS

- * Unisex loose fit
- * Comfortable design
- * Elasticated waist with drawcord
- * 2 angled side pockets

Available in several colours and in short or long lengths

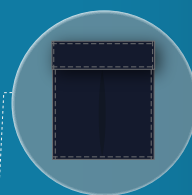


WA0045CP

UNISEX CARGO SHORTS

- * Unisex loose fit
- * Comfortable design
- * Elasticated waist with drawcord
- * 2 angled side pockets
- * 2 covered cargo pockets

Available in several colours and in short or long lengths



*Covered
Cargo Pockets*

PIPING

Piping on seams



ACTION BACK

For ease of movement



CONTRAST STRIPE IN NECKLINE

Split neckband to allow additional introduction of colours
(Width of the neckband remains the same)



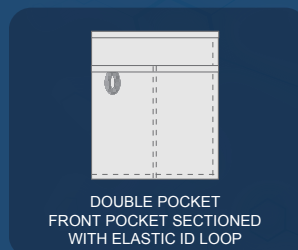
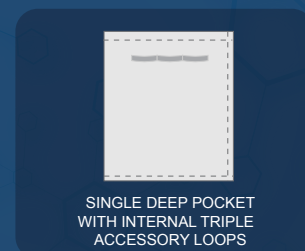
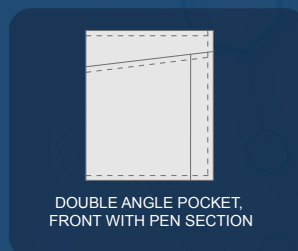
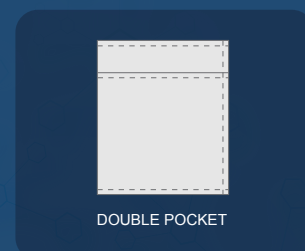
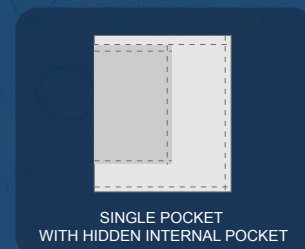
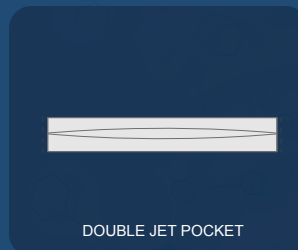
CHEST STRIPE ONLY

Chest contrast stripe only, available for WA0036 style



POCKET OPTIONS

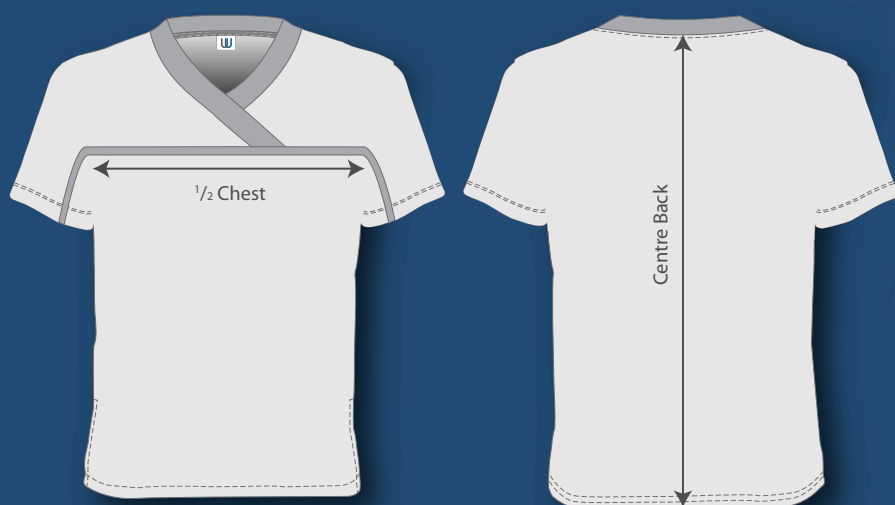
Various configuration of pockets
Placement on left or right chest or bottom of the garment



STOCK COLOURS



* Minimum Order Quantities Apply



SIZE CHARTS

Scrub tops can also be made to measure (MTM) to suit individual body shapes

WA003 & WA003RPH

	4XS	3XS	2XS	XS	S	M	L	XL	2XL	3XL	4XL	5XL	6XL
1/2 Chest	46	48	50	52	54	56	58	60	62	64	66	68	70
Centre Back	66	67	68	69	70	71	72	73	74	75	76	77	78
Shoulder Width	32	33	34	35	36	37	38	39	40	41	42	43	44
Hem Width	52	54	56	58	60	62	64	66	68	70	72	74	76

Finished garment measurements in centimetres

WA0036

	4XS	3XS	2XS	XS	S	M	L	XL	2XL	3XL	4XL	5XL	6XL
1/2 Chest	46	48	50	52	54	56	58	60	62	64	66	68	70
Centre Back	68	69	70	71	72	73	74	75	76	76	76	76	76
Sleeve Length	13.5	14	14.5	15	15.5	16	16.5	17	17.5	18	18.5	19	19.5

Finished garment measurements in centimetres

MORE INFO:



08 9242 7232



info@uniformswest.com.au



www.uniformswest.com.au



SIZE CHARTS

Available in three different lengths: Regular, Short and Long
Scrub pants can also be made to measure (MTM) to suit individual body shapes

WA004

	4XS	3XS	2XS	XS	S	M	L	XL	2XL	3XL	4XL	5XL	6XL
Outer Leg	97	99	101	103	105	107	109	111	113	115	115	115	115
Inner Leg	77	77.5	78	78.5	79	79.5	80	80.5	81	81.5	81.5	81.5	81.5
Waist Elastic (cut)	47	50	53	55	60	65	70	73	75	78	80	83	85
Hem Width	19	20	20	20	21	21	21	22	22	22	23	23	23

Finished garment measurements in centimetres

WA004 - SHORT (-5cm FROM THE LEG)

	4XS	3XS	2XS	XS	S	M	L	XL	2XL	3XL	4XL	5XL	6XL
Outer Leg	92	94	96	98	100	102	104	106	108	110	110	110	110
Inner Leg	72	72.5	73	73.5	74	74.5	75	75.5	76	76.5	76.5	76.5	76.5

Finished garment measurements in centimetres

WA004 - LONG (+5cm ON THE LEG)

	4XS	3XS	2XS	XS	S	M	L	XL	2XL	3XL	4XL	5XL	6XL
Outer Leg	102	104	106	108	110	112	114	116	118	120	120	120	120
Inner Leg	82	82.5	83	83.5	84	84.5	85	85.5	86	86.5	86.5	86.5	86.5

Finished garment measurements in centimetres