

# LABELLING OF INSULATED PANELS TO MEET REQUIREMENTS OF IPCA Ltd. 003:2012 CODE OF PRACTICE

Version 3.0



IPCA Ltd.  
Insulated Panel Council  
Australasia Ltd

## CODE DISCLAIMER AND WARNING

It should be noted that the solutions in this voluntary Code of Practice (CODE) cannot guarantee safety or outcomes for occupants, fire fighters, or owners of buildings in the event of a fire due to the unpredictable nature and behaviour of fire, and the many variables that affect fire behaviour which are outside the control or influence of the recommendations of this CODE.

It is not the intention of *Insulated Panel Council Australasia Ltd (IPCA Ltd.)* that this voluntary CODE be used as a guarantee of the products produced or workmanship of the members and final jurisdiction and responsibility for fire performance rests with the relevant authorities and Code Compliant Companies' manufacturers and installers.

The accuracy and reliability of the content and recommendations should be independently confirmed by the reader.

Failure to implement proper risk management may result in loss, damage or injury and this voluntary CODE does not claim to cover every precaution that is required to prevent the risk of fire in Insulated Panel Structures built in accordance with the CODE.

*Insulated Panel Council Australasia Ltd (IPCA Ltd.)* will not accept liability for any incident of damage or injury which may occur as a result of acting on the content or recommendations of this publication or voluntary Industry Code System.

*"Insulated Panel Council Australasia Ltd (IPCA Ltd.), has made every attempt to ensure the accuracy, completeness and suitability of the information presented in this CODE. Whilst every effort has been made to ensure accuracy, IPCA Ltd. does not guarantee that the information is complete or correct and no representation is made about the accuracy or completeness of the information and material and it should not be relied upon as a substitute for the exercise of independent judgment.*

*IPCA Ltd. will not be liable in any way whatsoever (including for negligence) for any loss, damage (including incidental, special or consequential damages), costs or expenses suffered, arising out of, or in any way connected with the CODE to the extent permitted by law".*

© Insulated Panel Council Australasia Ltd (IPCA Ltd.). ACN 152 384 659

# CONTENTS

	INTRODUCTION	4
1.0	KEY DIAGRAM	4
2.0	PANEL LABELS	4
3.0	NUMBER CODE COMPLIANCE PLATE	4
	BENEFITS OF CODE COMPLIANCE AND LABELLING	4
	APPENDIX A	5
	APPENDIX B	6
	APPENDIX C	7

# LABELLING OF INSULATED PANELS

## Version 3.0

### INTRODUCTION

Code of Practice Compliant structures will be identified with a labelling system. This system requires a key diagram, a numbered Compliance Plate, and Insulated Panels to be labelled with labels that identify Panel core types which are provided by the Code Facilitator. The Panel labels will be located at all doorways in the Code Compliant Areas of the facility. The purpose of the labels is to assist fire fighters and other interested parties such as Insurance Assessors, Managers and Fire Wardens in understanding the type of Panel and the fixing systems utilized in the construction of the facility and their locations. This will enable pre-incident planning and assessment of the likely performance of the systems utilized in particular locations throughout the facility to be more accurate.

The COP labelling system has the following three components:

#### 1.0 KEY DIAGRAM

A key diagram no less than A3 in size and indicating the type of Panels used in the walls and ceilings or roof, shall be located at the Fire Indicator Panel (FIP) along with the Code Compliance Plate (see Appendix C).

#### 2.0 PANEL LABELS

- (a) Labels A5 in size will be placed on each side of the doors in a central easily read location at eye level indicating the type of Panel used in the construction of the room which you are entering. Labels are to be attached both externally and internally in the case of an entry into a room from outdoors.
- (b) Labels will be UV resistant and suitable for wash down areas and will indicate:
  - (i) The type of Panel, the test method and result, and whether it is Code Compliant. The label will include the core material type and the BCA Group Classification from C1.10a of the BCA i.e. Group 1, Group 1 + Plus Code Compliant Group 2 (for existing sections only) FRL ..../.. and the stability and construction methods.
  - (ii) Test details - AS/ISO 9705, AS 1530 PT 4.
  - (iii) Identification for the following Panel Core types (see Appendix A for examples of labels):
    - EPS
    - EPS-FR
    - XPS
    - PIR
    - MRF
    - SPS
- (c) In regards to the application of the labels, other important aspects of the labelling systems include:
  - (i) Only Code Compliant Companies can apply labels which can be obtained only from the Code Facilitator and will be strictly controlled.

- (ii) Existing facilities or existing sections of facilities being extended can be made to be Code Compliant. In some circumstances, the facility can be retro fitted to become Code Compliant. The Panels used will have to be able to be traced and certified by a Code Compliant Manufacturer or the Panel tested to the satisfaction of the Code Facilitator and the Code Compliance Committee to prove that it is compliant.
- (iii) The number of labels required will depend on the number of rooms and the number of different Panel types used.
- (iv) Alterations must be carried out by a Code Compliant Company and recorded on the diagram and labels affixed to maintain ongoing Code Compliance.
- (v) In the event that the ceiling is of different Panel to the walls, a second label will be applied to the wall adjacent to the door indicating the type of Panel and its construction.
- (vi) The label will include the Code Compliance Logo and contact details.

#### 3.0 NUMBERED CODE COMPLIANCE PLATE

A numbered Code Compliance Plate will be fixed adjacent to the key diagram and will coincide with the Certificates (copies of the key diagram should be attached to the Certificate) and register, as well as the notice to the local fire services authorities (see Appendix B for example).

#### BENEFITS OF CODE COMPLIANCE AND LABELLING

- (a) Increases fire fighter confidence;
- (b) Reminds Building Owners and Tenants to manage occupancy and process risks;
- (c) Allows more accurate Risk Assessment;
- (d) Reminds owners to maintain the construction level to keep the existing performance level and not inadvertently alter the performance, during alterations and additions;
- (e) Encourages more active fire fighting;
- (f) Makes the building more insurable;
- (g) Reduces losses;
- (h) Presents a holistic plan to address the issues rather than a “One Fix” solution; and
- (i) Promotes a responsible collaboration between Regulators, Authorities, the Insulated Panel Industry, Insurance Companies and Insulated Panel facility users and owners.

# LABELLING OF INSULATED PANELS

Version 3.0

## APPENDIX A: GLOSSARY

Examples of Code Branding Labelling:

EPS Expanded Polystyrene

EPS-FR Expanded Polystyrene Fire Resistant

XPS Extruded Polystyrene

PIR Polyisocyanurate

MRF Mineral Fibre

SPS EPS Phenolic Hybrid (Syntactic)

**PANEL IDENTIFICATION**  
**PANEL GROUP: BCA C1.10**

**GROUP-1**

**CODE COMPLIANT: IPCA Ltd. 002:2011**

**GROUP-1+PLUS**

**CORE TYPE:**  

EPS-FR

**TESTED TO:**  
 AS/ISO 9705  
 AS 1530 PT 3/A

**IPCA Ltd.**  
**CERTIFIED INSTALLATION**

**p +61 7 3188 9120**

Panel Identification Label remains the property of IPCCA Ltd. and will be removed if not Code Compliant.

BCA Group

Code Compliant

Additional Measures

Core Type, see definition above

Tested to Australian and International Standards


Qualification Statement

<b>PANEL IDENTIFICATION</b> <b>PANEL GROUP: BCA C1.10</b> <b>GROUP-1</b> <b>CODE COMPLIANT: IPCA Ltd. 002:2011</b> <b>GROUP-1</b> <b>CORE TYPE:</b> <div style="font-size: 1.5em; font-weight: bold;">EPS-FR</div> <b>TESTED TO:</b> AS/ISO 9705 AS 1530 PT 3/A <b>IPCA Ltd.</b> <b>CERTIFIED INSTALLATION</b> <b>p +61 7 3188 9120</b> <small>Panel Identification Label remains the property of IPCCA Ltd. and will be removed if not Code Compliant.</small>	<b>PANEL IDENTIFICATION</b> <b>PANEL GROUP: BCA C1.10</b> <b>GROUP-1</b> <b>CODE COMPLIANT: IPCA Ltd. 002:2011</b> <b>GROUP-1</b> <b>CORE TYPE:</b> <div style="font-size: 1.5em; font-weight: bold;">MRF</div> <b>TESTED TO:</b> Non-Combustible AS 1530 PT 1 <b>IPCA Ltd.</b> <b>CERTIFIED INSTALLATION</b> <b>p +61 7 3188 9120</b> <small>Panel Identification Label remains the property of IPCCA Ltd. and will be removed if not Code Compliant.</small>	<b>PANEL IDENTIFICATION</b> <b>PANEL GROUP: BCA C1.10</b> <b>GROUP-1</b> <b>CODE COMPLIANT: IPCA Ltd. 002:2011</b> <b>GROUP-1</b> <b>CORE TYPE:</b> <div style="font-size: 1.5em; font-weight: bold;">SPS</div> <b>TESTED TO:</b> AS/ISO 9705 AS 1530 PT 3/A <b>IPCA Ltd.</b> <b>CERTIFIED INSTALLATION</b> <b>p +61 7 3188 9120</b> <small>Panel Identification Label remains the property of IPCCA Ltd. and will be removed if not Code Compliant.</small>	<b>PANEL IDENTIFICATION</b> <b>PANEL GROUP: BCA C1.10</b> <b>GROUP-2</b> <b>CODE COMPLIANT: IPCA Ltd. 002:2011</b> <b>GROUP-2</b> <b>CORE TYPE:</b> <div style="font-size: 1.5em; font-weight: bold;">EPS-FR</div> <b>TESTED TO:</b> AS/ISO 9705 AS 1530 PT 3/A <b>IPCA Ltd.</b> <b>CERTIFIED INSTALLATION</b> <b>p +61 7 3188 9120</b> <small>Panel Identification Label remains the property of IPCCA Ltd. and will be removed if not Code Compliant.</small>	<b>PANEL IDENTIFICATION</b> <b>PANEL GROUP: BCA C1.10</b> <b>GROUP-2</b> <b>CODE COMPLIANT: IPCA Ltd. 002:2011</b> <b>GROUP-2</b> <b>CORE TYPE:</b> <div style="font-size: 1.5em; font-weight: bold;">PIR</div> <b>TESTED TO:</b> AS/ISO 9705 <b>IPCA Ltd.</b> <b>CERTIFIED INSTALLATION</b> <b>p +61 7 3188 9120</b> <small>Panel Identification Label remains the property of IPCCA Ltd. and will be removed if not Code Compliant.</small>	<b>PANEL IDENTIFICATION</b> <b>PANEL GROUP: BCA C1.10</b> <b>GROUP-3</b> <b>CODE COMPLIANT: IPCA Ltd. 002:2011</b> <b>GROUP-3</b> <b>CORE TYPE:</b> <div style="font-size: 1.5em; font-weight: bold;">EPS-FR</div> <b>TESTED TO:</b> AS/ISO 9705 AS 1530 PT 3/A <b>IPCA Ltd.</b> <b>CERTIFIED INSTALLATION</b> <b>p +61 7 3188 9120</b> <small>Panel Identification Label remains the property of IPCCA Ltd. and will be removed if not Code Compliant.</small>
--	---	---	--	---	--

# LABELLING OF INSULATED PANELS

Version 3.0

## APPENDIX B: Numbered Code Compliance Plate

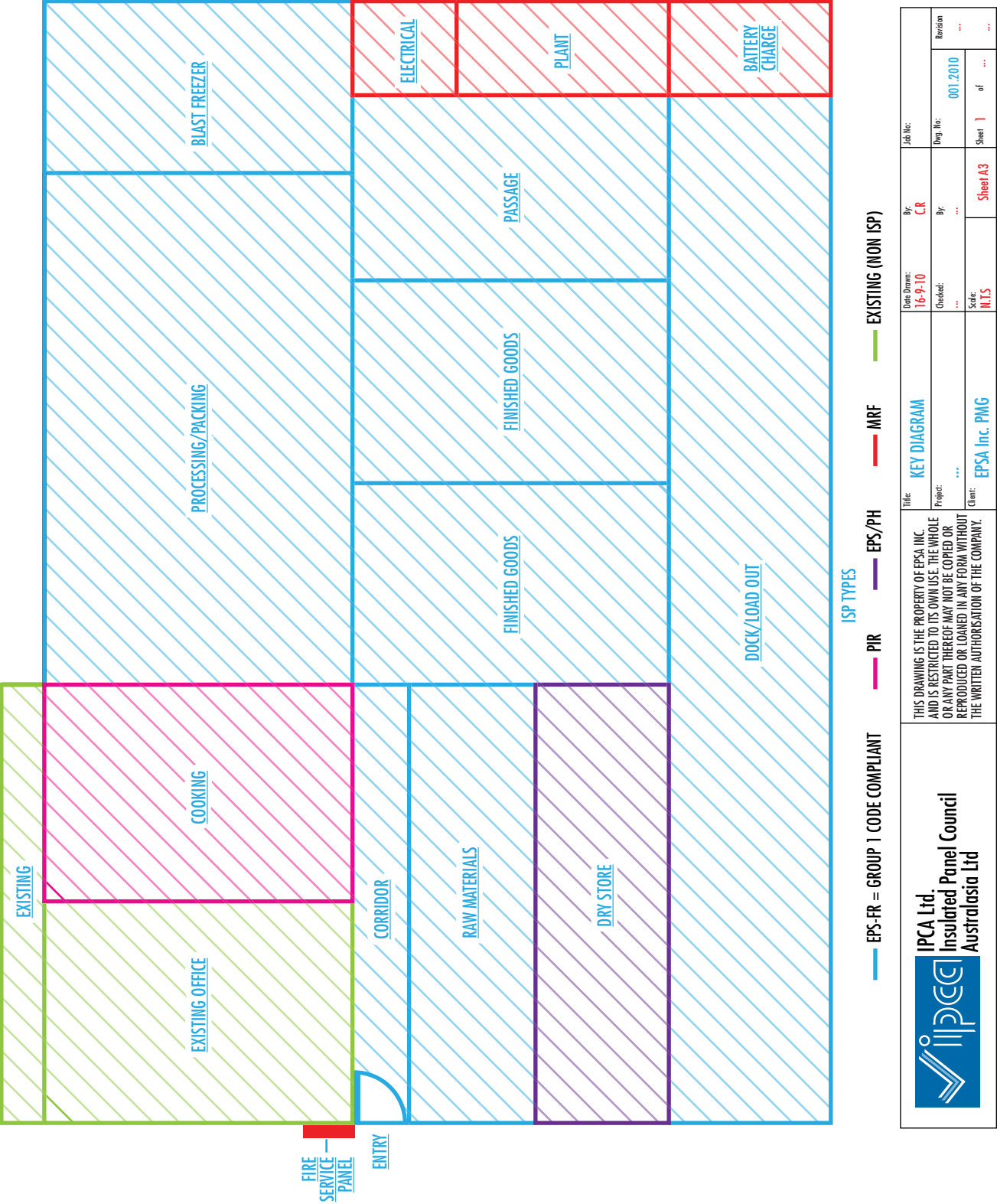
	<b>IPCA Ltd. CERTIFIED INSTALLATION</b>
<b>PROJECT NUMBER:</b>	Code Compliant Company's own project number.
<b>CODE COMPLIANT:</b>	Number allocated by the Code Facilitator, which will be on the plate when issued.
Certified Installation Plate remains the property of IPCA Ltd. and will be removed if not Code Compliant.	
Qualification Statement	

# LABELLING OF INSULATED PANELS

Version 3.0



## APPENDIX C: Example of Key Diagram





IPCA Ltd.  
Insulated Panel Council  
Australasia Ltd

phone: +61 7 3188 9120

mobile: 0419 644 924

email: [ceo@insulatedpanelcouncil.org](mailto:ceo@insulatedpanelcouncil.org)

website: [www.insulatedpanelcouncil.org](http://www.insulatedpanelcouncil.org)

Suite 5b Level 1, The Exchange  
88 Brandl Street, Eight Mile Plains, Qld 4113



IPCA Ltd. - PANEL  
CERTIFICATION SCHEME