



- ✓ Breakthrough innovative waterproof floor
- ✓ UniFit locking system
- ✓ Lifetime residential wear warranty
- ✓ Exclusive to Harvey Norman

# allure<sup>®</sup>

Add a splash of style to your floor

Exclusive to **Harvey Norman**<sup>®</sup>





**allure**  
LOCKING GEN 4

*Arezzo Natural*

## The most innovative waterproof vinyl plank.

When you are at the forefront of innovation, you need to continually improve your product to stay there. Whilst many thought it was impossible to improve Allure Locking Gen 3, we did it!

Allure Locking Gen 4 takes the 220mm wide plank and increases the length to 1520mm – this creates a floor with less joins which looks even more like a real timber floor and is even quicker to install.

Allure Locking Gen 4 has also incorporated cutting edge embossing technology to further create an authentic look timber floor. We have also increased the colours and grains to ensure there's an option for all tastes.

Over and over, others have tried to re-create Allure Locking Gen 4 without success – it is the original and the best – an ultra-stable, no glue, and no mess click together luxury vinyl plank.

Engineered to last, Allure Locking Gen 4 has passed all the tests for stability, durability and wear.

With a fibreglass inlay and quality materials used throughout, this is a high-class product which can be used in both commercial and residential settings. Its 0.5mm wear layer and UNILIN UNIFIT click locking system ensures it is at the pinnacle of LVT in Australia and throughout the world. The fact no pressure sensitive adhesive or glues are required makes this the ideal floor to lay over existing floors, where suitable, and to install with minimal mess.

Allure Locking Gen 4 takes the best features of all hard floors and combines them to make a “wonder floor”. Its embossed timber grain (or tile/stone look) is so realistic you can feel it. Unlike timber and laminate floors, it is waterproof, so accidents and spills are no concern. It is wide, it is long, and it is quality! What more could you ask for in a floor!

Available in both timber and stone looks, Allure Locking Gen 4 has an option to suit every room. Make your next floor Allure Locking Gen 4!

## The Wood Collection



NATURAL OAK



RIVEN OAK RED



GOTHAM OAK BROWN



AREZZO NATURAL



MYSTIC WALNUT GIZA



GOTHAM OAK SILVER



AREZZO MONTANA



MYSTIC WALNUT

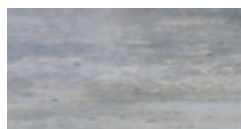


RIVEN OAK BEIGE

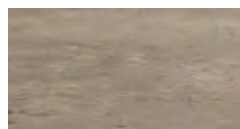
## The Tile Collection



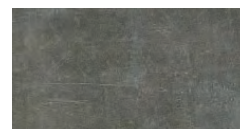
SILVER BETON



GREY BETON

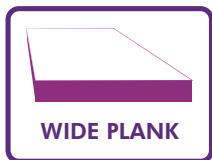


TAN BETON



SCRATCH CONCRETE GREY

## Why Allure Locking Gen 4?



## Specifications

### Wood Collection

Dimension	1520 x 220 x 5mm
Plank per box	6 planks
Pack size	2.m2 per box

### Tile Collection

Dimension	605 x 304 x 5mm
Plank per box	10 planks
Pack size	1.84m2 per box

### Other Specifications

Wear layer	0.5mm
Joining system	UniFit locking
Coating	CB (ceramic bead)
Warranty	Lifetime residential 5 year light commercial

## The UniFit System Technology

The UniFit system technology is an easy and extremely effective locking system. Install in just three simple steps: *Angle, Press and Tap the boards into place!* See in store for full installation



1

2

3





**allure**  
LOCKING 220

Vinyl Artic

## Extra-wide Resilient Flooring.

Allure Locking 220 features an innovative wide plank for more of a natural oak look in your home and office area.

Allure Locking 220 has a luxurious and deep embossed surface offering the most realistic look and feel of a timber floor. With its deep embossed surface and a wider plank, Allure Locking 220 creates a prestige look and depth to any room.

The definition extends to the raw knots and grains that have made oak flooring the leading specie of timber inspiration being utilised today. In both commercial shop-fits and family homes it seems everyone fall in love with the natural appeal of our oak floor.

Allure Locking 220 also comes with a full lifetime residential warranty and 5 year light commercial warranty. It is quite easy to install and completely waterproof.

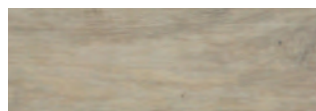
## Specifications

Dimension	1210 x 220 x 5mm
Plank per box	7 planks

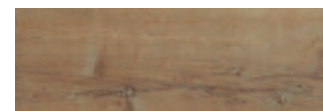
### Other Specifications

Wear layer	0.5mm
Pack size	1.86m per box
Joining system	UniFit locking
Coating	CB (ceramic bead)
Warranty	Lifetime residential 5 year light commercial

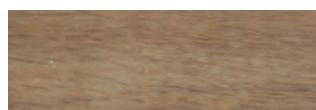
## The Collection



GOLDEN OAK WHITE



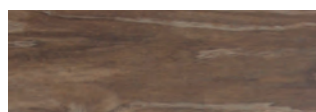
GOLDEN OAK WHEAT



GOLDEN OAK MOCHA



GOLDEN OAK NATURAL



SMOKED OAK TAN

## Why Allure Locking 220?



# Live life worry free with Nouvelle

Allure Nouvelle is a great value for money solution for your residential home.

Available in 3 popular colours, Allure Nouvelle planks look and feel like wood, and have a WATERPROOF surface that allows it to be installed in areas that traditionally have been off limits for traditional wood flooring and laminate products, like basements and bathrooms.

Constructed with a glueless DropLock installation system, Allure Nouvelle is the ultimate “do it yourself” product that is flexible so that allows the planks to be installed over existing floors such as concrete, vinyl and timber.

Allure Nouvelle is comfortable under foot, warmer in winter and cooler in summer, rest easy as it also comes with a lifetime residential warranty.

## Specifications

Dimension	1210 x 190 x 5mm
Plank per box	8 planks

### Other Specifications

Wear layer	0.15mm
Pack size	1.84m <sup>2</sup> per box
Joining system	Droplock 100
Coating	CB (ceramic bead)
Warranty	10years residential

## The Collection



SALIX HONEY



CINNAMON



SALIX SIENNA

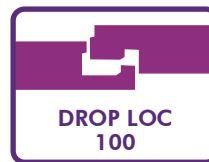
## Why Allure Nouvelle?



COMPLETELY  
WATERPROOF



REAL WOOD  
LOOK



DROP LOC  
100



QUIET  
UNDERFOOT

allure  
**Nouvelle**

Salix Honey



# CARE & MAINTENANCE

**Allure flooring is one of the easiest floors to maintain. Please follow the recommendations in this guide to maintain and protect your Allure flooring.**

## PREVENTIVE MAINTENANCE:

1. Use NON-RUBBER protective mats in front of any doors leading to the outside. This helps keep the sand and grit from getting on to your floors. Gritty sand in any floor covering is your worst enemy.

2. Install proper floor protectors (felt preferred) on all furniture legs used on resilient flooring. Protectors will allow chairs to move easily over the floor without scuffing or scratching. Clean protectors on a regular basis to remove any grit that may have become embedded on the bottom of the furniture leg. For any swivelled type office chairs and other rolling furniture, please install 5cm wide non-staining flat casters. Do not use rubber casters.

3. To keep your floor looking its best, dust mop or vacuum your floor at least twice a week. Do it more often on floors with heavy traffic. Do not use a household dust cleaner of any kind as this may cause the floor to become slick or damage the finish. Simply sweep the floor as often as needed.

4. Do not allow pets with unclipped nails to damage your Allure floor. It may result in severe scratching to the surface. The same is true for any high heeled shoes that do not have proper tips on the heels.

5. Avoid exposure to direct sunlight for prolonged periods of time. During peak sunlight hours, use drapes or blinds to minimize the direct sunlight on the Allure floor. Most types of flooring will be affected by continuous strong sunlight. To avoid an uneven appearance, please consider relocating any area rugs from time to time. In addition, excessive temperatures are not good for resilient floors. Some natural ventilation or intermittent air conditioning in vacant homes should be considered. Long term continuous inside temperatures over 35°C combined with strong direct sunlight will damage your Allure floor and cause the installation to fail.

6. Do NOT use a steam cleaner on Allure flooring as it may result in permanent damage to your floor and will void the warranty.

## REGULAR MAINTENANCE:

1. Food spills should be cleaned up as quickly as possible with a quality liquid vinyl cleaner. Make sure the cleaner you choose is an all purpose liquid cleaner that is NON-ABRASIVE.

We do not recommend powdered cleaners, oil soaps, dishwashing detergents, or other dusting products. Try to use a non-rinsing, biodegradable cleaner that leaves no residue or haze and requires no rinsing after application.

2. Shoe marks and scuffs can be easily removed using a spot application on your non-abrasive cleaner and a green Scotch Brite pad.

3. Regular household dirt can be cleaned with a neutral vinyl cleaner applied as indicated on the product label. Some hand wiping may be required to remove tough spots and spills. Always sweep or vacuum your Allure floor before cleaning so that all loose dirt and particles are removed. For best results do not use combination cleaner/finish products.

4. DO NOT WAX YOUR ALLURE FLOOR! The surface of your Allure floor is very dense and non-porous; this prevents wax from penetrating and thus will build up a bed for yellowing and dirt collection. The same non-porous feature also provides all the protection against wear and staining that you will need.

5. If your floor has been exposed to excessive amounts of water due to flooding, don't panic, ALLURE LOCKING GEN 4 and ALLURE LOCKING 220 are WATERPROOF! Simply remove the water as quickly as possible with a Wet-Vac or other device and ventilate the room. A dehumidifier should be promptly turned on in the room to reduce the moisture levels back to normal. Do not dry the room below the normal moisture level that existed previously.

6. If accidental deep scratches appear on your floor then it might be necessary to replace such damaged planks.

7. If the scratches are fine and the result of normal household use, then it is recommended only to fill them with one or two coats of a matte floor finish.







*Allure Locking Gen 4 Tile - Silver Benton*

# allure<sup>®</sup>

Allure is the ultimate stylish and affordable flooring solution for creating your dream decor. For more information, talk with your local Harvey Norman Flooring or visit us online at [www.harveynorman.com.au](http://www.harveynorman.com.au).

Exclusive to **Harvey Norman**<sup>®</sup>

Be inspired and learn more at  
[harveynormanflooring.com.au](http://harveynormanflooring.com.au)

