

# product guide

AUSTRALIAN EDITION MAY 2013



**Your sustainable  
water supply**





# Rain Harvesting – Your Own Sustainable Water Supply

**Whether in drought or in bloom, we need to find better ways of using water. Rain Harvesting is a manufacturer and wholesaler of sustainable water products intent on helping people build sustainable futures.**

We believe it makes sense to catch pure, fresh, free rainwater from the sky and have developed a **complete system of products for rainwater collection**. Used in conjunction with rainwater tanks, the products are relatively maintenance free, simple in their operation and help ensure rainwater harvesting systems deliver superior results.

**Rainwater Harvesting** involves the collection, storage and distribution of rainwater from the roof, for use inside and outside the home or business, and **is the most efficient water supply solution** for our communities' water problems.

- 1 Start saving water now!** Rainwater Harvesting reduces water usage **in every household**. Run-off from the roof to the tank is immediate and efficient, whereas run-off in vegetated dam catchments requires significant rainfall to impact on dam levels. You can take control and make a difference today!
- 2 Safe, sustainable water.** Rainwater is naturally pure and fresh. It is not recycled water. Provided certain precautions are taken, research supports rainwater as a safe, sustainable source of water that can meet all of a household's requirements.
- 3 Significant cost savings – for the community and each household.** Widespread adoption of rainwater harvesting reduces our need for expensive water supply infrastructure and our dependence on dams and other water treatment and supply facilities.
- 4 Protect local waterways and reduce stormwater infrastructure costs.** By capturing and utilising rainwater where it falls, rainwater harvesting reduces both the volume and velocity of stormwater run-off from our urban areas. This helps protect our waterways and reduces the need for expensive stormwater infrastructure.

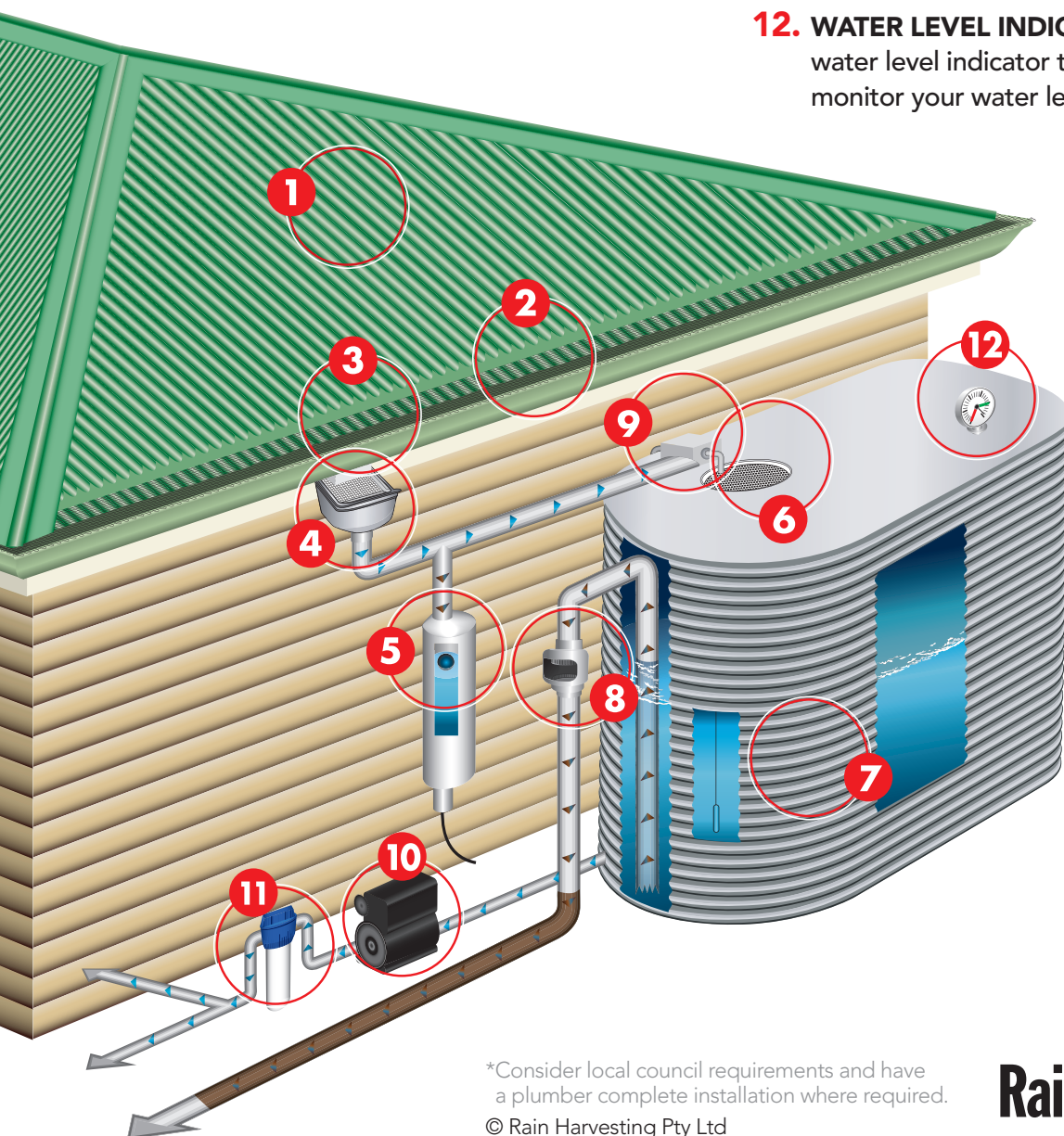
**Visit [www.rainharvesting.com.au](http://www.rainharvesting.com.au) for more information**

Tel: (07) 3248 9600 | Fax: (07) 3041 3588 | [info@rainharvesting.com.au](mailto:info@rainharvesting.com.au)



# How to Create the Complete Rain Harvesting System

1. Check **ROOF SURFACE** is suitable for collecting quality rainwater.
2. Install **GUTTER MESH** (such as Blue Mountain Mesh®) to prevent leaves and debris from blocking gutters.
3. Fit **GUTTER OUTLETS** from the underside of the gutter to prevent obstruction of water flow.
4. Fit Leaf Eater® or Leaf Beater® **RAIN HEADS** to downpipes to prevent blocking. Rain Heads deflect leaves and debris and keep mosquitoes out of pipes that hold water ('wet' systems).
5. Install **FIRST FLUSH DIVERTER/S** to help prevent the most contaminated rainwater from entering the tank.
6. Ensure a **TANK SCREEN** is installed at tank entry point to keep mosquitoes and pests out.
7. Choose a **WATER TANK**. Consider annual rainfall, roof catchment area and water usage when determining its size.
8. Attach **INSECT PROOF SCREENS** or **FLAP VALVES** to the end of all pipes to the tank screen to keep mosquitoes and pests out and ensure the tank is vented properly. Install an **AIR GAP** to **TANK OVERFLOW OUTLETS** to prevent stormwater backflow into your tank.
9. Utilise a **TANK TOP UP** system (if required) to automatically top up the tank with mains water when levels fall to a designated minimum level.
10. Select a **PUMP SYSTEM** (if required) to distribute water for use inside or outside the home.
11. **RAINWATER FILTER**. Fit a purpose designed rainwater filter after the pump to help reduce residual sediment, colour and odour.
12. **WATER LEVEL INDICATOR**. Install a Tank Gauge water level indicator to your rainwater tank to monitor your water level and usage.



- Improve Water Quality
- Reduce Tank Maintenance
- Increase Catchment Efficiency
- Protect Pumps and Household Appliances

\*Consider local council requirements and have a plumber complete installation where required.  
© Rain Harvesting Pty Ltd



# Technologies

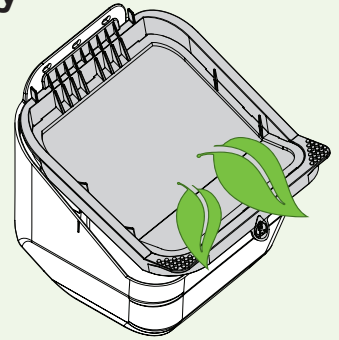
## Patented Technology



(Patented)

### Patented Next Generation Technology for Advanced Debris Shedding

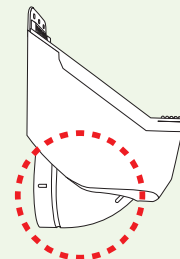
- Minimal maintenance
- Directs leaves & debris away from the flow of water
- 0.955mm aperture stainless steel mosquito proof screen
- Single screen for easy installation and maintenance
- Superior flow rate performance
- High catchment efficiency maximises collection of water during low and high rainfall



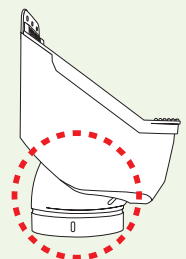
(Patent Pending)

### VH Pivot Outlet Makes Installation Easy

- Pivot the outlet to suit either vertical or horizontal (rear outlet) downpipes
- Easy to adjust manually
- Rubber o-ring for a water tight seal



Horizontal Position



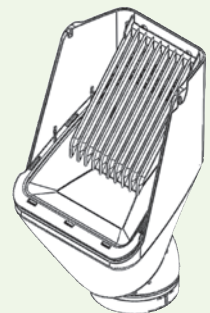
Vertical Position



(Patent Pending)

### Innovative Filtration & Debris Shedding Technology

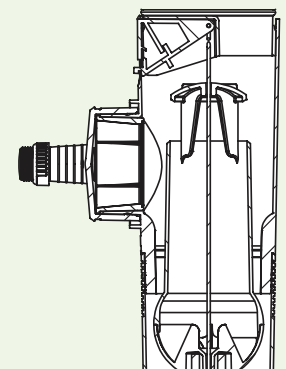
- Innovative Rain Head technology
- The Leaf Slide deflects debris away from the screen
- Precisely angled vibrating screen directs leaves and debris away from the flow of water to maximise catchment efficiency



(Patent Pending)

### Break Through First Flush Technology

- Compact inline first flush diverter – no additional chamber required
- Automatically diverts the first flush of water from the roof (which contains contaminants such as dirt, dust, bird droppings and insects) directly to the stormwater
- The self regulating valve adjusts to divert the optimum volume of first flush based on the intensity of the rainfall
- Built in safety overflow to stormwater
- Resets in approximately 72 hours to maximise catchment during periods of intermittent rainfall



# Rain Heads

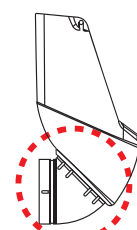


## The Ultimate in Innovation, Design and Performance

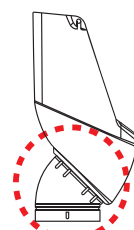
- This Rain Head is a combination of a modern, sleek design and the latest Rain Head technology – the ultimate in Rain Heads
- Integrated cover and cap to compliment both modern and classic architecture
- Leaf Eater Ultra™ uses the Leaf Slide and a precisely angled screen to deflect debris off the screen, for high flow rate performance. (Hydro Activated Filtration™ technology)
- A single mosquito proof stainless steel mesh screen with 0.955mm aperture
- Minimal maintenance required
- Pivot the outlet to suit vertical or horizontal (rear outlet) downpipes (VH Pivot™)
- Maximises the catchment efficiency at low and high flow rates
- Multi-fit cap – 90mm, 100mm, 100mm x 75mm and 100mm x 50mm



► Hydro Activated Filtration Technology (Cover removed)



Horizontal Position



Vertical Position

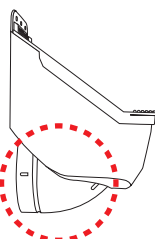


Description	Code
Leaf Eater Advanced™	
90mm	RHAD01
100mm	RHAD02

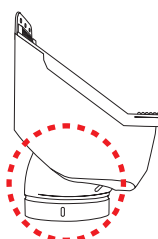


## The Next Generation in Rain Heads

- A compact, versatile Rain Head for quick and easy DIY installations
- Patented single screen technology for advanced debris shedding (Clean Shield™)
- Minimal maintenance
- Pivot the outlet to suit vertical or horizontal (rear outlet) downpipes (VH Pivot™)
- High flow rate performance
- Superior catchment efficiency at low and high flow rates
- A single mosquito proof stainless steel mesh screen with 0.955mm aperture



Horizontal Position



Vertical Position



# Rain Heads



## The Original High Performance Rain Head – now with Enhanced Performance

- Upgraded with new debris shedding single screen technology (Clean Shield™)
- Minimal maintenance
- Enhanced flow rate capacity
- Superior catchment efficiency at low and high flow rates
- A single mosquito proof stainless steel mesh screen with 0.955mm aperture

Description	Code
Leaf Eater® Original with Clean Shield™	
90mm	RHLE08
100mm	RHLE09



## Proven and Trusted for over 17 years

- The original high performance Rain Head
- Improved maintenance with new, easy to use screen clips
- Two screen technology:
  - Self shedding 6mm aperture screen for large debris
  - A single mosquito proof stainless steel mesh screen with 0.955mm aperture is fitted with a secure "locking system"
- High flow rate performance
- Superior catchment efficiency at low and high flow rates

Description	Code
Leaf Eater® Original	
90mm	RHLE01
100mm	RHLE06

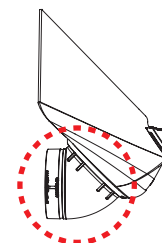
Compliance – Australian Standard AS/NZS 4020:2005  
(Testing of products for use in contact with drinking water)



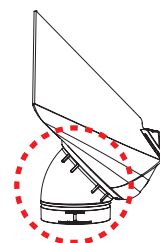
## Compact Rain Head with Enhanced Performance

- Patent single screen technology for advance debris shedding (Clean Shield™)
- Pivot the outlet to suit vertical or horizontal (rear outlet) downpipes – variety of installation options in one product.
- Enhance catchment efficiency – collect more rainwater
- Minimal maintenance
- Higher flow rate performance
- Compact design suits smaller spaces
- A single mosquito proof stainless steel mesh screen with 0.955mm aperture

Description	Code
Leaf Beater® with Clean Shield and VH Pivot	
90mm	RHLB20
100mm	RHLB21



Horizontal Position



Vertical Position

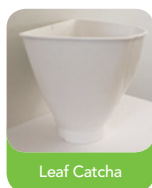


# Rain Heads



## Versatile Leaf and Debris Catcher

- Great value "bucket style" Rain Head
- Ideal rainwater tank overflow catchment product
- A single mosquito proof stainless steel mesh screen with 0.955mm aperture is fitted with a secure "locking system"
- Easy to remove for maintenance
- High flow rate performance
- Superior catchment efficiency at low and high flow rates



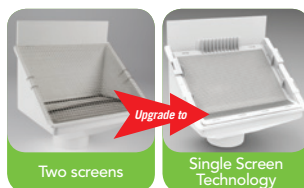
Leaf Catcha

Description	Code
Leaf Catcha™	
90/100mm Dual Fit	RHLC20



## Upgrade for Low Maintenance with Superior Performance

- Upgrade Screens available for Leaf Eater® Original Rain Heads
- Patented single screen technology for advanced debris shedding (Clean Shield™)
- Easy to install and minimal maintenance
- Enhances catchment efficiency and flow rate by deflecting debris away from the flow of water
- A single mosquito proof stainless steel mesh screen with 0.955mm aperture
- Increases flow rate performance



INSTALLATION IS AS EASY AS SWAPPING SCREENS

Description	Code
Leaf Eater Upgrade Screen	
Upgrade Screen	RHAC01



## Upgrade for Low Maintenance with Superior Performance

- Upgrade Screens available for Leaf Beater® Original Rain Heads
- Patented single screen technology for advanced debris shedding (Clean Shield™)
- Easy to install and minimal maintenance
- Enhances catchment efficiency and flow rate by deflecting debris away from the flow of water
- A single mosquito proof stainless steel mesh screen with 0.955mm aperture
- Increases flow rate performance



INSTALLATION IS AS EASY AS SWAPPING SCREENS

Description	Code
Leaf Beater Upgrade Screen	
Upgrade Screen	RHAC02





# First Flush Water Diverters



## Downpipe First Flush Water Diverter

- A Downpipe First Flush Water Diverter takes the first flow of water which may contain contaminants from the roof and gutters, seals it off, then automatically diverts the flow to the tank
- A slow release valve ensures the chamber empties itself after rain and resets automatically
- Ideal to use in conjunction with a rain head
- Improves water quality, protects pumps and internal appliances
- Supplied in kit form – just add the appropriate length of pipe based on the quantity of water you require to divert

Description	Code
<b>Downpipe First Flush Water Diverters*</b>	
90mm	WDDP01
100mm	WDDP02
150mm	WDDP03

\*Available at an extra cost:

- (1) Optional Stainless Steel Primary Screen (Product Code: WDAC02);  
 (2) 90mm Plastic Pipe Bracket set – ideal for under eaves installations (Product Code: WDAC10).



## Post/Wall/Stand Mounted First Flush Water Diverter

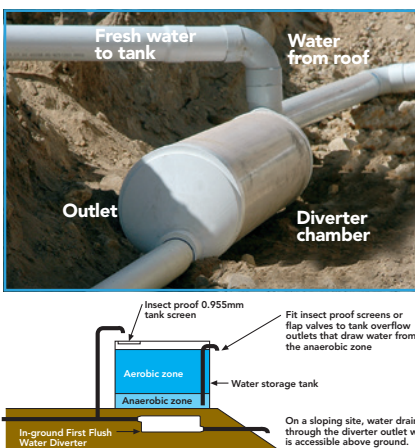
- A versatile unit that can be mounted on a wall, post or stand, to hold larger volumes of water
- It can be adapted to suit a wide range of applications and will manage single or multiple pipes coming from the roof to divert between 20 and 150L of water
- The kit is easy to freight, and the diverter volume can be made on site to match exact requirements – just add the appropriate length of 300mm pipe
- The kit includes a saddle and a galvanised steel wall mounting bracket
- A galvanised steel stand is an optional alternative to post or wall mounting
- Improves water quality, protects pumps and internal appliances

Compliance – Australian Standard AS/NZS 4020:2005  
 (Testing of products for use in contact with drinking water)

Description	Code
<b>Post/Wall/Stand Mounted First Flush Water Diverter</b>	
300mm Post/Wall Mounted (Inlet fits 90mm pipe or 100mm female fitting)	WDPW01
300mm Galvanised Steel Stand#	WDAC01
300mm PVC Pipe	WDAC09

#Order In-Ground kit (WDIG01) if stand is required

Volume to Divert		Pipe	Diverter Height
Litres	Length (mm)	Total Height required (mm)	
20	225	590	
30	365	730	
40	500	865	
50	630	995	
60	780	1145	
70	905	1270	
80	1050	1415	
90	1180	1545	
100	1310	1675	
120	1610	1975	
130	1735	2100	
150	2005	2370	



## In-Ground First Flush Water Diverter

- Allows a 'wet' system to be converted into a 'dry' system
- Most systems are 'wet' due to the size of buildings, and the placement of tanks away from the buildings mean that there are long runs of pipe underground leading to a riser at the tank
- On a sloping site this diverter ensures the diverted water, and the water that would normally remain in the pipes, empties out
- The result – a 'dry' system that improves water quality
- Improves water quality, protects pumps and internal appliances

Compliance – Australian Standard AS/NZS 4020:2005  
 (Testing of products for use in contact with drinking water)

Description	Code
<b>In-Ground First Flush Water Diverter</b>	
300mm In-Ground (Inlet fits 90mm pipe or 100mm female fitting)	WDIG01

### Sizes (300mm DIAM. PIPE)

Length (m)	Volume (L) contained (approx.)
1.0	77
1.5	112
2.0	147
2.5	182
3.0	218
3.5	253
4.0	289
4.5	324
5.0	360
5.5	395
6.0	430

Plus (add) the volume of water held in the pipe section downstream of the Diverter, between the Chamber and the Flow Control Valve / Outlet. For every 1m of 100mm PVC pipe add 8L.



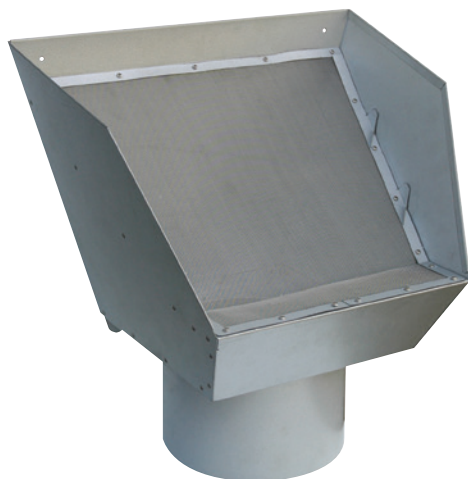
# Commercial Products



## Commercial Screened Rain Heads – 150mm and 225mm

Rain Heads prevent leaves and debris from blocking downpipes and entering the rainwater tank. They are ideal for fitting to each downpipe as they protect the building and improve the tank's water quality.

- High flow rate performance to match commercial requirements
- Patented single screen technology for advanced debris shedding (Clean Shield™)
- Minimal maintenance
- Superior catchment efficiency
- A single mosquito proof stainless steel mesh screen with 0.955mm aperture
- Available in Stainless Steel, ZINCALUME® or any of the 20 standard COLORBOND® colours



Description	Code
Leaf Eater Commercial Rain Heads	
150mm	RHCL01
225mm	RHCL30

### Compliance & Guidelines

- AS/NZS 3500.3:2003 – Plumbing and Drainage
- enHealth Council – Guidance on the use of rainwater tanks – preventing mosquitoes breeding
- Qld Health Regulations 1996 (Part 8 – Mosquito Prevention)



COLORBOND® and ZINCALUME® are registered trademarks of BlueScope Steel Limited.



## Commercial Downpipe First Flush Water Diverters – 150mm and 225mm

First Flush Water Diverters improve water quality and reduce tank maintenance by preventing the first flush of water, which may contain roof contaminants (such as sediment, bird droppings, spiders, insects, mosquito eggs and debris), from entering the tank. They help ensure cleaner water is available for use, which protects rainwater pumps and internal appliances. Commercial Downpipe First Flush Water Diverters are installed at the gutter downpipe or via a T-junction to a new or existing 150mm or 225mm downpipe.

### 225mm Diverter

- Utilises a dependable ball and flap system
- Easy installation
- Sold as a single unit, but can easily be coupled together to provide chamber size required
- No mechanical parts
- Kit all inclusive – just add pipe length and glue
- Low maintenance requirements – viewing window provided

### 150mm Diverter

- Utilises a dependable ball and seat system
- Easy installation
- No mechanical parts
- Kit all inclusive – just add pipe length and glue
- Low maintenance requirements

Description	Code
Commercial Downpipe First Flush Water Diverters	
150mm	WDDP03
225mm	WDCL30

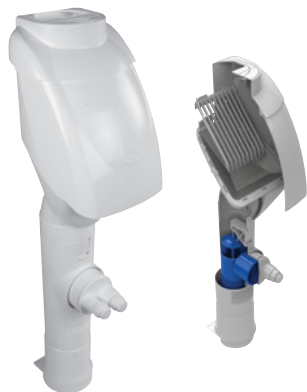
### Compliance & Guidelines

- QDC MP4.3 – Water Saving Targets (if connected to showers, wash basins, kitchens or hot water services)
- enHealth Council – Guidance on the use of rainwater tanks – preventing mosquitoes breeding
- Qld Health Regulations 1996 (Part 8 – Mosquito Prevention)



► 225mm Commercial Downpipe First Flush Water Diverter. The T-junction is installed connecting to the rainwater tank located inside the building.

# Rainwater Diverters



## The Premium Choice for Easy, High Quality Rainwater

- Break through Rain Head and First Flush Diverter technology in one easy to install product
- Cutting edge Rain Head technology uses the Leaf Slide and a precisely angled screen to deflect debris off the screen. (Hydro Activated Filtration™ technology)
- A unique sleek cover and cap provides a stylish, integrated look
- Compact inline First Flush Diverter diverts the first flush of rainwater containing contaminants from the roof to stormwater – no additional chamber required (Smart Sense® technology)
- The Clean Rain® Body swivels for convenient outlet positioning, fits standard garden, 22mm grey water and 38mm pool hoses, and 90mm pipe
- Easily accessible on/off switch, with a safety overflow to stormwater drain

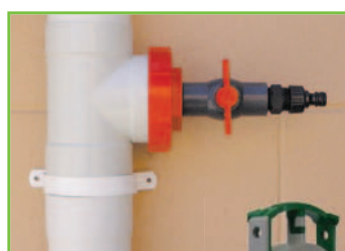
Description	Code
Clean Rain Ultra	
Multi-Fit (90mm and 100mm, 100x75mm and 100x50mm)	DDCR01



## The Practical Choice for All in One Rainwater Harvesting

- The new patented Rain Head single screen technology deflects leaves and debris away from the flow of water (Clean Shield™), allowing greater flow rates and maximising collection of rainwater
- The compact inline First Flush Diverter diverts the first flush of rainwater which contains contaminants from the roof to stormwater – no additional chamber required (Smart Sense® technology)
- The Clean Rain® Body swivels for convenient outlet positioning, fits standard garden, 22mm grey water and 38mm pool hoses, and 90mm pipe
- Easily accessible on/off switch
- Built in safety overflow to stormwater

Description	Code
Clean Rain Advanced	
Multi-Fit (90mm and 100mm, 100x75mm and 100x50mm)	DDCR02



## Fire Plug®

Innovative fire safety devices which allow roof gutters to be filled with water when bushfires threaten. Fire Plugs come in kit form and are easily fitted to PVC downpipes, which withstand exceptionally high heat and flame when filled with water. **They can also be used throughout the year to redirect rainwater to the swimming pool, pond or garden.**

## Sliding Gate Valves

Versatile in its application, it fits into downpipes and allows them to be shut off.

- Ideal for rainwater harvesting
- Suitable for low pressure applications
- Can be used as a wet system drain valve
- Can be used as a fire safety device.

## Greywater Diverter

Distribute the water you save from showers, hand basins and laundries straight out onto your garden.

- 50mm three way pipe diverter that fits most common greywater discharge pipes.
- 90mm three way pipe diverter connects to standard 90mm storm water pipe.
- Simple installation - change to left or right hand installation

## Easy Tee

Save time and money

- Easy Fit onto 90mm pipe
- Ideal for quick and secure T junction cut ins
- Requires a 86mm holesaw

Description	Code
Fire Plug®	
90mm	GSFP02
421 Sliding Gate Valve	
90mm	HW0900
421 Greywater Diverters	
90mm	HW0001
50mm	HW0002



HW0001



HW0900



HW0910

# Tank Essentials

## brass outlets™



NEW PRODUCT

### Brass Outlets

Rain Harvesting range of Brass Outlet's are manufactured using high quality DR brass. They feature a male (external) BSP thread and female (internal) BSP thread for easy attachment of fittings.

- WaterMark Certification – C of C 40138 – AS3688-2005
- Male (external BSP thread) and Female (internal BSP thread)
- 6mm silicone gasket
- Left hand threaded locknut for tight fitment
- Manufactured from CW602N DR Brass

Compliance – Australian Standard AS/NZS 4020:2005  
(Testing of products for use in contact with drinking water)

Description	Code
<b>Brass Outlets</b>	
25mm (1") Brass Outlet - 1" x 3/4"	RHB001
32mm (1 1/4") Brass Outlet - 1 1/4" x 1"	RHB002
40mm (1 1/2") Brass Outlet - 1 1/2" x 1 1/4"	RHB003
50mm (2") Brass Outlet - 2" x 1 1/2"	RHB004



## mozzie stoppa™



### Insect Proof Screens & Flap Valves

Mozzie Stoppa™ Screens and Hi-Flow Flap Valves can be fitted to the end of all pipes that lead to the tank and all tank overflow outlets. They keep pests and mozzies out of the tank whilst allowing the tank water to breathe.

### Mozzie Stoppa™ Screens

Incorporate a 0.955mm aperture stainless steel screen moulded into a 90mm or 100mm male and female PVC fitting and provide a versatile solution to insect proof the tank.



Description	Code
<b>Mozzie Stoppa™ Screens</b>	
90mm M&F	TATO05
100mm M&F	TATO17

Compliance – Australian Standard AS/NZS 4020:2005  
(Testing of products for use in contact with drinking water)

## mozzie stoppa™



EASY-CLEAN

### Maintenance Friendly Mozzie Stoppa™ Screen

Incorporates a spring hinged 0.955mm aperture stainless steel screen moulded into a 90mm male and female PVC fitting. Mozzie Stoppa™ Easy-Clean keeps mosquitoes, insects and vermin out of the tank. Easy to clean – release the latch, clean the screen and secure back in place.



Description	Code
<b>Mozzie Stoppa™ Easy-Clean</b>	
90mm M&F	TATO27

## flap valves™



### Mozzie Stoppa™ Hi-Flow Flap Valves

Have a double seal, are self-cleaning, and have flaps that cannot be over-rotated and left open. Vented Flap Valves allow a flow of air over the surface of the water which improves water quality and prevents a vacuum forming when large quantities of water are quickly drawn from the tank.



Compliance – Australian Standard AS/NZS 4020:2005  
(Testing of products for use in contact with drinking water)

Description	Code
<b>Mozzie Stoppa™ Hi-Flow Flap Valves</b>	
50mm Vented – Plastic Flap Screen	TAFV01
90mm Vented – Stainless Steel Flap Screen	TAFV02
100mm Plain – Plastic Flap	TAFV03
100mm Vented – Stainless Steel Flap Screen	TAFV04

## tank guardian™

PRIMARY SCREEN

### Tank Guardian Tank Screen

Unless rainwater enters the tank through pipes that are connected directly to the top or side of the tank, you must ensure all water passes through a tank screen at tank entry point. The tank screen must include a non-corrosive screen of not more than 1mm to keep mosquitoes and pests out.

- Mosquito proof 316 stainless steel mesh with 0.955 aperture
- UV stabilised material



Description	Code
<b>Tank Guardian Primary Screen</b>	
200mm	TASS20
300mm	TASS06
400mm Regular Suits min 363mm inlet hole	TATS01
400mm Large Suits min 377mm inlet hole	TASS07
500mm	TASS11





# Tank Essentials



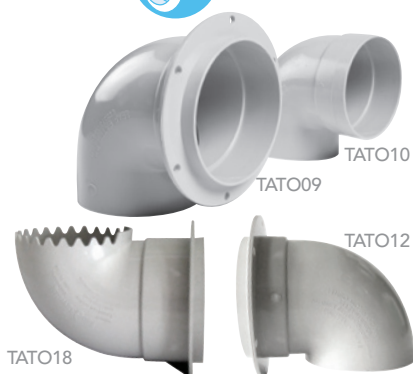
## Backflow prevention for your rainwater tank overflow

Install the Air Gap on the rainwater tank overflow outlet pipe to create an air gap to prevent stormwater backflow into the rainwater tank.

- Removable mosquito screens for easy maintenance
- Provides a visual inspection point
- HB230 requirement
- Fits 90mm stormwater pipes
- Easy to install



Description	Code
Air Gap	
90mm	TAAG01



## 90° Bend Hi-Level Tank Overflow Outlets

High Level Flanged Tank Overflow Outlets are ideal for poly tanks and will add another 120mm of water to the tank before overflowing.

90° Bend High Level Flanged Tank Overflow Outlet 100mm's 'ripple geometry' comb allows the speed of the overflowing rainwater to be maximised. The comb circumference 'breaks' the water surface and generates higher outflow. Ideal for higher rainfall events.

Compliance – Australian Standard AS/NZS 4020:2005  
(Testing of products for use in contact with drinking water)

Description	Code
90° Bend Tank Overflow Outlets	
FLANGED 90mm M&F Extra Hi-Level Tank Overflow Outlet	TATO09
PLAIN 90mm M&F Adaptor/Tank Overflow Outlet	TATO10
SHORT 90mm Tank Overflow	TATO12
FLANGED 100mm High Level Tank Overflow Outlet	TATO18



## Tank Overflow Outlets

Complete range of lead free PVC tank outlets available for flat wall and corrugated tanks.

Tank Overflow Outlets can be fitted with Mozzie Stoppa™ Hi-Flow Flap Valves 50mm or 90mm to insect proof the tank. 100mm Tank Overflow Outlet connection to Mozzie Stoppa™ Flap Valve 100mm – A small length of pipe will be required to connect both female fittings.

Tank Overflow Outlets can be fitted with Mozzie Stoppa™ Screen 90mm or 100mm to insect proof the tank.

Compliance – Australian Standard AS/NZS 4020:2005  
(Testing of products for use in contact with drinking water)

Description	Code
Flat Wall & Corrugated Tank Overflow Outlets	
90mm M Corro	TATO33
90mm F Flat Wall	GSGO03
100mm F Flanged	TATO22
100mm M Corro	TATO34



## Tank Overflow Kits

Tank Overflow outlets are available in kits.

### Hi-Level Tank Overflow Outlet Kit 90mm includes

- Tank Overflow 90mm Short
- 90mm M&F Mozzie Stoppa™ Screen
- 90mm Gasket
- Screws

### Hi-Level Tank Overflow Outlet Kit 100mm includes

- Flanged 100mm High Level Tank Overflow Outlet
- 100mm M&F Mozzie Stoppa™ Screen
- 100mm Gasket
- Screws

### Plain Tank Overflow Outlet Kit 100mm includes

- 100mm Flanged Tank Outlet
- 100mm Gasket
- 100mm M&F Mozzie Stoppa™ Screen
- Screws

### Hi-Level Tank Overflow Kit 90mm includes

- Tank Overflow 90mm Short
- 90mm Mozzie Stoppa Easy-Clean
- 90mm Gasket
- Screws

Description	Code
Tank Overflow Kits	
Hi-Level Tank Overflow Outlet Kit 90mm	TATO11
Hi-Level Tank Overflow Outlet Kit 100mm	TATO23
Plain Tank Overflow Outlet Kit 100mm	TATO24
Hi-Level Tank Overflow Kit with Mozzie Stoppa Easy-Clean 90mm	TATO31

# Tank Accessories

## Rain Harvesting™ wireless tank gauge



### Monitoring your rainwater tank from inside your home

Take the guesswork out of monitoring tank levels with a wireless tank gauge from Rain Harvesting. Convenient, reliable, easy to install.

- Wireless signal transmits up to 100 metres so you can place the receiver where it suits you
- Measures tank level using a solid float system
- More reliable than ultrasonic technology
- Suitable for all vented tanks up to 3 metres tall (includes underground tanks)
- Easy to read displays



Description	Code
Wireless Tank Gauge	
Tank Level Monitor	TAWG01



## tank gauge™ WATER LEVEL INDICATOR



### Monitoring your rainwater made easy

The Rain Harvesting Tank Gauge is a rainwater tank level indicator which ensures you are able to tell how much water is in your tank at a glance.

- Quick and easy to install
- Seals directly to the tank
- Utilises a reliable float system
- Easy to read dial with 'Empty' and 'Full' Indicators
- No batteries or wiring required
- Low maintenance requirements
- Suitable for all vented tanks up to 2.5 metres (100 inches) in height

Description	Code
Tank Gauge	
Tank Level Monitor	TATG02



## tank guardian™ EASY-CLEAN



### Tank maintenance made easy

Tank Guardian Easy-Clean protects tank screens from the build up of leaves and debris. Tank Guardian is simply placed on top of an existing tank screen and then easily removed to clean the tank inlet area.

- Easy to use – just lift the Tank Guardian off the tank screen by the easy grip handle and remove debris
- Easy to install – no tools required, simply place on top of the existing tank screen
- 0.955mm aperture stainless steel filter screen
- Keeping the tank screen clean helps to:
  - reduce rainwater contamination caused by debris decomposing in the screen
  - prevent blocked screens which reduce the amount of rainwater collected

Description	Code
Tank Guardian Easy-Clean	
300mm	TMTG01
400mm	TMTG02



# Tank Accessories



## Vent Cowls

When fitted to the top of toilet vent pipes, they reduce the possibility of pan syphoning where two toilets are connected to the one line. Can also be fitted to the top of rainwater tanks to help vent them properly.

## Vent Cowls - Weatherproof

Weatherproof vent cowl with stainless steel 0.955mm mosquito proof and a twist off top cover. The cover will also prevent the entry of rainwater entering the drainage system. Flange design allows fitment to the top of rainwater tanks to help vent them properly.

Compliance – Australian Standard AS/NZS 4020:2005  
(Testing of products for use in contact with drinking water)

Description	Code
<b>Vent Cowls</b>	
50mm	TAVC03
100mm	TAVC01
<b>Vent Cowls - Weatherproof</b>	
50mm	TAVC10
100mm	TAVC11



## Auto Tank Vacuum System

Vacuums the sediment off the bottom of the tank in the area of the out-take pipe every time the tank overflows. The systems are supplied in kit form and fit all types of tanks including metal, plastic, concrete and fibreglass.

Compliance – Australian Standard AS/NZS 4020:2005  
(Testing of products for use in contact with drinking water)

Description	Code
<b>Auto Tank Vacuum Systems</b>	
90mm Corrugated	TAVK01
90mm Concrete	TAVK02
90mm Flat Wall	TAVK03



## Safety Hatch™

Prevents bacteria and harmful pollutants from the top of the tank finding their way into the water storage system. They are a 'one size fits all' solution made from galvanised steel that:

- Fit OVER the existing tank access entry
- Are double hinged for security and are child proof and lockable
- Mosquito and vermin proof

Description	Code
<b>Safety Hatch™</b>	
730mm x 730mm All Steel Shallow Lid	TASH01
730mm x 730mm All Steel Deep Lid	TASH02



## Rain Filter Systems

The first water filters designed specifically for use with rainwater tank systems.

**Triple Action Filtration System** range provides filtration of fine sediments (down to 15 micron), colour and odour in the one cartridge. Ideal for rainwater tanks supplying water for toilets and laundry use.

**Sediment Filtration System** provides filtration of fine sediments (down to 80 micron) and is recommended for rainwater tanks that supply water purely for outside use.

- Easy installation
- Installed after the pump to provide extra confidence in your water quality
- Heavy duty filter housings with UV resistant components and rust-proof fittings

Description	Code
<b>Rain Filter Systems</b>	
Rain Filters Triple Action Filtration System 10"	WFRW01
10" Replacement Filters	WFRW03
Rain Filters Triple Action Filtration System 20"	WFRW02
20" Replacement Filters	WFRW04
Rain Filters Sediment Filtration System 5"	WFRW05
5" Sediment Filtration Replacement Filter	WFRW06



# Filter Pits & Gutter Outlets



## Filter Pit

In some instances it is not practical to fit rain heads. Filter Pits enable screening to be done at a pit which can be safer and easier to clean. Extremely beneficial when used in conjunction with underground tanks or where pipes junction at a central point before tanks that are placed downhill from the building. Fitting a First Flush Diverter between the Filter Pit and the tank will further improve water quality.

- Convenient location for cleaning
- Compact and easy to maintain
- Includes a stainless steel mosquito proof screen (0.955 aperture) and lid
- Optional junk basket for larger debris removal which incorporates a 6mm aperture stainless steel screen
- Optional height extension are available to increase height of the top of the filter pit to ground level

Description	Code
<b>Filter Pits</b>	
560mm	TAFP01
Junk Baskets for 560mm	TAFP02
Riser Extension for 560mm	TAFP03
700mm	TAFP04
Junk Baskets for 700mm	TAFP05
Riser Extension for 700mm	TAFP06



## Gutter Outlets

Gutter outlets when fitted in the conventional way (from top side of gutter) are a major cause of debris build up and gutter rust. A 'ridge' of approx. 3-4mm is created, obstructing water flow out of the gutter, which leads to a potential breeding ground for mosquitoes. The Rain Harvesting range fits from the UNDERSIDE of the gutter with no obstruction, so debris and fine particles wash out. Outlets for round and rectangular downpipes and half-round gutters are available.

- Easy to install
- Improve water flow
- Reduce gutter maintenance
- Increase life of gutter
- Made with Lead Free PVC

Description	Code
<b>Round Gutter Outlets</b>	
75mm	GSGO01
90mm F	GSGO03
90mm M	GSGO04
100mm M	GSGO09



Description	Code
<b>Rectangular Gutter Outlets</b>	
100mm x 50mm	GSGO07
100mm x 75mm	GSGO08



## Half-Round Gutter Outlets

An easy fit gutter outlet for half-round gutters. Available in 90mm and/or 100mm, both fit internally into PVC and round metal downpipes.

Description	Code
<b>Half-Round Gutter Outlets</b>	
90mm	GSGO05
100mm	GSGO06

Compliance – Australian Standard AS/NZS 4020:2005  
(Testing of products for use in contact with drinking water)

